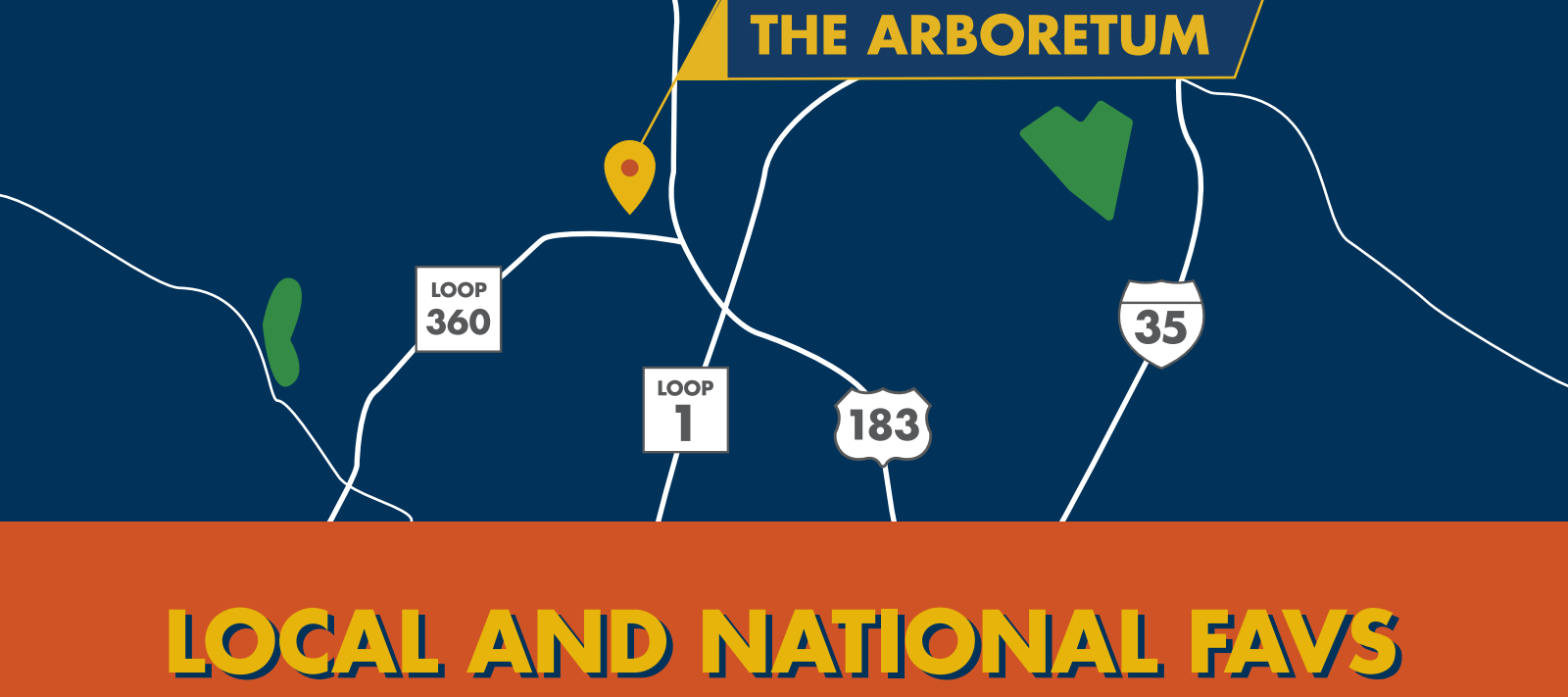


AUSTIN NEIGHBORHOOD SPOTLIGHT: THE ARBORETUM

The Arboretum is a suburban neighborhood in northwest Austin, located just minutes from the CBD, where US-183, Mopac and Loop 360 all converge. It is the heavily wooded, park-like atmosphere that gives the area its name. The Arboretum is not only a consumer's hub — with dozens of local and national restaurants and retail stores — but it is also home to many large office buildings, making it an ideal neighborhood to live, work and play.



LOCAL AND NATIONAL FAVS

With multiple farm-to-table restaurants and a plethora of fine dining options, The Arboretum features an abundance of restaurant choices from local favorites to national powerhouses.



P.F. CHANG'S



MODERN market



Eddie V's

PRIME SEAFOOD



TRULUCK'S

SEAFOOD • STEAK • CRAB HOUSE

ZOËS KITCHEN

FIREBOWL CAFE

Honorable Mentions: Newk's Eatery, The Cheesecake Factory, Manuel's, Five Guys, Corner Bakery Cafe, Blue Baker, Brio Tuscan Grille, Estância Churrascaria

NOTABLE ARBORETUM OFFICE PROPERTIES

Many Class A office buildings call The Arboretum home. AQUILA leases three of these projects, including 9500 Arboretum, Braker Pointe I & II and The Campus at Arboretum.

THE CAMPUS AT ARBORETUM 1-5



316,875 SF

9500 ARBORETUM



182,331 SF

BRAKER POINTE I & II



180,568 SF

GREAT HILLS PLAZA



139,252 SF

STONEBRIDGE PLAZA I & II



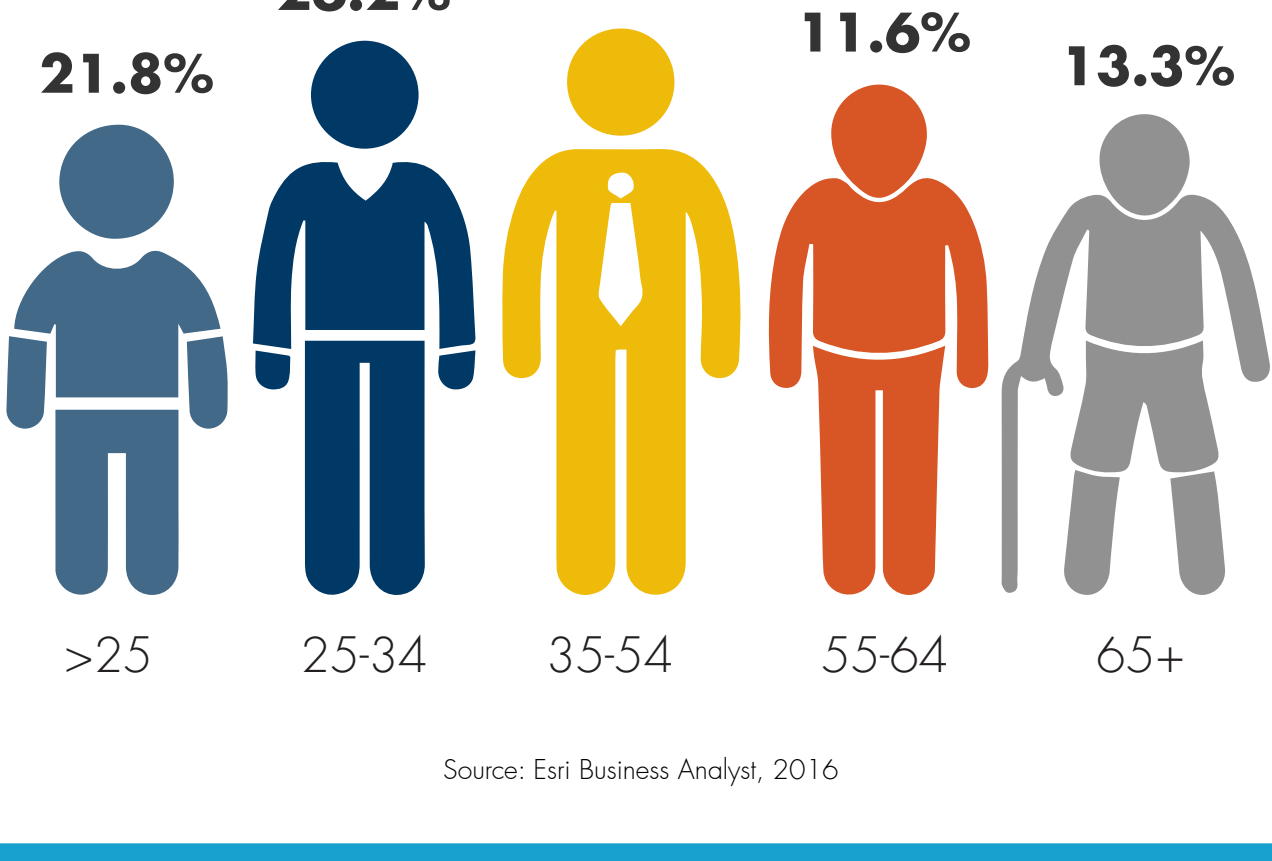
386,064 SF

ARBORETUM PLAZA I & II



245,175 SF

POPULATION BY AGE



Source: Esri Business Analyst, 2016

AUSTIN SHOPPING HUB

The heart of all things retail in Austin, The Arboretum features major big-box and specialty retailers, small shops and premier clothing brands.



- Nordstrom Rack
- Old Navy
- Gap
- Francesca's
- Soma
- Jos. A. Bank
- Everything But Water
- TJ Maxx

- Williams-Sonoma
- Crate & Barrel
- The Container Store
- Z Gallerie
- Pottery Barn
- Homegoods
- Target
- REI
- Tervis
- Pier 1
- Sephora
- Orvis
- Michael's
- Best Buy
- World Market
- Bed Bath & Beyond
- Petco



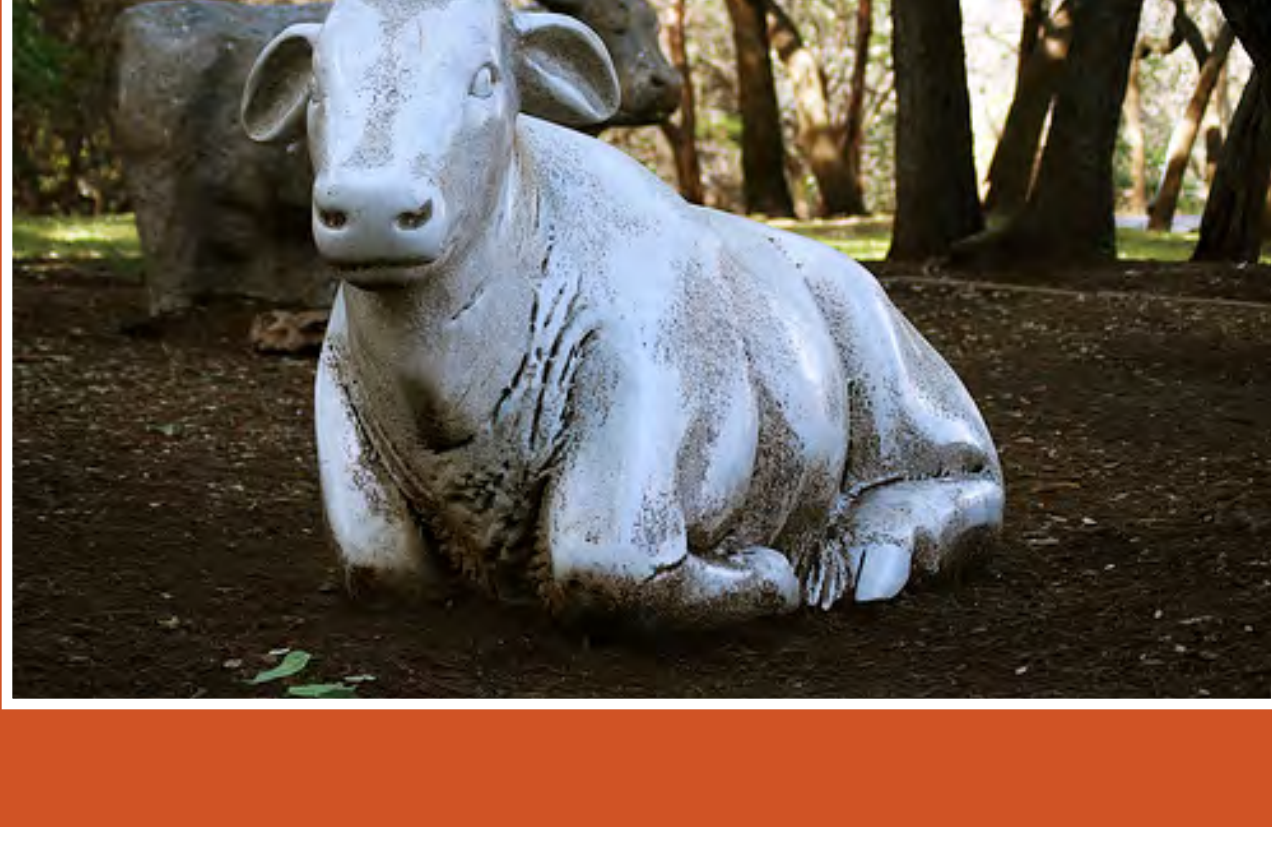
- Trader Joe's
- Whole Foods
- Sprout's
- Costco
- Sam's Club

DID YOU KNOW?

There is a courtyard with five **life-size marble cows**, sculpted by artist Harold Clayton. Each cow is made up of **four tons** of marble.

The courtyard of cows is a popular Arboretum spot, where kids of all ages can climb on the backs of these colossal statues.

They are located behind Amy's Ice Cream.



Bustling with activity amidst retail, restaurants and offices, The Arboretum is a spot where commercial real estate thrives.



aquilacommercial.com