



The
Insurance
Institute

Mid-semester assessments

PDI-06 | PDI-07 | PDI-08

A guide for students



Your Future, Insured.

CONTENTS

1. Overview	1
2. Before the assessment	2
3. Taking the assessment	4
4. Results	6
5. Key dates	7
6. Contact us	8

1. OVERVIEW

In response to your feedback, we've introduced online mid-semester assessments for some of our Professional Diploma in Insurance (CIP) modules, giving you the chance to earn up to 10% of your final mark before setting foot in the exam hall.

Mid-semester assessments are available for the following modules:

- **PDI-o6:** Practice of Risk Control and Underwriting
- **PDI-o7:** Practice of Claims and Loss Adjusting
- **PDI-o8:** Practice of General Insurance Broking – *new module for 2017.*



How it works

The online MCQ assessment is available to complete during a two week window. You can take your assessment at any stage during this window.

Technical support is available from 8am–6pm, Monday to Friday throughout the assessment window.

Call **086 876 2819**.

- Answer 20 multiple choice questions.
- You will have 30 minutes to complete the assessment.
- Once you start, you must complete the assessment. You cannot exit and come back to it at a later stage.
- You will be able to attempt the assessment once only.
- You will be examined on the first three chapters of your textbook.
- In your end-of-semester exam, you will be examined on all chapters of your textbook, but the questions that appear in your mid-semester assessment will not be re-tested.
- There is no negative marking in the mid-semester assessment: you receive 1 mark for a correct answer and 0 for an incorrect answer.

2. BEFORE THE ASSESSMENT

The assessment is an excellent way to build up marks before the final exam. Preparation and practice are key in helping you succeed.



Cover the material

The assessment tests your knowledge on the first three chapters of your textbook. Here are some steps you can take to prepare:

- Read these chapters and take notes
- Study the key points
- Watch the webinars
- Have a look at the syllabus, which sets out the knowledge points you need to cover in each chapter.



Check your systems

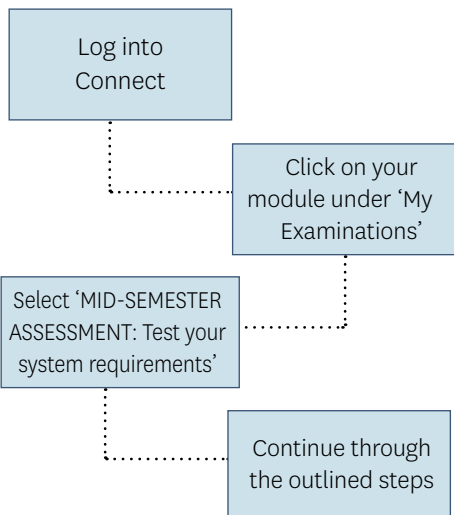
Since you will complete your assessment online, it is important to check your equipment and software before clicking 'begin assessment'.

- Take your assessment on a desktop or laptop computer. Mobile is not supported.

- Ensure you have a secure and reliable internet connection.
- We recommend you complete the assessment using Google Chrome.

We have created a systems requirement test, available through Connect, which you can complete to ensure everything is in order before you take your assessment.

To access the test:



If you encounter any difficulty throughout the systems requirements test, please ensure you are using the correct browser and device as outlined in this document.

If you are testing a work computer, ask your IT department to ensure there are no technical issues that may prevent you from completing the assessment.

If you have any further questions, don't hesitate to contact us on **01 645 6670** or memberservices@iii.ie.



Take the mock assessment

Once you've studied the first three chapters and tested your system requirements, you can answer 20 mock questions to make sure you're ready for the assessment. You can find this with the rest of your study supports in Connect.

This mock assessment will allow you to get a feel for the type of questions you can expect and how long you have to answer.

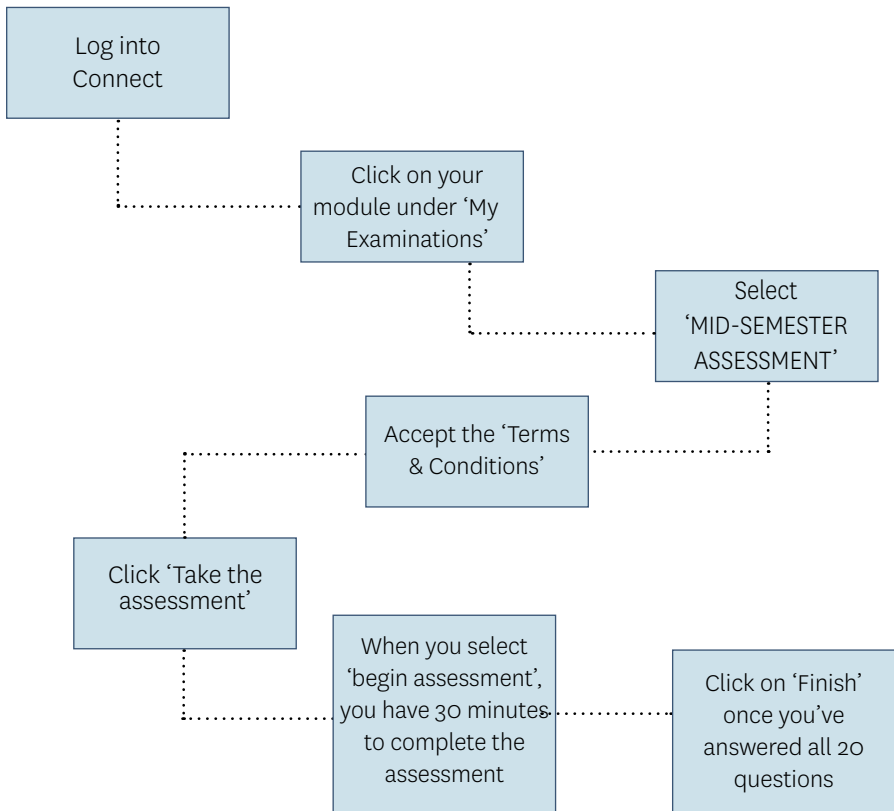
To get the best out of your mock assessment, we recommend you follow these steps.

- Try to create a quiet environment, which will replicate the one you will use to take the real assessment, using the same computer.
- Remember you only have 30 minutes, so stick to this timing.

3. TAKING THE ASSESSMENT

Make sure to give yourself the time and space to do your best in the assessment. Remove any distractions and come prepared – just like you would in any other exam environment.

Accessing the assessment





Find a quiet place

You can take the assessment at any stage throughout the two week window. If you choose to take it during work hours, make sure that you will not be disturbed.

Also let your IT department know that you will be taking the assessment in case there are any technical issues you should be aware of. Remember, always take the system requirements test on the same computer as the one you will be using for the mid-term assessment.

Never take the assessment on an unreliable wifi connection, such as on public transport.



Keep an eye on timing

30 minutes can pass quickly, so don't spend too long on any one question.

Once you've answered all 20 questions, you must click 'Finish' to complete the assessment.

4. RESULTS

Your mid-semester assessment is worth up to 10% of your final mark.

Your results will be available through Connect on **Wednesday 9 August**.

Accessing your result

Your result will be available in Connect, in the same area where you completed your mid-semester assessment.

On 9 August, follow the steps on page 4 of this guide.

- Log in to Connect and select your module under 'My Examinations'
- Select 'MID-SEMESTER ASSESSMENT'
- Click on 'Completed' beside the Mid-Semester Assessment option (under 'Terms and Conditions')
- Here you will see the overall percentage you achieved in the assessment.
- Click 'Feedback' for more information.

The table opposite lets you know the percentage you've achieved towards your final grade based on how many questions you answered correctly.

Result as shown in iiiConnect	No. of questions answered correctly	Contribution towards final mark
0%	0	0%
5%	1	0.5%
10%	2	1%
15%	3	1.5%
20%	4	2%
25%	5	2.5%
30%	6	3%
35%	7	3.5%
40%	8	4%
45%	9	4.5%
50%	10	5%
55%	11	5.5%
60%	12	6%
65%	13	6.5%
70%	14	7%
75%	15	7.5%
80%	16	8%
85%	17	8.5%
90%	18	9%
95%	19	9.5%
100%	20	10%

5. KEY DATES

Here are some key dates to keep in mind throughout the semester; when the mid-semester assessment is available, final exam dates and results.

Mid-semester assessment

For the September 2017 exam sitting, you will be able to complete your mid-semester assessment between the following dates:

- Opens: **Friday 21 July @ 9am**
- Closes: **Friday 4 August @ 12 noon**

You can take the assessment at any point between these dates. Technical support will be available from 8am–6pm, Monday to Friday. Call **086 876 2819**.

If you do not take the assessment between these dates, you will forfeit the 10% available and your final exam will be marked out of 90%.

Final exam

Dates for the September 2017 final exam sittings are:

- **9 September:** PDI-o6 and PDI-o8
- **16 September:** PDI-o7

Find further details at iii.ie/exams.

Results

- Mid-semester assessment: **9 August**
- Provisional results for the module are available on **13 October**

6. CONTACT US

If you have any questions about the mid-semester assessment or any other aspects of your module, don't hesitate to get in touch.

Member Services

Our Member Services team is here to help. Call us on **01 645 6670** or email memberservices@iii.ie