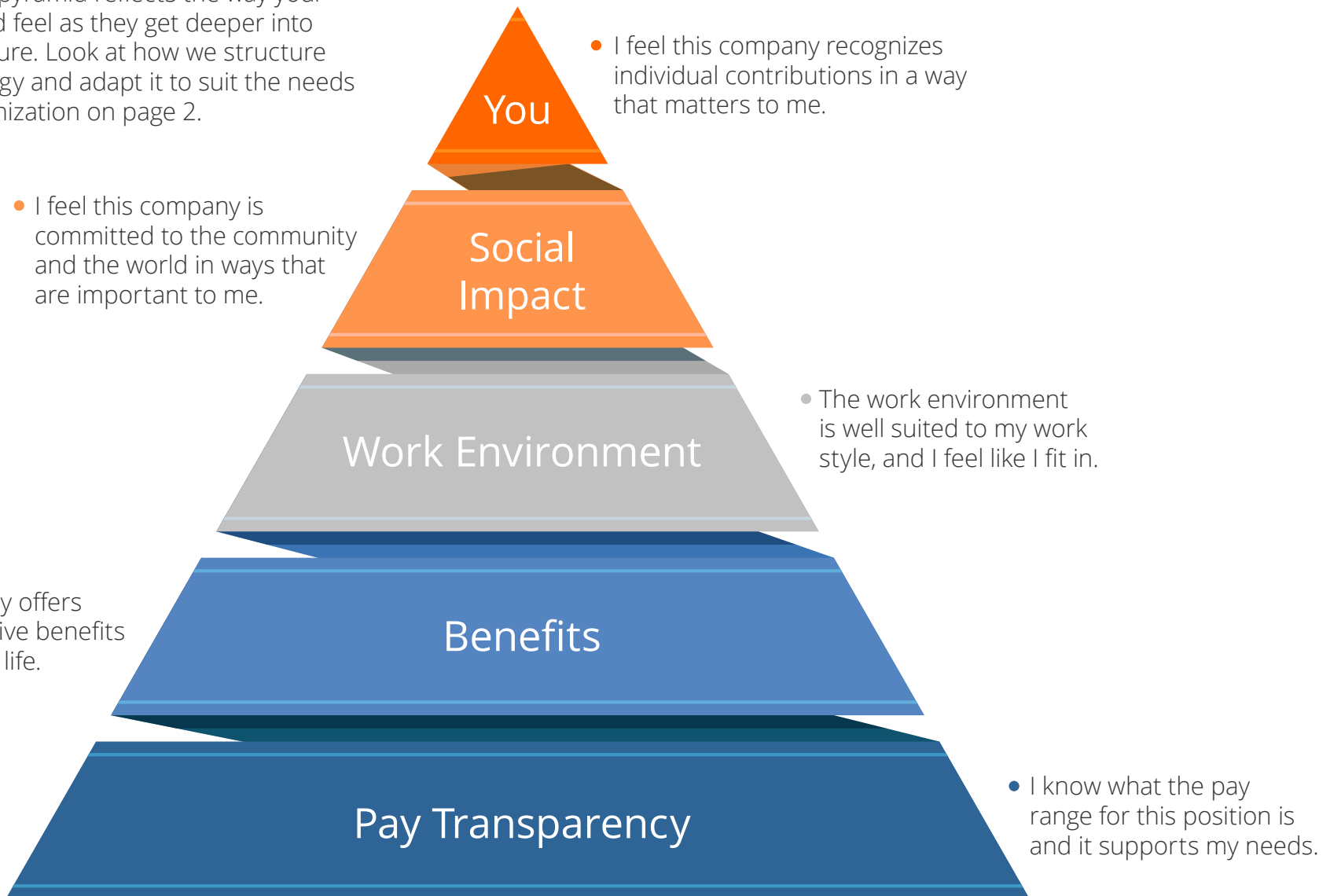


# Company Culture

**Directions:** Your pyramid reflects the way your employees should feel as they get deeper into the company culture. Look at how we structure our culture strategy and adapt it to suit the needs of your own organization on page 2.



## Fill-in-the-Blank

**Directions:** Your pyramid reflects the way your employees should feel as they get deeper into the company culture. Look at how we structure our culture strategy on page 1 and adapt it to suit the needs of your own organization.

