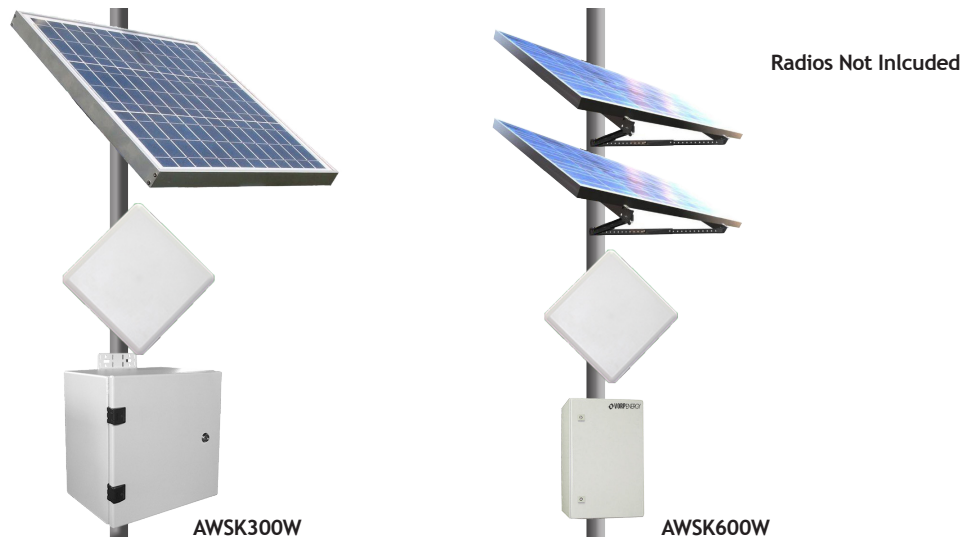


Remote Solar Power Kits



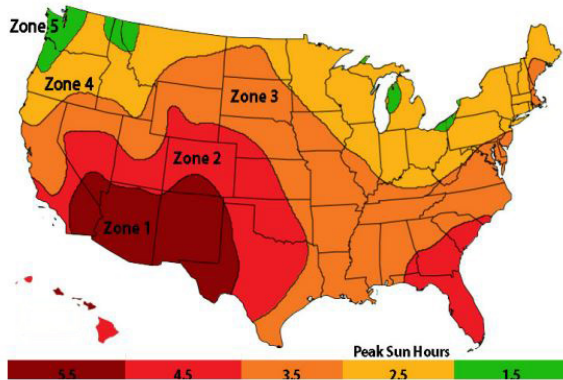
These Remote Power Kits are designed for applications where power is needed but no power is available. The high quality solar panels have a 20-25 year power output guarantee. The solar panels come with a specific pole mount (sized according to the panel) that can be mounted to a 2" to 6" diameter pole depending on the model. The Powder Coated Aluminum NEMA 4X-IP65 rated, (30" x 24" x 14"), lockable enclosure has space inside for (2) 260Ah batteries, the cables & controls, and still up to (4" x 21" x 9") extra space for your electronic equipment. Kit includes a 4" or 6" pole mount.

Electronic equipment inside enclosures includes a DIN rail with breakers, terminal blocks (for easy termination of cables & power/output accessories), cables, and an Advanced or MPPT charge controller to protect against over-charging or over-discharging of the batteries. Batteries are not included with these kits but they can be purchased locally, just make sure you use Sealed Lead Acid (SLA), Absorbent Glass Matt (AGM) batteries.

Features

- Turnkey Power Solution - Simply mount to your pole and connect your battery
- 24 Hours of Continuous Power with up to 7 Days of stored backup power
- Weatherproof & UV resistant, Powder Coated Aluminum & Steel Enclosures
- Remote Power Series
- Continuous Power for your Equipment
- Engineered to be Pole or Wall Mounted (Mounts Included)
- Advanced Charge Controls protects against over-charge/discharge

Peak Sun Hours



NOTE: This map below shows your average peak sun hours for the year. Your shortest sun hours days occur during December & January. If you will only need to run your equipment from late spring to early fall you could jump ahead up to 2 Zones to calculate your output.

Example: If you are in Zone 3 and you only need power from May - September then use the Zone 1 Watt chart below.

Technical specifications

	300W-24	600W-24
Zone 1 - Max Continuous Power (W)	45	90
Zone 2 - Max Continuous Power (W)	35	70
Zone 3 - Max Continuous Power (W)	27	54
Zone 4 - Max Continuous Power (W)	18	36
Zone 5 - Max Continuous Power (W)	10	20
Solar Panel Power (W)	2 x 150+	4 x 150+
Solar Panel Size	300+ Watt	600+ Watt
Solar Pole Mount	Side of Pole Mount	
Recommended Pole Size	6"	
Voltage Output	24 VDC/10 Amps	
Battery Capacity (batteries not included)	270Ah	
Battery Voltage (batteries not included)	12V to 24V	
Charge Controller	MPPT	
Enclosure Size (Internal)	23"x17"x15"	
Enclosure Size (External)	24"x18"x15"	
Enclosure/Mount Weight (no batteries)	28 lbs.	
Operating Temperature	-40°C to +60°C (-40°F to +140°F) Batteries can lose up to 50% of power in below -0°F Temp.	

Ordering Information

AWSK300W	AWSK600W
Remote Solar Power Kit	Remote Solar Power Kit
Includes:	Includes:
<ul style="list-style-type: none"> Solar Panel with Pole Mount Nema 4X enclosure with Pole Mount PWM or MPPT Charge Controller 24-48 DC to DC Converter 5 Port Gigabit POE Switch (4 ports POE, 1 Uplink) Terminal Blocks DIN Rail Cabling (batteries not included)	<ul style="list-style-type: none"> Solar Panel with Pole Mount Nema 4X enclosure with Pole Mount PWM or MPPT Charge Controller 24-48 DC to DC Converter 5 Port Gigabit POE Switch (4 ports POE, 1 Uplink) Terminal Blocks DIN Rail Cabling (batteries not included)

Battery Recommendation: Qty 2 batteries, either UB121350 or LPS12-160

©AvaLAN Wireless Systems Incorporated. All rights reserved. AvaLAN Wireless and the AvaLAN Wireless logo are registered trademarks of AvaLAN Wireless Systems Incorporated. All other trademarks are property of their respective owners. AvaLAN Wireless makes no representations or warranties with respect to the accuracy, utility, or completeness of the contents of this publication and reserves the right to make changes to specifications and product descriptions at any time without notice. No license, express or implied, by estoppel or otherwise, to any patents or other intellectual property rights is granted by this document. Particular uses or applications may invalidate some of the specifications and/or product descriptions contained herein. The customer is urged to perform its own engineering review before deciding on a particular application. AvaLAN Wireless products are not designed for use in medical, life saving, or life sustaining applications.

03.27.2015