

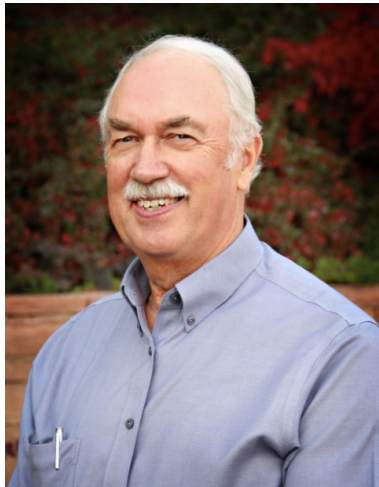
## TELECYTOLOGY WITH SONOPATH

SonoPath has spent years working on the quality control of telecytology. We've developed a telecytology package that includes a **submission protocol**, **instructional video** and **technical support** to ensure the best protocol is followed by you or your technicians to make sure that what's on your slide is reflected in the digital submission provided, and interpreted by our top-notch and hand-picked pathologists.

**No more mailing slides!** With our innovative work-flow and design to optimize quality, you can transmit your data from anywhere in the world within minutes.

We offer a **24-hour turnaround time Monday-Friday on reads**; often **same day** if sent in the morning.

See our **microscope** and **microscope adapter** recommendations from leading pathologist, **Dr. Larry McGill** below.



### ABOUT DR. LARRY MCGILL

Dr. McGill recently retired from *Animal Reference Pathology Laboratory*. He received his DVM from *Oklahoma State University* and his PhD in veterinary pathology from *Texas A&M University*.

A diplomate of the American College of Veterinary Pathologists and former President of the *Utah Veterinary Medical Association*, Dr. McGill has also been an active committee member in the *American Veterinary Medical Association* and the *American College of Veterinary Pathologists*.

A monthly contributor to *Advances in Small Animal Medicine and Surgery*, Dr. McGill has a keen interest in **veterinary cytology**, **anatomic pathology**, **clinical pathology**, and **endocrinology** and has lectured extensively on *feline injection site sarcomas*.

### MICROSCOPE ADAPTERS Recommendations from Dr. McGill

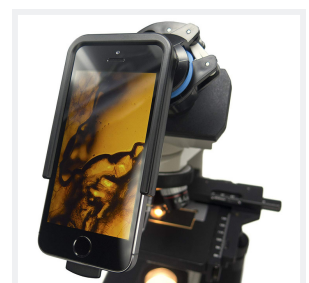
With any adapter, the **key is familiarity with the adapter**. Once you are familiar with a specific adapter, it is actually not that hard to use any of them -- if you only use it once a month, it will likely be a source of frustration unless you are an extremely patient individual!

#### Adapter Recommendation: **Magnifi**

- Although more pricey, the Magnifi is absolutely the best and most stable adapter we have seen. It is the most user-friendly and easiest to use out of the ones we have tried.
- Other Recommendations: Carson Optical HookUpz, Snapzoom, Vite Metal, Skylight

#### Microscope Recommendation: **LW Scientific i4 Infinity 4 Objective Microscope**

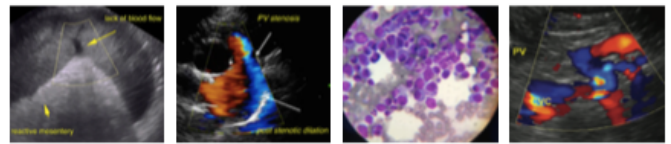
- All our SonoPath staff use every day for their telecytology interrogations.
- Choose the planar optics package for flatter field and better image quality.
- Retail around \$1500, depending on the distributor.



Magnifi



LW Scientific - i4 Infinity

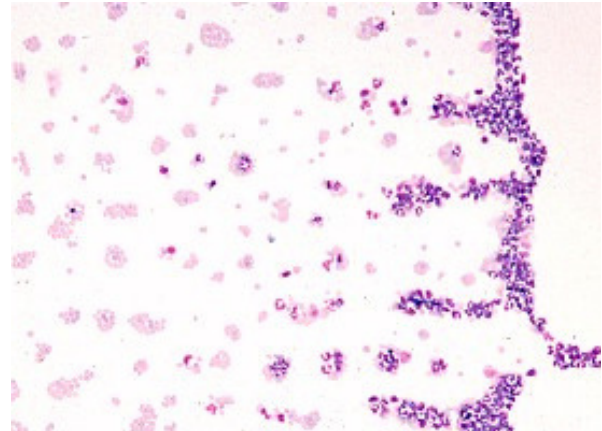


# TELECYTOLOGY SUBMISSION PROTOCOL

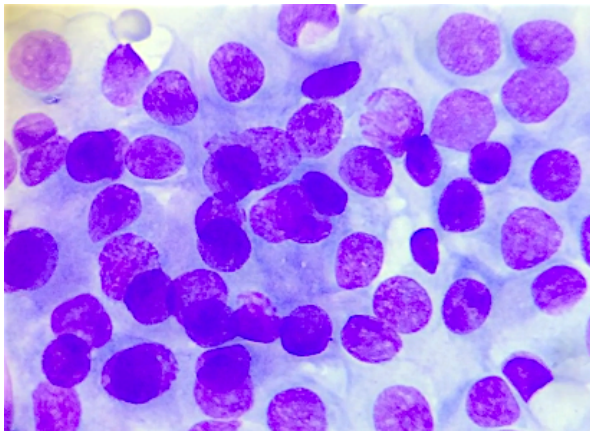
## PART ONE

### The Plan

- The key to good cytology videos, is to find nucleated cells in the slide first, then clumps of nucleated cells if possible and scan those regions
- After staining, scan your slides first on 10x then 40x to find the best populations of nucleated cells. Essentially you are creating a “plan” so you know where you need to scan once you move to higher magnifications
- Once you know where you want to start your scanning video, move up to 100x



*Precursory Scan = A Plan*



*Large Cell Population = Quality*

## PART THREE

### The Transfer

- Transfer your videos to your desktop. Either use a direct cable to transfer, or use the photosync if you have a Mac and iPhone. (There are other transfer methods using a PC app and Android, please reference your users manual)
- Label EVERY video. For example, Fido spleen 1, Fido spleen 2, Fido liver 1, Fido liver
- Visit [spa.sonopath.com](http://spa.sonopath.com) and drag and drop the videos files into the uploader
- If you are submitting more than one cytology site, please use the drop down boxes to indicate all site locations

## PART TWO

### The Scan

- Make 3-6 videos of 30-60 seconds each on 100x, fairly slow and smooth, stopping for a few seconds when you get to a nice cluster of cells you judge to be relevant. This is the best speed and pattern for the pathologist during his evaluation
- Follow the traditional method of scanning slide so you do not repeat any areas
- The number of videos really depends on the quality of your cell populations - lots of cells require less video
- Rarely are stills needed; an exception would be very very sparse cell groupings on a slide (No 40X videos needed)

Your Home for Educational Telemedicine™

Ultrasound RAD CT MRI Teleoncology | Telecytology | Internal Medicine Consults

**Create Case Upload**

Interpretation Type\*

Cytology

Cytology Type\*

Ultrasound Guided

Cytology Ultrasound Guided

None -

Lung

Liver

Lymph Node

Cystic/Fluid

Pancreas

Kidney

Spleen

Other

\* ROUTINE turn around times begin when the case information and all images are received. STAT turn around times begin when the full case is received and specialist approval is obtained.

Request Type\*

Select a value -

Referring Veterinarian\*

Species\*

*Submission to SonoPath = Success*