

AXXAIR Orbital facing



Tube facing is used on thin tubes with a thickness of less than 3 mm. It consists in bringing into conformity the end of a tube or an accessory.

This conformity acts on three aspects:

the perpendicularity of the face of the tube -
the surface state of the face - potentially a length adjustment.

After the facing process, the face will be perpendicular to the axis of the tube, without burrs, with a low RA and the desired length.

Facing machines are used when the cutting process is not sufficiently precise for the application or when the cutting process generates burrs.

To give an exemple: abrasive cutting disc, band saw or tube cutter.

FLEXIBILITY, PRODUCTIVITY

Our facing machines operate on battery or corded for more flexibility TIALN blades, reversible with two cutting edges guarantee optimal lifetime of consumables.

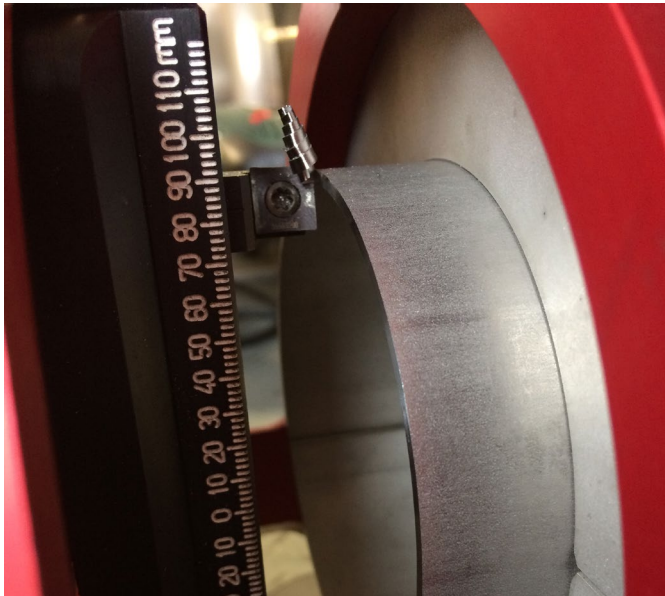
QUALITY

Facing creates a clean and burr-free surface without tube deformation: sharpness and accuracy guaranteed.

Thin tube are therefore ready for welding.

PORTABILITY

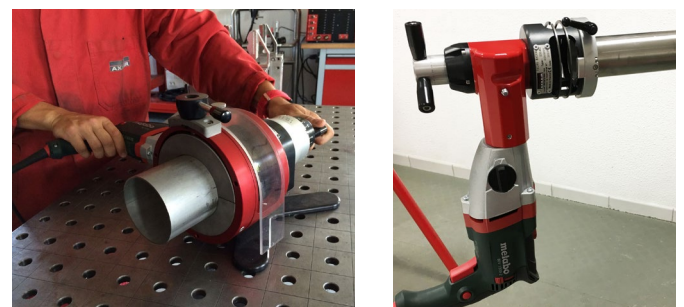
Our facing machines are lightweight and designed to be used on site as well as in the workshop.



Tube with small diameters <25.4 mm are particularly concerned by the facing process. They are often cut with tube cutters or abrasive cutting machines. Generally speaking, tube must be faced before welding in order to obtain quality welds.

One category of tube is particularly concerned: electro-polished tube used in semiconductor or pharmaceutical industries.

It is forbidden to scratch the polished surface inside the tubes: the cuts are therefore only done with a cutting wheel. This process does not generate chips but only dust. The result of this cut is not exploitable without a facing operation which unrolls the chip towards the outside of the tube.



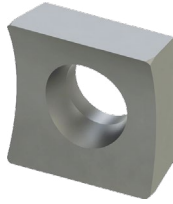
Please do not hesitate to contact us for all enquiries relating to orbital facing technology.

We will be glad to share our know-how with you and find an adapted solution to your needs!

DC25 MA - DC65 MA

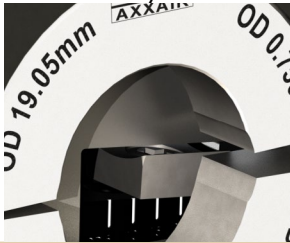
High quality blades

HSS TIALN blade
Reversible,
two cutting edges



Clamping shells

Stainless steel
molded jaws



Easy adjustment

Indexable wrist and
wide opening with
spring



Brushless motor 18V

- 2 mechanical speeds + electric speed variator
- Special handy design
- Work without return shock
- Integrated work lamp
- Comes with two 5.2 AH battery, LiHD technology, maximum autonomy

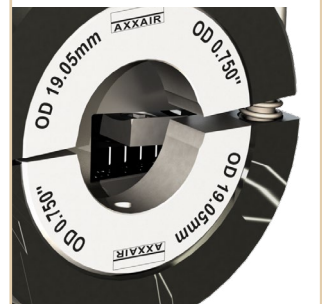
Accurate manual advance

Graduated vernier
scale



Easy set up of the tube

Large opening and
pivot clamping



Delivered in an anti-shock case

Water- and dustproof



Facing range

DC25-MA	ø3 - ø25.4 mm 0.1 - 1"
DC65-MA	ø3 - ø63.5 mm 0.1 - 2.5"

DC25 MA - DC65 MA

Technical characteristics:

Thickness < 3 mm (0,12") according to material

Burr-free tube squaring and edge breaking machine used after a band saw cut or on electro-polished tubes. Ideal tool to face a band saw cut before automatic welding

18 V Drill / Driver motor:

- 220-240 V ~ 50 / 60Hz or 100-120V ~ 60Hz
- High rotation torque
- Rugged reduction housing which allows heat dissipation and optimal durability
- Come with two 18V Li-Power, 5.2 Ah batteries and a fast battery charger
- 2 mechanical speeds + electric speed variator :

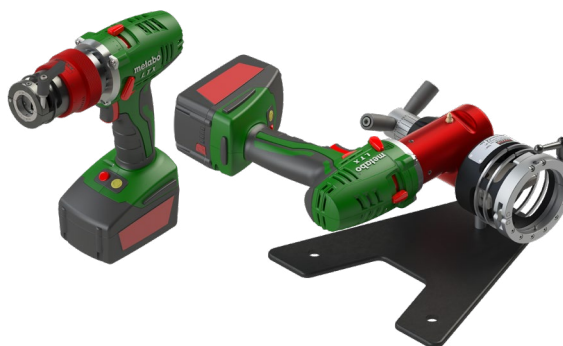
Speed 1 : 0-500 tr/min (rpm)

Speed 2 : 0-1700 tr/min (rpm)

All motors are supplied in their own individual cases, including the necessary tools

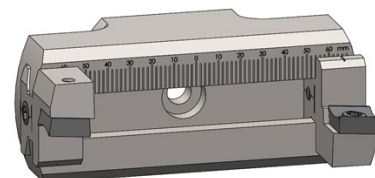
DC25

There are two mounting positions for the blade to cover the range of diameter.



DC65

Adjustment of the tool support by sliding: allows easy adjustment according to diameter and optimization of tool wear.



- 30° and 45° outside bevel possible with optional tool holder
- Facing and bevelling in one operation
- Possibility to use two tools simultaneously

DC65 : Flexible use



	Product Code	Facing machine for the following diameters (mm)	Net weight	Minimal straight length of tube	Dimensions (HxLxI in mm)
120 V Drill / Driver	DC25-MA1	Ø3 - Ø25.4 0.1 - 1"	2.5 kg	With standard jaws : 9mm (0.354") With micro-fit jaws : 5mm (0,196")	285 x 220 x 75
	DC65-MA1	Ø3 - Ø63.5 0.1 - 2.5"	5.5 kg	With standard jaws : 10mm (0,393")	140 x 325 x 250
230 V Drill / Driver	DC25-MA2	Ø3 - Ø25.4 0.1 - 1"	2.5 kg	With standard jaws : 9mm (0.354") With micro-fit jaws : 5mm (0,196")	285 x 220 x 75
	DC65-MA2	Ø3 - Ø63.5 0.1 - 2.5"	5.5 kg	With standard jaws : 10mm (0,393")	140 x 325 x 250