



Ø12 - Ø115 mm

Ø0,5 to Ø4,5 "

Big range: Ø12 to Ø115 mm through concentric clamping on the full diameter range

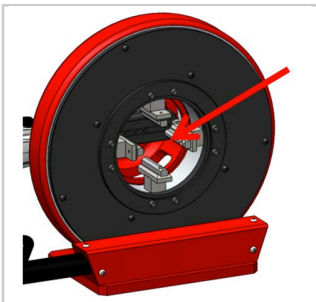
Burr-free tube squaring and bevelling machine

- thickness < 3mm (according to material)
- Ideal tool to face a band saw cut before automatic welding
- Accurate manual advance: 0.1 mm step graduation 4/1000 inches
- Sliding adjustment of tool holder offers easy diameter change and optimal tip wearing
- 30° and 45° outside bevel possible with optional tool holder.
- Squaring and bevelling in one operation.
- **Possibility to use two tools simultaneously.**
- Minimal straight length of the tube: 58 mm.
- Delivered in wooden box.

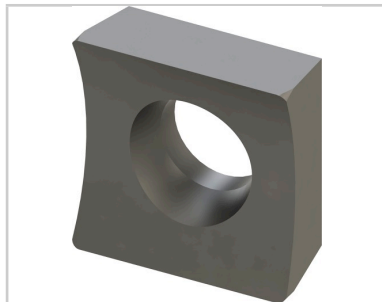
Weight: 37 kg / 82 lbs

Motor 1100W with large speed range (2 gear)

Worm and gear transmission for optimal speed range



4 concentric stainless steel jaws: straight length for clamping 58 mm



HSS TIALN HIGH QUALITY
Reversible blade (two cutting edges)



Bench mounting option: CCBSB-001

References	Accessories	Consumables
DC115-BM2 (230 V) DC115-BM1 (120 V)	Bench mounting option: CCBSB-001 CCSA21 : Pneumatic clamping for 121/171/221 and DC115-BM / DC221-BM	DC-OUT1: Box of 10 blades, TIALN HSS-E DC-UOUT1: Blade, TIALN HSS-E (single unit) DC-OUT2: Blade tightening screw Tool adjusted to the diameter of tube to be machined in just a few seconds

