



ø50 - ø220 mm

ø2 to ø8,5 "

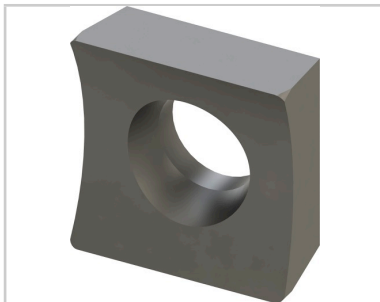
Burr-free tube squaring and edge breaking machine used after a band saw cut or on electropolished tubes

- Thickness < 0,12" (3 mm) according to material
- Wide range of use with concentric clamping for all diameters
- Ideal tool to face a tube before automatic welding
- Accurate manual advance: 4/1000" (0,1 mm) step graduation
- Sliding adjustment of tool holder offers easy diameter change and optimal tip wearing
- 30° and 45° outside bevel possible with optional tool holder
- Squaring and beveling in one operation
- **Possibility to use three tools simultaneously**
- Minimal straight length of the tube: 2,44" (62 mm)
- Delivered in high quality protection case

- **Weight: 121 lbs. (55 kg)**
- Motor 1100W with large speed range (2 gears)
- Screw and wheel drive to optimize the speed range and eliminate vibrations



6 Stainless steel concentric jaws
Minimal straight length of the tube: 4,22" (62 mm)



High quality HSS-E TIALN blade
Reversible blade, two cutting edges



Bench mounting option: CCBSB-001

References	Accessories	Consumables
DC221-BM2 (230 V) DC221-BM1 (120 V)	Bench mounting option: CCBSB-001 CCSA21 : Pneumatic clamping for 121/171/221 and DC115-BM / DC221-BM	DC-OUT1 : Box of 10 blades, TIALN HSS-E DC-UOUT1 : Blade, TIALN HSS-E (single unit) DC-OUT2 : Blade tightening screw Tool adjusted to the diameter of tube to be machined in just a few seconds

