



ø3 - ø63,5 mm

ø0,1 to ø2,5 "

Burr-free tube squaring and bevelling machine

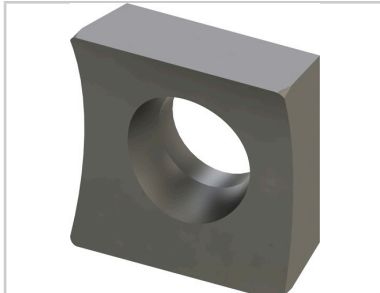
- Accurate manual advance (0.1 mm steps)
- Quick blade adjustment, no disassembly required
- Light and compact: 7.1 kg with battery
- Removable support foot
- 30° and 45° outside bevel possible with optional tool holder.
- squaring and bevelling in one operation
- Reduction housing in cast aluminium

Mains motor

- Motor 1100W.
- Two speed reducer with thumbwheel speed change.
- Top quality speed changer.
- Anti-start protection.



Jaws open wide for easy positioning of tube.



HSS TIALN HIGH QUALITY
Reversible blade (two cutting
edges)



Tool adjusted to the diameter of tube to be machined
in just a few seconds.

References	Accessories	Consumables
DC65-M1 (120 V) DC65-M2 (230V)	<p>DCM65A-XX: Jaws for diameters between 1 and 2,5 inches for the DC65.</p> <p>DCM65B-XX: Jaws for diameters between 0,1 and 1 inch. for the DC65.</p> <p>DCM6525: Spacer for fitting DC25 jaws on a DC65.</p> <p>DC65-P300: 30° bevel tool holder DC65-P450: 45° bevel tool holder</p>	<p>DC-OUT1: Box of 10 blades, TIALN HSS-E</p> <p>DC-UOUT1: Blade, TIALN HSS-E (single unit)</p> <p>DC-OUT2: Blade tightening screw Tool adjusted to the diameter of tube to be machined in just a few seconds</p>

