



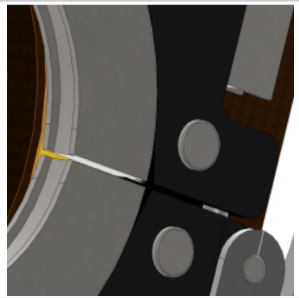
∅6 - ∅65 mm

∅0,25" - ∅2,5"

- Water cooled including outer body
- Stainless steel collets
- Spring mounted axis and spring closing lever: takes in account ovality of the tubes
- Tool free fixing of the collets through a push button: no risk to loose keys..
- Upper window available as an option.
- Dedicated to thin wall tubing up to 2,5 mm (3 mm in some cases)
- **Able to be used under 120A, 100% duty cycle**
- **Narrow head: 41 mm total, 20,5 mm from electrode to the outside**
- Safety Cable integrated in the hosing to avoid pulling on the inner cables

**Weight : 9,2 Kg / 20 lbs**

- DC Motor with Tachy
- All connectors directly compatible with AMI power sources
- Compatible with AMI Auto calibration feature



Toll-free jaw fitting



All machines are delivered in their individual case



Compatible with AMI power sources ( 205, 207 models )



Connectors compatible for AMI power sources

References	Accessories	Consumables
SATF-65MI	<p>SSED-16: offset tungsten electrode support ∅ 1.6 mm offset range 4 to 7.5 mm</p> <p>SSED-24: offset tungsten electrode support ∅ 2.4 mm offset range 4 to 7.5 mm</p> <p>SAFS-210 : Wire harness extension 10 M</p> <p>SMN65-XX Clamping jaws ∅ in mm</p> <p>SATF65ND-A001 Window for SATF-65ND and MI</p> <p>SAGC-121 : SATF-40 / SATF-65 / SATF-115 Handler</p>	<p>SCE16-XX : ∅ 1,6 mm</p> <p>SCE24-XX : ∅ 2,4 mm</p>

