

POLARIS® & spectra®

IMAGING | UTILITY ROOM | MERCHANDISE

DENTAL'S MOST CAPABLE
CAMERA COMBINATION.



AIR
TECHNIQUES equipped for life™

BETTER TOOLS. BETTER DENTISTRY.

- Sturdy lightweight design fits comfortably in the hand.
- 120° button ring makes it easy to freeze, unfreeze and capture images with one finger.
- Unsurpassed comfort.

NOW with a sleek new design and 120° button ring for added comfort!

- Unique capture-upon-release feature makes capturing steady, blur-proof images as easy as 1-2-3:

- 1. DEPRESS BUTTON TO ACTIVATE CAMERA**
- 2. AIM CAMERA**
- 3. RELEASE AND CAPTURE IMAGE**

- The quick connect USB umbilical makes it easy to transport the cameras from room-to-room, and fits in traditional delivery system handpiece holders.
- Compatible with Visix and most TWAIN compliant dental imaging software programs.
 - “Easy plug and play” intergrations.
- USB umbilicals are 10 feet in length.



Camera Holder

POLARIS® FEATURES:

The superior optics and broad focal range of Polaris deliver exceptional image quality to enhance your patient diagnosis and case presentation.

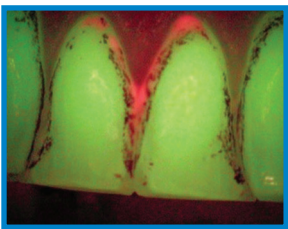
- Fixed Focus technology allows all objects from 6mm to 40mm to remain in sharp detail. There's no need to adjust anything.
- Low-glare LED light.
- Accessible to all areas of the oral cavity thanks to its small head design.

AIR TECHNIQUES IS THE LONGEST STANDING MANUFACTURER OF INTRAORAL CAMERAS IN THE DENTAL INDUSTRY.



spectra® FEATURES:

The **only** caries detection aid that works like Doppler radar to discover caries earlier, as well as plaque and calculus.

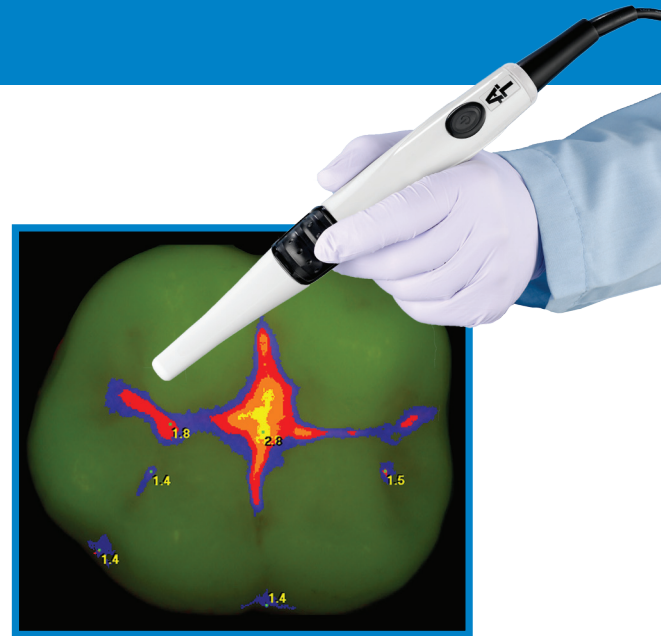


Plaque before treatment/cleaning



Results after treatment/cleaning

- Uses fluorescence to detect caries in fissures and smooth surfaces that may go unnoticed in X-ray images.
- In active mode carious regions appear red, while healthy enamel appears green.
- After capturing the image within your existing imaging software, the extent of the decay will be interpolated and indicated in two ways-and **only** Spectra can do this:
 1. The color will be either blue, red, orange or yellow
 2. A numerical indicator between 0 and 5 will be shown.
- Can be used during the restorative phase to verify that all caries have been removed.
- Detects decay hidden between the margins of existing composite and amalgam restorations.

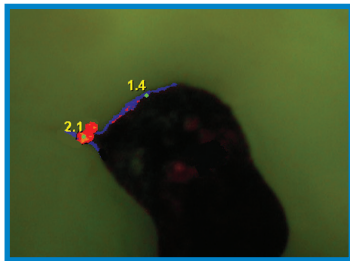


ENHANCE CASE MANAGEMENT AND INCREASE CASE ACCEPTANCE:

- Makes it much easier to persuade patients to approve needed treatment, even when there's no pain or discomfort.
- Early detection means pinpointing problems at an earlier stage, which traditionally go undetected. This leads to more conservation and less excavation.
 - Polaris captures a clear image of the tooth and lets the patient see what you see.
 - Spectra's Doppler radar-like images provide both color and numerical indicators to make the patient appreciate the severity of the problem.
- Helps you explain how treatment now can avoid future procedures that might be painful, expensive and more invasive.



Caries not obvious under white light.



Existence & extent of caries obvious with Spectra.

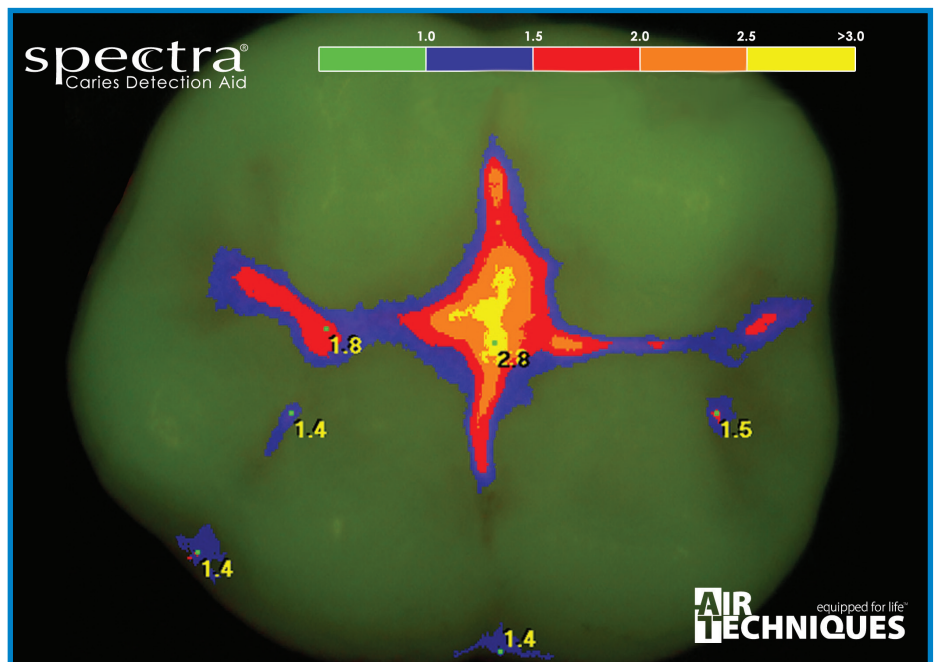


Caries not obvious under white light.



Existence & extent of caries obvious with Spectra.

Spectra's color and numerical coded chart provides a visual reference to aid in your diagnosis and treatment plan.



Polaris and Spectra guide you through the caries removal process from pre- to post-procedure, ensuring that all carious dentin has been removed.



POLARIS SPECIFICATIONS

Part Number:	G5000
Dimensions (LxD):	8.8" x 1.1" (Handpiece)
Video Outputs:	High Speed USB 2.0 Video
Weight:	2.9 oz
Resolution:	640 x 480 Pixels
Illumination:	Ultra-Bright White LED Lamps
Image:	Normal, Not Mirrored
Package Includes:	Polaris Handpiece, 50 Camera Sheaths, 1 USB Umbilical, and 1 Chair Side Handpiece Holder
Warranty:	36 Months



Part Number: G4600 Intraoral Combo (Polaris Package and Spectra Package Included)

SPECTRA SPECIFICATIONS

Part Number:	G4000
Dimensions (LxD):	8.8" x 1.1"
Video Outputs:	High Speed USB 2.0 Video
Weight:	2.9 oz
Package Includes:	Spectra Handpiece, 50 Camera Sheaths, 10 Positioning Spacers, 1 USB Umbilical, and 1 Chair Side Handpiece Holder
Warranty:	36 Months



PLEASE VISIT AIRTECHNIQUES.COM
FOR POLARIS AND SPECTRA COMPUTER REQUIREMENTS



For over 50 years, **Air Techniques** has been a leading innovator and manufacturer of dental products. Our priority is ensuring complete satisfaction by manufacturing reliable products and providing excellent customer and technical support. Whether the need is merchandise, digital imaging or utility room equipment, Air Techniques can provide the solution via our network of authorized professional dealers. Proudly designed, tested and manufactured in the United States, our products are helping dental professionals take their practices to the next level.

Air Techniques' products are distributed through authorized dealers only.

Corporate Headquarters

1295 Walt Whitman Road | Melville, NY 11747-3070 | Phone 800.247.8324 | Fax 888.247.8481

Western Facility

291 Bonnie Lane, Suite 101 | Corona, CA 92880-2804 | Phone 800.247.8324 | Fax 951.898.7646

www.airtechniques.com



Scan QR Code to learn more about Polaris.



PN 9922-175 Rev C

