



2 - 5
Welcome



6 - 12
Treatment
Centres



13 - 15
Lights,
X-Rays
& Plant



16 - 19
Handpieces



20 - 21
Imaging



22 - 23
Infection
Control



24 - 28
Benchtop
Devices



29 - 34
Comparison
Charts /
Showrooms



educated
people
honest advice

understand our customers' needs

**relevant
products**

*helping dental
professionals
provide the best
possible care*

WELCOME - HOW WE HELP YOU

Let's put you at the centre of our commitment.

“At Gunz Dental, we make a promise to our customers - we promise educated people who understand our customers' needs, supplying relevant products and honest advice to help dental professionals provide the best possible care.”

What does this mean?

We really take the time to understand your equipment requirements.

Our suppliers understand our equipment philosophy.

Our people are trained and prepared to bring you the very best advice and support.

Why do we partner with select equipment companies?

We have partnered with our suppliers over many years to source, provide and support a full range of equipment for your dental practice.

Our philosophy is to select and supply product that meets the needs of our customers and that represents the best value for money at that price point.

We choose partners not only for the very best in technology, quality and support they bring, we also choose them as they share the same vision as we do for helping dental professionals provide the best possible care. Our partners stand beside Gunz Dental and support us to support their products in Australia and New Zealand.

We stand by our partners and products, and have done so for nearly 80 years.

What is different about Gunz Dental? Whilst we are indeed a full service provider, we don't take the position that every dentist is the same; we focus on relevance to you – we don't focus on fitting you around a product. We offer warranty, in some cases over and above what the manufacturer offers and we have a team of trained people and a network of service partners who are able to install and maintain your equipment so that you can keep working.





Trevor Martin, Managing Director Gunz Dental

Why Gunz Dental?

Gunz Dental was founded in 1936 when Rudi Gunz, a German national who had been working in the dental industry in the UK emigrated to Australia. The company remained in the Gunz family for more than 70 years before it was sold to the families of the then and current Managing Director and Financial Director Trevor Martin and Peter O'Leary in 2007. Gunz Dental is the largest Australian-owned importer and distributor of dental products in Australia and New Zealand. We can supply everything a Dentist needs to provide the best possible dental care including Equipment, Instruments, Laboratory products, Medicaments, Materials and Consumables and we think we are a viable alternative to Henry Schein. We like to think Customers of Gunz Dental are inspired to buy from us because we understand their business needs and provide honest advice to help them to provide the best possible care to their patients.

Today Gunz Dental offers a great variety, (35,000 product lines from more than 120 international and local suppliers), of quality products in our endeavours to help our customers provide the best possible dental care. We employ a team of highly trained dental industry specialists who have the knowledge to move products from manufacturer to chairside and who are intent on giving relevant information and honest advice so that customers can make informed purchasing decisions.

We have proudly been supplying dental products in Australia and New Zealand for more than 75 years and we are very appreciative of our customers who continue to educate us so that we are able to source products that meet their needs and for this we are truly grateful. We are pleased to bring you our equipment catalogue in which we hope you will find the solution to your needs.



WELCOME - BELMONT “Reliability – Think Ahead”

The Belmont Story

Established in 1921, Belmont is a third-generation Japanese family business manufacturing health and beauty furniture who have tenaciously pursued the application of great design to manufacturing products that are of the highest quality and finest craftsmanship, that make a continued positive contribution to our future good health.

Today **Belmont** is one of the largest manufacturers of dental chairs and treatment centres in the world and has a worldwide network of offices, subsidiaries and distributors studying the operating methods of doctors and nurses, as well as what it is that causes tension and unease in patients, making sense of industry and market trends and developing and introducing innovative new designs and technologies that make it easier for patients, doctors, and nurses to communicate so that everyone contributes to the healthcare process and that increase work efficiency and productivity.

At the heart of Belmont's design philosophy are products that reflect the paramount importance of infection control, that are highly functional, easy to use and that patients find comfortable. The results are elegant solutions with a performance and longevity that exceed expectations. Belmont products are renowned, the world over as durable and reliable products, that are engineered and manufactured with care and backed by world-class product support. Belmont intelligence becomes the intelligent choice.

“At the heart of Belmont’s design philosophy are products that reflect the paramount importance of infection control, that are highly functional, easy to use and that patients find comfortable.”

World Class Manufacturing System



Cell Production System
– Most of the assembly works are completed by one person with required parts pre-delivered to each “cell” thus achieving efficiency and excellent quality control.



Flexible Manufacturing System – Unique system incorporating machine centre, jig and strong racks of finished parts ensures efficiency for the 24 hour unmanned operation.



Automated Pick-up System – Synchronised with product schedule, fully computerised stock control system enables efficient pickup and delivery of component parts to “cell” production line.



WELCOME - BELMONT “Reliability – Think Ahead”

Ergonomically Designed for Patient Comfort

Over 70 years ago Belmont turned a dream into a reality. The goal was to develop a ‘low-pressure electro hydraulic device’, the same (but smaller) which had been used predominately for industrial purposes in factory equipment, machine tools and in aircraft manufacture.

Belmont's goal? To lessen the pressure felt during a dental procedure by patient, doctors and assistants; to eliminate noise, vibration and shock that may make some patients feel anxious.

Belmont's low pressure electro-hydraulic technology is much quieter and smoother than gear and worm-driven dental chairs. The result? Patients feel more comfortable and a great deal less stressed, both psychological and physically, during an examination and treatment.

Why Hydraulics?

- **High power**

Hydraulic devices generate greater power that takes little effort to use compared to electric motors

- **Quiet and Smooth**

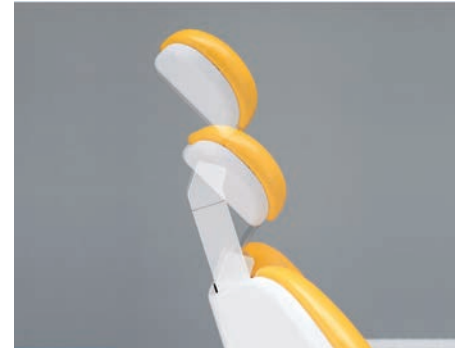
The inertia of hydraulic device is so small that there is no impact due to sudden start, stop and reverse movements

- **Long Life**

The lubricity and no rust of oil make hydraulic device reliable - regular maintenance is eliminated



[Click for Takara Belmont Timeline](#)



Axis Headrest

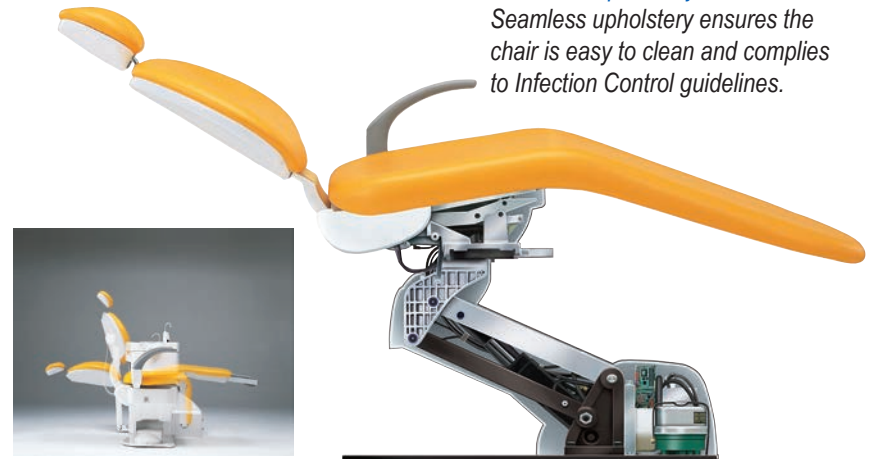
Designed based on an ergonomic analysis of the head and its movements. The headrest can be adjusted to give the doctor a clear line of sight into the cavity at any position

Axis Backrest

Ergonomically designed backrest mechanism keeps patient's head and back aligned when changing positions and entering and exiting the chair

Seamless Upholstery

Seamless upholstery ensures the chair is easy to clean and complies to Infection Control guidelines.



Shock-free Mechanism

Smooth, quiet and precise movements of the chair are achieved with the hydraulic system





“The Treatment Centre for every budget”



Clesta eIII

The combination of electro-hydraulic and air operation systems ensures a high standard of reliability and safety. Through perfect balance of an ergonomically designed chair and unit, Clesta eIII offers smart interfaces and operational ease.

- All-hydraulic system enables a wide range of lift heights (420mm up to 800mm). Ensures ease of entry and comfortable operating height
- Touchless sensor on/off LED dental light
- Double articulated headrest ensures a comfortable and correct head position for children and adults
- Large operational doctor's table ensures unparalleled ease of use and plenty of working area
- Flexible floor box to accommodate front/side plumbing





“Quality you can feel and technology you can rely on”



Clesta II

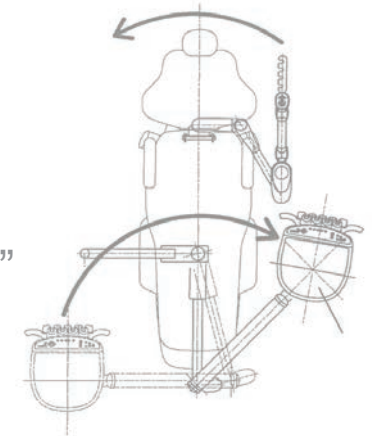
Belmont combines cutting edge technology that offers sophistication, performance, flexibility and above all reliability. The hydraulic devices in all Belmont chairs offer the advantages of quiet and smooth operation.

- Clean station, built in service box eliminates the use of external umbilical hoses
- Programmable chair positioning offers a wide range of practical working environments
- Assistant console includes 3-way syringe, vacuum and saliva ejector
- Touchless sensor on/off LED dental light
- Integrated cuspidor creates an attractive, aseptic environment for the patient and the smooth surface makes it easy to clean.





“The Left/Right Solution
for all oral health care professionals”



Quolis

It is estimated that 10% of the population is left handed. Studies have also shown that left handed dentists working from a left-sided dental treatment centre perform better when working from a right-handed dental chair (1). The Belmont Quolis is designed as a dental treatment centre which meets the needs of the entire professional team. Combining technology, style and functionality, the Quolis bridges the gap between what has been available and what your team wants. With superb design, the Quolis allows the team to focus on the patient with greater efficiency.

- Change from Left to Right operation with ease. Toe mount operation for speedy change over
- Double articulated headrest allows for easy positioning of the patient's head for excellent access to upper and lower arches
- Seat and backrest positioning are controlled by built-in touchpads that can be controlled from Operational table or from the Dental Assistant's side
- A separate floorbox allows for flexibility
- Flexible treatment center available with or without spittoon.



Dursan Kaya (2004). Performance of left-handed dental students is improved when working from the left side of the patient. International Journal of Industrial Ergonomics, volume 33, Issue 5r, pages 387-393

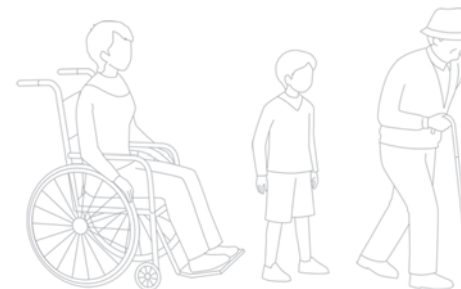


“A knee break chair makes communicating with your patient easy”

CP One Plus

Relaxing the patient is the first step towards providing efficient treatment. The CP One Plus allows for improved communication in any position. Patients are better able to communicate their needs in a level of comfort and clinicians are able to communicate their intentions in a non-threatening environment.

- All-electric treatment centre complete with LED dental light
- Folding legrest chair, the clinician can stand or sit directly in front of the patient for face-to-face communication
- Low initial height of 400mm, makes it easy to access for all patients, especially for children, elderly and those with limited mobility
- Wide range positioning means the operators table can be moved from the 6 to 2 o'clock positions
- Six (6) handpiece holders are adjustable horizontally and vertically which ensures the operator has his/her tools within easy reach.



“Customise your treatment and find the right solution for your practice”



Clair Chair

This knee break chair offers the feeling of space and openness to any surgery

- Designed for face-to-face communication between doctor and patient
- Joystick foot controls for easy hands free chair movement.
- 180° folding arm rests permitting easy access for children, elderly and wheel chair bound patients



Pro II Chair

This unique knee break design creates an ideal environment for consultation and communication between dentist and patient.

- Designed for face-to-face communication between doctor and patient
- Swing out arm rest ensures easy access for children, elderly and the less mobile to gain access
- 2 pre-set positions
- Base rotation of 110° (Left or Right)

“Customise your chair with a cart or a Belmont pedestal mount unit”

Belmont Chair medical grade upholstery colours



Colours illustrated are a guide only and may vary from the actual upholstery colour.

BEAVERSTATE SURGERY SYSTEMS

“Customise your treatment centre for what works best for your practice”

Flexible Modular Equipment

Beaverstate dental equipment offers clinicians the opportunity to custom design their own surgery concepts. Modules can be installed as single items or as a complete system.



Over The Patient System - Post Mount - S-3300



Cabinet Mounted System - Pneumatic Brake - Flex Arm - SD-3302



3HP Automatic Doctor's Cart S-4100 &
Automatic Doctor's Cart for 5200

[Click to see the extensive Beaverstate range or ask your Gunz Dental representative for a catalogue.](#)

OPERATING STOOLS

“Available in a wide variety of upholstery colours to match your Belmont chair”



Doctors Type C

The Doctor stool's backrest and seat sections can “float” to follow body movements, or can be locked into any desired position.



Nurses Type B

Nurse stools are designed with a foot rest base ring and a height adjustable back rest. The revolving abdomen support can be swivelled to the back and front for the most comfortable position.



Ergo Physio 1

The Ergo Physio 1 can be configured to include a foot ring or foot ring with left side ergonomic arm rest for assistant.



LED DENTAL LIGHT

“Pure Daylight – Heaven Sent”

Bel-Halo LED Dental Light

“See the light” when you upgrade from Halogen to LED. It will definitely lead to improvement in your everyday visibility.

- Cool White LED illumination
- Constant 5000°K daylight at any intensity
- Stepless 370 to 2970FTC intensity
- 510FTC No-Set Composite mode
- Aseptic touchless on/off
- Fluid 3-axis light head positioning



Why Bel-Halo LED?

Not all LEDs are the same

Bel-Halo LED lights provide cool white illumination of the oral cavity for correct tooth shade matching and for the differentiation of soft tissue structure.

Ideal colour rendering

Each LED bulb is tested for the ability to render colours closely to their appearance in natural daylight. Only bulbs that have very high colour rendering properties are selected for each Bel-Halo LED array.

Composite safe mode

Premature curing of composites is easily avoided by temporarily cutting undesired light wavelengths. Bel-Halo lights utilise a touchless switch for Composite Safe Mode activation.

Long Life

With LED bulb life expectancy of 40,000 hours, it is likely that bulb replacement will never be needed.

[Click for more info on Bel-Halo](#)



X-RAY SYSTEMS

“The right x-ray system for every budget”



Phot-X-II X-ray Unit

- Wall mount
- Compatible with most digital radiographic systems
- 0.7 x 0.7mm focal point
- 0.01 – 3.2 seconds exposure time



Dexco ADX 4000

Portable all-in-one compact cordless digital X-Ray camera for field, hospital and clinical use.

- LCD direct display design
- Wireless hand-held
- USB connection to PC to transfer image
- 128Mb memory storage inside
- Digital image enhancement on LCD display
- 300 X-Ray images covered by single battery charge
- Sophisticated equipment design
- Incredibly light weight only 2.5kg
- Suitable for use both with a sensor and conventional films



PLANT EQUIPMENT: COMPRESSORS & SUCTION UNITS

“Plant Room Solutions for every dental practice”



Cattani K200

Cattani compressors are renowned for their performance and reliability, a reputation earned over the last 20 years. Cattani have a large range of compressors, and several acoustic options. There is a compressor to suit the requirements of every dental practice!



Cattani Turbo Smart

Turbo Smart constantly monitors how your suction is being used and adjusts its performance to suit, giving you powerful aspiration with minimal fluctuations, even when colleagues in the rooms start or stop using the suction.

Model	K100	K200	K300	K400	K500	K900
No. of Surgeries	1	2-3	3-4	4-5	7-8	UP TO 12
L/min @ 5 bar pressure	67 N L/min	160 N L/min	320 N L/min	476 N L/min	714 N L/min	840 N L/min
Tank Capacity Liters	24	50	75	100	150	300
kW	0.55	1.25	1.5	2.5	3	4.5
Noise level db (A)	70 db (A)	71 db (A)	73.6 db (A)	73 db (A)	74 db (A)	75 db (A)

[Click for more info on Cattani Compressors](#)

Model	Turbo Smart A	Turbo Smart B
Number of operators	2	3 with 40mm main suction line 4 with 50mm main suction line
Rated current	7 AMP	9.8 AMP
Rated kW	1.45	1.87
Suction Control	Variable speed suction	Variable speed suction
Max RMP	4800	6200
Maxium negative pressure	-210 mbar	-210 mbar

Tandem options available for larger practices.

[Click for more info on Cattani Turbo Smart](#)



BIEN AIR MICROMOTORS

With over 50 years of experience in dentistry and surgery, Bien Air offers a range of solutions and products which are renowned worldwide for their excellence.

Bien Air has positioned itself as a world leader in electric micromotors.

Ergonomics, precision and reliability are at the core of the Bien Air Product development. Being situated in the Swiss Watch Valley allows Bien Air to work with like-minded Swiss partners leveraging in all the micro technology based expertise from local Universities, Electronic companies and of course the micro engineering schools.

Why Electric and what does it mean for you, your practice, and your patient?

Electric handpieces offer a significant increase in power compared to air-powered handpieces.

Electric motors offer up to 5 times more power and 20 times more torque than an air high-speed.

This power allows Oral Health Care Professionals to cut through enamel, porcelain, metals, and even zirconia without the need to “feather” during the cut. The speed will not decrease as the bur is applied to the tooth because the system compensates by automatically increasing torque.

Faster preparation times will reduce the procedure time, hence increase practice efficiency.

Bien Air electric Micromotors reduce noise level and vibration compared to a turbine, minimising patient anxiety and discomfort which allows the dentist to work more efficiently. Lower levels of vibration enhances cutting precision, ensuring smoother finishes and improved clinical outcomes.



Bien Air's MX2 micro series micromotor. Coupled with the Bien Air micro handpieces you will benefit from a unit that is 30% shorter and 23% lighter. Ideal for smaller hands

Adjustable light intensity from 0 – 38,000lux

Lifetime-lubricated ball bearings, your micromotor no longer needs lubrication after each use. This ensures it always has optimal amount of oil. Compatible with Type E connections.

MX2 Micromotor



MX2 LED Micro Series

Brushless motor
100-40,000 rpm
max. torque 3.5Ncm
weight 90gm
Ideal for Restorative, Prophylaxis and Endodontics procedures

MCX LED

Brushless motor
1000 – 40,000rpm
Max. torque 2.5Ncm
Weight 78gm
Ideal for restorative and prophylaxis procedures

Optima MX2

The Optima MX2 is particularly versatile. This control unit offers pre-programmed modes for all the main restorative and endodontic procedures.



BIEN AIR CONTRA-ANGLES

“Bien Air Handpieces – Ahead of the field”

Bien Air Contra-angles: marvels of precision, offering reliability and quiet operation. The latest developments in Bien Air contra-angles incorporates a shaft and gear system mounted on pre-stressed ball bearings. This offers vibration-free transmission and reduces energy loss.

Thanks to the unique performance of the combination of micro-motors and Bien Air control units, no more than two contra-angles are needed for the majority of dental restorations, prophy or endodontic procedures. The available speed range with the CA 1:1 and CA 1:5 is 60 to 200,000rpm. Reduce inventory and time, increase practice profitability.

Bien Air also have contra-angles available in Micro-Series, notable for their near perfect balance in the hand.



Contra-angle 1:5 L
(Micro-Series with LED)



Contra-angle 1:1 L
(Micro-Series with LED)



Contra-angle 1:5 L
(with LED)



Contra-angle 1:1 L
(with LED)



Straight PM 1:1
(Micro-Series)



BIEN AIR TURBINES

“Bien Air Handpieces – Ahead of the field”

The most advanced technology, the most refined ergonomics. Bien Air air turbines have always been known for their perfect balance ensuring the best clinical outcomes.

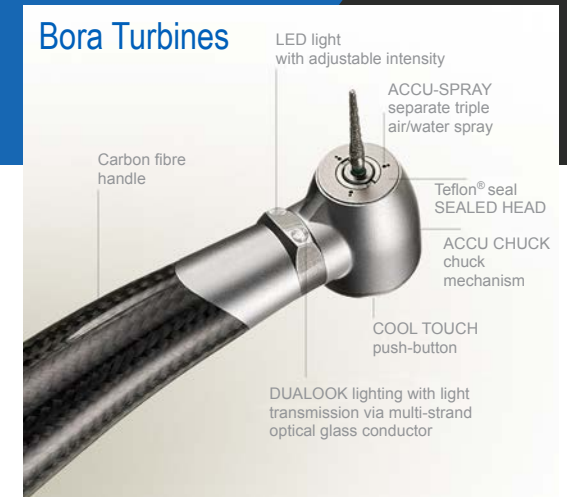
Bien Air manufactured the first reliable turbine in history in 1959. A succession of revolutionary innovations followed: the first push button, air bearing technology, the first rotating quick-connect coupling... amongst others. Today there is the Blackline carbon fibre turbine handpiece that is again ahead of the field in technological turbine advancements.

Prestige Turbines

The smaller head size of the Prestige turbine makes them ideal for use with children and the elderly. They are also ideal for the clinician with a smaller hand, being light weight and easy to handle.

[Click for Bien Air Handpiece Advantage on youtube](#)

[Click for Bien Air Micro-Series on youtube](#)



Bora L Blackline LED and Bora L LED
320,000rpm, 2.7 bar, 3 sprays, push button bur locking, anti-retraction valve, carbon fibre handle.
Available in Multiflex® KAVO® coupling.

Prestige L Blackline and Prestige L LED
315,000rpm, 2.7 bar, 3 sprays, push button bur locking, anti-retraction valve, carbon fibre handle.
Available in Multiflex® KAVO® coupling.



“Easy and Economical Maintenance”



Lubricare

Quick, simple and economic - this perfectly sums up the Lubricare maintenance device, when used with Bien-Air's Spraynet and Lubrifluid products, with each spray specifically designed for a phase in the maintenance cycle: Spraynet, for dissolving impurities and cleaning the instrument both inside and out, and Lubrifluid, for effective lubrication of instruments. Lubricare and Bien-Air maintenance sprays support the daily use of your handpieces, guaranteeing impeccable maintenance, optimal operation and an extended service life.

Lubricare Technical Data and Features

Capacity	Up to 4 instruments per cleaning cycle
Length of the cleaning cycle	25 seconds per cleaning cycle, per instrument. Choice of 2 cleaning/lubrication modes: Normal mode and intensive mode
Type of instrument	Turbines and Contra-Angles
Maintenance	Cleaning and lubrication
Consumption	5 times more economical than manual maintenance, Lubricare allows 400 maintenance cycles with 1 bottle of Spraynet and 1 bottle of Lubrifluid
Extraction system	An extraction system removes the oil vapours. A collector absorbs the excess lubricant, to ensure a cleaner working area and improved hygiene
Lubricant detector	A lubricant detector monitors the status of the system & detects low lubricant levels



INTRAORAL CAMERAS: PORTABLE

“Exceptional image quality and case acceptance have never been easier!”



Polaris

The superior optics and broad focal range of Polaris deliver exceptional image quality to enhance your patient diagnosis and case presentation. Polaris Intraoral Camera provides exceptional image quality that will aid in case acceptance.

- 120° button ring to make image capture easy
- Fixed focus keeps objects from 6 – 40mm in sharp detail, no need to make adjustments
- Unique capture-upon-release makes capturing image easier
- Rated the “Top Intraoral Camera” by Dental Advisor



[Click for Polaris on youtube](#)
[Click for Spectra on youtube](#)
[Click for Polaris & Spectra on youtube](#)



Spectra

Spectra is a non-invasive caries detection aid that helps eliminate the guesswork in detecting and diagnosing tooth decay and enhances case acceptance through better patient education.

- Spectra's Doppler radar-like images are easily understood, so you can clearly show your patients how early intervention helps them and how they can avoid future treatment that might be painful, expensive and more invasive.
- Spectra uses fluorescence to detect caries in fissures and smooth surfaces that may go unnoticed in X-ray images
- Carious regions appear red, while healthy enamel appears green
- Spectra guides you through the caries removal process from pre-to post-procedure, ensuring that all carious dentin has been removed



“Practical and cost-effective chairside intraoral imaging”



ScanX Duo

Oral Health Care Professionals are choosing PSP as their digital option due to its many advantages over film, including: faster image development; better clarity; greater convenience; no costly chemicals or processor maintenance; and paperless efficiency. Best of all, there is no need for special training, as workflow and placement technique are identical to film.

ScanX Duo from Air Technique is a chair-side intraoral imaging scanner.

ScanX Duo PSP imaging plates are wireless, flexible, wafer-thin, reusable thousands of times, inexpensive, reach places hard sensors cannot and do not require costly replacement like hard sensors.

- Accepts sizes: 0,1,2,3 and 4
- Faster than film: A full mouth series takes less than 2 minutes with ScanX compared to 8 minutes with film
- Achieve the highest image quality: delivers 22 line pairs/mm and 1,100 dots per inch
- ScanX Duo is capable of reading images simultaneously from 2 PSP Imaging Plates

Both practical and cost-effective, ScanX will give you a return on investment in less than a year!

[Click for ScanX Duo on youtube](#)

“Ensure your surgery maintains industry-best standards of infection control”

Tuttnauer have consistently provided infection control solutions around the world since 1925.

Tuttnauer's global experience has earned them a reputation as the experts worldwide on autoclave standards. Tuttnauer have a wide range of innovative cleaning, disinfection and sterilisation products varying in capacity and applications for all sterilisation and disinfection needs in Dental, Medical, Laboratory and Pharmaceutical requirements.

Tuttnauer autoclaves incorporate proven design and engineering features, resulting in a reliable solution that meets every dental practices need.

Tuttnauer Elara 9 & 11 D Line Autoclave

Tuttnauer Class B sterilisers bring the highest sterilisation standards to your dental clinic, maximising patients' safety.

Tuttnauer autoclaves are available in different sizes.

- High speed Class B Autoclave with built-in steam generator
- Advanced control system with multi-colour display and multilingual interface
- 316L grade stainless steel chamber with electro-polish finish
- Self-locking door with double safety locking mechanism
- A perfect fit for standard 60cm shelves & counters
- Provided with stainless steel trays:
 - Elara 9 with 3 trays, 19 Litre
 - Elara 11 with 5 trays, 28 Litre
- Water filling is easily accessible from front or top
- Download cycle data to USB memory device for up to 200 cycles
- Built-in water quality checking feature and alert



“

Our position as market shapers is based on years of experience and **technology leadership**, but our true pride comes from the strong bond of trust we create with our customers, building a mutually successful future.

”

Ran Tuttnauer, CEO



“Ensure your surgery maintains industry-best standards of infection control”



AquaClave Water Treatment System

- Leak Detector - easy to use, hassle free and EFFECTIVE
- USA Manufactured housings - arguably world's best SECURITY
- UPGRADED TRANSFORMER - electrics Australian designed

AquaClave remains a multi-stage system relying on five processes to deliver water to steam sterilisation equipment.

Meticulous attention to all stages of processes of the water includes 1 micron sediment removal and selection of the granular activated carbon specification.

Reverse Osmosis

The reverse osmosis low production AquaClave membrane has been engineered to produce exceptionally high quality in the most challenging water quality environment. To monitor performance a Total Dissolved Solids meter is supplied as part of the product. The two stage polishing system will remove remaining organic and non-organic residues thereby finishing the water to meet all autoclave operating standards.

The availability of high quality water ON TAP avoids the purchasing of bottled distilled water, avoids storage challenges, minimises autoclave maintenance costs and reduces the damage to instruments from tap water rinsing. Improve practice efficiencies and profitability with AquaClave.



Soniclean Ultrasonic Cleaners

Soniclean achieves superior coverage and deep penetration of fine instruments via patented Pulse Swept Power technology, which emits multiple frequency waves versus the standard single frequency waves.

- Very quiet in operation, maintaining a relaxed and professional surgery environment
- Robust, Australian design
- Fully sealed unit, which is easy to clean
- Available in 3, 6 & 10 litre capacities
- Simple to operate



ENDODONTIC MOTORS / APEX LOCATORS

VDW Silver and Gold Reciproc Endodontic Motors

Regardless of the method of preparation Reciproc motors ensure reliability, safety and value. The VDW endo motor has the most effective features and convenient settings to optimise your canal preparations for both Rotary and Reciprocation file systems.

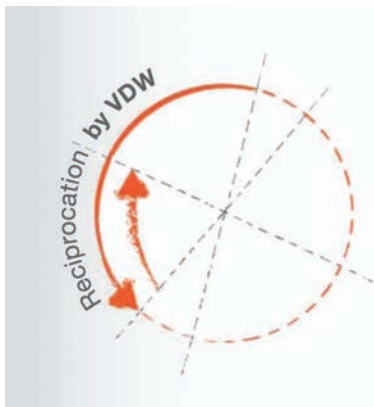
- Safe - minimised risk of instrument fracture
- ASR automatic reverse comfort function-automatic reverse when the set torque limit is reached
- Acoustic warning signal - feedback of increased friction and a signal to switch to brushing file motion to create more space.
- Large file library (Reciprocation and Rotary) in addition to the capability of Doctor's Choice for 15 settings
- Sirona 6:1 Hand piece - ergonomic design and small to fit into confined treatment spaces
- Cordless motor - operates with battery or power supply, even while the battery is charging
- Extended Warranty - three years covers all functions



VDW Gold Reciproc Motor with Integrated Apex locator

The only dual endo motor with integrated length determination and the RECIPROC® mode.

- Integrated apex locator allows you to choose between simultaneous length control and electronic length determinations. The Apex locator can be used with a hand file or with rotary file in the handpiece
- Automatic Apex Stop - when turned on in both rotary and reciprocation modes will automatically halt the instrument when the apex has been reached.
- Accurate Electronic length determination in both humid and dry canal conditions
- Safety enhanced feature ANA programme - reduction of torque limit enhances safety during the preparation of the canals with difficult anatomies
- Convenient - preprogrammed with all reciprocation and major rotary Niti systems



ENDODONTIC MOTORS / APEX LOCATORS



What dentists around the world are saying about Reciproc...

"As every dentist knows, the greatest expense in a dental practice is your time. I would say that using this machine has halved the time it takes me to do a root canal. It's a beautiful little machine that makes you fall in love with doing endodontics again. All my root canals are now done in a single visit and I'm getting much better fills. I've pretty much used every other endodontic system available and Reciproc is the best by a country mile. I recommend Reciproc to everyone. I'm in love with it. Run, don't walk, to buy one!"

Dr Brett Taylor, Leading Edge Dental, Penshurst NSW Australia

"Every now and then, a new technology comes along and sweeps away the old. Reciproc is one of these technologies"

Dr Matt Filei, Camberwell Endodontics, Victoria Australia

"Reciproc has made Endodontics so much easier. Goes around a 90o bend easily...No complicated protocols...After 25 years in practice I finally look forward to molar endo"

Dr Michael Homa, Harrogate England

"With RECIPROC, we made an effortless transition to mechanical preparation methods and thus set another milestone in our practice. Even beginners can learn the method very quickly and it allows users to pare down to just a single tray of clear, easy-to-understand instruments. The majority of root canals can be prepared and filled in a very short time using the method, which allows dental practitioners to work economically while still providing excellent results."

Dr Sarah Forstner, Burgau Bavaria Germany



VDW Raypex 6 Apex Locator

The latest multi-frequency high tech apex locator with an easy touch sets new standards with respect to effectiveness, user friendliness and design

- Accurate - over 95% accuracy (In-vitro study)
- Smart user interface
- Unique colour touch screen with intuitive menu
- Demo mode for clear information to the patient
- Separate Raypex Apical Zoom in traffic light colours
- Convenient - foldable design for space optimisation and protection
- Easy setting choice for Doctor's Choice apical line



ENDODONTIC OBTURATION DEVICES



VDW Guttafusion Oven

Simple to use with optimal results: The proven carrier-based technique for warm 3D obturation with an obturator made entirely of gutta-percha.

3-D Obturation effectiveness

- Homogenous filling of the whole root canal system
- Precise placement of the obturator, even in molars
- Easy removal of handle without additional instruments
- Simplified post space preparation
- No verifiers required when used in conjunction with Reciproc file systems, saving time and money

Simple and easy to use

- Heats obturators in less than one minute, up to two obturators at a time
- Features both visual and acoustic sounds
- Simple cleaning based on special mode



VDW Beefill 2in1

Beefill 2in1 give you time-saving clean and long lasting 3-dimensional obturation using continuous wave obturation of root canals.

Excellent obturator for every tooth

- Highest success rate (90%) with warm vertical condensation * (Toronto study 2003 and 2004)
- Reliable obturation of the entire root canal system (oval canals, isthmi, ramifications, lateral canals)
- Minimal risk of root fractures
- Easy placing of root posts
- Adhesive restoration possible in one session

Convenient Design

- Separation of Down pack and Backfill functionality
- Pre-set options to save preferred settings (speed of flow, temperatures)
- Ergonomic handpiece with 360° operations, activated using the flexible sensor ring
- Excellent visibility of root canal with slim and light handpieces and extra-long canulas
- Safe to use due to visual and audible sounds



SURGERY / MIXING SYSTEMS & AMALGAMATORS



DMG MixStar eMotion

The state-of-the art, fully automatic MixStar eMotion mixing unit builds on the successful features of its predecessor, setting new standards and providing the highest quality for all your impressions.

- Fully automatic for hands-free operation
- Three speed levels, up to twice as fast as previous model
- Two timers for working and setting times to ensure error-free process
- Easy to use and quick processing
- Speed monitoring and electronic speed control
- Suitable for ALL cartridges and foil bags



Heraeus Kulzer Dynamix Speed System

Practical cartridges and the NEW functional Dynamix speed mixer are perfectly matched in this well thought-out system featuring all the advantages of automatic mixing for impression materials.

- Even more time savings due to high speed
- Simple handling and a consistent, void-free mixture
- Together with the consistency of the material, this is the foundation for precise results



Satelec Softly Amalgamator

A high-speed digital amalgamator for use with pre-measured amalgam & glass ionomer capsules

- Microprocessor ensures precise repeatability of time selected for consistent mix
- Very stable, quiet and modern aseptic design
- Deactivates automatically when front cover is open



SURGERY / IMPLANTOLOGY

“The smart way to your success – technology revolution by Bien Air”

Bien Air iChiropro

Implantology is a demanding discipline which is why Bien Air leaves nothing to chance. Created by practitioners for practitioners, **Bien Air iChiropro*** is highly efficient, extremely versatile and designed for a range of applications.

Bien Air's latest creation is a revolutionary assembly in terms of innovation, performance and ease of use for the clinician. The iChiropro application is made significantly easier thanks to the intuitive and ergonomic iPad application.

Improve patient outcomes and practices efficiency with this new simple yet powerful implant and surgery motor.

- Dedicated iPad app
- Regular complimentary app update
- Store, print, export patient data
- Operations report, makes record keeping a breeze
- Pre-programmed operation for all major implant brands
- Implant barcode scanner
- Multi-user settings

* iPad not included



Simple to operate

The parameters of operation can easily be modified: speed, torque, direction of rotation, irrigation flow



Patient file

Allows you to store, check, print and export patient treatment data



Treatment report

All data relating to patients treatment can be stored in the form of graphics or tables and can be attached to the patient file



Pre-programmed applications

The iChiropro application integrates the main implant systems available on the market, along with their complete sequences. 4 pre-programmed applications included.



Implant barcode scanner

Simply scan the reference, batch number and expiry date contained in the implant's barcodes and added to the patient file instantly



Multiple users

Multiple users, with each able to save their own settings.

[Click for iChiropro surgery on youtube](#)



COMPARISON CHART / CHAIRS

CHAIRS

	BELMONT CP ONE PLUS	BELMONT QUOLIS	BELMONT CLESTA II	BELMONT CLAIR	BELMONT CLESTA EIII	BELMONT PRO II 039	BELMONT PRO II 037	
Positioning	Automatic full function program position	4 (P1,P2,P3,LP)	4 (P1,P2,P3,LP)	4 (P1,P2,P3,LP)	4 (P1,P2,P3,LP)	4 (P1,P2,P3,LP)	4 (P1,P2,P3,LP)	
	Controls for manual positioning	8, Fine Adj & H/R	4, Fine Adj	4, Fine Adj	4, Fine Adj	4, Fine Adj	8, Fine Adj & H/R	
	Retractable legrest section	✓	✓	✗	✓	✗	✓	
	Trendelenberg positioning	✓	✓	✓	✓	✓	✓	
	Automatic rinse position with automatic return to the last operating position (LP)	✓	✓	✓	✓	✓	✓	
	Automatic return to entry / exit position	✓	✓	✓	✓	✓	✓	
	Program changes are confirmed quickly and simply	✓	✓	✓	✓	✓	✓	
	Eight function foot control to activate automatic and manual chair functions	✓	✓	✓	✓	✓	✓	
	Highly versatile, finely adjustable movement range	✓	✓	✓	✓	✓	✓	
	Automatic synchronised tilt function	✓	✓	✓	✓	✓	✓	
	Soft start and stop function for added patient comfort	✓	✓	✓	✓	✓	✓	
	Axis movement maximises patient comfort during backrest recline	✓	✓	✓	✓	✓	✓	
	Chair stability in all positions	✓	✓	✓	✓	✓	✓	
Headrest	Stable articulating headrest with multiple angulated back positions	✓	✓	✓	✓	✓	✓	
	Extendable Headrest	✓	✓	✓	✓	✓	✓	
	Removable Headrest	✗	✓	✓	✗	✓	✗	
	All headrest movements are power operated	✓	✗	✗	✓	✗	✓	
	Twin axis articulating headrest	✗	✓	✓	✗	✓	✗	
General & Safety Features	Left hand side armrest	✓	✓	✓	✓	✓	✓	
	Right hand side armrest with 90 degree rotation for entry and exit	✓	✓	✓	✓	✓	✓	
	Automatic safety stop functions	✓	✓	✓	✓	✓	✓	
	Safety lock on all chair movements during handpiece operation	✓	✓	✓	✓	✓	✓	
	Safety design prevents limbs jamming during automatic movements	✓	✓	✓	✓	✓	✓	
	Chair design allows excellent access for the doctor and assistant	✓	✓	✓	✓	✓	✓	
	All upholstery is medical grade, seamless and stitchless for hygiene	✓	✓	✓	✓	✓	✓	
	Easily replaceable flame retardant upholstery	✓	✓	✓	✓	✓	✓	
	High density upholstery underlay for durability and added patient comfort	✓	✓	✓	✓	✓	✓	
	Lumbar support is correct for patients in all chair positions	✓	✓	✓	✓	✓	✓	
	Chair rotation	✗	30 degrees L/R	✗	✗	✗	110 degrees	110 degrees
	Lowest position	400mm	470mm	410mm	480mm	420mm	455/490mm	455/490mm
	Highest Position	800mm	810mm	790mm	745mm	800mm	715/790mm	715/490mm
	Control voltage 24 volts	✓	✓	✓	✓	✓	✓	✓
	Electrical supply 240 volts	✓	✓	✓	✓	✓	✓	✓
	Hydraulic lift and backrest movements	✓	✓	✓	✓	✓	✓	✓
	Décor upholstery colour choice is available	✓	✓	✓	✓	✓	✓	✓

KEY: ✓ Included as standard ✗ Not available o Optional N/A Not applicable E Electric Version



COMPARISON CHART / OPERATING LIGHTS

OPERATING LIGHTS	BELMONT CP ONE PLUS	BELMONT QUOLIS	BELMONT CLESTA II	BELMONT CLAIR	BELMONT CLESTA EIII		BELMONT PROII 039 / 037		
	BEL-HALO 920C	HALO 920Q	BEL-HALO 920	BEL-HALO 920	300	ALYA	BEL-HALO 901	300	ALYA
Colour output degrees Kelvin	5000	5000	5000	5000	5000	5000	5000	5000	5000
Lux – Maximum intensity	32000	3200	32000	3200	31000	50000	32000	31000	50000
Composite mode Lux	5500	5500	5500	5500	4300		5500	4300	
Optimum focal distance for LED 650m	✓	✓	✓	✓	✓	✗	✓	✓	✗
Defined light border to totally eliminate glare for the patient	✓	✓	✓	✓	✓	✓	✓	✓	✓
Multi faceted reflector offers shadowless illumination in the operative field	✓	✓	✓	✓	✓	✓	✓	✓	✓
Protective reflector cover	✓	✓	✓	✓	✓	✓	✓	✓	✓
Operatable light output with up to 70% of the reflector covered	✓	✓	✓	✓	✓	✓	✓	✓	✓
Colour corrected for shade matching	✓	✓	✓	✓	✓	✓	✓	✓	✓
Cool light output for patient comfort	✓	✓	✓	✓	✓	✓	✓	✓	✓
LED Illuminated	✓	✓	✓	✓	✓	✓	✓	✓	✓
Stable multi positional arm and light head with adjustable tension	✓	✓	✓	✓	✓	✓	✓	✓	✓
Sensor switch for on / off function	✓	✓	✓	✓	✓	o	✓	✓	o
Manual master for on / off switch	✓	✓	✓	✓	✓	✗	✓	✓	✗
Bel-Halo 901 and Alya LED Lights Available for Ceiling Mount	ALL	ALL	ALL	ALL	ALL	ALL	ALL	ALL	ALL
Bel-Halo 901 and Alya LED Lights Available for Pole Mount	✗	✗	✗	✗	EIII	EIII	PRO II	PRO II	PRO II

KEY: ✓ Included as standard ✗ Not available o Optional N/A Not applicable E Electric Version



COMPARISON CHART / CUSPIDORS & SUCTION & FACILITIES BOXES

CUSPIDORS & SUCTION	BELMONT CP ONE PLUS	BELMONT QUOLIS	BELMONT CLESTA II	BELMONT CLESTA II PEDESTAL	BELMONT CLESTA EIII
Automatic cuspidor and cup filler activation	✓	✓	✓	✓	✓
Automatic adjustable timed cup filler and cuspidor flush	✓	✓	✓	✓	✓
Manual activation of cup filler and cuspidor flush	✓	✗	✓	✓	✓
Easily detachable cup filler and cuspidor flush nozzles	✓	✓	✓	✓	✓
Easy adjustment of water flow to cuspidor and cup filler	✓	✓	✓	✓	✓
Heated and cool cup filler water	✓	✓	✓	✓	✓
Glass cuspidor bowl	✓	✗	✓	✓	✗
Porcelain cuspidor bowl	✗	✓	✓	✓	✓
Gravity drain cuspidor	✓	✓	✓	✓	✓
Quick disconnect accessory water outlet with volume adjustment control	✓	✓	✓	✓	✓
The cuspidor / suction centre rotates 90 degrees away from the chair	✗	✗	✗	✗	✗
High velocity suction line with finger tip Slide volume control	✓	✓	✓	✓	✓
Saliva ejector suction line with finger tip Slide volume control	✓	✓	✓	✓	✓
Automatic activation and deactivation of all suction lines	✓	✓	✓	✓	✓
Automatic purging of suction lines	✓	✓	✓	✓	✓
Telescopic Assistant's instrumentation holder for easy positioning	✗	✗	✗	✗	✗
Safety stop switch on suction handpiece telescopic holder bar	✗	✗	✗	✗	✗
Quick disconnect on all suction lines	✓	✓	✓	✓	✓
Assistant's autoclave air / water syringe	✓	✓	✓	✓	✓
Syringe air and water pressures are adjustable	✓	✓	✓	✓	✓
For connection to semi dry, wetline and dry line suction motor systems	✓	✓	✓	✓	✓
Automatic dryline separator tank	o	o	✓	o	o
Easy external access to solids collector	✓	✓	✓	✓	✓
Double filtration system for all suction waste	✓	✓	✓	✓	✓
Connection hoses to the junction box are totally concealed	✓	✓	✓	✓	✓
Smooth, rounded and easily cleaned surfaces for hygiene maintenance	✓	✓	✓	✓	✓
Assistant's control panel for chair functions	✓	o	✓	✓	✗

FACILITIES BOXES	BELMONT CP ONE PLUS	BELMONT QUOLIS	BELMONT CLESTA II	BELMONT CLESTA II PEDESTAL	BELMONT CLESTA EIII
External air and water pressure monitor gauges	✓	✓	✓	✓	✓
External access to main fuse and control fuse	✗	✗	✗	✗	✓
Air and water filters	✓	✓	✓	✓	✓
Air and water regulators	✓	✓	✓	✓	✓
Electrical supply - 240 volts	✓	✓	✓	✓	✓
Transformer to provide low voltage (24 volts) to the unit	✓	✓	✓	✓	✓
Main air line valve to drain compressor condensation	✓	✓	✓	✓	✓
Ample space for the connection of waste and vacuum hoses	✓	✓	✓	✓	✓
All taps supplied	✓	✓	✓	✓	✓

KEY: ✓ Included as standard ✗ Not available o Optional N/A Not applicable E Electric Version



COMPARISON CHART / DOCTOR'S CONSOLES

DOCTOR'S CONSOLES

	BELMONT CP ONE PLUS	BELMONT QUOLIS	BELMONT CLESTA II	BELMONT CLESTA II PED.	BELMONT CLESTA EIII
Chair mounted stable arm system	✓	✓	✓	Pedestal Mount	✓
Wall mounted stable arm system with air lock brake	X	X	X	X	X
Air operated armbrake	X	✓	✓	✓	✓
Mobile cart system with height adjustment	X	X	X	X	X
Optic handpiece lines supplied (Can be converted to optic lines)	✓	✓	✓	✓	✓
Handpiece line couplings accept all recognised handpiece brands	✓	✓	✓	✓	✓
Adjustable air pressure for each handpiece line	✓	✓	✓	✓	✓
Individual handpiece line water pressure is easily adjustable	✓	✓	✓	✓	✓
Chip / mist air with individually adjustable pressure on each handpiece line	✓	✓	✓	✓	✓
Individual handpiece line flushing system	✓	✓	✓	✓	✓
Integrated non retraction water coolant	✓	✓	✓	✓	✓
Handpiece line material	Silicon Sleeved Tubes	Silicon Sleeved Tubes	Silicon Sleeved Tubes	Silicon Sleeved Tubes	Silicon Sleeved Tubes
Integrated optic system for handpieces	✓	✓	✓	✓	✓
Handpiece drive air pressure monitor gauge	✓	✓	✓	✓	✓
First Priority handpiece system – only the first selected handpiece is active	✓	✓	✓E	✓E	X
Integrated electronic micro motor speed program	✓	✓	✓E	✓E	X
Integrated electronic micro motor forward / reverse control	✓	✓	✓E	✓E	X
Integrated control system for electronic micro motor	✓	✓	✓E	✓E	X
Integrated control system for ultrasonic scaler	✓	✓	✓E	✓E	X
Multiple positioning for handpiece holder	✓	✓	✓	✓	✓
Doctors autoclave air / water syringe	✓	✓	✓	✓	✓
Syringe air and water pressures are adjustable	✓	✓	✓	✓	✓
Doctors control panel for all chair functions	✓	✓	✓	✓	✓
Fibre optic handpiece light on/off switch	✓	✓	✓	✓	✓
Operating light on/off switch	✓	✓	✓E	✓E	X
Doctors cuspidor and cup filler activation switch	✓	✓	✓	✓	✓
Master switch with indicator for entire package activation and de-activation	✓	✓	✓	✓	✓
Doctor large surface work area	✓	✓	✓	✓	✓
Interchangeable position of doctors table work surface area right/left	X	X	✓	✓	X
Intra oral size xray film viewer	X	X	✓	✓	X
Panoramic size xray film viewer	o	X	o	o	✓

continued next page

KEY: ✓ Included as standard X Not available o Optional N/A Not applicable E Electric Version



COMPARISON CHART / DOCTOR'S CONSOLES

continued from previous page

DOCTOR'S CONSOLES	BELMONT CP ONE PLUS	BELMONT QUOLIS	BELMONT CLESTA II	BELMONT CLESTA II PED.	BELMONT CLESTA EIII
Panoramic size xray film viewer	o	X	o	o	✓
Integrated computer / TV flatscreen monitor	o	o	o	o	o
Integrated intra oral camera	o	o	o	o	o
Integrated ultra-sonic scaler	o	o	o	o	o
Integrated electric micro motor	o	o	o	o	o
Integrated curing light	o	o	o	o	o
Integrated facilities box	✓	X	✓	✓	X
Remote facilities box	X	✓	X	X	✓
Connection hoses to the junction box are totally concealed	✓	✓	✓	✓	✓
Oil mist collector	✓	✓	✓	✓	✓
Smooth rounded surfaces for hygiene maintenance	✓	✓	✓	✓	✓
Available in standard handpiece delivery format	✓	✓	✓	✓	✓
Available in continental handpiece delivery format	X	X	✓	✓	X
Sturdy variable foot control for all handpiece functions	✓	✓	✓	✓	✓
Electronic foot control for all handpiece functions	✓	X	X	X	X
Spare electrical lines for adding accessory equipment	✓	✓	✓	✓	✓
Self-contained water supply system	o	o	o	o	✓
Handpiece purge system	✓	✓	✓	✓	✓

KEY: ✓ Included as standard X Not available o Optional N/A Not applicable E Electric Version



VISIT OUR SHOWROOM



SYDNEY:
Unit 3, 26-34 Dunning Ave
Rosebery NSW 2018



MELBOURNE:
Ground Floor West,
192 Burwood Rd, Hawthorn VIC 3122



BRISBANE:
Unit 5, 106 Fison Ave West,
Eagle Farm QLD 4009



AUCKLAND:
Level 1, Ascot Central, 7 Ellerslie
Racecourse Drive, Greenlane
1051 Auckland New Zealand

