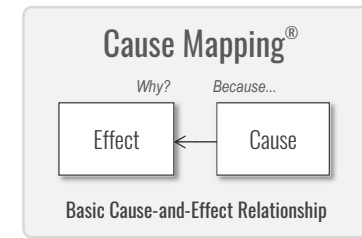
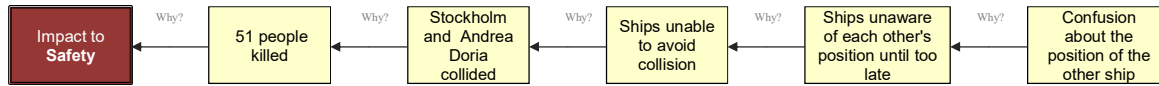


The Sinking of the Andrea Dora

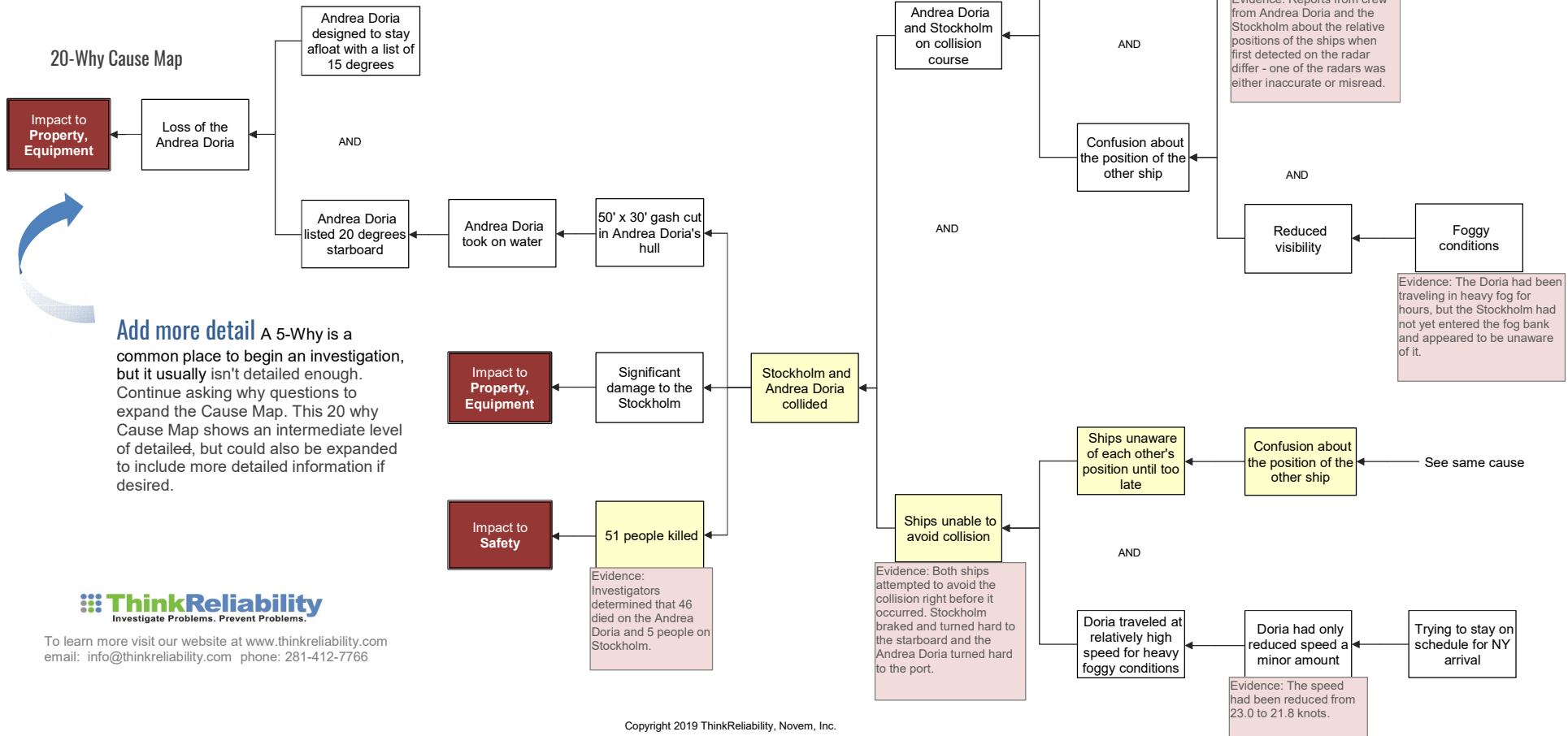
On July 25, 1956, the Andrea Doria, a luxury passenger liner, sunk after colliding with another passenger liner called the Stockholm. The Stockholm was outfitted with a reinforced icebreaking bow and it cut a 50 ft by 30 ft gash in the side of the Andrea Doria and the ship quickly began to take on water. The Stockholm suffered significant damage but remained afloat. The collision killed 51 people, 46 on the Andrea Doria and 5 on the Stockholm.

5-Why Cause Map



Start by asking "why" A Cause Map, a visual format for performing a root cause analysis investigation, can be built to intuitively laying out the causes that contributed to the sinking of the Andrea Doria. A Cause Map is built by starting at one of the impacted goals and asking "why" questions. For this root cause analysis example, we'll start at the safety goal which was impacted because 51 people were killed.

20-Why Cause Map



Add more detail A 5-Why is a common place to begin an investigation, but it usually isn't detailed enough. Continue asking why questions to expand the Cause Map. This 20 why Cause Map shows an intermediate level of detailed, but could also be expanded to include more detailed information if desired.



To learn more visit our website at www.thinkreliability.com
 email: info@thinkreliability.com phone: 281-412-7766