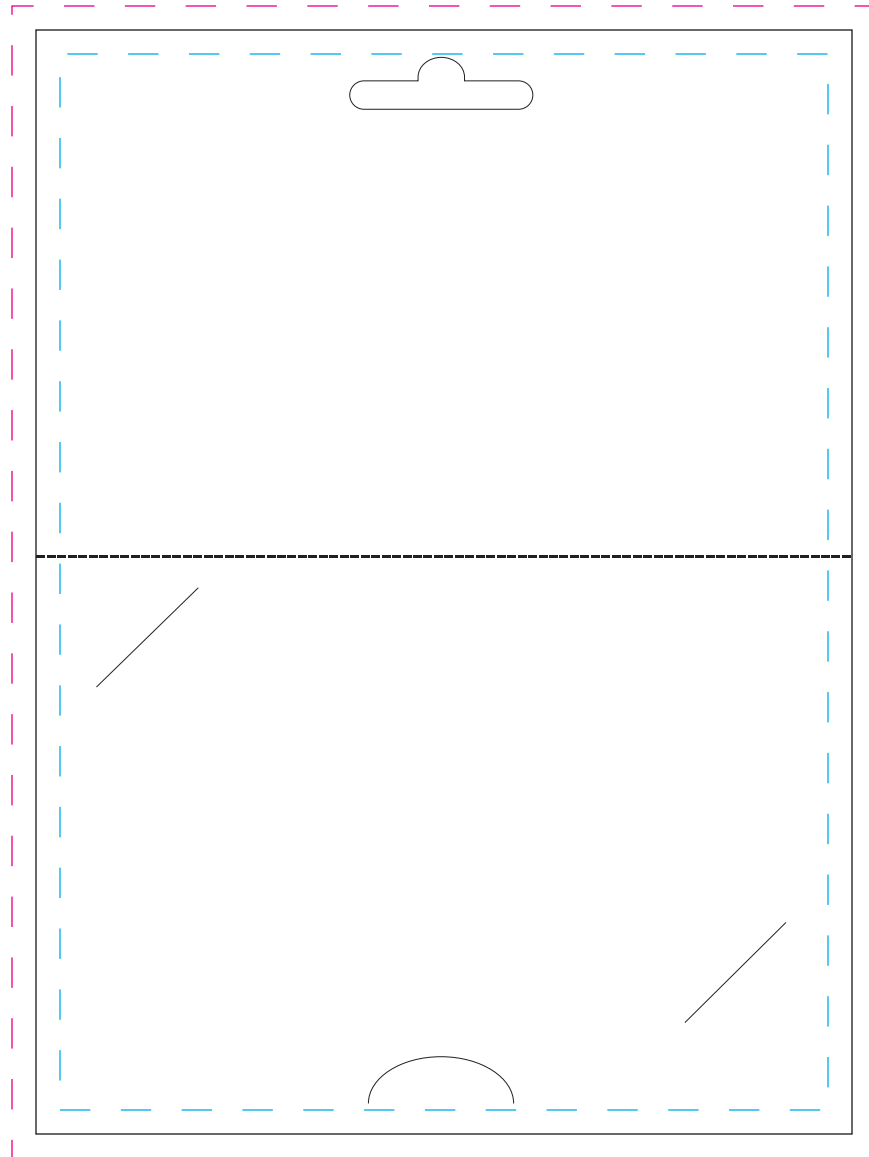


210 Template - How to use:

1. Use File > Open, to open this PDF in Illustrator, or your Preferred Adobe Program.
2. Copy the Dieline to your Workspace on a new layer and label "FPO" (For Position Only).
3. Create your artwork on a separate layer labeled "Artwork".
4. When you are finished convert your text to outlines by selecting all (make sure all layers are unlocked) and selecting Type > Create Outlines in Illustrator. In Photoshop you can rasterize your type layers.



210 - BACKER - 8 up
4.25 x 5.75 - Backer
Sombrero Hanger Tab

- ✦ BLEEDS - If you want your artwork to extend to the edge of the card, a bleed of no less than 1/8" must be used.
- ✦ GUTTERS - Do to movement during production, all text and graphics should be at least 1/8" away from the edge of the card. This is your safe zone. This does not include your bleed.