

# Objective Driven Performance Management

## Performance Measurement

The ability to achieve an organization's operational goals is hampered when there is a gap between Operational Strategy and day-to-day operations. In many cases, this gap exists due to a lack of alignment between the organization's objectives and its key business processes. How can a company improve the overall reliability of its asset infrastructure, for example, when its asset management processes are not designed and implemented with that objective in mind? Exacerbating this gap, is the inability to measure progress toward such a goal, due to inaccurate, unavailable or generally untrustworthy data associated with those processes.

Performance Management, used by high performing organizations, fills this gap by focusing on the health and management of key business processes to ensure organizational alignment and effectiveness in execution.

This Objective Driven approach seeks to create a "line of sight" from Operational Objectives to day-to-day Operational activities. In addition to addressing the trustworthiness of data, Performance Management clearly identifies:

- How achievement is measured
- Where an organization needs to focus
- What are the results of improvement initiatives

Achieving objectives requires more than simple reporting and business intelligence.

Propel™ is able to unite disparate data sources and unlock the insights trapped in transactional systems, so organizations can optimize performance. **With Propel, organizations can measure and visualize business outcomes in enterprise asset management, while exposing the impediments to achieving world class performance.**

Propel fosters the alignment of organizational objectives with all critical asset management business processes. (Safety, Environmental, Operations, Finance, Supply Chain, Capital Planning, Human Resources, etc.).



## Performance Management goes beyond Business Intelligence

Achieving operational goals requires more than a dashboard of KPIs. Measuring and visualizing results relative to performance expectations is indeed an important component of performance management, but much more is required, including:

- Clear organization of objectives
- Alignment of objectives, processes, measures, and data
- A means to identify and visualize the result of initiatives
- Automate monitoring of performance
- Planning and tracking of activities
- Collaboration and communication amongst all stakeholders.



## Collaboration

Propel promotes engagement on continuous improvement initiatives with capabilities for communication and collaboration. Users can now work more effectively together to achieve outcomes by capturing knowledge and interaction and making it accessible where it is most important and not otherwise trapped in email systems or stale documents, spreadsheets and slide shows.

## Process Automation

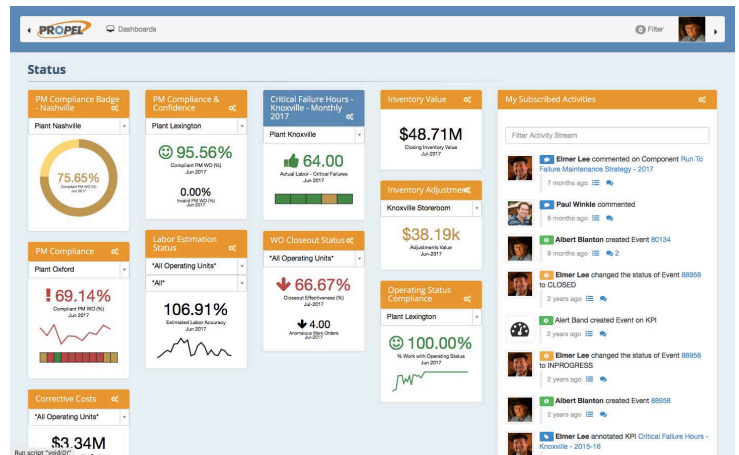
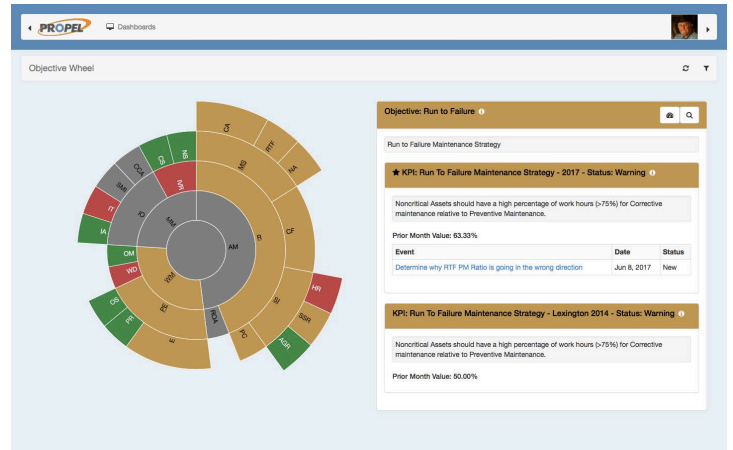
Propel enables organizations to monitor performance from anywhere, anytime, in the foreground, or in the background. Users can receive real time alerts sent by triggers that monitor arising performance issues and events. This allows organizations to focus on what needs attention.

## Data Confidence

Propel ensures that organizations are making decisions based on trustworthy information. Data screening capabilities in Propel offer organizations the ability to identify data anomalies and measure overall data quality, allowing remediation and improvement plans to be implemented, generating measurable results.

## Industry Acumen

Designed by business experts for business experts, Propel addresses the needs of asset-intensive industries where engineering, maintenance, and supply chain processes need to sustain high-performing results that enable safe, reliable, and compliant operations.



Cohesive Solutions, is a leading enterprise asset management consultant, certified Premier Level IBM Business Partner and systems integrator. Cohesive Solutions provides business transformation and consulting services that enable organizations to achieve higher asset ROI as well as deliver a unique performance management solution, Propel, that unlocks hidden potential while aligning business performance goals. Since 1990 Cohesive Solutions has provided world class services to North American organizations. Learn more at [cohesivesolutions.com](http://cohesivesolutions.com)

123 Town Park Drive, Suite 240  
Kennesaw, Georgia 30144

678-233-1280

[www.cohesivesolutions.com](http://www.cohesivesolutions.com)

©2017CohesiveInformationSolutions.Allrightsreserved

