

# Zero Downtime Maximo Upgrades



- Mike Beasley – Vice President



- Bill Wallace – Technical Manager



# About Cohesive Solutions

- Cohesive Solutions operates out of Kennesaw, Georgia. Cohesive provides business process transformation and consulting services which enables organizations to achieve higher ROI from their assets and the information technology that manages and maintains those assets. Cohesive's professionals have been serving clients since 1990.
- For more information visit [www.cohesivesolutions.com](http://www.cohesivesolutions.com) or contact Mike Beasley at [mbeasley@cohesivesolutions.com](mailto:mbeasley@cohesivesolutions.com).

# Introduction

- Joint team of largest U.S. Maximo integrator with UK-Based global solution provider
- Both Gold accredited IBM Partners & Resellers

## Extensive knowledge and experience of EAM

- Maximo Services
- Consultancy
- Training

## Plus our Value Added Solutions (VAS):

- Data Replication (SDR)
- Zero Downtime Upgrades (SDU)

A large, stylized orange cloud with a white outline and a subtle gradient, centered on the page. The text 'SDU' is written in white, bold, sans-serif font inside the cloud.

SDU

# SRO Clients

Delivering the entire range of Maximo systems & services as well as Upgrade services and Replication



Trinity House



# SDU (SRO Dynamic Upgrader)

IBM approached SRO with a view to using their Maximo Replication Solution to assist in reducing downtime for Maximo Upgrades

SRO confirmed this was not suitable but assisted the IBM team in building a new solution solely focussed on the Maximo Upgrade

The solution does not replace the upgrade. It instead works alongside the IBM process (it can also merge into brand new configurations) migrating and transforming all your daily created data regardless of how long the upgrade takes.

Some of the main benefits include

- Reduction of your upgrade outage timeframe
- Enables testing/training in your future live environment
  - Ensuring the system is 100% ready
- Reduces the risk of the upgrade outage being extended or cancelled due to a failure
  - No risk of rolling back as the system has already been upgraded

# Official IBM Maximo

## Upgrade Process

Completed using a live database snapshot

Maximo

Maximo

6.x or 7.x

Send Data Changes to Dynamic Upgrade

7.x

Activate Change

Capture

ACTIVATE

SDU

CHANGES



Turn Live Maximo Off

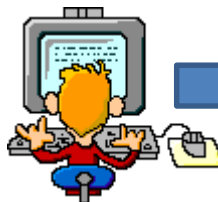
Other Cutover

Ready for Testing,

Training and

Processing

Acceptance





# SDU Summary

## **The SDU enables Maximo upgrades with massively reduced or no downtime**

- Runs in parallel to your upgrade capturing all user data changed in the live system
- Allows users to continue working in live whilst the upgrade is completed
- The Maximo upgrade downtime is removed – the outage window is reduced
- The risk of a failed or delayed Maximo upgrade is no longer a concern as it is completed ahead of time
- The amount of time the Maximo upgrade takes is also no longer a concern

## **Testing and Training with current Live data**

- Synchronise the data to multiple environments allowing users to test their upgraded system with data coming straight from live

## **Transform old/obsolete transactions**

- The SDU can assist with transforming old data. Example: Status' that are no longer used or merging to a new status list. Ask us about an requirement you may have

## **Handle data changes required late in the project**

- Data can be resynchronised from any point in time since activation allowing any table data changes to be catered for all the way to go live if required
- Can also be applied to a situation where a late patch level change is required for Maximo defect resolution

## **Can also be used to synchronise your live data with a development/test environment**

- Designed for long term usage in environments where restoring live into your training environment takes too much time and resource

# Demo . . .

