

Maximo Anywhere: Maximo Mobility Strategy Come True!

Rahul Desai, Maximo Offering Management

Robert Blain, Client Technical Professional

Mitesh Mistry, Architect/Designer

InterConnect 2017



Please note

IBM's statements regarding its plans, directions, and intent are subject to change or withdrawal without notice at IBM's sole discretion.

Information regarding potential future products is intended to outline our general product direction and it should not be relied on in making a purchasing decision.

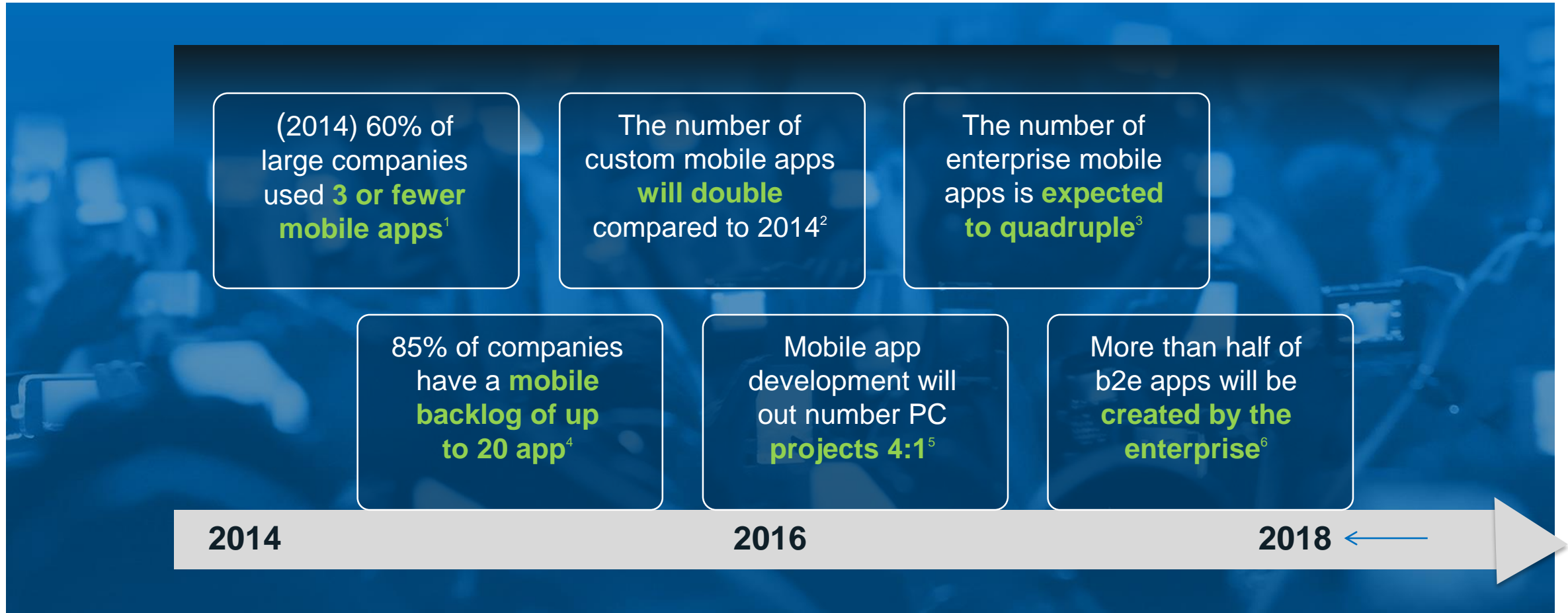
The information mentioned regarding potential future products is not a commitment, promise, or legal obligation to deliver any material, code or functionality. Information about potential future products may not be incorporated into any contract.

The development, release, and timing of any future features or functionality described for our products remains at our sole discretion.

Performance is based on measurements and projections using standard IBM benchmarks in a controlled environment. The actual throughput or performance that any user will experience will vary depending upon many factors, including considerations such as the amount of multiprogramming in the user's job stream, the I/O configuration, the storage configuration, and the workload processed. Therefore, no assurance can be given that an individual user will achieve results similar to those stated here.

Our Mobile Strategy and Product Update

Mobile continues to explode in the enterprise



Maximo Mobility Solution from IBM

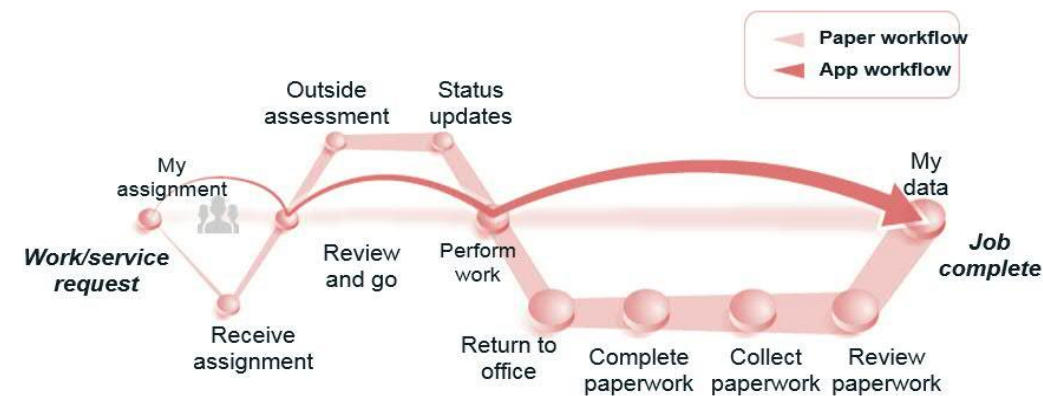
Platform Based and Open Architecture

Seamless Connected and Disconnected support

Role and Task Based Hybrid Mobile Applications

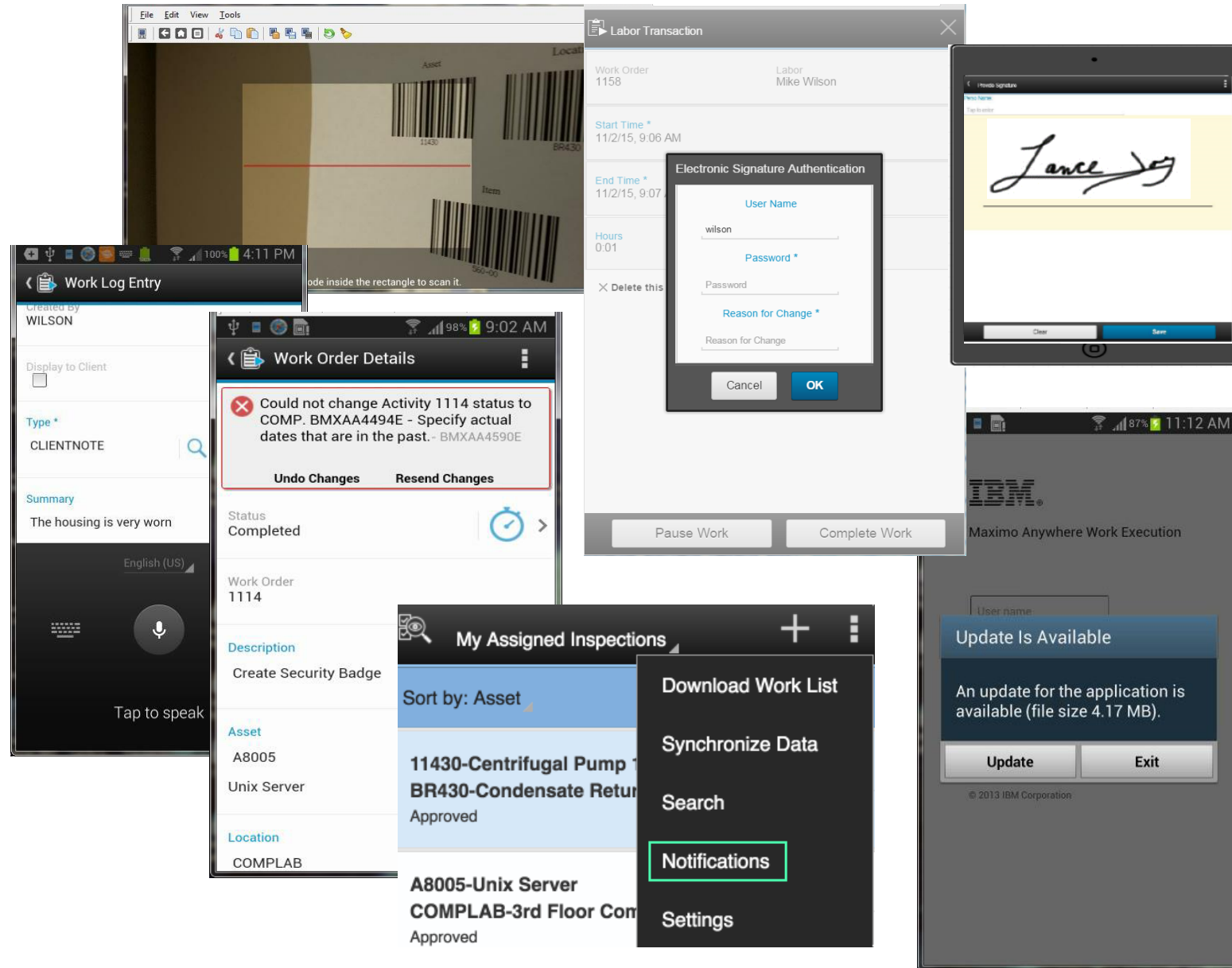
Works Across iOS, Android, Windows Tablet

Maximo Based Administration



Platform Features - available with every Anywhere App

- ✓ Online and Offline Map Support
- ✓ Barcode/ QR Code support
- ✓ RFID support
- ✓ Attachments
- ✓ Camera and Voice to Text
- ✓ E-Signature / Real Signature
- ✓ Error Handling
- ✓ App Version management
- ✓ GPS Support
- ✓ Push Notification



Out of the Box Ready Apps

Work Management	Inventory Management	Asset Management	Industry Solutions
Work Execution	Physical Count	Asset Data Manager	Work Exec for Calibration
Inspection	Issue & Returns	Asset Audit	Incident Reporter (O&G, HSE)
Approval	Transfer & Receiving		Work Exec for Complex Assets (ACM/ Aviation)
Service Request			E Flight Log Book (Aviation/ACM)

Maximo Based Anywhere Administration Application

Maximo Based Anywhere Administration Application

- **List Data:** Create & manage queries
- **Lookup Data:** Control/limit data downloaded to device
- **Settings:** App level enablement settings
- **Notification Events:** Push Notification
- **Global Properties:** All app level settings, like control attachment download limit...

Global Properties		
Filter > 1 - 15 of 20		
Property	Description	Value
si.att.proxy.maxfilesize	The max file size of the attachment files to download, anything larger is skipped, 5 Mbytes	5242880
si.attach.doclink.doctype.defpath	Attachments upload path	anywheredoclinks
si.attach.uploadmaxsize	Default 10 MB, Upload limit for the file attachment to the server, make sure size configured here is equal or less than server size	10485760
si.attachment.basedirectory	Controls the location of the folders that are created by multiple users. If you share a mobile device, the attachments could reside in multiple user directories.	anywhere
si.device.connectivity.timeout	Timeout to be used when connecting with adapter to get working data (in milliseconds)	10000
si.device.connectivity.timeout.interval	Waiting time before try to access the remote system after a timeout error (in milliseconds)(use 0 for no interval)	5000
si.device.connectivity.timeout.stablepagination	Timeout to be used when downloading large sets of data like lookup data using stable pagination (in milliseconds)	360000
si.device.downloadAttachmentsWithBulkDownload	Should we automatically download the attachment files when the worklist is being downloaded	true
si.device.onlyBulkDownloadPrintWithReportAttachments	Should we only download attachment files whose print with report flag is set to true	true
si.map.directionsPathColor	Configure the color of path used on directions. The pattern is: AARRGGBB	7F0000FF
si.map.directionsPathWidth	Configure the thickness of path used on directions	5
si.map.esri.authentication.isEnabled	When set to 1, this property defines that authentication support is enabled	0
si.map.esri.isGetMethodEnabled	The method that will be used to generate token for directions routes	0
si.map.esri.password	The password for accessing esri server services	
si.map.esri.refererService	The url used as parameter for the server that will be used to generate the token	http://www.arcgis.com
OK Cancel		

Maximo Anywhere Work Execution				
Filter > 1 - 2 of 2				
Resource	QueryBase ID	Query Description	Group	Sequence
woHistory	woHistoryFilter	Query to filter Worker Order result by on		10
workOrder	getMyAssignedWor	My Assigned Work		20
New Row				

Maximo Anywhere: 19 Supported Languages

- English
- Brazilian Portuguese
- Czech
- Danish
- Dutch
- French
- Finnish
- German
- Hungarian
- Japanese
- Korean
- Norwegian
- Polish
- Russian
- Simplified Chinese
- Spanish
- Swedish
- Traditional Chinese
- Italian

Maximo Anywhere: Licensing and Migration Options

Authorized and Concurrent User Licensing metric

Includes use of ALL Anywhere applications*

- 1. Mobile Only:** Requires only the Maximo Anywhere licensing to use the Anywhere mobile apps. Users only access Maximo via Anywhere apps.
- 2. Mobile & Desktop:** Requires Maximo Anywhere and appropriate Maximo core entitlement. Sold/priced as an Add-on to Maximo license
- 3. Existing Maximo Mobile customers:** May migrate their licenses (in whole or in part) to Maximo Anywhere at no charge when similar functional apps exist
- 4. Trade-up from Maximo Everyplace:** Can purchase trade-up licenses to move from Maximo Everyplace to Maximo Anywhere

Maximo Anywhere: SaaS Offering



Available Now ...

- ❑ Available with Maximo SaaS and SaaS Flex
- ❑ Mobile Only and Add-on Licenses
- ❑ Authorized and Concurrent Users
- ❑ Android and iOS Support

Benefits of IBM SaaS Offering

- ✓ Lower cost of ownership
- ✓ Faster time to value
- ✓ Scalability
- ✓ Less strain on IT resources
- ✓ Shift costs from CAPEX to OPEX

2016 Releases - Maximo Anywhere 7.6 & 7.6.1

Rapidly releasing new capabilities for quicker time to value.

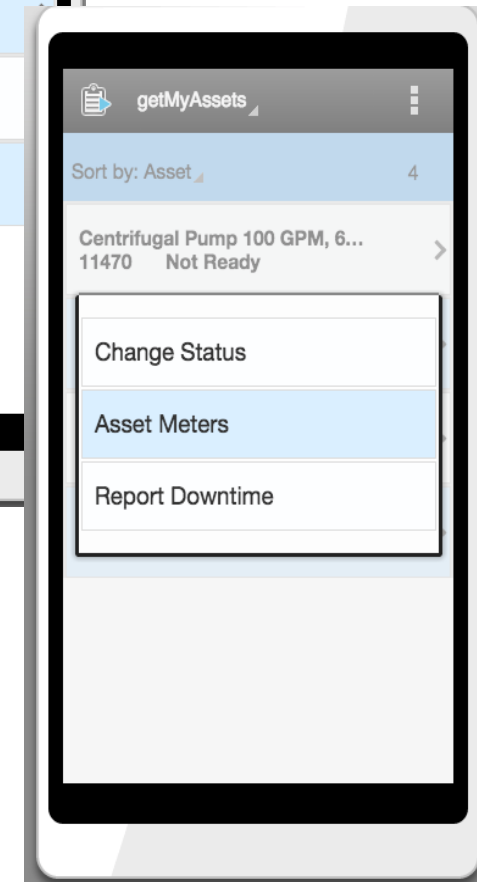
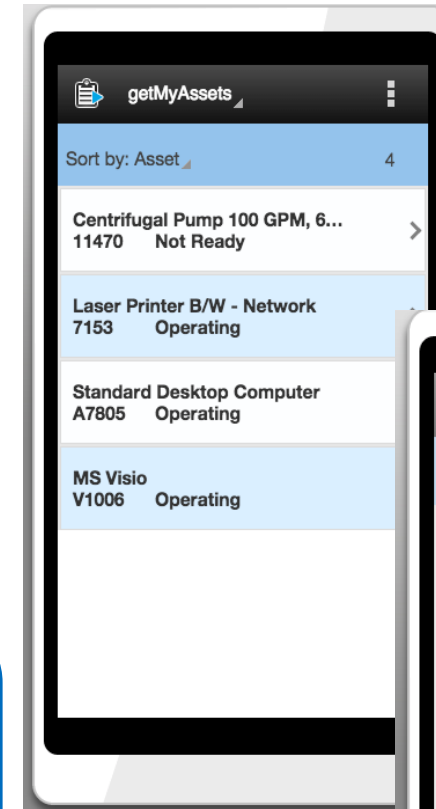
✓ DELIVERED

APPLICATIONS

Asset Audit, Asset Data Manager, Asset Moves
Receiving, Material Transfers, Issues & Returns
Service Requests
Work Execution Enhancements- Report Downtime
Work Execution for Calibration
Incident Reporting (O&G)

PLATFORM

E- Sig & Real Signature Capture
Push Notifications
RFID, GPS
Style & Usability Changes
Offline & Online maps (ESRI/ArcGISOnline)



Our Mobility Path Forward

Enhancements Themes for Coming Releases

Location Based Services and Advanced Map Capabilities

- Enhance map control - ESRI, Google
- Send device position to Maximo.
- Modify work on a map
- Query work, assets, locations, labor based on device position.
- Redlining and mark ups.
- Linear Asset Management

Application Enhancements

- Crews & Crew Management
- Time Sheet Reporting
- Request Material
- Inspection Enhancements
- Updates to current applications

Industry Solution Applications

- Operator Rounds (Nuclear)
- Clearance Field Tagging (Nuclear)
- Permit Request (O&G, HSE)
- Hazard Checklist (O&G, HSE)
- CU In Progress Enhancements (Utilities)

Platform

- Simplified Build and Deploy
- Data download modes
- OS Currency
- Accessibility
- Configurability
- Performance Improvements
- Style and Usability Enhancements
- Serviceability

Field Service Management with Maximo

Completion of Work

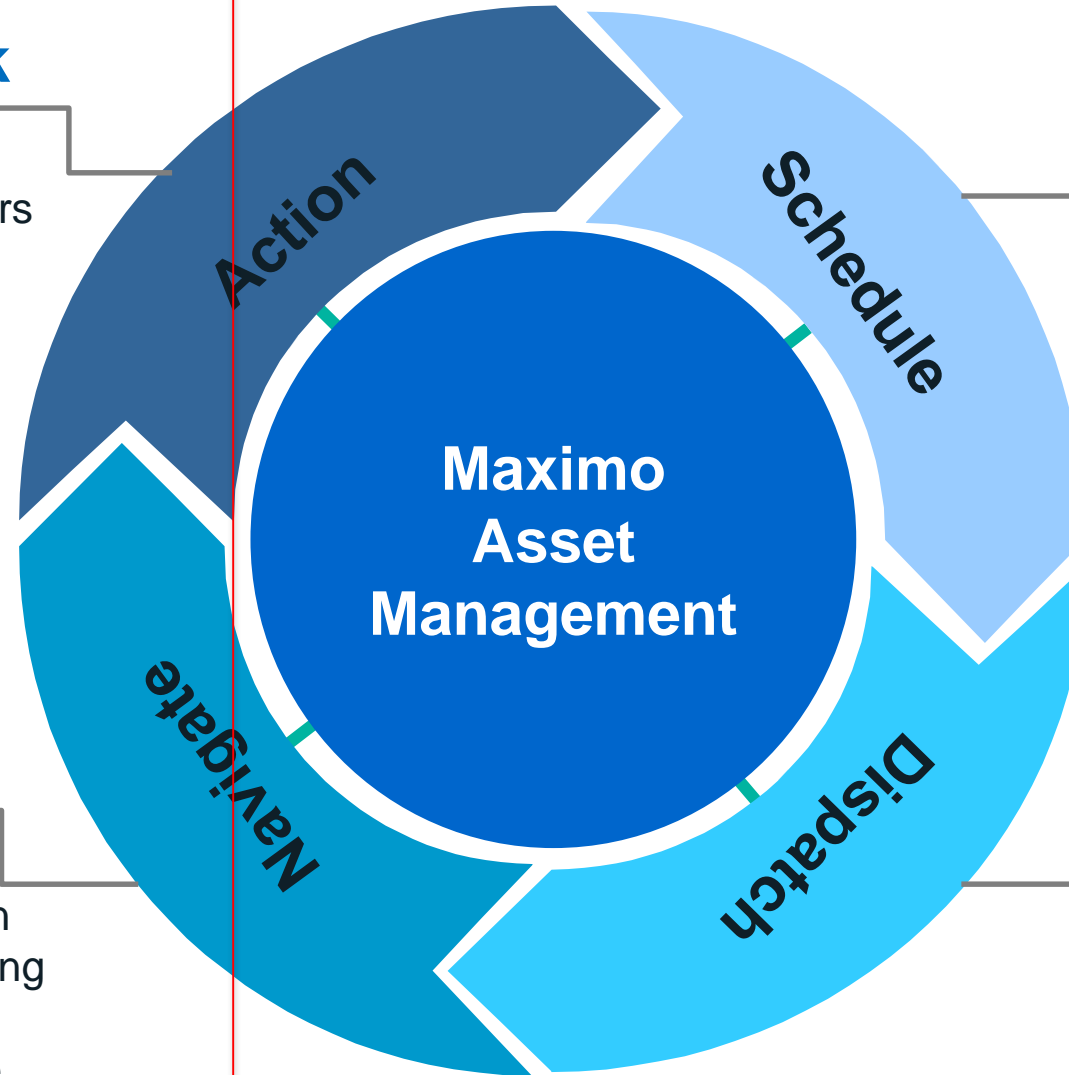
Anywhere

- Technician receives work orders in the field
- Provides real-time status updates to dispatcher and the back-office

Mapping of Work

Spatial/Anywhere/Plus

- Optimization of work route on an Esri/Google/Bing map along with turn-by turn directions displayed on a mobile device
- Incorporate real-time traffic



Planning of Work

Scheduler/Scheduler Plus

- Forecast and schedule work
- Incorporate weather data
- Optimization of work via resource leveling or capacity planning
- Plan and schedule appointments

Assignment of Work

Scheduler/Scheduler Plus

- Optimize resource assignment based on geolocation, craft, skill, weather
- Monitor work and adjust based on real-time field progress

Maximo Anywhere 2017 Plans

ISM Library & Q3 2016 (Delivered)

Maximo Anywhere 7.6.1

Application Enhancements

- Additional Calibration functions
- ESRI/Offline Maps on Windows
- Asset Data Manager Additions
- Incident Reporting (HS&E, O&G)

Platform Enhancements

- RFID Capabilities
- Push Notifications
- Further Style & Usability Changes
- OS Currency

Available as SaaS

ISM Library & Q2 2017

Maximo Anywhere 7.6.x

Application Enhancements

- Work Exec. Map Enhancements
- Operator Rounds (Nuc)

Platform Enhancements

- Simplified Build and Deploy
- Data Download Modes
- Location Based Services
- Map Control - ESRI
- Map based Query
- Modify Work on Map
- Accessibility
- OS Currency

ISM Library & Q4 2017

Maximo Anywhere 7.y

Application Enhancements

- Time Sheet Reporting
- Request Material
- Crew Management
- Clearances Field Tagging (Nuc)

Platform Enhancements

- Additional Map Capabilities
- Style & Usability Changes
- OS Currency

•The information on the new product is intended to outline our general product direction and it should not be relied on in making a purchasing decision. The information on the new product is for informational purposes only and may not be incorporated into any contract. The information on the new product is not a commitment, promise, or legal obligation to deliver any material, code or functionality. The development, release, and timing of any features or functionality described for our products remains at our sole discretion.

Mobile Product Consolidation Plan

2013

Maximo Anywhere

Maximo Mobile
Work Mgr

Maximo Mobile
Inventory Mgr

Maximo Mobile
Asset Mgr

Maximo Everyplace

2015

Maximo Anywhere

Maximo Mobile
Work Mgr

Maximo Mobile
Inventory Mgr

Maximo Mobile
Asset Mgr

Maximo Mobile customers can opt to migrate to Anywhere or stay on current technology

Maximo Everyplace

Maximo Everyplace has been merged into core Maximo

2017+

Maximo Anywhere

End of Market

Maximo Mobile
Work Mgr

Maximo Mobile
Inventory Mgr

Maximo Mobile
Asset Mgr

Maximo Mobile customers entitlement will be mapped to Maximo Anywhere.

•The information on the new product is intended to outline our general product direction and it should not be relied on in making a purchasing decision. The information on the new product is for informational purposes only and may not be incorporated into any contract. The information on the new product is not a commitment, promise, or legal obligation to deliver any material, code or functionality. The development, release, and timing of any features or functionality described for our products remains at our sole discretion.

Demo

Notices and disclaimers

Copyright © 2017 by International Business Machines Corporation (IBM). No part of this document may be reproduced or transmitted in any form without written permission from IBM.

U.S. Government Users Restricted Rights — use, duplication or disclosure restricted by GSA ADP Schedule Contract with IBM.

Information in these presentations (including information relating to products that have not yet been announced by IBM) has been reviewed for accuracy as of the date of initial publication and could include unintentional technical or typographical errors. IBM shall have no responsibility to update this information. **This document is distributed “as is” without any warranty, either express or implied. In no event shall IBM be liable for any damage arising from the use of this information, including but not limited to, loss of data, business interruption, loss of profit or loss of opportunity.** IBM products and services are warranted according to the terms and conditions of the agreements under which they are provided.

IBM products are manufactured from new parts or new and used parts. In some cases, a product may not be new and may have been previously installed. Regardless, our warranty terms apply.”

Any statements regarding IBM's future direction, intent or product plans are subject to change or withdrawal without notice.

Performance data contained herein was generally obtained in a controlled, isolated environments. Customer examples are presented as illustrations of how those customers have used IBM products and

the results they may have achieved. Actual performance, cost, savings or other results in other operating environments may vary.

References in this document to IBM products, programs, or services does not imply that IBM intends to make such products, programs or services available in all countries in which IBM operates or does business.

Workshops, sessions and associated materials may have been prepared by independent session speakers, and do not necessarily reflect the views of IBM. All materials and discussions are provided for informational purposes only, and are neither intended to, nor shall constitute legal or other guidance or advice to any individual participant or their specific situation.

It is the customer’s responsibility to insure its own compliance with legal requirements and to obtain advice of competent legal counsel as to the identification and interpretation of any relevant laws and regulatory requirements that may affect the customer’s business and any actions the customer may need to take to comply with such laws. IBM does not provide legal advice or represent or warrant that its services or products will ensure that the customer is in compliance with any law.

Notices and disclaimers continued

Information concerning non-IBM products was obtained from the suppliers of those products, their published announcements or other publicly available sources. IBM has not tested those products in connection with this publication and cannot confirm the accuracy of performance, compatibility or any other claims related to non-IBM products. Questions on the capabilities of non-IBM products should be addressed to the suppliers of those products. IBM does not warrant the quality of any third-party products, or the ability of any such third-party products to interoperate with IBM's products. **IBM expressly disclaims all warranties, expressed or implied, including but not limited to, the implied warranties of merchantability and fitness for a particular, purpose.**

The provision of the information contained herein is not intended to, and does not, grant any right or license under any IBM patents, copyrights, trademarks or other intellectual property right.

IBM, the IBM logo, ibm.com, Aspera®, Bluemix, Blueworks Live, CICS, Clearcase, Cognos®, DOORS®, Emptoris®, Enterprise Document Management System™, FASP®, FileNet®, Global Business Services®, Global Technology Services®, IBM ExperienceOne™, IBM SmartCloud®, IBM Social Business®, Information on Demand, ILOG, Maximo®, MQIntegrator®, MQSeries®, Netcool®, OMEGAMON, OpenPower, PureAnalytics™, PureApplication®, pureCluster™, PureCoverage®, PureData®, PureExperience®, PureFlex®, pureQuery®, pureScale®, PureSystems®, QRadar®, Rational®, Rhapsody®, Smarter Commerce®, SoDA, SPSS, Sterling Commerce®, StoredIQ, Tealeaf®, Tivoli® Trusteer®, Unica®, urban{code}®, Watson, WebSphere®, Worklight®, X-Force® and System z® Z/OS, are trademarks of International Business Machines Corporation, registered in many jurisdictions worldwide. Other product and service names might be trademarks of IBM or other companies. A current list of IBM trademarks is available on the Web at "Copyright and trademark information" at: www.ibm.com/legal/copytrade.shtml.

Questions

