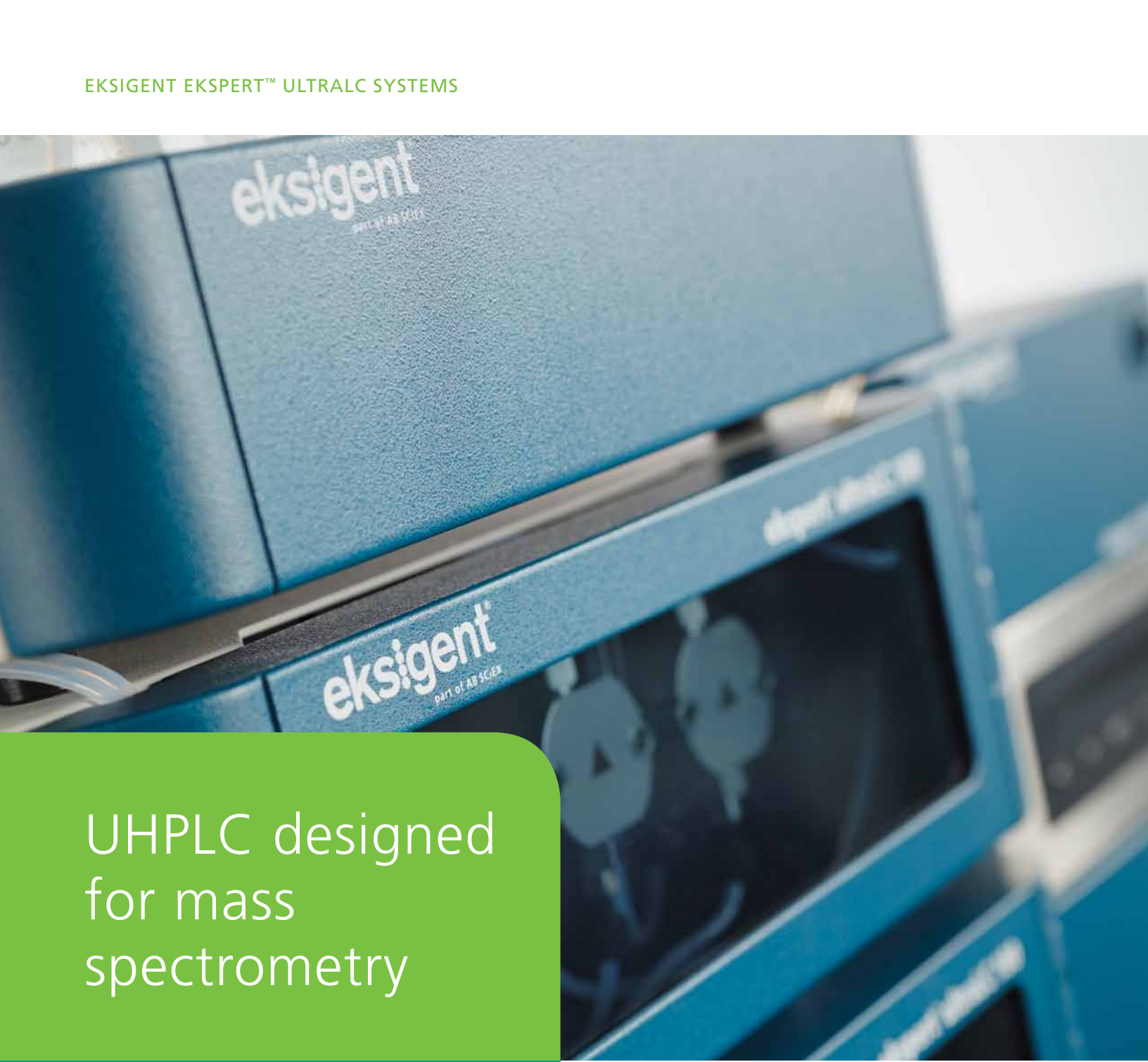


EKSIGENT EKSPERT™ ULTRALC SYSTEMS

A close-up photograph of two blue Eksigent Ultrac LC systems. The top unit is slightly out of focus, while the bottom unit is in sharp focus. Both units feature the 'eksigent part of AB SCIEX' logo. The bottom unit has a small screen displaying a chromatogram with two peaks. The background is a soft, out-of-focus laboratory setting.

## UHPLC designed for mass spectrometry

EKSIGENT EKSPERT™ ULTRALC SYSTEMS

## Focused Expertise

Eksigent ekspert™ UHPLC systems bring a new level of performance and versatility to LC/MS/MS. Designed specifically for use with AB SCIEX mass spectrometers, ekspert™ UHPLC systems provide class-leading UHPLC performance in an easy-to-use solution that you can count on.

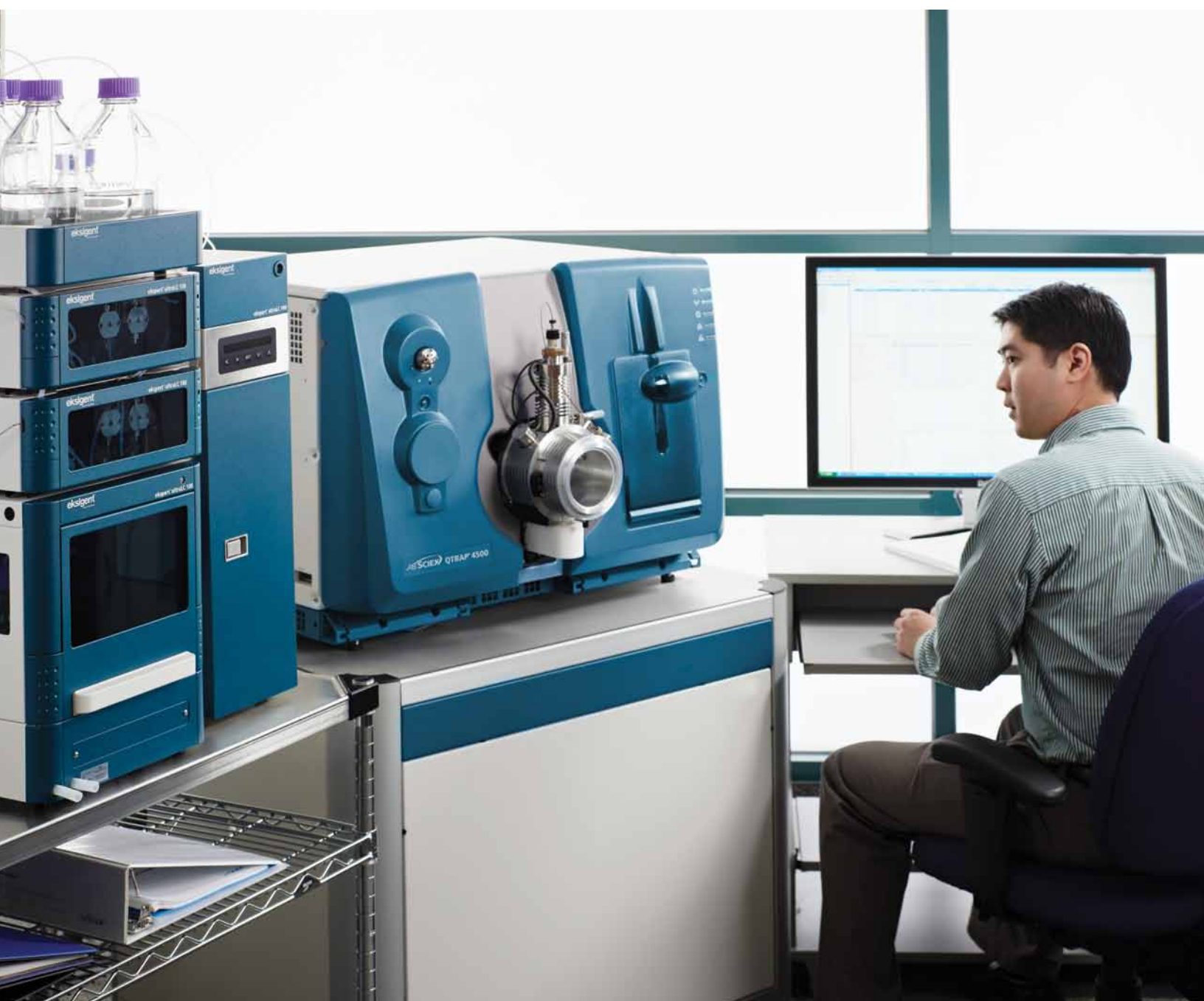
Operating at the faster flow rates favored by high-throughput commercial laboratories, and optimized for the Turbo V™ source, the ekspert ultraLC systems are the perfect complement to Eksigent's line of market-leading solutions in micro and nanoflow chromatography.

Whether you work in food safety, forensics, or pharmaceuticals, if you are looking for the best value in UHPLC to support your AB SCIEX mass spectrometry solution, the Eksigent ultraLC systems are an ekspert choice.

# Capture the power of UHPLC for mass spectrometry

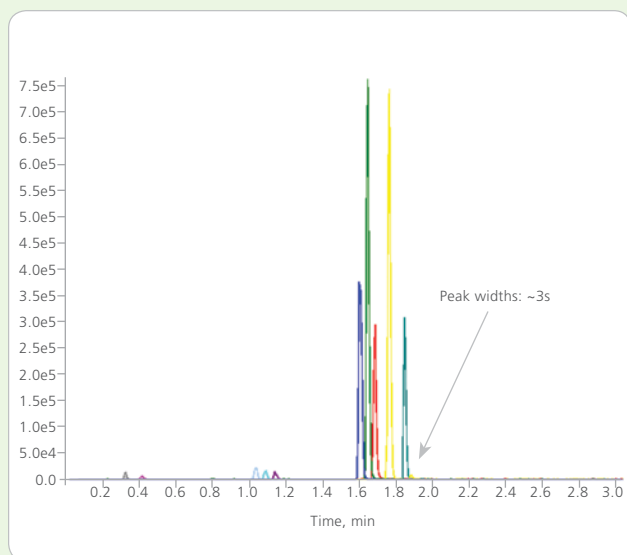
Improve your LC/MS/MS assay with:

- Better resolution – smaller particle sized columns deliver superior separation and tolerate higher flow rates
- Shorter run times – increased separation power enables shorter gradient times
- Higher sensitivity – analyte peaks are more concentrated and give more signal in a mass spectrometer
- Faster method development and cycle times – higher flow rates enable faster re-equilibration and injection cycles



# UHPLC performance, configured specifically for mass spectrometry

If your objective is routine quantitative analysis by UHPLC/MS/MS, you need a front end solution that delivers industry-leading UHPLC performance, and the ekspert™ ultraLC systems are just that. With UHPLC pumps that deliver gradients at the highest back pressures (up to 18,000 psi at flow rates up to 5.0 mL/min) and autosamplers that introduce samples efficiently, while protecting the integrity of your system and prolonging column life, these systems offer superior value for LC/MS/MS applications.



Pain Panel std 2 ng/mL on Phenomenex Kinetix 1.7 $\mu$  2.0 x 50 mm @ 1.2 mL/min



## Which ekspert™ ultraLC is right for your lab?

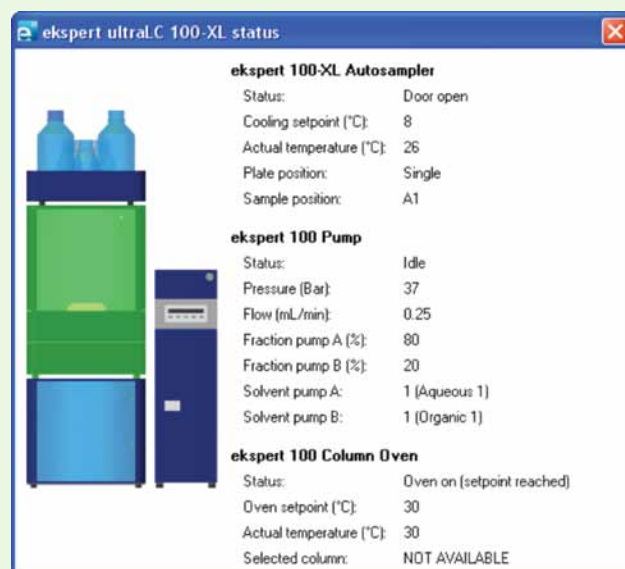
Each ekspert ultraLC system offers:

- Industry-leading maximum pressure delivery – up to 18,000 psi
- Wide flow range – 0.001 to 5 mL/min
- Seamless integration with Analyst™ software and AB SCIEX mass spectrometers
- Real-time monitoring for maximum uptime
- Optional cooled sample compartment
- Optional column management for up to six 30 cm columns with automatic switching

## What's different about the ekspert ultraLC 100-XL Autosampler?

For the highest system performance, the ekspert ultraLC 100-XL adds:

- A concentric two-needle design for separate septum-puncture and sampling
- Sophisticated needle and injection port washing to minimize carryover, with an option for up to four wash solvents
- A barcode reader option for improved automation and chain of custody record management



Software control panel for ekspert ultraLC 100-XL, as viewed through Analyst™ software.



# You invest in our technology. We invest in your success.

As the world leader in mass spectrometry, AB SCIEX creates solutions that are backed by the industry's most extensive support organization. As part of AB SCIEX, Eksigent ekspert™ UHPLC systems receive that same level of support.

With a network of service professionals, experienced compliance specialists, and over 150 PhD application scientists worldwide, we are dedicated to supporting your technical needs and helping you get the most out of your Eksigent UHPLC systems.

Our service professionals are recognized as the most highly qualified in the industry. They are certified on our instrument platforms through a rigorous 4-step certification program, with re-certification occurring every two years. This award-winning program helps to ensure that you receive the most efficient, highest-quality, and most up-to-date service available. Choose from flexible service plans and a variety of services for the right level of support for your laboratory's needs and budget.

Whether you access our service and support team by phone, email, on-site visits, or through our innovative remote monitoring technology you can be confident that our service and support organization will be there for you.

For more information, visit [www.eksigent.com](http://www.eksigent.com)

**For Research Use Only. Not for use in diagnostic procedures.**

©2012 Eksigent Technologies. All rights reserved. Information subject to change without notice. Eksigent is a registered trademark of Eksigent Technologies. NanoLC, CHiPL, and MicroFlow are trademarks of Eksigent Technologies. All other trademarks are property of their respective owners. Patents pending worldwide.

4570812-01 02/2012



**Headquarters**  
5875 Arnold Road | Dublin, California 94568  
Phone 925-560-2600 | Fax 925-560-2700  
[www.eksigent.com](http://www.eksigent.com)