

## AX Steam Generator

### Printed Circuit Assembly Replacement Instructions

#### CAUTION: DANGEROUS VOLTAGE PRESENT!

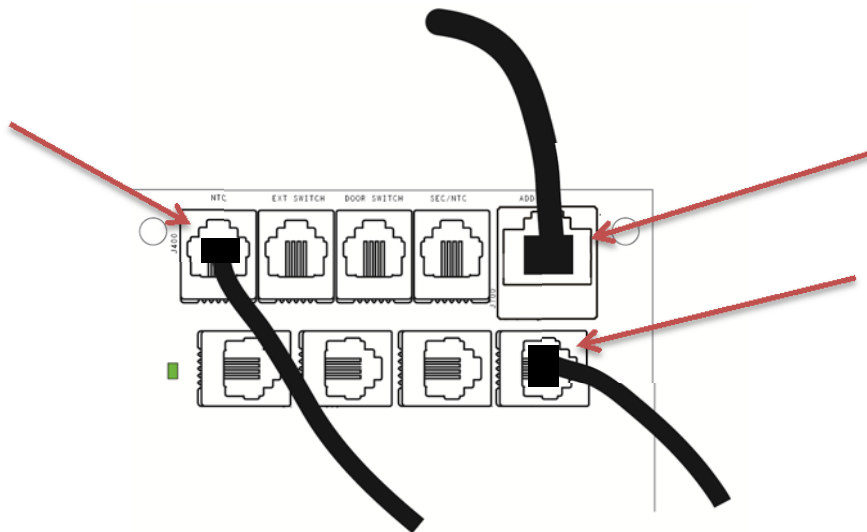
Before proceeding shut off all incoming power at the breaker(s), fuse box or power disconnect! *Simply turning steamer off will not be sufficient.*

**CAUTION:** More than one power circuit may be supplied to steamer. Disconnect all power before servicing steamer!

These simple steps will help make replacing the Printed Circuit Assembly (PCA) a quick, safe and successful task.

#### Power and Level Pca Removal

1. Turn steamer power off at breaker, fuse or power disconnects.
2. Remove outside cover from steamer.
3. Remove all temperature sensor and control cables from the PCA.

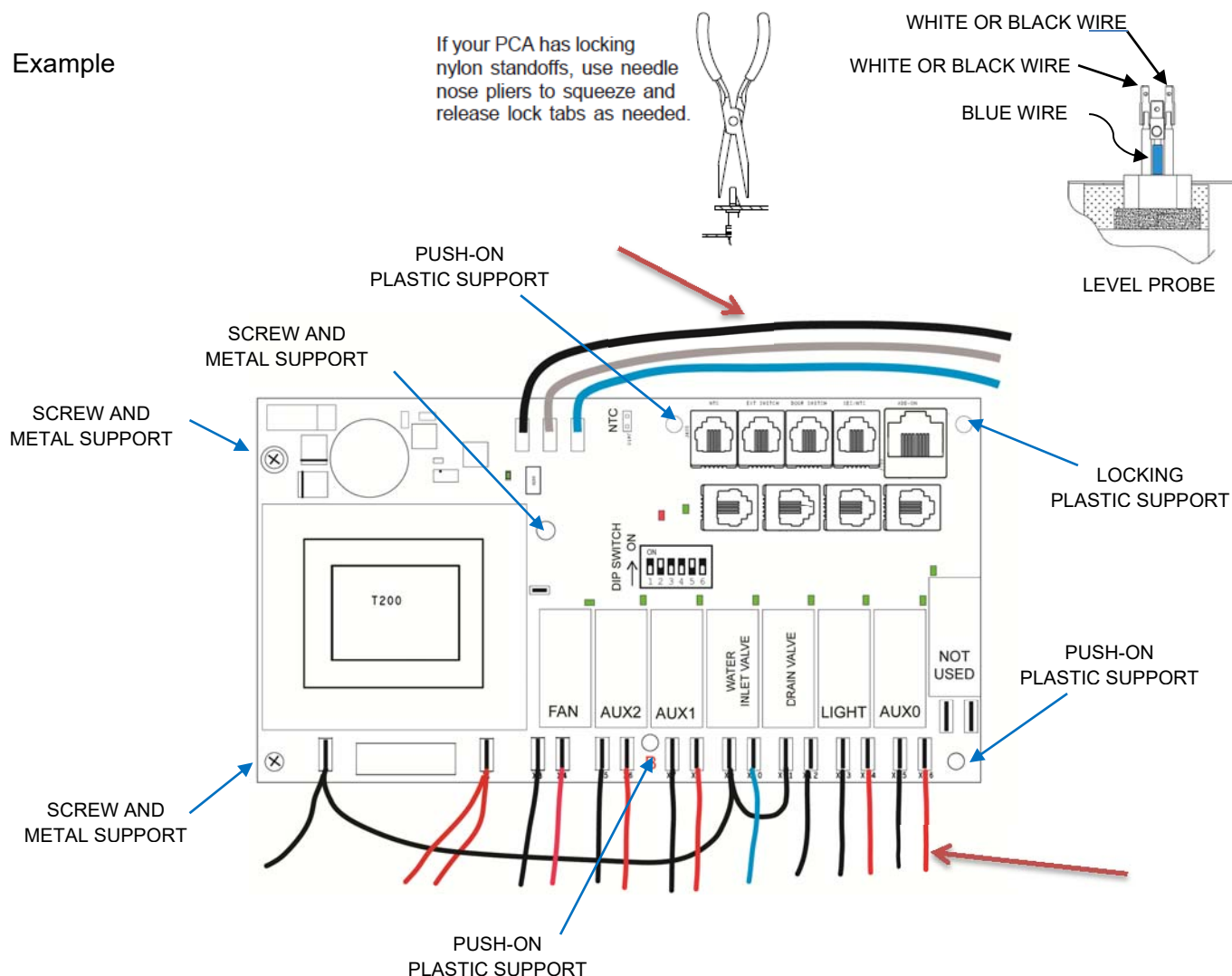


4. Remove all remaining wires from PCA. → →
5. Remove the screws that hold the PCA in position and lift the PCA at each plastic stand-off to remove the board from the generator.
6. Install your new PCA by pushing it down onto the plastic stand-offs, then fasten it in place with the screws that were holding the old PCA down.
7. Once the PCA is firmly in place, follow the wiring diagram provided to re-attach all wires and cables. Note: when replacing the wires on the water level probe, the blue wire must go onto the shortest of the three posts, the two other (black & white) probe wires attach to the two higher posts.

**IMPORTANT: MAKE SURE ALL WIRE CONNECTIONS ARE TIGHT.**

8. Check system configuration dip switch settings on the new PCA to make sure they are set the same as the old PCA.

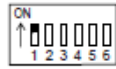
Example



**SYSTEM CONFIGURATION**

Before turning on line voltage to the steamer, make sure the steamer's circuit board's switch is set correctly for the installation.

**Switch 1:** Is this a single steamer installation or 2 or 3 steamers ganged together?

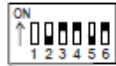


Primary unit in ganged system



Secondary unit in ganged system

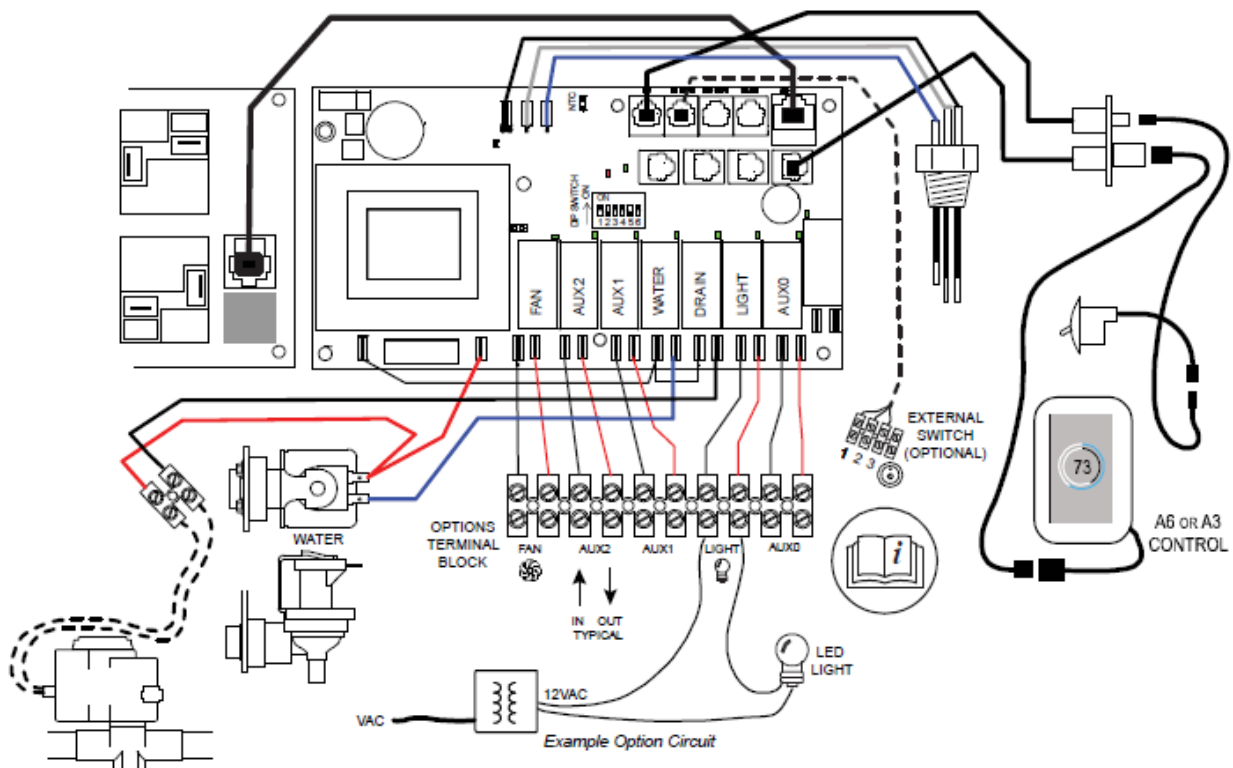
**Switches 2-6:** Is there an electronic Autodrain valve installed?



Autodrain is installed



Autodrain is not installed  
(Requires manually draining and cleaning the tank periodically.)



Please contact Steam Technical Support with any further questions or concerns.

Technical Service Hours

Monday thru Friday

7:00am - 5:00pm Pacific Standard Time (USA)

1-800-363-0251

support@amerec.com