

Amerec's A6 control for the AX steamer is a touch screen control intended to be mounted on a wall, generally in or near the steam bath. It may be mounted directly on the wall surface or, using an optional recessed mounting box, it may be mounted so its touch screen is almost flush with the wall surface.

Using the A6, you set or adjust the steam bath time and temperature, control options such as lights and fragrance pumps, and use Warm Start (if installed) to keep the steamer's water hot between baths so it produces steam more quickly when the bath is started. Delayed start and calendar start settings allow you to have a steam bath ready to use in a few hours or on a regular schedule. Favorites save your preferred settings for later use. WiFi apps give you wireless control from your Android phone and iPhone or while using a PC. You can even prevent the steam room from being used during certain time periods.

Intelligent steam control learns how long it should take your room to reach a comfortable steam bath temperature then adds this time to your delayed starts so you set when you want to start your steam bath and the bath will be up to temperature and ready when you are.

You may use 1 to 3 controls with an AX steamer, including 1 or 2 A6 controls + an A3.

To reduce the risk of damage to the steamer or controls and to ensure the controls connect properly with the steamer, always turn power off to the steamer before connecting or disconnect a control.



Index

Section	Page
Navigation	2
Turning Things On and Off	2
Start Up	3
Initial Set Up – Tools Menus	4
General	4
Limits	5
Additional Settings	5
System	5
Options	6
Favorites	7
WiFi	8
Apps	8
Available Languages in the A6	9
Warm Start: Is It Installed?	9
Mounting the Control	10
Recessed Mounting Template	11

For further assistance, contact

amerec

P.O. Box 2258, Woodinville, WA 98072

Phone 1-800-363-0251

1-425-951-1120

Fax 1-425-951-1130

eMail Support@amerec.com

Navigating the A6

Some indicators are used while navigating and setting the control. These are blue when their screen or menus are in view, gray when they are not in use.



The **Home** button: touch this to return to the main screen. Here you will see the current temperature in the steam room, the bath temperature setting, the remaining bath time (if any) and the time of day. Touch the screen to show the bath and Warm Start on/off buttons, too.



The **Settings** button: touch this to display the Settings screen. Here you can adjust the temperature and duration for the current bath. You can also manually turn on the installed options when the bath is on (and turn on some options, such as Lights, when the bath is off). You can also save your settings as a favorite so you can always have them available for your steam bath without having to change settings after someone else has a steam bath.



The **Favorites** button: Here you can select a bath with your favorite settings, once you've saved it.



The **Calendar** button: Here you schedule a steam bath to start and run at a later time. You can select by the day of the week or using a calendar month and select for one time bath or recurring.



The **Tool** button: here you make the many selections for what functions and options are available to be used, set a PIN to limit who can change settings, and much more.

The **Change Menu** arrows are used to move between related menu screens. Press < to return to the previous screen or > to continue to the next one.

Turning Things On and Off

The Bath On/Off indicator bar shows at the top of the home screen. Note: *if it isn't visible, simply touch the screen to see it again.* Touch the right side to turn the bath on, the center to start Warm Start (if installed) and the left to turn the bath or Warm Start off.



Bath Off

Bath On



Bath and Warm Start Off

Bath On



Bath Off, Warm Start ON



OFF

The slider switches are moved to turn something on or off.



ON

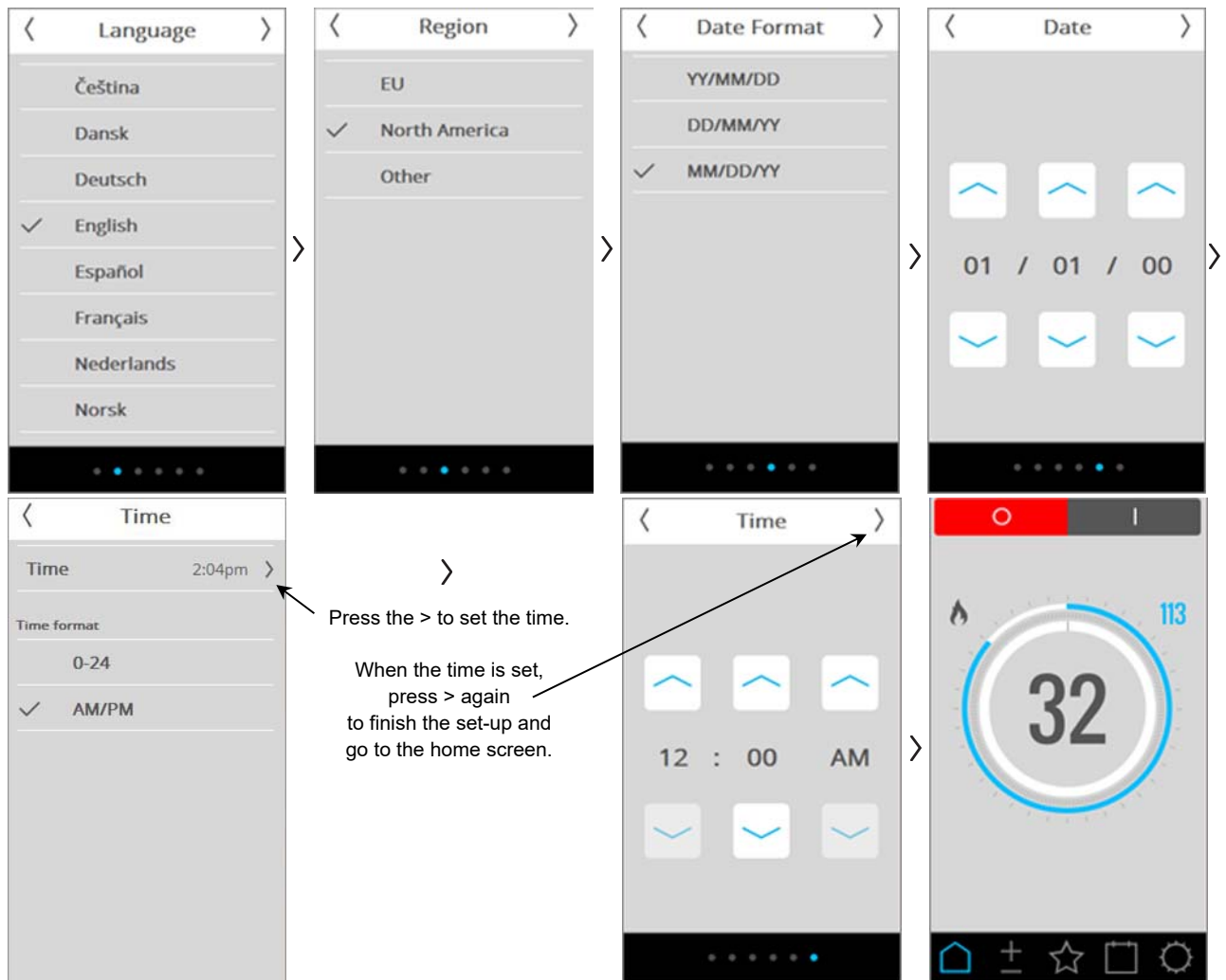
The Cancel and Accept buttons are used after making some changes. Press ✓ to accept your changes, press ✕ to cancel any changes.

Start Up

The first time your A6 is turned on, it will need some information loaded and some settings changed.

When the power is first turned on, the steamer will take about 30 seconds to start operating before the A6 is turned on. The A6 screen will then light and display the amerec logo, then change to a lit screen with spinning circle showing while it loads its own software. This will take 1-1/2 minutes with one steamer and one A6. Multiple steamers or multiple controls can make everything take a little longer while all the software loads.

The first thing you will see is the Welcome screen. Now press the Change Menu button to move to the Language selection menu and select your language, then to the Region menu and select North America, then to the Date Format menu, and then set the current date. Next set the Time format, then the current time. Now change menus again and you will see the Home screen. (Note: page 9 for a list of all available languages.)



Note: at this point, the room temperature may not be accurate yet. As the A6 measures the actual temperature, the display will increase until the correct temperature is reached. After this the temperature display will change quickly, as expected.

Initial Set-up

Once you are ready to use your A6, there are a few things you need to set up. You'll want to set the normal bath time, the bath temperature, set the temperature readings for °C or °F, turn a few options on or off, and maybe set an access code. Some functions may have already been set up by the installer, but we will assume only the initial start-up has been done.



First, go to the Tools menu by pressing its button. You will start in the General menus section.



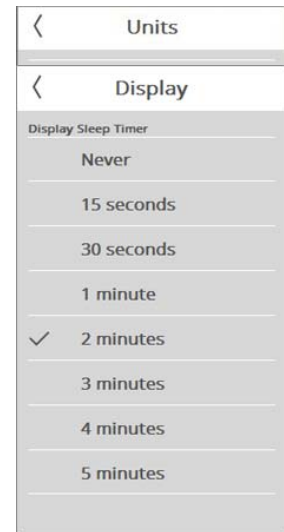
You should have already language, region, set time and date so next choose the temperature **Units** setting by touching its >

Touch to select Celsius (°C) or Fahrenheit (°F) to be used for your temperature displays then press the < button to return to the Tools menu.

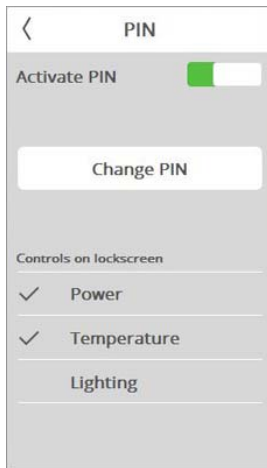
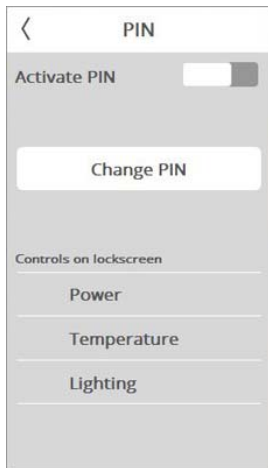
Next set the **Display** time out delay. This setting determines how long the control's display is lit before blacking out. The Display time is set to minutes by default.

Select the time you want the use < to return to the Tools menu.

Do you want to use a **PIN** code to prevent others from changing (or seeing) some of the control's functions? If not, skip to the next setting.



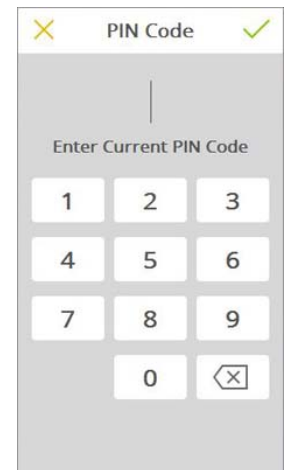
To create a PIN number, select PIN. Touch the Activate slider to turn the PIN on and choose which functions you would like to have available to anyone without using the PIN code. In the settings below, anyone can start or stop the bath and adjust the room temperature but they cannot control the room light or make any other changes.



You may have other options available on the PIN screen depending on how your system is set up and which options are installed.

Now select Change PIN to go to the PIN screen (at right). Enter the current code (0000 by default). Then select ✓ to accept the entry.

Next, you'll enter the new code, select ✓, then reenter the new code and press ✓ again and you will see a note that the new code is accepted before you return to the previous screen



If you change your mind or want to cancel the new PIN code before accepting it, press X

Next we'll set some system limits.

Now use < to return to the Tool menu screen, then slide your finger down the screen to scroll further down to the Limits section.



Limits menus

To set the maximum allowed bath temperature, select **Bath temperature**. This lets you limit the temperature anyone can set the bath to (no more than 125°F by default). For instance, if you have someone in the family who is sensitive to heat, you may set the limit to 115°F so they cannot accidentally set the bath too hot. They can still adjust the bath temperature, just with a lower maximum setting.

If you want to prevent the steam bath from being used during certain hours, say during the day while you're not at home or from 10:00 pm to 7:00 am for a hotel's quiet time, use the **Not allowed start** setting to set the time period.

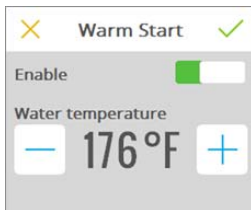
If you have water problems which might prevent you from having water available for the steamer, set the **Max water fill time** to a reasonable time limit. If water pressure is too low, you may need a longer time. If your water supply is normally good, you may be able to set it to 2 or 3 minutes. Default is 6 minutes.

If it takes longer than the fill time setting to reach normal operating levels in the steam, the system will show you an error and shut down to prevent damage to the steamer. And remember, you must have at least 20 psi (138 kPa) water pressure for proper operation.

Additional settings menus

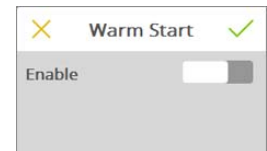
Warm Start is an option which keeps the water in the steam tank warm so the steamer produces steam more quickly after the bath is turned on. If you do not have Warm Start installed, select warm start and move the slider to disable it.

Warm Start On

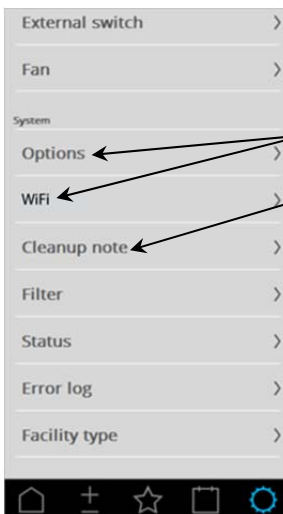
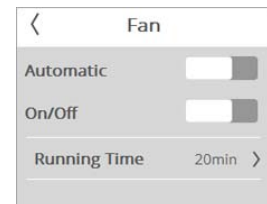


If Warm Start is installed, you may adjust the temperature up from the 176°F default to speed up steam production even more. If you do turn up the Warm Start temperature, watch for steam from the steam outlet while the bath is off. If you see steam while only Warm Start is running, turn down the temperature a few degrees and repeat until the steaming stops.

Warm Start Off



If you have a vent fan connected to the steamer's FAN option terminal block, select **Fan** to set up how it will operate. Turn on Automatic to have the fan run after the bath. The fan will run 20 minutes by default but may be set from 1 minute to 3 hours by changing the Running Time setting. The fan may also be turned on or off manually while in this menu.



Next scroll down further for the System menu section.

System menus

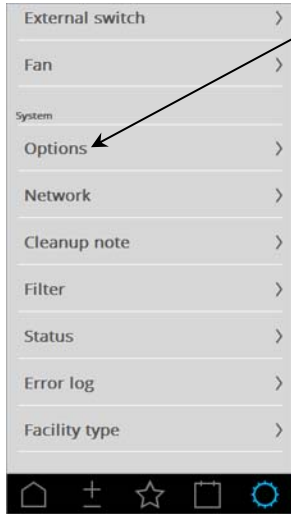
Options and WiFi will be covered in their own sections.

Use the **Cleanup note** settings to turn on/off a reminder which tells you when it is time to clean the tanks, such as for decalcification when you have hard water. You can also set the number of operating hours before the reminder appears.

In this menu, you also can choose to see reminders that the tank should be emptied after a bath. If you do not have an automatic electronic drain valve, you should drain the tank periodically to keep it clean. How often depends on you water quality. If you cannot get to your steamer's manual drain valve easily, we recommended turning off the Tank Empty Notes so you don't see the reminders.

The rest of this menu is for service use and should be left as is.

Options



Go to **Options** to set up various options available for use with you steamer.

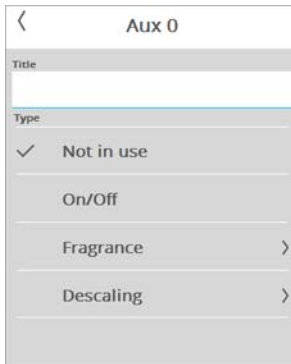
Your AX steamer comes with two options automatically loaded: a room light which always light during the steam bath and remains on for 10 minutes after the bath stops (or can be manually turned on and off) and a dedicated fan control (set-up previously in the Systems menus).

You also have connections for three additional options of your choice, **AUX 0**, **AUX 1** and **AUX 2**. These options use a relay in the steamer as a switch connected to the Options terminal block.

To add an option, select Options then select one of the Aux items. Below, we'll set Aux 0 for controlling Chromatherapy lights.



In Aux 0's menu, select the blank white block so you can name your option and the keyboard will appear. Enter the name for your option then press the ✓ to accept the name. The name can have up to 15 characters maximum (longer names may not display properly).

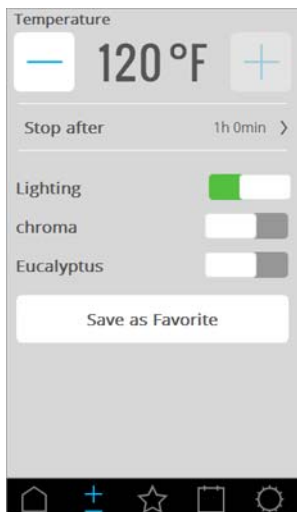


Now select On/Off for the operation needed then return to the options menu.

A Fragrance option may be connected to inject aromatic oils into the steam bath. If you wish to connect a Fragrance system, set an AUX to Fragrance and name the option.

If you need to set the pump timing for more or less fragrance, use the fragrance menu to select how long the Pump injects the aroma oil and how long the pump Stops between injections. Start

with the default settings and adjust for more or less fragrance as you get use to the effects. You do not want too much fragrance, so start with a little and work your way up as needed



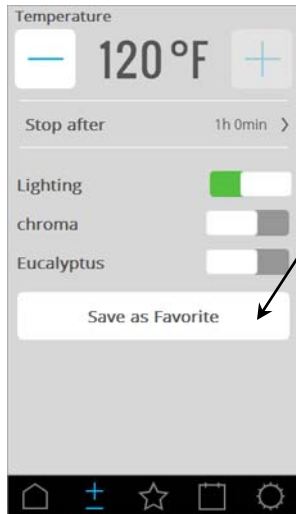
Now go to the Settings screen and you'll see the options added to the screen. When you start a bath, Lighting will automatically turn on but the options will remain off until you turn them on manually.

When the bath turns off, the options will be turned off automatically, too.




Favorites


When you finish your steam bath, the bath settings will be saved for the next bath automatically. If the next user makes changes, the following bath will use the new settings.



You can save your bath settings as a favorite so you can always have the settings you want. This will save the bath temperature and time and the options you want turned on for you bath. The A6 will let you save a total of eight favorites


When you have your bath set up the way you like it, go to the Settings  screen then select **Save as favorite**.

Now you will go to the Keyboard where you can type in the name of your favorite set up. The name can have up to 15 characters maximum (longer names may not display properly). Select ✓ when done and you will be returned to the Settings screen.

To use your saved favorite, go to the **Favorites** screen. 

You will see list of all the saved favorites settings. Select your favorite and the Settings screen will appear with all your favorite's settings in place. Make any changes you may want, then select Start to begin your bath.

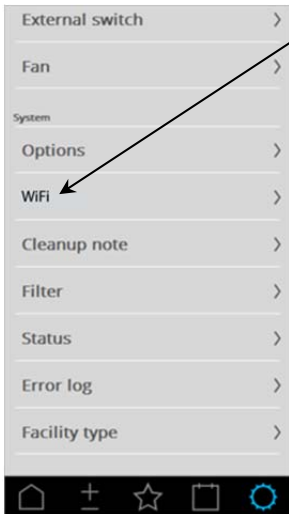


If you decide to delete a favorite, go to the Favorites  screen and select that entry. When it returns you to the Settings screen, there will be a small trashcan in the upper right corner.

Select the trashcan to delete that favorite. You will be asked to accept deleting that favorite, then you will be returned to the Favorites screen.



WiFi



If you plan on using an app with your steam system, you will need to enable the WiFi connection first. Select **WiFi** on the Systems menu to go to the WiFi menus.

Use the slider switch to Enable WiFi.

Next select Network.

Now set the slider switch to Auto connect.

Next select Scan. A list of available WiFi networks should appear. Select your network and on the next screen, select and enter your password for the WiFi network. Select ✓ to accept the password and return to the network screen.

Now select Connect. A couple messages will appear showing that the connection is being made and has been accepted. Press OK to clear the messages.

Now return to the network scan screen and enter a name for you bath system: you will use this to help connect with your app(s). Select the blank white block then use the keyboard to enter the name (15 characters maximum (longer names may not display properly)) then use ✓ to accept the name and return < to the previous screen.

Make sure the Auto connect switch is still enabled (green) then return to the previous screen and make sure WiFi is still enabled. Note: in this screen you can check to see all of the apps and A6 controls which are connected to your system.

Now return to Tools then Home.

APPs

The AmerecConnect app is available free from the iTunes Store for iPhones and iPads and from Google Play for Android phones. An app is also available for PC computers (*contact Support to obtain the PC app*). Apps are not yet available for Windows phones or Macintosh computers. Android phones must be version 4.0 or higher.

The apps look and operate identically to the A6 control.

To connect an app to the system, it must be connected to the same WiFi network and to the steamer system. You will need to log in to the WiFi network first. Then, in the app, go to Tools then Network then set Auto connect on (green). Select Find System. Your steam bath system name should be listed. Next select your system then select Connect. Select Change PIN and enter the PIN code (0000 by default or the number your changed it to). then enter the PIN code to. Save the PIN code. Now select Connect. A short time later Connect will change to Disconnect, indicating you are connected to the steam system. *If you ever want to disconnect from the system, go here and select Disconnect.*

Return to the Network screen and make sure the auto connect slider switch is on. You should see your system name on the screen with a check mark in front of it. If you ever see the system name in parenthesis, it means you are disconnected.

The apps have fewer Tools available than the A6. There are risks when starting a bath while using a phone: you may not be near enough to know if something has changed at the room, such as the door being left open, so the selections are reduced for safety.

The PC app has many more selections available, assuming that with a PC you are more likely to be near enough to the bath to be aware of changes. This is intended especially for use in light commercial areas, such as a spa.

Available Languages in the A6

Czech
Danish
German
English
Spanish
Dutch
Norwegian
Polish
Portuguese
Russian
Slavic
Finnish
Swedish

< Language

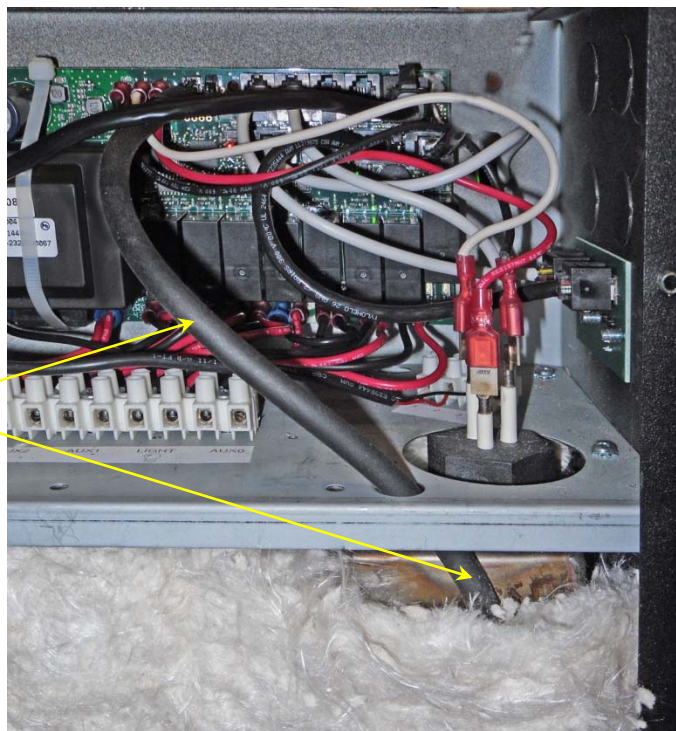
Čeština
Dansk
Deutsch
✓ English
Español
Français
Nederlands
Norsk
Polski
Português
Русский
Slovenský
Suomalainen
Svenska

Warm Start: Is It Installed?

If you enable Warm Start on the A6 and you get a steam tank temperature error when you try to turn on Warm Start for the first time (see **Turning Things On and Off** on page 2), you'll need to remove the cover from your steamer and see if the Warm Start option is installed.

If warm start is installed, you'll see a temperature sensor on the side of the steam tank which connects through a tube to the steamer's circuit board.

If Warm Start is installed and you still get a sensor error, first make sure the sensor is connected to both pins on the steamer board (between the cable jacks and the level probe wires). *If it is connected, contact Support for further assistance.*



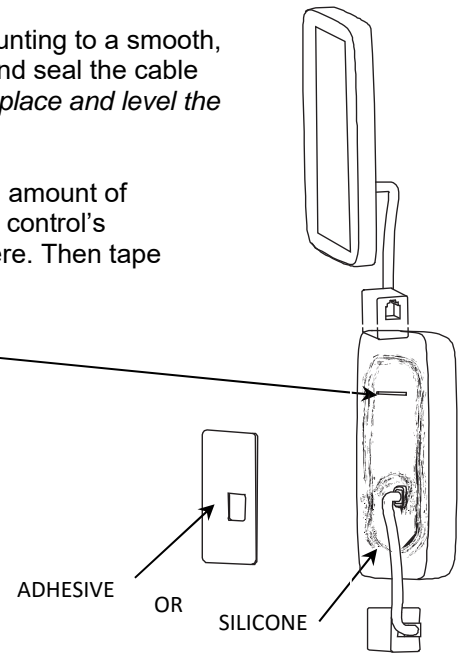
Mounting the Control

Surface mount the A6 control inside or outside the steam room. If mounting to a smooth, flat wall, the adhesive pad provided will work well to mount the control and seal the cable hole. *The adhesive will stick to the wall quickly so be sure to accurately place and level the control before attaching it to the wall!*

If the surface is uneven or has grout lines, we recommend using a small amount of silicone to mount the A6 control. If using silicone, run a bead around the control's cable end and another bead around the back of the control as shown here. Then tape in place on the wall until the silicone has set up.

Note: A cut mark on the back indicates the top of the control
The control's cable end is at the bottom of the control.

Be sure to carefully level the control while mounting!



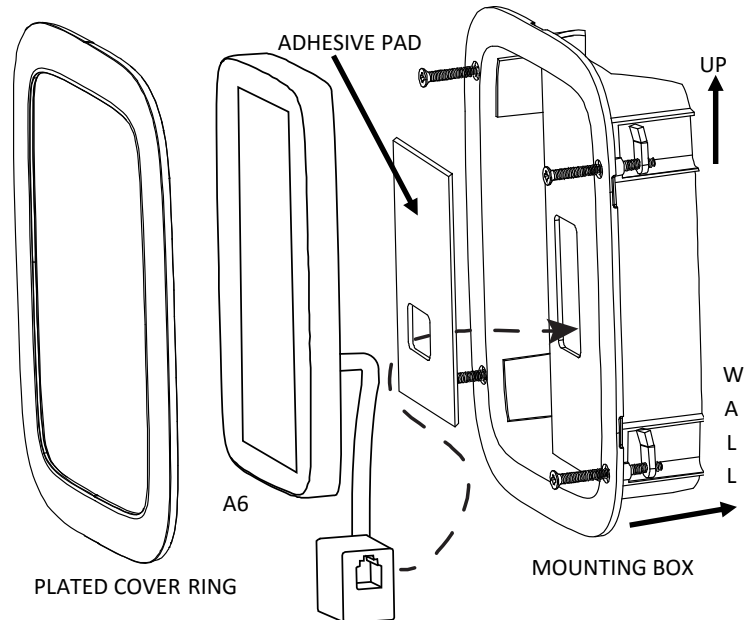
Recessed Mounting

The recessed mounting box allows the A6 to mount with its surface almost even to the wall surface.

You'll need to cut a hole in the wall to match the back of the mounting box and run the control cable out of the wall through the hole in the mounting box. Make sure the hole is just big enough to mount the box – *you need room to add silicone to seal the box to the wall.*

Next run a bead of silicone around the back of the box's front lip, then press the box into the hole and turn the mounting screws to pull the tab tight against the inside of the wall. *Make sure the box is level and the correct end is UP (there is an arrow on the wall side of the box pointing up).*

When the box is ready, run the A6's cable end through the cut-out in the adhesive and attach the adhesive pad to the back of the A6. Be careful – *the adhesive will stick quickly.*

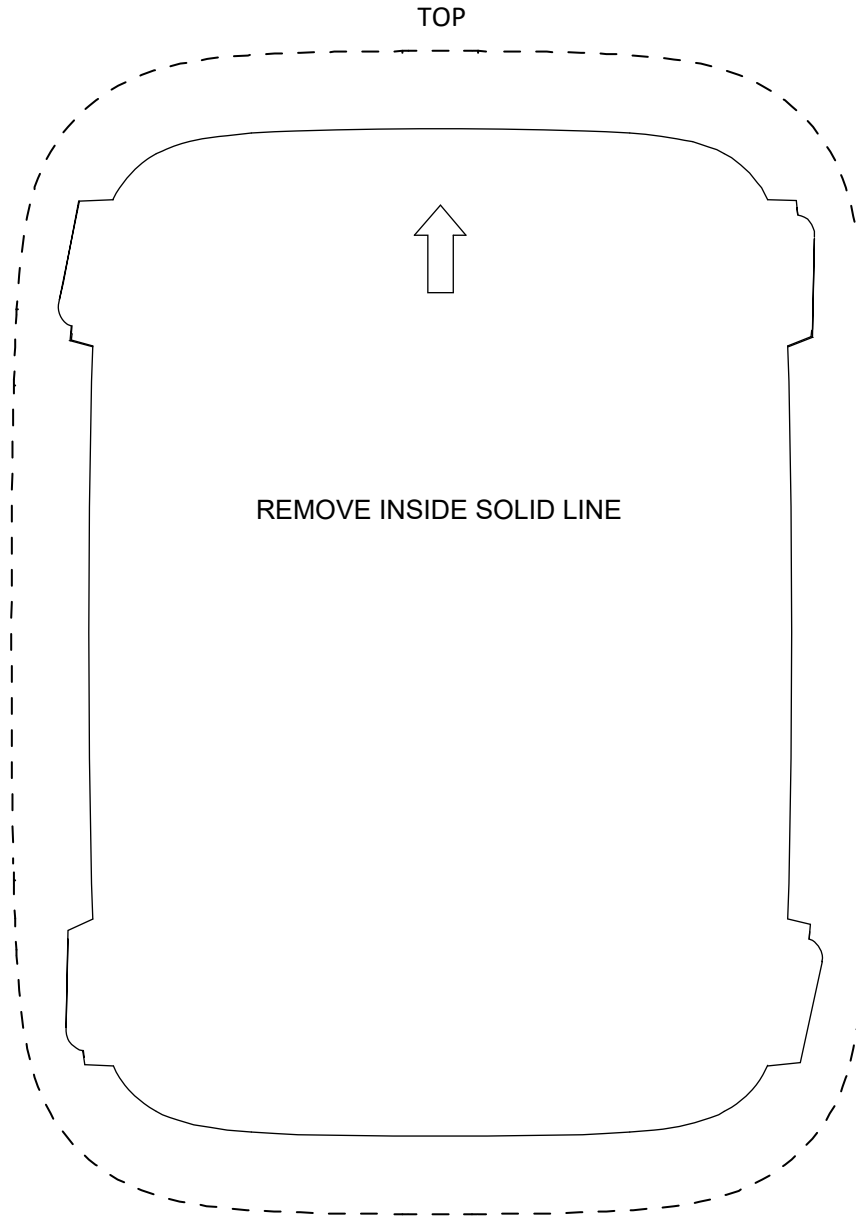


Now connect the A6 cable end to the control cable then feed the cables and connector through the hole in the box and into the wall. *Now test the A6 before mounting it into the wall! Once mounted, the A6 will be hard to remove!*

When ready, peel the cover off the back of the adhesive and carefully push the control into the box and hold in place for about 30 seconds to finish mounting the control. Press the trim ring on to the front of the box and control. Snap it in, place top and bottom and along both sides.

Recessed Mounting Box Template

Print this page full size. Do not scale to fit page!



DASHED LINE IS OUTLINE OF HOUSING LIP
FROM ROOM SIDE – SHOWN FOR REFERENCE ONLY!