

Thank you for choosing Vaporesso Products!

Polar is the perfect match of brains and looks, packing in a beautiful 2 inch color screen, an elegant prismatic appearance along with the featured Cascade Baby SE Sub-Ohm Tank.

0.001s Firing Speed brings you the most rapid and safe heating and the purest rich flavor from the first puff to the last!

The upgraded **OMNI Board 4.0** integrates Insta-Fire, Super Player Mode and multiple protections. **2.5A** quick charge can halve your charging time.

Polar is optimized for users looking for some serious power output with minimal fire delay. Experience instant vaping with Polar!

Please read this manual carefully to ensure proper use. For additional information or questions regarding to this product or its use, please visit www.vaporesso.com

MAIN FEATURES

- With the most rapid, stable yet safe firing rate of **0.001s**, Insta-fire quick heating system brings you rich flavor and denser clouds from the very first puff.
- Upgraded **OMNI BOARD 4.0**
Additional **Super Player Mode (0.03-5Ω)** which is adaptive to all Mainstream RDA Tanks.
- With a 2" TFT color screen, giving the eyes a true visual experience.
- Revolutionary triangular air flow producing a smoother, denser cloud.
- Unique Isolation Structure, allowing consistent, intense flavors with every puff.
- **Child-Proof Lock Mechanism**, effectively avoid accidentally opening top cap and leaking e-juice.

SPECIFICATIONS

Dimension: 45x28x144mm

Display: 2" TFT Color Screen

Batteries: 2 x 18650 (Not Included)

Power Range: 5-220W

Voltage Range: up to 9V

Resistant Range: 0.03-5Ω(Super Player Mode Only)

POLAR

with Cascade Baby SE



HOW TO USE

1. Switching On/Off

Press the fire button 5 times in quick succession within 2 seconds to turn the device on. Using the same way, the device can be powered off after 5 presses.

2. Vaping

Hold the fire button and inhale through the mouthpiece. Release the fire button and exhale.

3. Screen Display

Being switched on, the Color Screen displays voltage resistance, battery level, temperature, output wattage etc. The display will change to Real Time Clock after 10 seconds if unused and the Real Time Clock will be shut off after 15 minutes if unused. Press "+" or "-" or Mode button once and the screen will be lit with Real Time Clock display, press button again and the screen will be lit with main menu. Press the fire button at any time, the screen will be lit with main menu.

4. Adjustment Buttons Lock/Unlock

Pressing mode and "+" button simultaneously for two seconds when the device is powered on, then the up and down buttons will be locked and the screen will display "SYSTEM LOCKED". In the same way, pressing the "+" and mode button can be unlocked and the screen will display "SYSTEM UNLOCKED".

5.Smart ON/OFF Setting

"When you turn on the smart function, it can change intensity according to the coils resistance levels within a safe limit in VW-H/N/S mode."

How to operate: System Menu > SET > SMART ON/OFF

6.Auto ON/OFF

The Auto function taking away any operation difficulties switching between VW-H and VW-N or between VT-H and VT-N.

How to operate: System Menu > SET > AUTO ON/OFF

7. Switch Vaping Modes

Long press the mode button for three seconds to switch among : Smart VW(H/N/S) / VT(SS, Ni, Ti) / TCR(M1, M2) / BYPASS / CCT / CCW / VV / CCV / Super Player (0.03-5Ω). Common mode introduction is in below:

1) Smart VW Mode

As an advanced Variable Wattage mode, there are 3 levels of VW: H stands for High; N stands for Normal; S stands for Soft. The default setting is Normal. VW(H/N/S) will guarantee your mod's ability to skillfully select the adequate average wattage for your atomizer, according to its resistance reading, automatically.

2) BYPASS Mode

Direct output voltage system is applied in Bypass mode. The higher the battery level is, the higher the output voltage is. When set in this mode, the device can support a coil whose resistance is within the range of 0.05-5ohm.

3) SUPER PLAYER Mode (Additional)

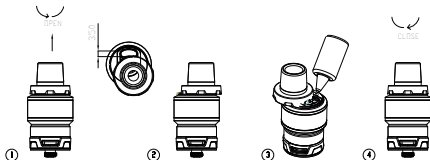
Adaptive to all Mainstream RDA Tanks

8. Adjustment of Air Flow

The bottom airflow system can be adjusted by twisting the airflow ring.

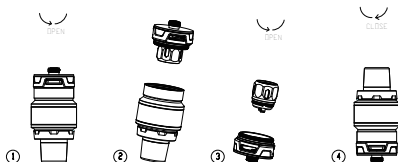
9. Filling E-liquid

Lift and twist the top lid counter clockwise to the fullest extent. Add your favorite E-juice through the opening and slide the lid back. Allowing the safety locking mechanism to secure the lid.



10. Changing Atomizer

Remove base to unscrew the GT meshed coil and insert the new one. Secure the base back onto the device. There are a variety of GT coils available for Cascade Tank series. Please select the coil you desire.



11. Charging

The Polar uses the Quick Charge and equalizing charge system. Simply plug in the USB cable to charge the battery, the color screen will display the current battery status.

BATTERY PROTECTION

If you vape for more than 10 seconds without stopping, it will shut itself down for your safety. OMNI Board also contains a lot of protections: Short Circuit Protection / Low Voltage Protection / Overcharge Protection / No Load Protection etc.

WARNING:

When inserting the batteries into the new mod, remember to make sure they are new, and that they are one of a pair. Unevenly charged batteries, used batteries, or non-matching batteries may cause significant delays in charging and affect the performance of the device.

CAUTION

1. It is intended for usage by people over 18, NOT by non-smokers, children, pregnant or breastfeeding women, people with or at risk of heart disease, or people taking medication for depression or asthma. The electronic cigarette is not a smoking cessation device.
2. Please keep this unit out of reach of children or pets;
3. Please don't drop, throw or abuse your Mod, it may cause damage.
4. Do not place it in extremely temperatures;
5. Do not try to disassemble the battery.

Battery using:

1. Please use correct charging equipment by reputable suppliers.
2. Please choose good batteries from reputable companies.
3. Please put the batteries on a hard surface when charging.
4. Please turn off the device when it is not in use.
5. Please use dry cloth to clean the battery and its terminals when needed.
6. Don't use batteries with torn casings.
7. Don't leave the charging batteries unattended.
8. Don't expose the battery to extreme heat, cold or direct sunlight.
9. Keep away from water or any liquids.

Precautions:

1. Don't use the device in stormy weather or dust condition.
2. Connect the USB port and charger properly. Unplug the charger when the charging is completed.
3. Don't put the device in your pocket or handbag directly; don't mix it with coins, jewelry or other hard objects.
4. The charger and battery may heat when charging, keep away from flammable gas, liquid or other materials.

This refillable electronic cigarette is intended for use with compatible liquid, which may contain nicotine. Nicotine is an addictive substance and its use is not recommended for use by the following:

- Non smokers or persons under the legal smoking age
- Pregnant or breastfeeding women
- Persons experiencing heart disease, stomach or duodenal ulcers, liver or kidney problems, long-term throat disease or difficulty breathing due to bronchitis, emphysema or asthma.
- Persons with an overactive thyroid gland or experiencing phaeochromocytoma (a tumour of the adrenal gland that can affect blood pressure)
- Those taking the medications Theophylline, Ropinirole or Clozapone

You may experience the following side effects if you use nicotine containing

e-liquid in combination with this product. If this happens, please consult a

healthcare professional and show them this leaflet if possible:

- Feeling faint / - Nausea /- Dizziness /- Headache /- Coughing
- Chest palpitations/pain or an irregular heart rate /- Irritation of the mouth or throat
- Stomach discomfort /- Hiccups /- Nasal congestion/- Vomition

Designed in California

Manufacturer:Shenzhen Smoore Technology Limited

Add:Building 8,Dongcai Industrial Park,Gushu Town,
Baoan District,Shenzhen, China 518102

Management System of SMOORE factory has been assessed
and registered under the Norm cGMP, ISO13485, ISO9001
and ISO14001.TM and ©2016 Vaporesso All rights reserved

This device should not be used by persons under the age of 18 or non-smokers.