



Opton*Pro*

LASER THERAPY

Therapy at the Speed of Light

Application of high-power light for targeted penetration of energy deep into the target tissue.

Fixed and custom programs, combined with simple operation and the high energy output of the OptonPro enable highly effective treatments.

Indications

- temporary relief of minor muscle and joint aches, pains, and stiffness
- temporary relief of muscle spasm
- temporary relief of minor pain and stiffness associated with arthritis
- promoting relaxation of the muscle tissue
- temporary increase in local blood circulation

Features

- 12" color touch-screen display with intuitive menu
- direct multi-functional parameter access at all times
- security key lock and interlock
- update access and logbook via SD card
- extensive memory options (2 x 120 entries)
- performance test of the laser with integrated power control unit
- aiming beam

Safety

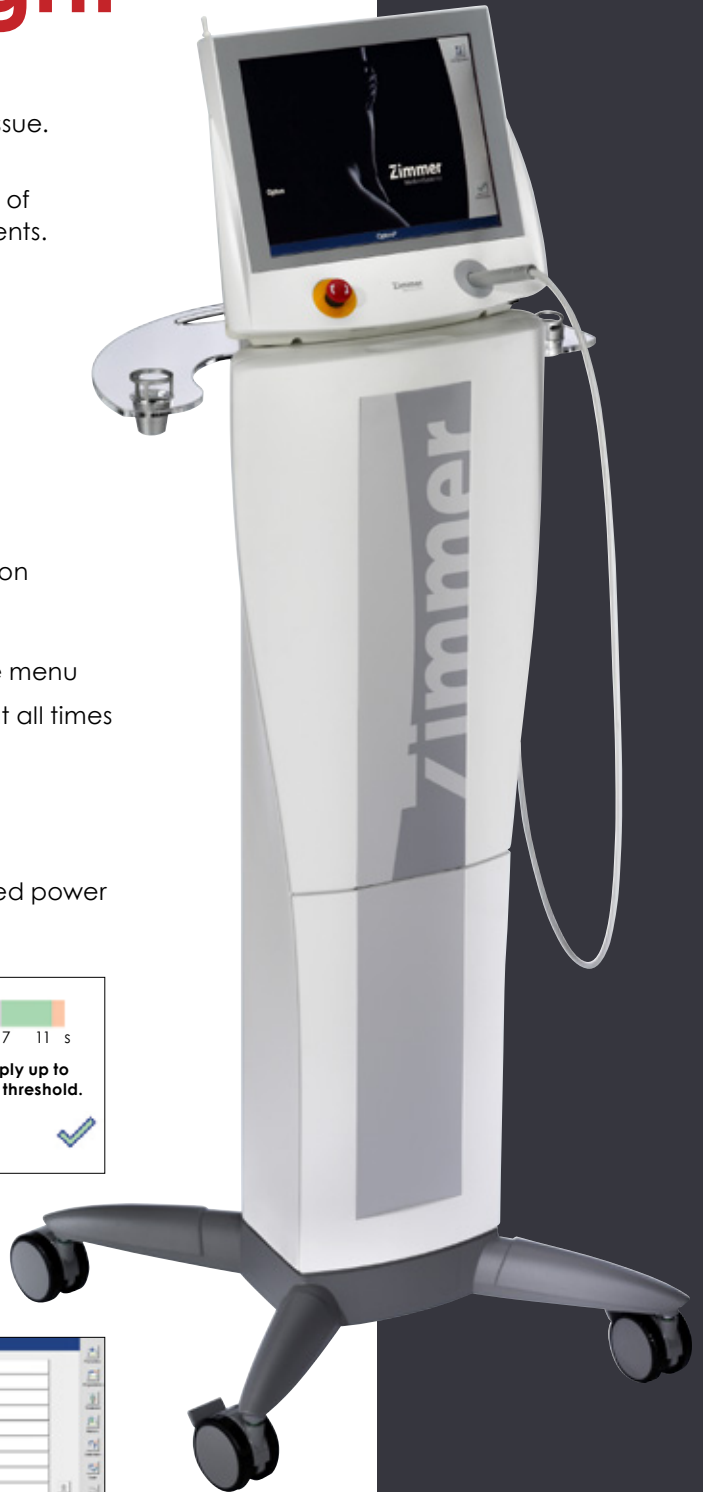
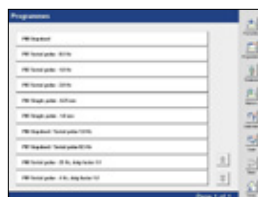
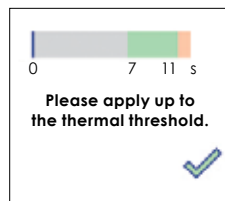
A thermal threshold test offers a tool to assess the warmth sensitivity and feedback options of the patient.

The different operating modes offer safe treatment options.

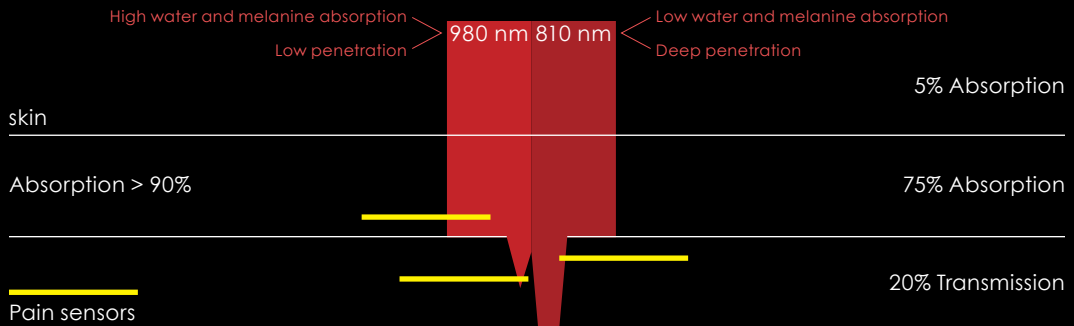
Support

Individual adjustments can be made at any time and saved for easy access.

A favorites menu collects the most common settings and displays them when the OptonPro is started, if required.



OptonPro wavelengths and interactions in the tissues



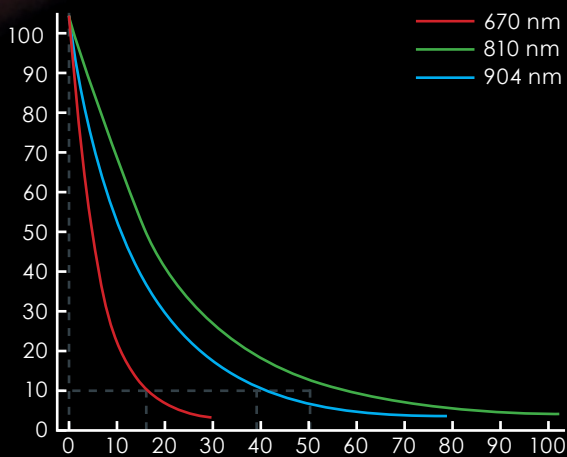
Laser Applicator

A laser applicator with an optical lens expands the laser beam to 43.44° and with direct skin contact provides a treatment area of 0.8 cm².

Spacers

Two magnetically attached spacers for a more comfortable treatment are available.

Depth Lambert-Beer's rule



Laser light, which is monochromatic and coherent, can be precisely adjusted and its behavior precisely defined. Absorption in injured tissue can be calculated precisely depending on the selected frequency, the composition of the tissue, and the selected intensity.

Based on the absorption rate, which can be determined by the Lambert-Beer law, OptonPro uses a system of four laser diodes with wavelengths of 810 nm and 980 nm, the absorption minimal of melanin and hemoglobin, and a maximum radiation intensity of 7000 mW (7 W).

The optimum ratio of absorption and penetration depth guarantees efficient stimulation of tissue and pain receptors.



Technical Data

OptonPro	integrated class IV diode laser with fiber-optic applicator and touch screen user interface safety functions: emergency off switches and operation by foot-switch
Laser Diodes	near infrared range 4 units in parallel operation wavelengths: 2 x 810 nm / 2 x 980 nm
Aiming Beam	650 mm
Emitted Power	max. 7000 mW (7 W) continuous, unpulsed
Output Spot Size of Applicator	0.39" (10 mm)
Operating Modes	continuous wave, serial pulse
Programs	3 fixed programs individually adaptable 120 memory slots for custom programs 120 memory slots for favorites security key lock and interlock energy meter with preset and reminder function thermal threshold and performance test
SD Card	1 GB standard for memory error logbook backup and update
Operating Voltage	100 - 240 V~, 50 Hz / 60 Hz
Power Consumption	max. 200 VA
Protection Class	II
Applied Part	Type BF in accordance with IEC 60601-1
Dimensions (H x W x D)	11.81" x 13.78" x 7.87" (30 cm x 35 cm x 20 cm)
Weight	8.38 lbs (3.8 kg)
Laser Class	4 special regulations to be observed
Standard Accessories	SysCart for OptonPro with storage compartments and glass shelf 2 sets of safety glasses 1 small spacer 1 large spacer



800 874 6251 | sales@dynatronics.com

www.dynatronics.com | 7030 Park Centre Drive Salt Lake City, UT 84121