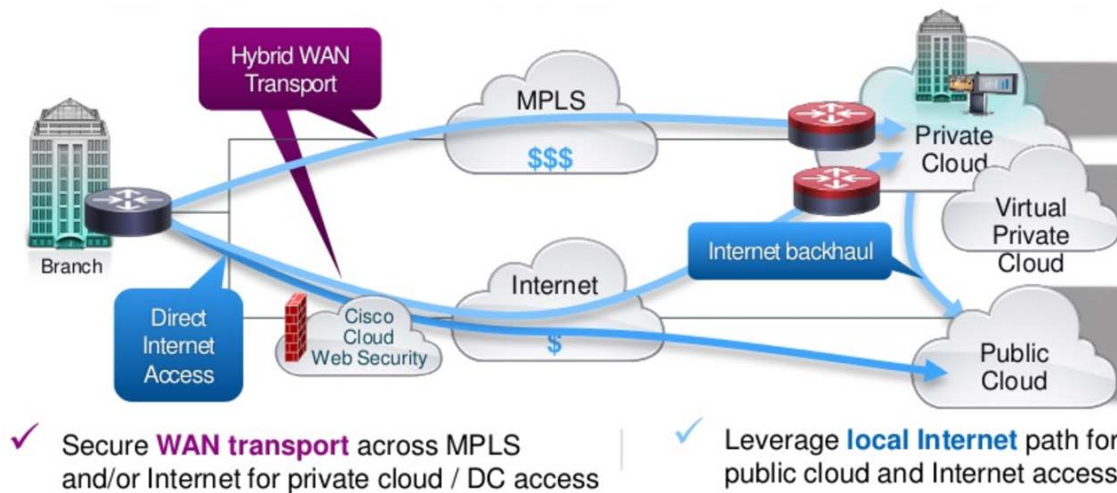


# SD-WAN

## Grow Your WAN Inexpensively, Without Compromise

SD-WAN, or Software Defined Wide Area Network, is an overlay WAN architecture that overcomes the biggest drawbacks of traditional WAN. It establishes a single, seamless connection to any device, site, or location over any transport, providing simplified operations with centralized management, policy control and application visibility of the enterprise. The rise of cloud-based applications and IoT is impacting existing wide area networks across all enterprises. The need to increase bandwidth, optimize cloud connectivity and improve security are difficult to address with traditional WAN. Gartner estimates that "by 2020, more than 50% of WAN edge infrastructure refresh initiatives will be based on SD-WAN versus traditional routers"



## Benefits

### Quick and Easy Deployment

You can fully configure WAN connections, define dynamic policy based service profiles and automatically deploy them on new routers through a centralized interface

### Application Traffic Visibility

Network insight helps ensure high availability and easy troubleshooting

### Secure Connectivity

Best of breed security allows you to provide additional services like guest wi-fi and direct Internet access

### Automation and Simplified Management

Update quality of services and security policies and implement new features quickly without expensive on-site tech visits and tedious command line configuration

### Great User Experience

Deploy new applications in minutes and get faster performance using less bandwidth

### Cost Optimization

Scale and optimize WAN bandwidth using any Internet or cellular connection to cost effectively deliver services across branches without compromising performance, security or reliability.

## Expert Experience

LookingPoint has extensive knowledge of Cloud, WAN, and QOS architecture. We have been deploying traditional infrastructure in this way for years. Now SD-WAN draws from our expert experience, and sets the stage for our solution architects to design and implement your next generation WAN. SD-WAN should be considered if you are migrating to the cloud, looking to simplify your wan, or looking to add both redundancy and leverage that redundancy to give you capacity.

