

Connex™ is Hytrol's line of plastic chain conveyors. The belts are constructed of smaller plastic segments that are linked together to build a strong, durable answer for your material handling needs. They are commonly used in pharmaceutical, food production, packaging or manufacturing industries and offer the versatility of carrying loads of up to 200 pounds per linear foot.

## SHORTER REPAIR TIME & COSTS

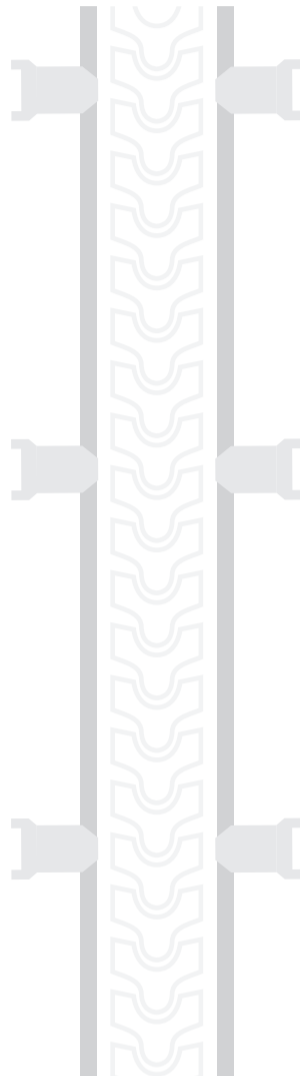
The belt design of interlinking pieces allows only the damaged piece(s) to be replaced, creating a repair time of 10-15 minutes. Since only the broken or damaged segments of the belt are replaced, costs are less than having to replace an entire belt.

## FAST DELIVERY

Like all Hytrol products, Connex has an extremely fast production schedule. Most standard stock conveyors ship in three days, while custom orders ship in four to six weeks.

## EASY INSTALLATION

Connex systems are assembled and tested before shipping. Powertrain drives are shipped intact with operation manuals making installation in the field simple and convenient.



## SHHH, DO YOU HEAR THAT?

Connex motors produce a sound level less than 70 decibels. Excess noise in the workplace can lead to hearing loss and an increase in accidents and injuries. The low decibels of Connex makes your workplace safer for employees.

## TRAINING AND SUPPORT

Extensive training programs on Connex offer hands-on practice to help customers become familiar and learn advanced maintenance practices. Hytrol's Customer Care Team is accessible 24 hours a day via live chat, e-mail or phone for support.

## VARIOUS TEMPERATURES

The durable plastic belts can withstand temperatures from -4° to 140° F needed during manufacturing.

## TWO DIFFERENT LINES TO CHOOSE FROM:

### ALUMINUM

- Compact and flexible design is ideal for configuration and easy to change
- Anodized for corrosion resistance
- Ideal for material production
- Can ship in three days
- Available in 62 mm, 83 mm, 140 mm and 220 mm widths
- Wheel bends of 45°, 90° and 180° available
- Plain bends of 30°, 45°, 90° and 180° available
- Plastic belt comes in plain and friction top
- Motors with speeds of 25 to 231 feet per minute
- Round and flat-faced guiderails
- Can withstand temperatures from -4° to 140° F
- Spiral configuration available
- Gravity roller transitions
- Casters available

### POWDER-COATED STEEL

- Customizable design
- Can be painted any color
- Available to ship in six to eight weeks
- Load capacity of 200 pounds per linear foot
- Plain bends of 45°, 90° and 180° available
- Motors with speeds of 25 to 231 feet per minute
- Widths of 4.5" to 38" (114.3 mm to 965.2 mm)
- Rexnord, Regina, Habasit and Intralox belt options
- Round and flat-faced guiderails
- Can withstand temperatures from -4° to 140° F
- Gravity roller transitions
- Casters available

