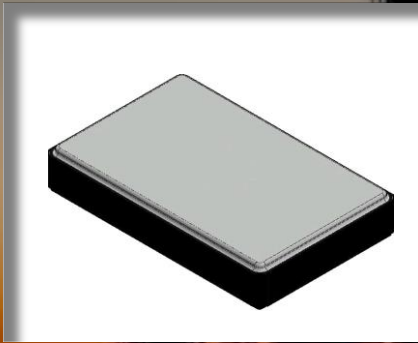


BQCSQ – 1.6x1.0 Tuning Fork Crystal



FEATURES

- ✓ 32.768 kHz
- ✓ SMD Construction
- ✓ 1.6x1.0mm Package Size
- ✓ High Stability
- ✓ Ultra Light Weight

Crystals

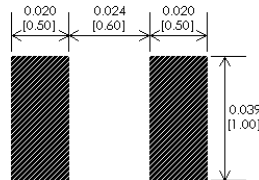
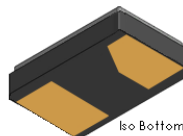
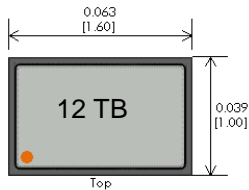
#blileytakesyoufurther

Part Number Configuration

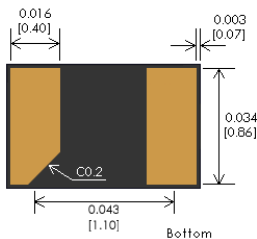
BQCSQ – 32K76 F – Y – – T

Center Frequency	Frequency Stability	Operating Temperature	Setting Tolerance	Load Capacitance
32.768kHz	Y: Coefficient -0.04ppm/°C ²	B: -20°C to +70°C C: -40°C to +85°C	B: ±10ppm D: ±20ppm	H: 9pF K: 12.5pF S: Specify

Physical Specifications



Recommended Landing Pattern



PIN	FUNCTION
1	Crystal
2	Crystal

Tolerances (mm) .X = ± 0.5, .XX = ±0.2 unless otherwise specified



Notes

- 1) Weight = 1.5gms typical

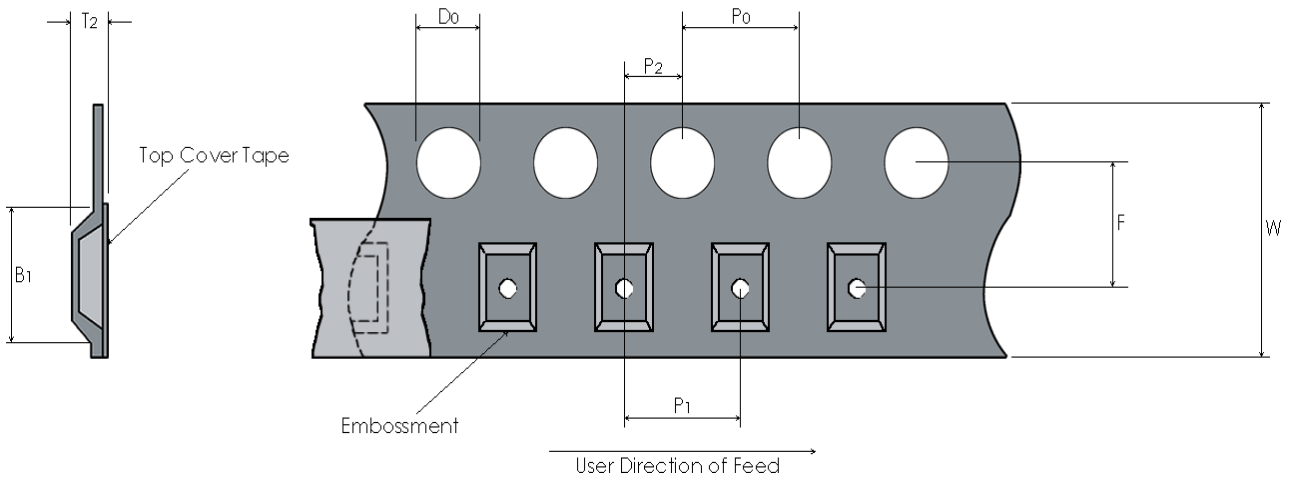
DISCLAIMER: Bliley Technologies, Inc. reserves the right to make changes to the product(s) and or information contained herein without notice. No liability is assumed as a result of their use or application. No intellectual property rights accompany the sale or delivery of any such product(s) or information.

Performance Specifications

Parameter	Conditions	Min	Typ	Max	Unit
Frequency Range	Fundamental		32.768		KHz
Frequency Tolerance (25°C)	Option B			±10	ppm
	Option D			±20	ppm
Temperature Coefficient		-0.028		-0.040	ppm/°C ²
Turnover Temperature		+20		+30	°C
Perturbation	Per 1°C			±3	ppm
Aging	1 st Year			±3	ppm
Equivalent Series Resistance	32.768KHz			90	kΩ
Insulative Resistance	@ 100Vdc ±15Vdc	500			MΩ
Drive Level			0.1	0.5	μW
C0 (Shunt Capacitance)			1.3		pF
CL (Load Capacitance)	Option H		9		pF
	Option K		12		pF
				20	pF
Operating Temp Range	Option B	-20		+70	°C
	Option C	-40		+85	°C
Storage Temp Range		-55		+125	°C
Sealing Method			Seam weld		
Moisture Sensitivity Level	1				

Tape and Reel

Embossed Carrier Dimensions (8mm, 12mm, 16mm, 24mm Tape Only)



Tape Dimensions (mm)								Reel Dimensions (mm)	
W	F	Do	Po	P1	P2	B1	T2	Outside Dia.	Parts / Reel
8	3.5	1.5	4.0	4	2.0	1.85	0.65	180	1000

Recommended Reflow Profile

Reflow Profile: in accordance to IPC/JEDEC J-STD-020 (Latest Revision)

Additional Notes:

- This part has been designed for pick and place reflow soldering
- This part may be reflowed once
- This part should not be reflowed in the inverted position

Packaging

Packaging: All packaging to conform to ESD Controls detailed in ANSI/ESD S20.20 (Latest Revision)