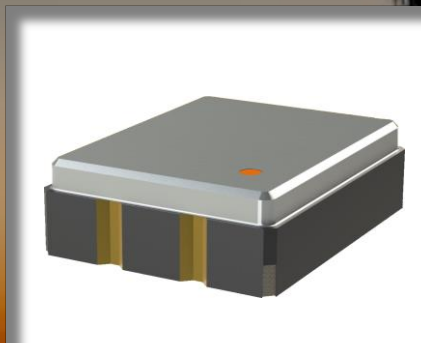


BOCS3-XXXMXX-XXXX –Non-PLL Crystal Oscillator



FEATURES

- ✓ SMD Construction
- ✓ Standard 3.2 x 2.5mm Package Size
- ✓ Mil-Std-202 Compliant

Avionics Grade Crystal Oscillator

#blileytakesyoufurther

Description

Bliley Crystal Oscillator are designed to meet the rigorous demands of QPL 55310. Bliley's single vertically integrated factory of Crystal and Oscillator Engineering allows quick-turn samples of custom frequencies to support short-term design cycle-times. Applications consisting of: Military, Instrumentation, SATCOM, and Telecommunications.

Block Diagram



Part Number Configuration

BOCS3 – M – – – – –

Center Frequency	Supply Voltage	Output Control	Frequency vs. Temperature	Operating Temperature	Output Type	Option	PLL
1.5MHz to 170MHz	B: 1.8V D: 3.3V G: 2.5V	N: N/A E: Enable T: Tristate	A: ±25ppm B: ±50ppm C: ±100ppm	B: -20°C to +70°C C: -40°C to +85°C D: -55°C to +125°C	D: HCMOS J: LVCMOS	T: Tape & Reel Y: T&R solder dipped	P: PLL N: Non-PLL

*Not all combinations of options may be possible

**Other options may be available

DISCLAIMER: Bliley Technologies, Inc. reserves the right to make changes to the product(s) and or information contained herein without notice. No liability is assumed as a result of their use or application. No intellectual property rights accompany the sale or delivery of any such product(s) or information.

Performance Specifications

Parameter	Conditions	Values			Unit
		MIN	TYP	MAX	
General					
Frequency Range	Fundamental	1.5		60	MHz
	3 rd Overtone(Non-PLL)	50		170	MHz
Frequency Stability					
Vs. Temperature(1°C Steps)	See Options (Max) Referenced to +25°C	±25, ±50, ±100			ppm
Perturbation				±3	ppm
Aging	1 st Year			±3	ppm
	5 Years			±5	ppm
Supply Voltage(Vdd)	Option B	1.62	1.8	1.98	Vdc
	Option D	2.97	3.3	3.63	Vdc
	Option G	2.25	2.5	2.75	Vdc
Current Consumption	1.5 – 50MHz			15	mA
	50 – 90MHz			30	mA
	90 – 170MHz			40	mA
Output Control	Enabled-High Disabled-Low				
Startup Time				5	mSec
Moisture Sensitivity Level	1				

Performance Specifications

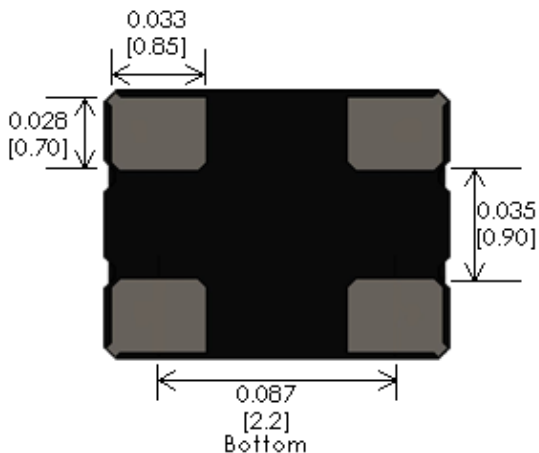
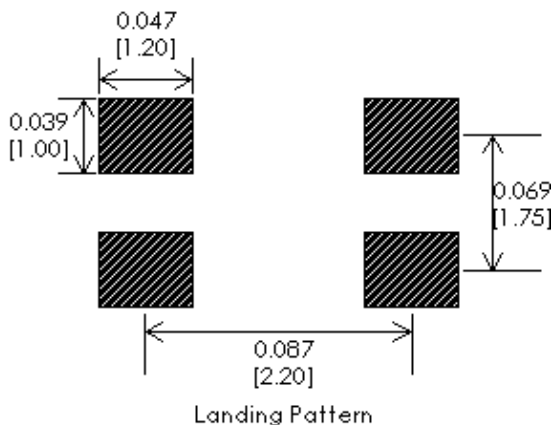
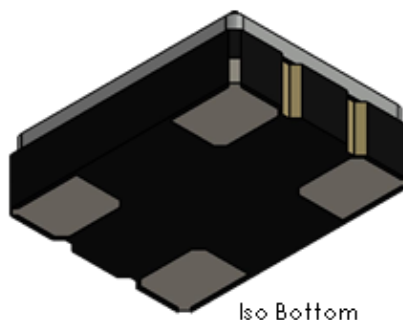
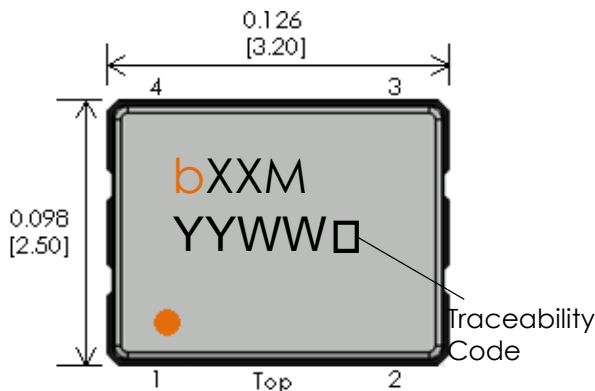
Parameter	Conditions	Values			Unit
		MIN	TYP	MAX	
Output Characteristics (HCMOS)					
High Output Level	Logic "1"	90% Vdd			Vdc
Low Output Level	Logic "0"	10% Vdd			Vdc
Rise/Fall Time	10% ↔ 90%	4			nSec
Duty Cycle		45	50	55	%
Load		15			pF

Parameter	Conditions	Values		Unit
		PLL	Non-PLL	
Phase Noise (100MHz)				
Phase Noise	Tested at +25°C	(TYP)	(TYP)	
	10Hz	-60	-60	dBc/Hz
	100Hz	-95	-95	dBc/Hz
	1KHz	-114	-125	dBc/Hz
	10kHz	-120	-135	dBc/Hz
	100kHz	-140	-144	dBc/Hz
Phase Jitter (RMS)	12KHz-20MHz	1	0.5	pSec

Environmental Compliance

Parameter	Conditions	Values			Unit
		MIN	TYP	MAX	
Operating Temperature	Option B	-20		+70	°C
	Option C	-40		+85	°C
	Option D	-55		+125	°C
Storage Temperature		-55		+125	°C
Solderability	MIL-STD-202 Method 208				
Shock	MIL-STD-202 Method 213 Test Condition I				
Vibration	MIL-STD-202 Method 204 Test Condition C				
Thermal Shock	MIL-STD-202 Method 107 Test Condition B-1				
Seal	MIL-STD-202 Method 112 Test Condition C & D				

Physical Specifications



PIN	FUNCTION
1	Output Control
2	Ground
3	RF Output
4	Supply Voltage

Tolerances (mm) .X = ±0.5, .XX = ±0.2 unless otherwise specified



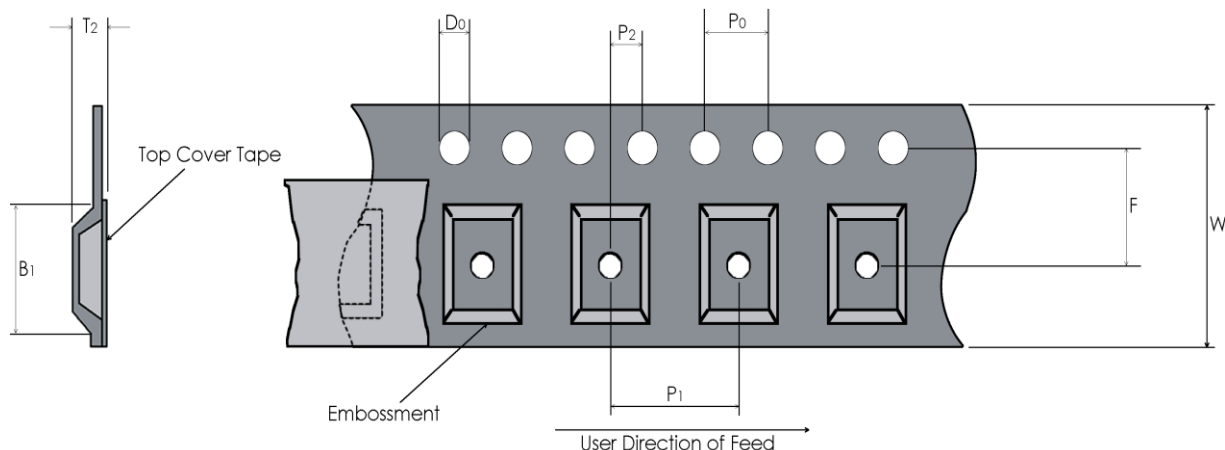
Notes

Connection Pads:

- Gold(10-40 μ in.) over Nickel (100-250 μ in.)
- Solder dipped (Sn60/Pb40 3% lead min) upon request

Tape and Reel

Embossed Carrier Dimensions (8mm, 12mm, 16mm, 24mm Tape Only)



Tape Dimensions (mm)								Reel Dimensions (mm)	
W	F	Do	Po	P1	P2	B1	T2	Outside Dia.	Parts / Reel
8	5.25	1.5	4.0	4.0	2.0	3.5	1.8	180	1,000

Recommended Reflow Profile

Reflow Profile: in accordance to IPC/JEDEC J-STD-020 (Latest Revision)

Additional Notes:

- This part has been designed for pick and place reflow soldering
- This part may be reflowed once
- This part should not be reflowed in the inverted position

Packaging

Packaging: All packaging must conform to ESD Controls detailed in ANSI/ESD S20.20 (Latest Revision)