

**FEATURES**

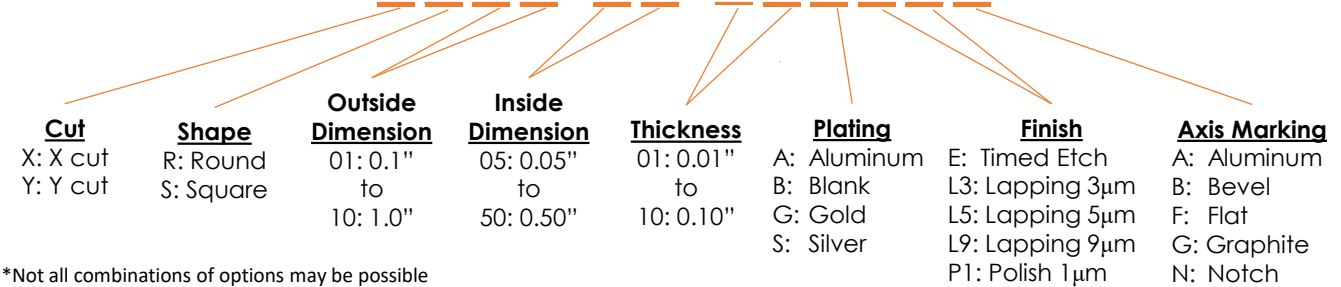
- ✓ Lithium Niobate substrate
- ✓ Custom shapes and sizes
- ✓ Blank or metalized plating
- ✓ Lapped, polished, or etched finishes

**Lithium Niobate Transducer Blank**

#blileytakesyoufurther

**Part Number Configuration**

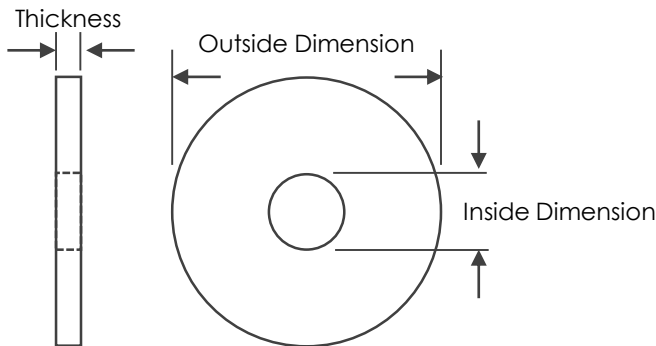
TLIN -



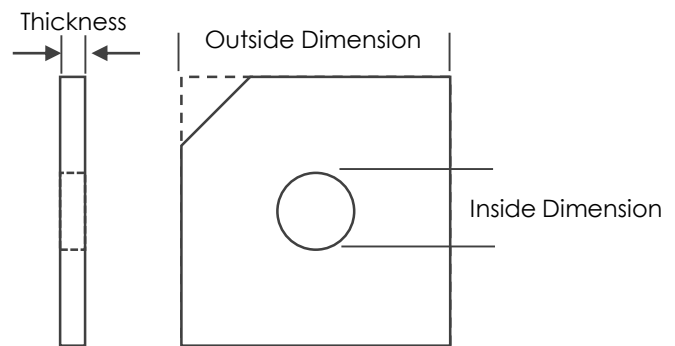
\*Not all combinations of options may be possible  
\*\*Other options may be available

**Physical Specifications**

**Round Blank**



**Square Blank**



Tolerances unless otherwise specified:

- Outside dimension =  $\pm 0.001$ "
- Thickness =  $\pm 0.001$ "
- Inside dimension =  $\pm 0.002$ "



Notes

**DISCLAIMER:** Bliley Technologies, Inc. reserves the right to make changes to the product(s) and or information contained herein without notice. No liability is assumed as a result of their use or application. No intellectual property rights accompany the sale or delivery of any such product(s) or information.