

ONEFILE EPORTFOLIO

TRAIN
TRACK
TEST

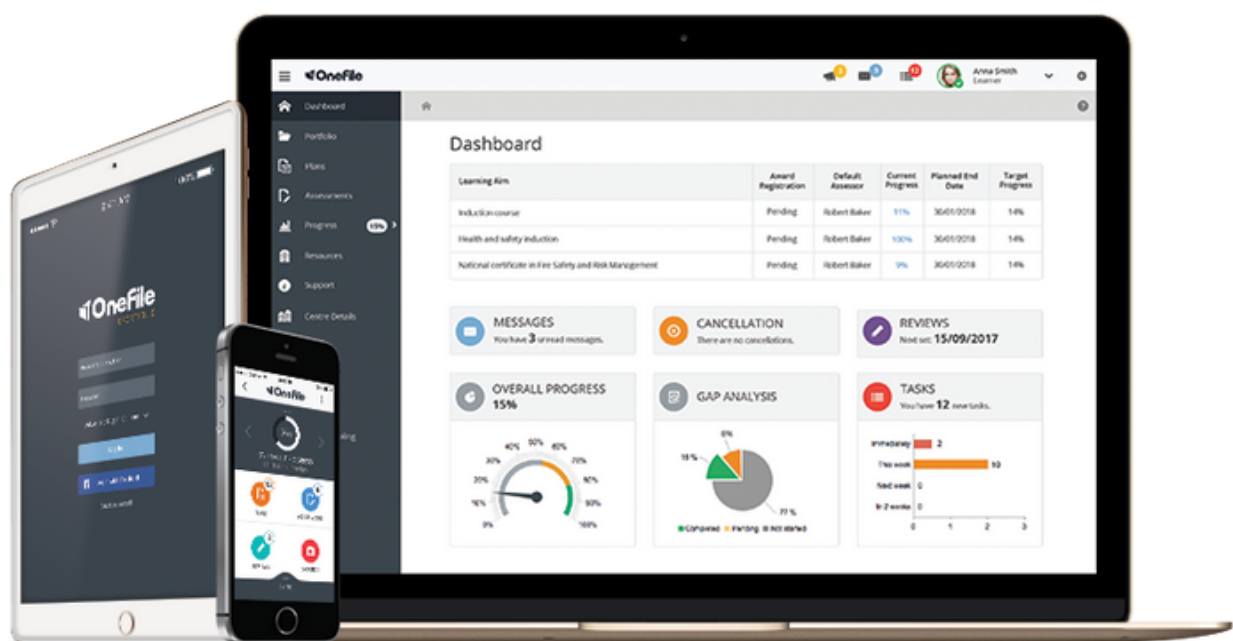
TRAIN ONLINE WITH ONEFILE

OneFile's eportfolio is the UK's only learning platform that brings training and assessment together - so you can access all the training tools you need in one place.

Instead of writing up notes on paper, learners can collect photos, audio and video recordings as evidence and sync it to their eportfolio using any device.

Assessors can track learner progress, send online feedback, assess remotely, map evidence to criteria, and generate real-time reports in just a few clicks.

There's no paperwork, printing, travel or hassle - just an easy assessment process from start to finish.



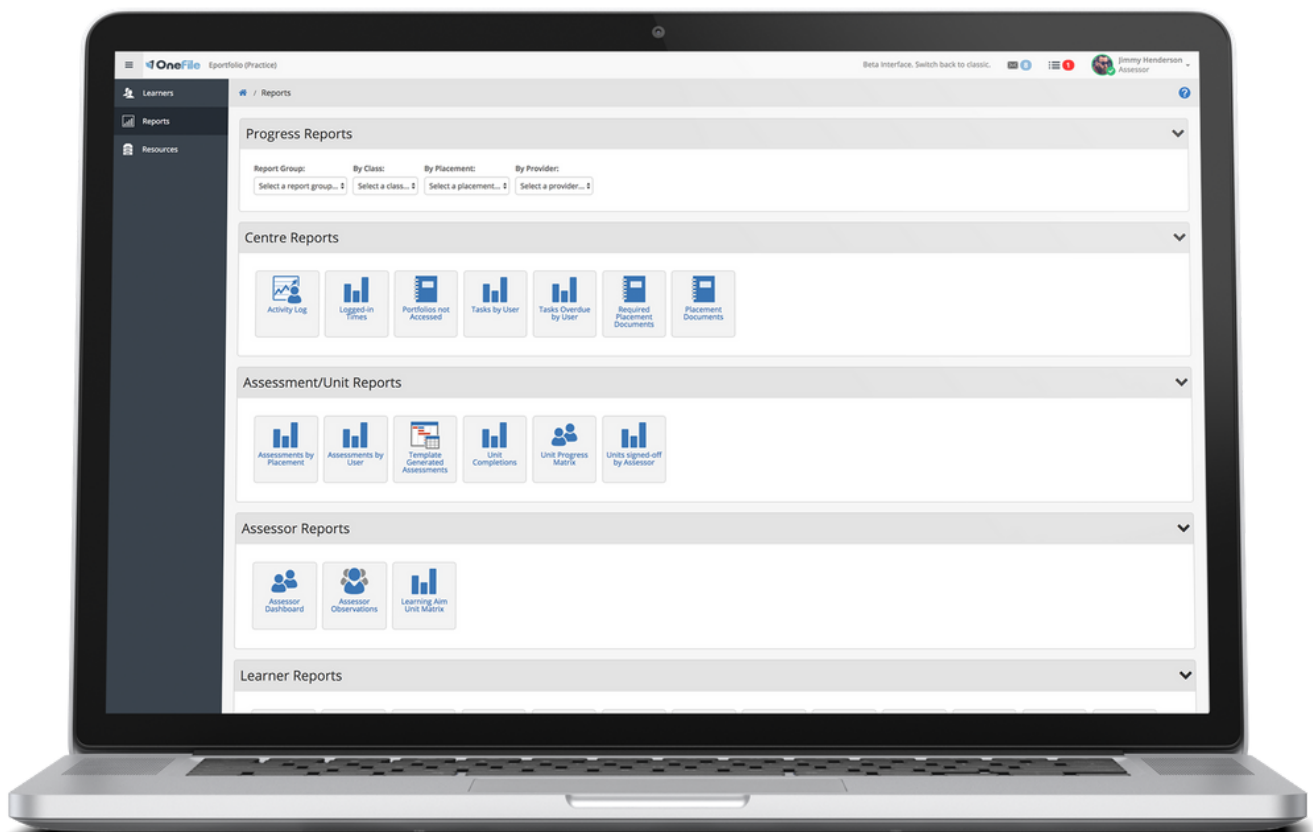
KEY FEATURES :

EFORMS

Our digital forms are quick to click, simple to send and easy to analyse – perfect for people on the go.

REPORTING

With OneFile's live reporting suite, you can access the exact data you need, when you need it – from progress rates to upcoming visits.



QUALITY TOOLS

Create custom sampling plans, audit trails and standardisation rules so your centre is always inspection ready.

BUILT-IN STANDARDS

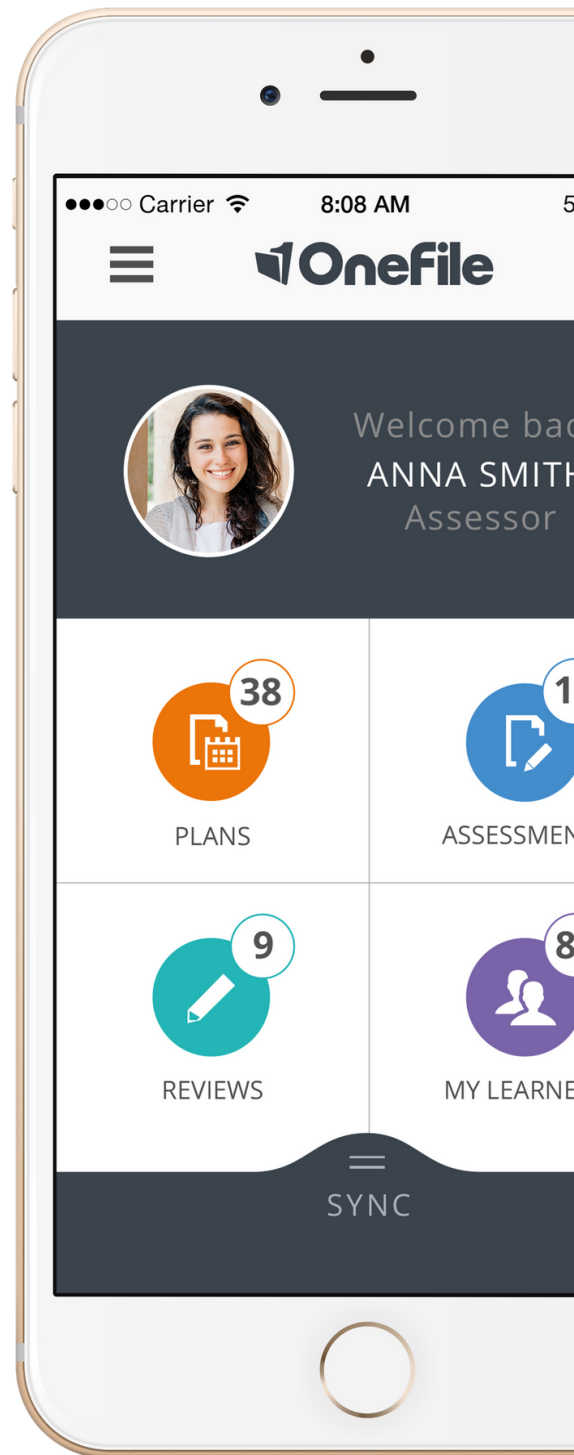
Our in-house standards team builds bespoke standards to suit your needs. We already have 100s uploaded to OneFile, so they're ready to go when you are!

MOBILE APP

Snap, store and sync evidence anytime, anytime, on any device with OneFile's mobile app.

TEMPLATES

With OneFile, you can build a bank of assessment plan templates customised to each qualification criteria.



BIG BENEFITS :

LOWER COSTS

Ditch the paperwork! Delivering training online reduces paper, printing, storage and travel costs by 80%!

ACHIEVE MORE

OneFile increases learner activity by 50% and timely completions by 35%, helping your users achieve more in less time.

HAPPY LEARNING!

OneFile makes learning mobile, engaging and active – increasing learner satisfaction rates to 98%

LET'S WORK TOGETHER.

OneFile is for everyone, everywhere. From apprenticeship training to professional development, OneFile can be used for all types of vocational training.

Our in-house experts will work closely with you to build bespoke learning aims, customise your centre, answer any questions you have and offer all the support your team needs.

By working together, we can help you deliver learning better.

The screenshot shows the OneFile software interface on a computer monitor. The interface is titled "OneFile Portfolio (Practice)" and includes a sidebar with "Learners", "Reports", and "Resources". The main content area is divided into several sections:

- EVOLUTIONARY PRACTICES**: A section with a green icon and the text "Nothing is attached".
- Feedback & Comments**: A section with a "Feedback to" dropdown set to "Evelyn Henderson (Learner)". It includes a rich text editor with a toolbar and a "Add Message Attachment" button. Below the editor, it shows "Words: 0 Characters: 0" and a checkbox "Create task to acknowledge this feedback".
- Visit Type**: A dropdown menu set to "Not specified".
- Assessor Travel Time**: A text input field set to "0 minutes".
- Assessor Assessment Time**: A text input field set to "0 minutes".
- Learner Assessment Time**: A text input field set to "0 minutes" with a checkbox "Off-the-job" next to it.
- Declaration & Signatures**: A section with a note "Only sign here when you have finished with this assessment and wish to send it to the next person." and a table for declarations and signatures.

Declaration	Name	Signed on Completion	Date
I agree that the information provided here is an accurate account of what has taken place.	Evelyn Henderson (Learner)	<input type="checkbox"/>	
I agree that the information provided here is an accurate account of what has taken place.	Jimmy Henderson (Assessor)	<input checked="" type="checkbox"/>	09/05/2017 11:48
I have sampled this evidence as part of my verification sample.	Internal Verifier	<input type="checkbox"/>	
I have sampled this evidence as part of my verification sample.	External Verifier	<input type="checkbox"/>	



@OneFileUK

facebook.com/OneFileUK

youtube.com/OneFileUK

+44 (0) 161 638 3876

www.onefile.co.uk

info@onefile.co.uk