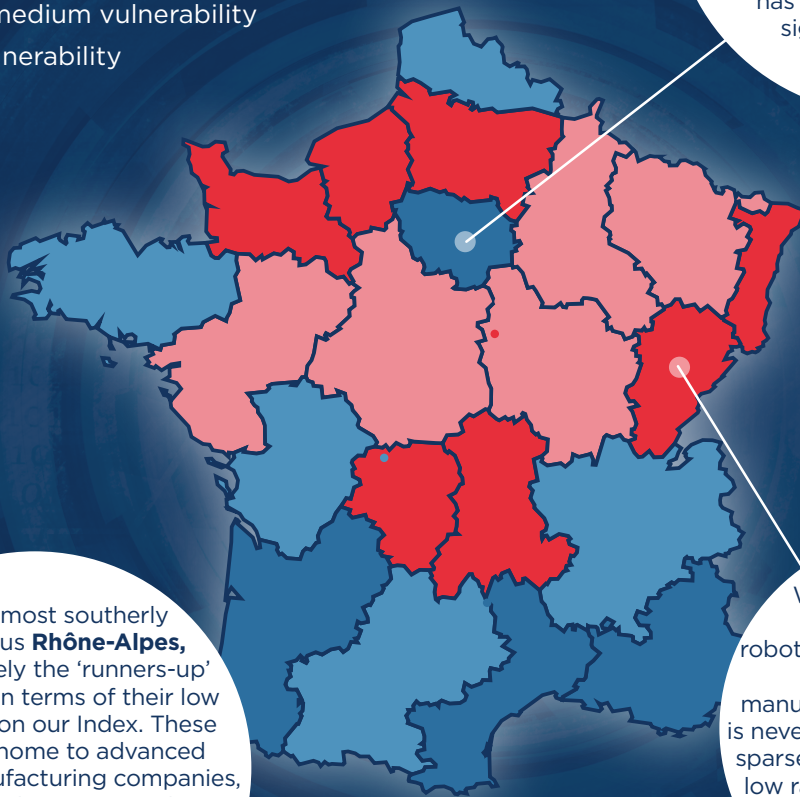


# FRANCE

- Low vulnerability
- Lower-medium vulnerability
- Upper-medium vulnerability
- High vulnerability



The **Île-de-France**, centred on Paris, is France's least-vulnerable region. It is least dependent on manufacturing jobs, and what manufacturing activity it does have is (a) highly productive and (b) the most robot-intensive in the country, alongside the Midi-Pyrenees. This means it has already undertaken significant levels of automation

France's most southerly regions, plus **Rhône-Alpes**, are collectively the 'runners-up' behind Paris in terms of their low vulnerability on our Index. These regions are home to advanced high-tech manufacturing companies, notably in leading cities such as **Toulouse** (home to Airbus, among others) and **Grenoble**, and thus benefit from a future-ready, highly skilled workforce.

We find that the most vulnerable region to robotization is **Franche-Comté**. France's most manufacturing-intensive region is nevertheless relatively rural and sparsely populated. Its relatively low rate of robotization means there could be high levels of automation coming.

## Most vulnerable regions

Region:	Index Score:
Franche-Comté	0.61
Basse-Normandie	0.51
Picardie	0.51
Limousin	0.51
Auvergne	0.49

## Least vulnerable regions

Region:	Index Score:
Île de France	0.03
Provence-Alpes-Côte d'Azur	0.26
Languedoc-Roussillon	0.30
Aquitaine	0.35
Midi-Pyrénées	0.36