

RS485 ISOLATOR, REPEATER & ETHERNET ADAPTOR



ATEX
M1
GROUP I
INTRINSICALLY
SAFE

MINING
•
TUNNELLING

TX2121 RS485 ISOLATOR

An RS485 serial communications line Isolator, designed to provide a certified interface between the hazardous Group I area and non-hazardous area. It provides optical isolation between the two areas.

TX2122.56 SINGLE REPEATER

Extends the distance of one single RS485 communications line.

TX2122.57 MULTIPOINT REPEATER

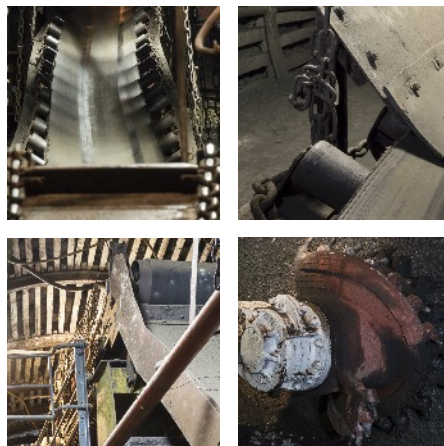
Extends and branches the incoming signal in three directions.

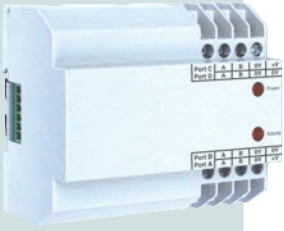
TX2122.57.68 MULTIPOINT REPEATER with Optical Fibre

This option is the same as a Multipoint Repeater but has two optical ports and two standard copper ports. The optical ports can be switched off and then it has four standard copper ports.

TX2123 ETHERNET ADAPTOR

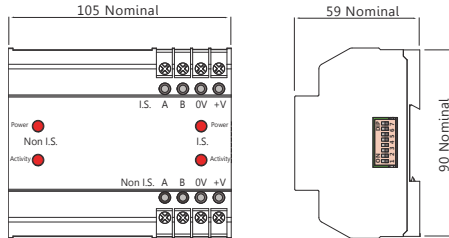
Converts datacomms between MODBUS TCP over Ethernet and MODBUS RTU over RS485.



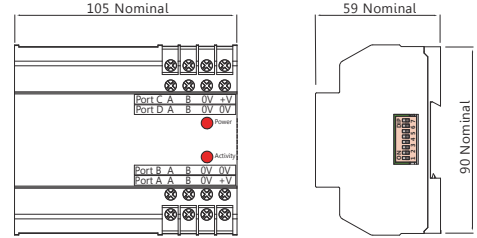


dimensions...

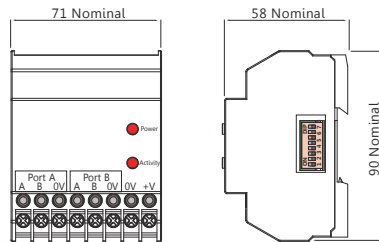
TX2121
SINGLE PORT ISOLATOR



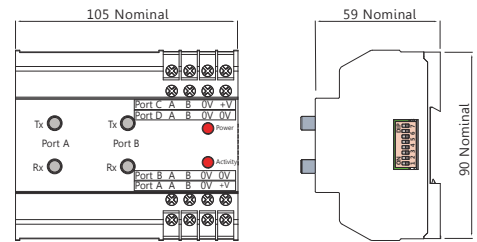
TX2122.57
MULTI-PORT REPEATER



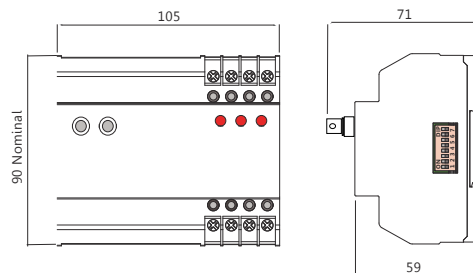
TX2122.56
SINGLE PORT REPEATER



TX2122.57.68
MULTI-PORT REPEATER with Optical Option



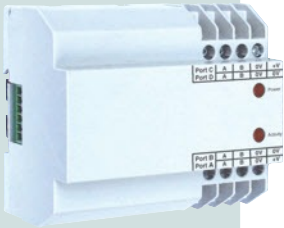
TX2123
ETHERNET ADAPTOR



ALL DIMENSIONS IN MM



ATEX
M1
GROUP I
INTRINSICALLY
SAFE



technical details...

Supply Voltage:	TX2121:	Non I.S. Side = 10V dc...14.4V dc (Nom 12V dc) Non I.S.
		I.S. Side = 10V dc...14.4V dc (Nom 12V dc) I.S. source
	TX2122/23:	10V dc...14.4V dc (Nom 12V dc) I.S. Source
	TX2123:	10V dc...14.4V dc (Nom 12V dc) I.S. Source

Typical Current Consumptions (whilst transmitting into 2 x 100 Ohms):

TX2121:	27mA @ 12V (each side)
TX2122.56:	30mA @ 12V
TX2122.57:	85mA @ 12V
TX2122.57.68:	140mA @ 12V (fibre optics operating)

Operating Temperature: -10°C...+50°C

Storage Temperature: -40°C...+70°C



ATEX
M1
GROUP I
INTRINSICALLY
SAFE

order reference...

TX2121	SINGLE PORT ISOLATOR
TX2122.56	SINGLE PORT REPEATER
TX2122.57	MULTIPOINT REPEATER
TX2122.57.68	MULTIPOINT REPEATER with Optical Option
TX2123	ETHERNET ADAPTOR

TROLEX LIMITED

NEWBY ROAD, HAZEL GROVE, STOCKPORT,

CHESHIRE SK7 5DY, UK

+44 (0)161 483 1435

sales@trolex.com

www.trolex.com