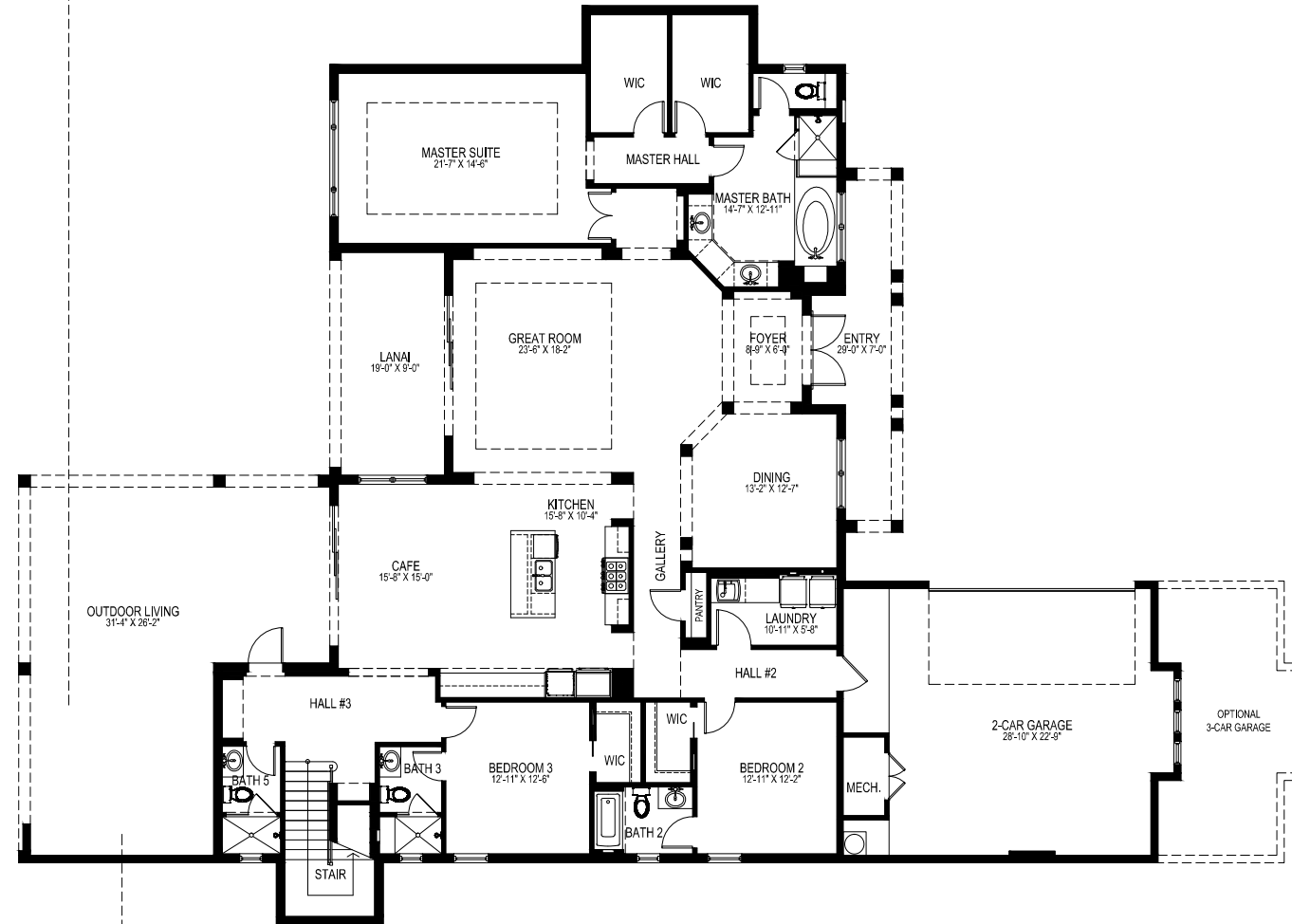


SECOND FLOOR



OUTDOOR KITCHEN OPTION

## The Isabella Two-Story at Caminetto

London Bay's four-bedroom Isabella Two-Story single-family home offers 3,991 square feet of air conditioned living space in Caminetto at Mediterra.

The Isabella Two-Story features an adjoining great room, kitchen and café, as well as a formal dining room. Sliding glass doors in the great room lead to a covered lanai, in addition to a covered outdoor living area. The spacious master suite offers dual walk-in closets. The second floor features a loft and a private guest suite.

Other optional features include a sunset overlook, a bonus room with zero-corner pocket sliding glass doors, and an extended outdoor living and dining area with outdoor kitchen.

### THE ISABELLA TWO-STORY

First Floor A/C Living	3,134
Second Floor A/C Living	857
<b>Total A/C Living</b>	<b>3,991</b>
2-Car Garage	681
Entry	190
Outdoor Living/Dining	723
Lanai	190
<b>Total Area Under Roof</b>	<b>5,775</b>
Optional 3-Car Garage	+253