

ATTENDEE REGISTRATION BROCHURE



# Southern States SYMPOSIUM & EXPO

*presented by* **FDLA**

BRINGING THE **BASICS**

INTO THE **FUTURE**



**MAY 9 - 11, 2019**

**RENAISSANCE ORLANDO AT SEAWORLD • ORLANDO, FL**



# Southern States SYMPOSIUM & EXPO

*presented by* **FDLA**

**MAY 9 - 11, 2019 • RENAISSANCE ORLANDO AT SEAWORLD • ORLANDO, FL**

**“BRINGING THE BASICS INTO THE FUTURE”** is the theme for the 2019 Symposium. Technology continues to change the dental industry. Make plans to attend and learn valuable information to enhance your skills as a dental technician.

**T**he Southern States Symposium & Expo, presented by FDLA, is the largest dental laboratory industry meeting in the country run by a nonprofit association. Everything offered at the Symposium will provide those in attendance an exceptional experience.

#### **BRING YOUR CLIENT DENTISTS!**

The Southern States Symposium & Expo courses are specifically designed for the entire dental team. These courses will help both the dentist and the dental technician work together on the latest trends and techniques.

**DON'T MISS THIS EXCELLENT OPPORTUNITY** *to be a part of one of the industry's largest meetings providing continuing education courses and an outstanding showcase of dental laboratory products and services.*



**OFFERING CDT/RG, AGD AND STATE  
OF FLORIDA APPROVED CREDITS**

*Cover and page two images credit:  
Chris Peterson, CDT*

# 2019 SCHEDULE OF EVENTS

## THURSDAY – MAY 9

12:30 p.m. – 5:30 p.m. **FDLA Matheson Memorial Golf Tournament**  
Shingle Creek Golf Club  
*Sponsored by: Kulzer*

## FRIDAY – MAY 10

7:00 a.m. – 6:00 p.m. **Registration Desk Open**

7:30 a.m. – 8:00 a.m. **Morning Beverage Break**  
*Sponsored by: American Dental Supply, Inc.*

8:00 a.m. – 8:30 a.m. **Welcome, Board Installation and President's Speech**

8:30 a.m. – 9:30 a.m. **OPENING KEYNOTE ADDRESS**  
**Forget the Plan, Stick to the Rules!**  
**Improv Techniques to Help Navigate Change**  
*Presented by: Jessica Brustad*  
*Sponsored by: Argen Corporation*

9:30 a.m. – 9:45 a.m. **Mid-Morning Beverage Break**  
*Sponsored by: Ivoclar Vivadent, Inc.*

9:45 a.m. – 11:15 a.m. **FRIDAY MORNING KEYNOTE**  
**The Future of Digital and Esthetics in the Age of Monolithic Restorations**  
*Presented by: Don Cornell*  
*Sponsored by: Jensen Dental*

9:45 a.m. – 11:45 a.m. **OPTIONAL HANDS-ON WORKSHOP**  
**Building Natural Contour and Emergence in Wax**  
*Presented by: Thomas Zaleske*  
*Sponsored by: Renfert*  
*(Pre-registration and additional fees required – Capacity 15.)*

9:45 a.m. – 11:45 a.m. **OPTIONAL HANDS-ON WORKSHOP**  
**Advances in Digital Workflow for Today's Dental Community – Part I**  
*Presented by: Ron Roche*  
*Sponsored by: Straumann Group*  
*(Pre-registration and additional fees required – Capacity 15. Special Note: This is a 2-day course, participants must attend both days to understand content and receive course credit.)*

11:15 a.m. – 11:45 a.m. **Awards Presentation and NADL/NBC Updates**

12:00 p.m. – 12:45 p.m. **FDLA Luncheon**  
*Sponsored by: Argen Corporation*

12:45 p.m. – 4:45 p.m. **HANDS-ON WORKSHOP (continued)**  
**Building Natural Contour and Emergence in Wax**  
*Presented by: Thomas Zaleske*  
*(Pre-registration and additional fees required.)*

12:45 p.m. – 4:45 p.m. **HANDS-ON WORKSHOP (continued)**  
**Advances in Digital Workflow for Today's Dental Community – Part I**  
*Presented by: Ron Roche*  
*(Pre-registration and additional fees required.)*

1:00 p.m. – 3:00 p.m. **AFTERNOON KEYNOTE**  
**Maximizing Zirconia Profits and Production Efficiencies with Ivoclar Digital**  
*Presented by: Nelson Rego, CDT*  
*Sponsored by: Ivoclar Vivadent, Inc.*

3:00 p.m. – 6:00 p.m. **FDLA Expo Hall Open**

3:00 p.m. – 6:00 p.m. **Expo Hall Kickoff Reception**  
*Sponsored by: Zahn Dental*

6:00 p.m. – 8:00 p.m. **FDLA Friday Night Reception at the Renaissance Orlando at SeaWorld**  
*Reception Sponsored by: Affordable Dentures Dental Laboratories*

## SATURDAY – MAY 11

7:00 a.m. – 3:30 p.m. **Registration Desk Open**

7:30 a.m. – 8:00 a.m. **Morning Beverage Break**  
*Sponsored by: Cardinal Rotary Instruments*

8:00 a.m. – 9:30 a.m. **A COURSES**

8:00 a.m. – 12:00 p.m. **OPTIONAL HANDS-ON WORKSHOP**  
**Digital Design for the Production Laboratory – Getting the Most Out of Your Mouse**  
*Presented by: Jason Atwood & Chris Kabot*  
*Sponsored by: Core3d Centres*  
*(Pre-registration and additional fees required – Capacity 16.)*

8:00 a.m. – 12:00 p.m. **OPTIONAL HANDS-ON WORKSHOP**  
**Advances in Digital Workflow for Today's Dental Community – Part II**  
*Presented by: Ron Roche*  
*Sponsored by: Straumann Group*  
*(Pre-registration and additional fees required – Capacity 15. Special Note: This is a 2-day course, participants must attend both days to understand content and receive course credit.)*

9:30 a.m. – 3:30 p.m. **FDLA Expo Hall Open**

9:30 a.m. – 11:00 a.m. **Expo Hall Break**

11:00 a.m. – 12:00 p.m. **B COURSES**

12:00 p.m. – 1:00 p.m. **Expo Hall Break / Lunch in Expo Hall**

12:00 p.m. – 1:00 p.m. **Gavel Club Luncheon (Invitation Only)**

1:00 p.m. – 2:00 p.m. **C COURSES**

1:00 p.m. – 3:00 p.m. **HANDS-ON WORKSHOP (continued)**  
**Digital Design for the Production Laboratory - Getting the Most Out of Your Mouse**  
*Presented by: Jason Atwood & Chris Kabot*  
*(Pre-registration and additional fees required.)*

1:00 p.m. – 3:00 p.m. **HANDS-ON WORKSHOP (continued)**  
**Advances in Digital Workflow for Today's Dental Community – Part II**  
*Presented by: Ron Roche*  
*(Pre-registration and additional fees required.)*

1:00 p.m. – 5:30 p.m. **NBC Exams (CDT & RG Exams)**  
*(Candidates must pre-register with NBC)*

2:00 p.m. – 3:30 p.m. **Expo Hall Break / Afternoon Beverage Break**

3:30 p.m. – 4:30 p.m. **Regulatory Standards**  
**Choose One Course:**

**COURSE D1: Regulatory Compliance: Insurance for Protecting Your Assets!**  
*Presented by: Gary Morgan, CDT*  
*Sponsored by: Safelink Consulting*  
*(1 Hour Regulatory Standards Credit / 1 Hour Prevention of Medical Errors Credit)*

**COURSE D2: Florida Laws & Rules Update – A New Approach**  
*Presented by: Bennett Napier, CAE*  
*Sponsored by: FDLA*  
*(1 Hour Regulatory Standards Credit/ 1 Hour Laws & Rules Credit)*

## Opening Keynote Address

### *Forget the Plan, Stick to the Rules!* *Improv Techniques to Help Navigate Change*

*Presented by: Jessica Brustad*

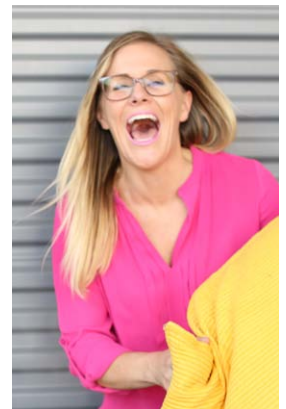
**CDT/RG: 1 hour of Professional Development Credit • State of Florida: 1 hour of General Credit**

**T**he dental world is becoming increasingly digital, resulting in confusing workflows, obsolete technology, and constant modifications to your business plan. With all of these developments, how can your dental lab keep up with the rapid pace of technology while keeping their sanity? To succeed in a constantly evolving industry, dental labs must remember that one thing is certain: things will CHANGE!

In this talk, Jessica Brustad will outline strategies for navigating change. Jessica will review exercises she uses to adapt to change both personally and professionally. Pulling from her improv comedy experience, she will reveal her approach to what she likes to call “Transformation Opportunities.” Learn how to adapt, shift, and respond positively in the moment instead of reacting, hesitating, or avoiding. She will also walk you through how other companies have leveraged change to revolutionize not only their own business, but their entire industry. Jessica’s mindful practices as well as her extensive experience helping labs shift into the digital workflow are sure to leave you with constructive tools to apply to your business. What’s more, she might even make you laugh!

#### **Jessica Brustad**

Jessica Brustad is an Improv & Stand-Up Comedian, Yoga Instructor, and Laughter Yoga Leader. Yup, you heard right - she teaches people how to Laugh! Jessica was also the Product Manager of Equipment at the Argen Corporation, the world’s largest manufacturer of precious dental alloys and the global leader in digital dentistry, from 2013 - 2018. In her five years with Argen, Jessica provided hundreds of labs with the most cost-effective CAD/CAM equipment solutions for their business. Jessica has a passion for helping labs grow and learn how to navigate the new digital dentistry landscape. Her unique style of high energy mixed with mindfulness practices are sure to entertain, educate, and motivate you on your own path to success, balance, and most of all, Joy!



## Friday Morning Keynote

### *The Future of Digital and Esthetics in the Age of Monolithic Restorations*

*Presented by: Don Cornell*

**CDT/RG: 1.5 hours of Scientific Credit • State of Florida: 1.5 hours of General Credit**

**C**AD/CAM continues to transform the dental industry. Beyond manufacturing, digital technologies are rapidly reshaping the way we diagnose, treatment plan and communicate. And rapid improvements in CAD/CAM materials have created a growing demand for monolithic restorations. With roughly 85% of all metal free restorations now monolithic, technicians must find new materials and techniques for achieving esthetic outcomes traditionally achieved with ceramic layering.

In this presentation, Mr. Cornell will demonstrate through several patient cases, the growing utility of digital technologies in the laboratory and the dental clinic, and the expanding role of the dental technologist as a result. He will also look critically at CAD/CAM materials, where we are today and where we are headed, and how to achieve exceptional esthetic outcomes with monolithic and minimally layered restorations.

#### **Don Cornell**

Mr. Cornell graduated from his Dental Technology Program in 1981. He worked in a small quality laboratory until opening his own lab in 1985. In 1988, Mr. Cornell began lecturing and teaching advanced ceramic techniques to dentists and technicians in the United States. In 1989, he moved to Milwaukee, Wisconsin, to work with Dr. Robert Winter, where he stayed until 1993. Mr. Cornell now operates his laboratory in Madison, Connecticut. He has been extensively published in both dental and technical journals and has lectured and taught advanced ceramic techniques in more than thirty countries around the world to date.





## Friday Afternoon Keynote

### Maximizing Zirconia Profits and Production Efficiencies with Ivoclar Digital

Presented by: Nelson Rego, CDT

CDT/RG: 2 hours of Scientific Credit • State of Florida: 2 hours of General Credit

Nelson Rego, owner of Smile Designs by Rego dental lab, will present a technical and business overview of the current leading and upcoming CAD/CAM options in zirconia and milling technology. In the zirconia segment, particular emphasis will be placed on the myths and realities of today's available zirconia materials, how to differentiate between zirconia technologies, and reaching an acceptable profit margin. Additionally, Nelson will cover his experiences with recent milling machine introductions, including options for the fast and precise milling of lithium disilicate, as well as options designed for high volume labs in need of automation across multiple working shifts. Finally, the workflow efficiencies found in today's CAM software options will be discussed.

#### Nelson Rego, CDT

Nelson Rego owns and operates "Smile Designs by Rego," a progressive dental laboratory specializing in ceramics in Santa Fe Springs, California. Nelson and Juan Rego, CDT established the laboratory in 1980. Nelson is a certified dental technician (CDT), who has studied with some of the best dentists and ceramists in dentistry today. Additionally, he is an Accredited Member of the American Academy of Cosmetic Dentistry. He has written over 70 articles pertaining to dental materials and techniques, which have appeared in many of the leading dental journals. He is also an evaluator and speaker for several dental product manufacturers and is the co-creator of Microthin Veneers, which are a no-prep approach to cosmetic dentistry.



Sponsored by:



## CONTINUING EDUCATION REQUIREMENTS FOR FLORIDA DENTAL LABS

Effective January 31, 2018, the Department of Health will accept proof of certification by the National Board for Certification in Dental Laboratory Technology to satisfy your continuing education requirements of Rule 64B27-1.003, F.A.C.

64B27-1.003 Continuing Education Requirements. (6) Owners or designated employees that are certified by the National Board for Certification in Dental Laboratory Technology as a Dental Laboratory Technician during the biennium can demonstrate compliance with the continuing education requirements of this rule by entering his or her Certified Dental Technician certification number and submitting a copy of his or her active certification card in the CE tracking system.

### What You Need To Know To Be In Compliance

#### If your designee is a CDT

\*Effective January 31, 2018 – CDT's in good standing can upload a copy of their CDT card to CE Broker and waive all other requirements (FL Laws & Rules, Prevention of Medical Errors and General Credits).

#### If your designee is NOT a CDT

Your laboratory will need 18 hours every two years:

- 1 Hour – FL Laws and Rules of Dental Laboratories and Dental Technicians
- 2 Hours – Prevention of Medical Errors (on either OSHA or FDA)
- 15 Hours – General (any combination)

#### Who is responsible for attaining all 18 hours of Continuing Education?

Each Florida dental laboratory for their February 2020 state registration renewal must prove that a person employed by the laboratory for one full year at full time status has acquired 18 hours of continuing education credit approved by the Florida Board of Dentistry. Florida requires every business that is registered as a dental laboratory with the Florida Department of Health to document that the owner of the laboratory, or a dental technician who is employed full time by the laboratory, maintains 18 hours of approved continuing education in dental technology every two years.

**Can laboratories split up the total continuing education hours between employees?** Laboratories may not split the required continuing education credit between employees.

- **Where can I get my credits and how do I know if the courses I attend will be accepted by the State of Florida?** The designated laboratory employee may obtain continuing education credits through online offerings, home study or in person courses. It is the responsibility of the laboratory to ensure a course is approved for Florida credits.
- **What is the timeframe in which I must attain all 18 hours?** All of the 18 hours that will be required with the February 2020 registration renewal must have been collected between March 2018 and February 2020. Credits earned before March 2018 will NOT be counted towards the required 18 hours of continuing education required in February 2020.
- **Sworn Affidavit and Certificates of Attendance** Florida laboratories will be required to submit a sworn affidavit with their February 2020 registration renewal listing the date, location, sponsor, subject matter and hours of completed continuing education for the designated employee. The laboratory will also be required to keep backup receipts, certificates of completion or vouchers for the submitted courses in case the state requests the information. The state may request this backup information at any time, or may select laboratories at random to audit.
- The Florida Dental Laboratory Association and the Florida Dental Association are automatically accepted as approved providers of acceptable continuing education credits by the Florida Board of Dentistry.
  - o Suppliers, schools or other entities may be approved by the Florida Board of Dentistry to provide credits, after completing an application, which can currently be found on [www.cebroke.com](http://www.cebroke.com). You may find a list of courses approved by the Florida Board of Dentistry at [www.cebroke.com](http://www.cebroke.com). Online courses and courses outside the state of Florida are eligible for approval.

For more information, please contact FDLA at 850.224.0711. For a list of FDLA sponsored continuing education courses and events, please visit [www.fdma.net](http://www.fdma.net).

# 2019 COURSES & EXPO SCHEDULE – SATURDAY, MAY 11

	CERAMICS / CROWN & BRIDGE	REMOVABLES	IMPLANTS	LABORATORY MANAGEMENT	6 HR – OPTIONAL WORKSHOP	6 HR – OPTIONAL WORKSHOP
8:00 A.M. – 9:30 A.M.  <b>A COURSES</b>	<b>COURSE A1</b>  Rising Tide of Zirconia: A Balancing Act of Esthetics and Strength to Fit the Patient Needs  Russell Giordano II, D.M.D., D.Sc., CAGS Prosthodontics, F.A.D.M., F.A.D.I.  <i>Sponsored by:</i> VITA	<b>COURSE A2</b>  Hybrid Bar, All on 4, All on Anything  Thomas Zaleske  <i>Sponsored by:</i> Matrix Dental Laboratory & Consulting	<b>COURSE A3</b>  Restorative Solutions for Implant Restorations  Felix Pages, CDT  <i>Sponsored by:</i> VITA	<b>COURSE A4</b>  The Edutainer Presents – “You Have Been Promoted to Manager, Now What?”  Anthony Calanico, CDT  <i>Sponsored by:</i> FDLA	Digital Design for the Production Laboratory – Getting the Most Out of Your Mouse  Jason Atwood and Chris Kabot  <i>Sponsored by:</i> Core3d Centres	Advances in Digital Workflow for Today’s Dental Community (2-day workshop – cont’d from Friday)  Ron Roche  <i>Sponsored by:</i> Straumann Group
9:30 A.M. – 11:00 A.M.	EXPO HALL OPEN (Expo Hall Opens at 9:30 A.M.)					
11:00 A.M. – 12:00 P.M.  <b>B COURSES</b>	<b>COURSE B1</b>  Designing a Full Arch with White Peak’s PEEK and Zirconia Materials  Richard Wodzinski  <i>Sponsored by:</i> White Peaks	<b>COURSE B2</b>  Creating the Flexible Mindset  Bryan Johnson  <i>Sponsored by:</i> Snow Rock USA	<b>COURSE B3</b>  Utilizing Digital Tools to Maximize Time and Increase Predictability in Implant Dentistry  Luiz H. Gonzaga, DDS, MS  <i>Sponsored by:</i> Straumann Group	<b>COURSE B4</b>  Direct, Affordable 3D Printing  Chris Frye  <i>Sponsored by:</i> Whip Mix Corporation		
12:00 P.M. – 1:00 P.M.	EXPO HALL OPEN (Lunch in Expo Hall)					
1:00 P.M. – 2:00 P.M.  <b>C COURSES</b>	<b>COURSE C1</b>  The Power of inLab 18  Jay Black, CDT  <i>Sponsored by:</i> Dentsply Sirona	<b>COURSE C2</b>  The “Why” Behind Occlusal Appliances  Dr. Kelley Brummett  <i>Sponsored by:</i> The Pankey Institute for Advanced Dental Education and FDLA	<b>COURSE C3</b>  The Clear Aligner Craze: What’s in it for Me? How to Get Started and Maintain Continued Sustainability  Jamie Seabolt  <i>Sponsored by:</i> FDLA	<b>COURSE C4</b>  Effective Communication for Supervisors  Jackie Morris  <i>Sponsored by:</i> FDLA  <i>Open to Owners &amp; Managers Only</i>	Digital Design for the Production Laboratory – Getting the Most Out of Your Mouse (cont’d)  1:00 p.m. – 3:00 p.m.	Advances in Digital Workflow for Today’s Dental Community (cont’d)  1:00 p.m. – 3:00 p.m.
2:00 P.M. – 3:30 P.M.	EXPO HALL OPEN					
3:30 P.M. – 4:30 P.M.  <b>D COURSES</b>  (Choose One Course)	<b>COURSE D1</b>  Regulatory Compliance: Insurance for Protecting Your Assets!  Gary Morgan, CDT  <i>Sponsored by: Safelink Consulting</i>			<b>COURSE D2</b>  Florida Laws & Rules Update – A New Approach  Bennett Napier, CAE  <i>Sponsored by: FDLA</i>		



FDLA is a State of Florida  
Approved CE Provider



## CDT/RG Credits

All Southern States Symposium & Expo  
courses have been approved by the National  
Board for Certification for CDT/RG Credits.



## AGD Credits

Approved PACE Program Provider FAGD/MAGD Credit  
Approval does not imply acceptance by a state or provincial  
board of dentistry or AGD endorsement.

## CERAMICS / CROWN & BRIDGE

### COURSE # A1 – 8:00 A.M. – 9:30 A.M.

CDT/RG: 1.5 hours of Scientific Credit

State of Florida: 1.5 hours of General Credit

#### Rising Tide of Zirconia: A Balancing Act of Esthetics and Strength to Fit the Patient Needs

by Russell Giordano II, D.M.D., D.Sc., CAGS Prosthodontics, F.A.D.M., F.A.D.I.

Zirconia is now the primary restorative material used in the dental industry. The reality is that we use zirconia as a universal material. Used for single to multiple unit monolithic restorations, fully-layered to micro-layered, and fixed hybrid frameworks that often replace soft tissue. But with this prolific zirconia market, which material should be used for what treatment plan? What compromises are made when selecting a translucent material over strength? In addition, new machinable restorative materials have unique properties that mandate specific processing techniques, but may offer better long-term results. This lecture will provide insight of material solutions available to meet patient treatment planning, fracture resistance, clinically relevant strength, esthetics, and predictability. Management techniques of new implant material offering force absorbent properties to decrease downstream problematic issues will also be explored. What is cubic-zirconia anyway? Join Dr. Russell Giordano in this fascinating journey of understanding, selecting, and processing of today's premier machinable materials to meet the patient needs.

### COURSE # B1 – 11:00 A.M. – 12:00 P.M.

CDT/RG: 1 hour of Scientific Credit

State of Florida: 1 hour of General Credit

#### Designing a Full Arch with White Peak's PEEK and Zirconia Materials

by Richard Wodzinski

In this course, you will learn how to design a frame work with White Peak's PEEK material. In addition, Mr. Wodzinski will illustrate the appropriate zirconia to use for your cases and why. Attendees will also learn which rotary wheel to use while adjusting with the Peak Performance Rotary.

### COURSE # C1 – 1:00 P.M. – 2:00 P.M.

CDT/RG: 1 hour of Scientific Credit

State of Florida: 1 hour of General Credit

#### The Power of inLab 18

by Jay Black, CDT

This lecture will discuss the exciting new features of inLab SW 18, including the new model builder, 1 to 1 copy, multilayer gingiva, milling Dentures and much more.

*Learning Objectives:*

1. To have a thorough understanding of the inLab model builder and the different design options available
2. To understand the advantages of using the 1 to 1 copy design option when fabricating larger cases
3. To understand when and how to use the Multilayer Gingiva Design option
4. Utilizing new materials, including, Cercon and Celtra.

## REMOVABLES

### COURSE # A2 – 8:00 A.M. – 9:30 A.M.

CDT/RG: 1.5 hours of Scientific Credit

State of Florida: 1.5 hours of General Credit

#### Hybrid Bar, All on 4, All on Anything

by Thomas Zaleske

Is your digital/milling sweet spot narrow or non-existent? Are you still wondering about where and how to start, or how other dental laboratories are fabricating them? Then this is the presentation for you! Let a dental technician who specializes in traditional fabrication, is a NADL education award winner, and dental lab consultant explain and help you navigate through not only the basics, but also the nuances that provide the needed know how and rationale to outsource the bar and traditionally fabricate these rather simple prosthetics.

*Presentation will cover:*

- Step by step versions of fabrication.
- What to look for when choosing a milling source.
- Communication tools.
- Set-up and processing techniques.
- Characterizing and finishing techniques.

(continued)

## REMOVABLES (continued)

### COURSE # B2 – 11:00 A.M. – 12:00 P.M.

CDT/RG: 1 hour of Scientific Credit

State of Florida: 1 hour of General Credit

#### Creating the Flexible Mindset

by Bryan Johnson

This lecture will cover clinical lab communication protocols and guidelines including useful marketing ideas, material choice, clasp considerations and contradictions, adjustment scenarios for clasp and partial design and much more. Also, a brief, but essential hybrid partial breakdown will be discussed, which will aid in helping your clients achieve a flexible mindset for successful partial deliveries from the provisional to the long-term.

### COURSE # C2 – 1:00 P.M. – 2:00 P.M.

CDT/RG: 1 hour of Scientific Credit

State of Florida: 1 hour of General Credit

#### The “Why” Behind Occlusal Appliances

by Dr. Kelley Brummett

Do you ever wonder why dentists make occlusal appliances? This discussion will provide you with the information you need to understand the three main reasons why occlusal appliances are recommended. Occlusal appliances are utilized for diagnosis, pain, and protection. We will discuss the process dentists go through to collect the data for occlusal therapy, and what information you need as the lab to fabricate and make the appliance. We will briefly discuss the different types of appliances and how to improve the dentist/ lab communication. Collaboration is the key to provide a product that the lab, dentist and patient can use and provide the framework for our patient's preferred future.

## IMPLANTS

### COURSE # A3 – 8:00 A.M. – 9:30 A.M.

CDT/RG: 1.5 hours of Scientific Credit

State of Florida: 1.5 hours of General Credit

#### Restorative Solutions for Implant Restorations

by Felix Pages, CDT

This lecture will guide the participants in the selection of restorative options for implant-supported restorations. Discussions will include identifying tissue Biotypes and their importance in restoring implants, provisional material used and abutment design for cemented and/or screw retained restorations. Also discussed will be choosing the right material for the final prosthesis, including newer hybrid zirconia and firing protocols for large zirconia implant supported restorations. Milled provisional restorations for implant restorations and importance of occlusion with implant supported restorations to avoid clinical and laboratory problems will be presented. This lecture is for both clinicians and laboratory technologists.

##### Learning Objectives:

- Understand available implant materials and how to properly choose the right material for the patient.
- Proper emergence profile design to help in esthetics and patient hygiene.
- Understanding of common mistakes of material choice and design.
- Shading techniques to match materials to natural tooth characteristics.

### COURSE # B3 – 11:00 A.M. – 12:00 P.M.

CDT/RG: 1 hour of Scientific Credit

State of Florida: 1 hour of General Credit

#### Utilizing Digital Tools to Maximize Time and Increase Predictability in Implant Dentistry

by Luiz H. Gonzaga, DDS, MS

Implant dentistry has changed considerably since Dr. Branemark published his discovery of osseointegration. The modern implant materials and design have made it possible to achieve predictable survival rates, but unfortunately, sometimes the prosthetic results are far from ideal. The evolution of imaging technology and computer assisted surgery associated with a restorative-driven treatment plan can provide successful outcomes to our patients. Until recently, computers have only been at the periphery of health science, used primarily for research and record keeping. Today, the combination of computer science and medicine is leading to a variety of breakthroughs. This presentation will discuss aspects of treatment planning and technologies that can catalyze better long term success to the implant patient. We will cover Cone Beam Tomography treatment planning, CAD/CAM surgical guides and computer aided surgery.

- Highlight the interdisciplinary approach to planning and treatment for implant patients, with emphasis on the team approach
- Understand the efficiencies of the digital dentistry workflow.
- Learn how to adapt to the rapidly changing dental market to meet patient needs.

(continued)



## IMPLANTS (continued)

### COURSE # C3 – 1:00 P.M. – 2:00 P.M.

CDT/RG: 1 hour of Scientific Credit  
State of Florida: 1 hour of General Credit

#### The Clear Aligner Craze: What's in it for Me? How to Get Started and Maintain Continued Sustainability

by Jamie Seabolt

This class will showcase the different software programs for clear aligner design, explain the different materials, equipment for fabrication, and lab outsourcing options. We will discuss what doctors like and dislike with emphasis on organization and communication of cases.

## LABORATORY MANAGEMENT

### COURSE # A4 – 8:00 A.M. – 9:30 A.M.

CDT/RG: 1.5 hours of Professional Development Credit  
State of Florida: 1.5 hours of General Credit

#### The Edutainer Presents – “You Have Been Promoted to Manager, Now What?”

by Anthony Calanico, CDT

This is a show for managers and owners created by a manager. Most managers become managers because they are dependable and work hard, not because they attended any type of management course. This creates a huge problem for new managers and even owners.

Presented in an educational and entertaining way, this session will cover ways to manage yourself and your team. Profits and time management techniques will be discussed. You will also learn what reports to print and why, products to market and why and delegation of tasks and why.

### COURSE # B4 – 11:00 A.M. – 12:00 P.M.

CDT/RG: 1 hour of Scientific Credit  
State of Florida: 1 hour of General Credit

#### Direct, Affordable 3D Printing

by Chris Frye

Frye will examine the different types of 3D printing used in the dental industry with a focus on the advantages and disadvantages of each. He also covers how to prepare your laboratory to bring 3D printing in-house and give an in-depth overview of Asiga 3D printers.

### COURSE # C4 – 1:00 P.M. – 2:00 P.M.

CDT/RG: 1 hour of Professional Development Credit  
State of Florida: 1 hour of General Credit

#### Effective Communication for Supervisors

by Jackie Morris

The purpose of this session is to assist supervisors in understanding and implementing the benefits of effective workplace communication. By recognizing obstacles to effective communication and improving overall communications skills, this training will empower managers to conduct more effective meetings, employee counseling sessions, and performance evaluations, which help to effectively manage the overall workplace.

*(This course is open to Owners and Managers only.)*

## REGULATORY STANDARDS / PREVENTION OF MEDICAL ERRORS / LAWS & RULES

### CHOOSE ONE COURSE:

#### COURSE # D1 – 3:30 P.M. - 4:30 P.M.

CDT/RG: 1 hour of Regulatory Standards Credit  
State of Florida: 1 hour of Prevention of Medical Errors Credit

#### Regulatory Compliance: Insurance for Protecting Your Assets!

by Gary Morgan, CDT

Complying with regulatory requirements can seem to be a full-time job for dental lab owners. Keeping on top of OSHA, FDA, HIPAA and state regulations can be difficult, but compliance with these regulations can also be the best insurance for protecting your most valuable assets, your business and employees. This program will provide updates on all these key requirements.

#### COURSE # D2 – 3:30 P.M. - 4:30 P.M.

CDT/RG: 1 hour of Regulatory Standards Credit  
State of Florida: 1 hour of Laws & Rules

#### Florida Laws and Rules Update – A New Approach

by Bennett Napier, CAE

This course will provide information relative to Florida's laws and regulations regarding dental laboratories. This year's presentation is intended to mix it up and material will give attendees an inside look at how the Florida Department of Health staff (at the legislative and Board of Dentistry level) openly work with FDLE on proactive changes to state law and administrative rules that impact the day to day relationship between dental laboratories/technicians and dental offices.

## Building Natural Contour and Emergence in Wax



*Presented by: Thomas Zaleske*

**CDT/RG: 6 hours of Scientific Credit**  
**State of Florida: 6 hours of General Credit**

### Workshop Schedule:

**9:45 a.m. – 11:45 a.m. Hands-on Workshop**  
**12:00 p.m. – 12:45 p.m. FDLA Luncheon** *(included in registration fees)*  
**12:45 p.m. – 4:45 p.m. Hands-on Workshop**

*Sponsored by:*



In order to get the best result while contouring a wax denture base, it is important to not only understand how contour relates to tooth emergence and root position, but also depends on the correct technique, instruments and materials to accomplish the task. Creating an imitation of nature is the goal, but providing a wax-up that projects nature, which also balances being cleansable and provides natural support is the real art.

*This presentation will explain/demonstrate through hands-on and PowerPoint:*

- The instruments best suited for the tasks and how to implement them.
- Wax manipulation.
- Simple colorization of wax to portray value.

- How wax selections effect overall carving.
- Tooth position and imitating contour.
- Contouring is about more than around teeth.
- Being natural vs. being cleansable.
- Tooth shape modification.

### Participants Should Bring:

A preset but unfinished upper 1x14 maxillary, and 1X14 mandibular set-up, not necessarily articulated, favorite wax carving tools, wax of their preference, and a portable light. The goal is to have attendees not only learn the techniques that make a more successful wax-up/case in regard to where and how to place wax and obtain supportive, esthetic and cleansable contours, which adds value for not only conventional but implant retained and supported prosthetics.

*(Note: Pre-registration and additional fees required – Capacity 15. Participants must pre-register by 4/17/2019.)*

*Registration Includes: Friday morning Board Installation, President's Speech & Opening Keynote Address, Friday Only Registration for Hands-on Workshop, Friday Lunch, Friday Night Reception, admission to the Expo on Friday & Saturday.*

## OPTIONAL HANDS-ON WORKSHOP – FRIDAY, MAY 10 & SATURDAY, MAY 11

## Advances in Digital Workflow for Today's Dental Community



*Presented by: Ron Roche*

**CDT/RG: 12 hours of Scientific Credit**  
**State of Florida: 12 hours of General Credit**

**(Special Note: This is a 2-day course, participants must attend both days to understand content and receive course credit.)**

*(Note: Pre-registration and additional fees required – Capacity 15. Participants must pre-register by 4/17/2019.)*

*Registration Includes: Friday morning Board Installation, President's Speech & Opening Keynote Address, Friday Only Registration for Hands-on Workshop, Friday Lunch, Friday Night Reception, Saturday Lunch in expo hall, admission to the Expo on Friday & Saturday and Saturday Regulatory Standards course. (Special Note: This is a 2-day course, so participants must attend both days to understand content and receive course credit.)*

### Workshop Schedule:

#### FRIDAY, MAY 10

**9:45 a.m. – 11:45 a.m. Hands-on Workshop**  
**12:00 p.m. – 12:45 p.m. FDLA Luncheon** *(included in registration fees)*  
**12:45 p.m. – 4:45 p.m. Hands-on Workshop**

#### SATURDAY, MAY 11

**8:00 a.m. – 12:00 p.m. Hands-on Workshop**  
**12:00 p.m. – 1:00 p.m. Lunch & Expo Hall Break** *(included in registration fees)*  
**1:00 p.m. – 3:00 p.m. Hands-on Workshop**

*(continued opposite page)*

## Digital Design for the Production Laboratory — Getting the Most Out of Your Mouse

Sponsored by:



Atwood



Kabot

Presented by: Jason Atwood & Chris Kabot

CDT/RG: 6 hours of Scientific Credit

State of Florida: 6 hours of General Credit

### Hands-On Demonstration/Lecture Schedule:

8:00 a.m. – 10:00 a.m.	3Shape Hands-On Demonstration
10:00 a.m. – 12:00 p.m.	Lecture with Tips & Tricks
12:00 p.m. – 1:00 p.m.	Lunch & Expo Hall Break (included in registration fees)
1:00 p.m. – 3:00 p.m.	exocad Hands-On Demonstration

This course is for the technician using digital design every day or the lab that wants to get started!

### 3Shape Tools That You Are Not Using and Should Be

3Shape is a more powerful tool for designing dental restorations than some people recognize. There is a myriad of tools within the software that many designers don't use on a daily basis. These tools were put there to make designing teeth easier, faster and more predictable. During this section, Jason Atwood will showcase a few tools that many of you may not have known existed; perhaps have never used before, or simply have forgotten they were there. The goal is to help you advance the level of designing done with 3Shape in your lab.

### Lecture with Tips & Tricks

Our lecture will show you some of the most interesting aspects of digital design, implants surgical guides and dentures. Join us to learn where our industry is going!

### exocad-ditive Manufacturing of Digital Dentures

During this session, you will get firsthand experience with designing removable prosthetics with intent to manufacture using today's current 3D printing technologies. Chris Kabot will cover the exocad protocol for designing both monolithic and 2-part try-ins as well as tips and tricks for how to avoid some of the pitfalls out there with 3D printing.

(Note: Participants do not need to bring any items for this workshop.)

(Note: Pre-registration and additional fees required – Capacity 16. Participants must pre-register by 4/17/2019.)

Registration Includes: Saturday Only Registration for Hands-on Workshop, Regulatory Standards Course, Saturday Lunch, admission to the Expo on Saturday.

## OPTIONAL HANDS-ON WORKSHOP – FRIDAY, MAY 10 & SATURDAY, MAY 11

### Advances in Digital Workflow for Today's Dental Community (continued)

Technological advances in digital dentistry are rapidly changing the way the dental team practices in the operator and laboratory. Predictable treatment success depends on comprehensive assessment from both surgical and prosthetic perspectives as well as selection of appropriate implants and custom restorative components.

### Day 1: Advances in Intra-Oral Scanning / Digital Impression Technology

This day will review current technologies in intra-oral scanning, including recent advancements. Users will have the opportunity to get hands-on experience with the latest technology options.

### Day 2: Integrated Surgical & Prosthetic Treatment Planning for Implant Therapy

This course will review recent advances in digital technology: surgical planning software for implant placement, prosthetic design software for digital waxes, and the integration possibilities between the two,

including model-free milled immediate provisionals. Special emphasis will be given to the relationship between the dentist and the lab and the many benefits available to the treatment team when using digital dentistry solutions.

### Learning objectives:

- Understand the data capture requirements for successful digital treatment planning
- Understand the prosthetic design process in the digital world
- Understand the digital implant treatment planning workflow
- Understand the process of integration between the digital prosthetic plan and the surgical plan
- Understand the digital workflow between the dental office and lab

(Note: Participants should bring a PC laptop with them for this workshop.)

Sponsored by:





## HANDS-ON TABLE CLINICS IN EXPO HALL

# BACK BY POPULAR DEMAND!

**F**DLA provides the opportunity to earn CE during the Expo Hall hours. The table clinics will take place in the sponsored island booths during expo hall hours on both Friday, May 10 and Saturday, May 11. The following sponsors will be presenting table clinics in the Expo Hall:



## FDLA MATHESON MEMORIAL GOLF TOURNAMENT

### SHINGLE CREEK GOLF CLUB

9939 Universal Boulevard, Orlando, FL 32819  
407.996.9933 [www.ShingleCreekGolf.com](http://www.ShingleCreekGolf.com)

Sponsored by:



**KULZER**  
MITSUI CHEMICALS GROUP

**Thursday, May 9 • 12:30 p.m. – 5:30 p.m.**

*(Additional registration and fees required.)*

**S**hingle Creek Golf Club presents challenges to players of all levels and has consistently been rated as one of Orlando's best golf courses since opening in 2003. In 2016, the golf club partnered with the renowned Arnold Palmer Design Company to create a new Arnold Palmer Signature Golf Course. The course is known for its large, undulating greens, plush fairways and an abundance of water hazards. Make plans to participate in this great networking opportunity!

#### *Tournament Fees Include:*

- Greens/Cart fees
- Unlimited practice balls
- Boxed lunch for each golfer
- Prizes awarded for top scoring team, longest drive and closest to the pin





## KEYNOTE SPEAKERS

(as of 2/22/19)



### FRIDAY LUNCHEON



### MATHESON MEMORIAL GOLF TOURNAMENT



**KULZER**  
MITSUI CHEMICALS GROUP

### EXPO KICKOFF RECEPTION



**DIGITAL SOLUTIONS**

### FRIDAY NIGHT RECEPTION



### ROOM KEY CARDS



### TRADE SHOW BAGS



### FRIDAY MORNING BREAK



### FRIDAY MID-MORNING BREAK



### SATURDAY MORNING BREAK



### ATTENDEE LANYARDS



## EXHIBITORS

(as of 2/22/19)

3D BioCad

Affordable Dentures & Implants

Aidite (Qinhuangdao) Technology Co., Ltd

Americana Dental, Inc.

Anaxdent North America

Argen Corporation

Aspen Dental

Atlanta Dental Supply

Brasseler USA

Cardinal Rotary Instruments

Dentsply Sirona

Digital Dental

Esthetic Professionals

EvoDent

Garfield Refining Company

GC America Inc.

Ivoclar Vivadent, Inc.

Jensen Dental

Kettenbach

Kulzer

Mastercut Tool Corp

McFatter Technical College

NADL / NBC / FDLT

Nobilium

Nowak Dental

Panthera Dental

PREAT Corporation

Proto3000 Inc.

Renfert USA

Shenzhen Upcera Dental Technologies, Co., Ltd.

Spades Cosmetics

Sterngold

Straumann

TruAbutment Inc.

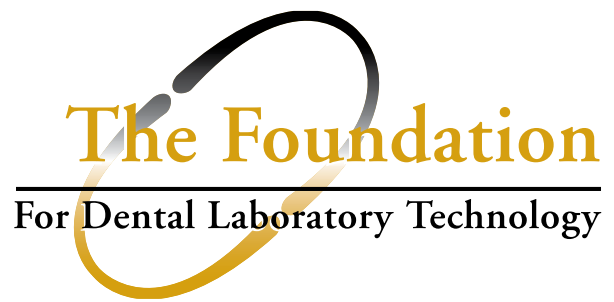
VITA

Whip Mix Corporation

XPdent Corp

Zahn Dental

ZIMMER Biomet Dental



## Join us in Building the Future of Dental Technology

At the 2019 Southern States Symposium & Expo, FDLA will join together with the Foundation for Dental Laboratory Technology to increase awareness of the opportunities for enhancing education in the industry.

The Foundation is a 501(c)(3) educational non-profit created in 2008 to advocate and raise awareness of the necessity of dental laboratory technology education for dental technicians and other effected members of the dental team. The Foundation provides grants and scholarships to interested candidates for advanced education and develops educational programs that are relevant and accessible to both dental technicians working in the laboratory as well as dental laboratory technology students.

### *My Commitment Pledge*

**W**e need your help. Make an investment in the future of your profession by contributing to The Foundation. As a contributor, you will be recognized by having your name listed on our website [www.dentallabfoundation.org](http://www.dentallabfoundation.org), but more importantly, you will carry the knowledge that you made an investment that will positively impact the future of your profession.

### **Donor Information:** (Who and how you want your name recognized. This information may be published.)

(Salutation: ☐ Mr. ☐ Ms. ☐ Mrs. ☐ Dr. ☐ Other \_\_\_\_\_ ) Name \_\_\_\_\_  
☐ CDT ☐ RG ☐ RDT ☐ DDS ☐ DMD ☐ Other: \_\_\_\_\_

Company \_\_\_\_\_ ☐ CDL ☐ DAMAS

Address \_\_\_\_\_

City/State/Zip \_\_\_\_\_

Phone \_\_\_\_\_ Fax \_\_\_\_\_

Email \_\_\_\_\_

### **Payment Method:** (Check one option below)

☐ Please find enclosed check payable to the *Foundation for Dental Laboratory Technology* in the amount of \$ \_\_\_\_\_. (For a one-time donation.)

☐ Please contact me regarding a multi-year contribution.

☐ Please charge my credit card (☐ VISA ☐ MasterCard ☐ AMEX) in the amount of \$ \_\_\_\_\_. (For a one-time donation.)

Card# \_\_\_\_\_ Exp. Date \_\_\_\_\_ Security Code\* \_\_\_\_\_  
\*3-digit number on reverse side of most cards, 4-digit number on front for AMEX only

Cardholder Name \_\_\_\_\_ Phone # \_\_\_\_\_

Billing Address (if different from above) \_\_\_\_\_

Signature \_\_\_\_\_ Date \_\_\_\_\_

*The Foundation for Dental Laboratory Technology is exempt under section 501(c)(3) of the Internal Revenue Code, making your contributions tax-deductible.*

## The Foundation for Dental Laboratory Technology



Introducing

## MEMBERSHIP LEVELS

Get The Best Value  
For Your Dollar



With our new membership levels, you can **COVER ALL OF YOUR EMPLOYEES** as members of FDIA under your laboratory's membership.



The level you choose allows that many employees to **ATTEND OUR ANNUAL SYMPOSIUM, DISTRICT WORKSHOPS, AND OTHER MEETINGS** at the greatly reduced FDIA Member rate.

Each level of membership is designed to **SAVE YOU MONEY** and provide membership benefits to as many employees as you choose to cover.



Your laboratory will be eligible for all of the **MEMBERSHIP BENEFITS** listed on the next page. Each employee under your laboratory's membership will also receive *focus* magazine.



Select Your Level

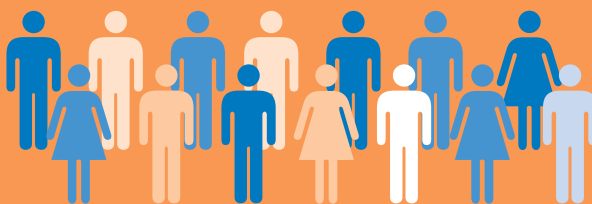
15+  
Members



\$750

Unlimited savings\*

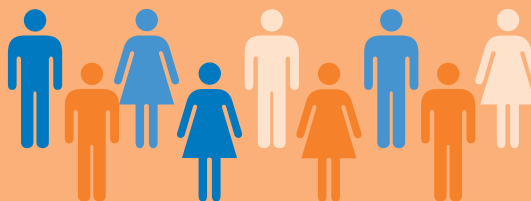
10-14  
Members



\$535

up to  
\$110 savings\*

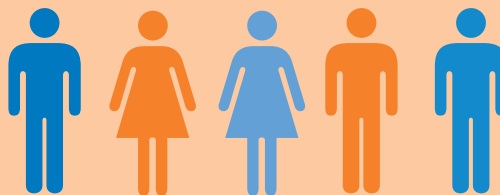
6-9  
Members



\$435

up to  
\$150 savings\*

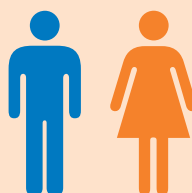
3-5  
Members



\$335

up to  
\$90 savings\*

1-2  
Members



\$235

up to  
\$40 savings\*

\* Estimated savings based on previous discount membership incentive plans.



# Member Benefits



Your membership in the Florida Dental Laboratory Association (FDLA) will bring you a return many times greater than your investment. The association's proven programs provide members with the tools they need to operate their businesses successfully.



## EDUCATION

As the leader of dental laboratory technology continuing education within the state of Florida, we are committed to helping laboratories formulate a business that will grow, meet the requirements mandated by Florida law and help Certified Dental Technicians (CDT) and Certified Dental Laboratories (CDL) maintain their certification. FDLA members are eligible to receive discounted rates on all continuing education.



**District Workshops** – Rotating around the state of Florida, FDLA District Workshops offer laboratory owners and technicians/staff the opportunity to receive continuing education credits year round on a variety of topics including the required “Florida Laws and Rules for Dental Laboratories” course.

**Online Education** – FDLA offers online education, including the mandatory “Florida Laws and Rules for Dental Laboratories” course, on our Website [www.fdma.net](http://www.fdma.net).

**Southern States Symposium & Expo presented by FDLA** – As the largest not for profit dental laboratory meeting in the country, attendees have an opportunity to meet with vendors of dental laboratory products/services to discuss equipment, supplies and techniques that can improve their business. A wide range of technical clinics are scheduled to provide members with the most current industry standards and continuing education.

## LEGISLATIVE/ GOVERNMENT RELATIONS

FDLA works with several agencies to modify and strengthen existing laws affecting dental laboratories and ensure that such regulations strike a balance between patient safety and ease of compliance. FDLA members are provided critical updates and reminders for important legislation, deadlines and regulatory alerts.

**Florida State Laws Affecting Dental Laboratories Manual** – FDLA has developed a manual defining the state laws affecting dental laboratories. This manual explains in detail: continuing education, data required on prescriptions, materials disclosure and point of origin requirements necessary with all communication and case work executed between the dentist and laboratory.

**Continuing Education Requirement** – The state of Florida mandates that each laboratory in Florida must receive 18 hours of Florida approved continuing education credit every two years. FDLA is an approved provider and offers a variety of courses – including the mandatory course on “Florida Laws and Rules for Dental Laboratories.”



## BUSINESS SERVICES

(available to laboratory owners)

### Human Resource Hotline –

The average dental laboratory does not have the workforce or means to hire a human resources manager. Even larger laboratories that have a human resources manager may need some advice on tough situations from time to time. FDLA members receive human resources telephone consultation services **FREE OF CHARGE!**



### Credit Card Payment Processing –

FDLA member laboratories are eligible to receive discounted rates on credit and debit card processing. Our provider specializes in creating card acceptance programs specifically for the dental industry.

## COMMUNICATION

**focus Magazine** – FDLA's quarterly *focus* Magazine is the most widely read state dental laboratory association publication. It provides updates on crucial industry information, new technology, laboratory management and other issues of vital concern. FDLA members receive a complimentary subscription as part of their membership.

**Website** – FDLA's Website, [www.fdma.net](http://www.fdma.net), has comprehensive information on pertinent industry updates as well as conference registration forms, an online directory that enables dentists to look up FDLA member laboratories and other links.







# Florida Dental Laboratory Association Membership Application

Any commercial dental laboratory registered by the State of Florida Department of Health is eligible. Membership shall be in the name of the laboratory as registered by the State of Florida. The owner, partner or designated representative shall represent the laboratory in meetings and is eligible for elective office and voting privileges. Dental laboratories located outside of the state of Florida may join as an Affiliate member using this form.

Name: \_\_\_\_\_ ☐ CDT

Laboratory Name: \_\_\_\_\_ ☐ CDL ☐ DAMAS

Laboratory Owner Name: \_\_\_\_\_ ☐ CDT

Address: \_\_\_\_\_

City: \_\_\_\_\_ State: \_\_\_\_\_ Zip: \_\_\_\_\_

Phone: \_\_\_\_\_ Toll Free: \_\_\_\_\_ Fax: \_\_\_\_\_

E-mail: \_\_\_\_\_ Website: \_\_\_\_\_

Florida Department of Health Laboratory License Number: (if applicable) \_\_\_\_\_

## Payment Information

Total Enclosed: \$ \_\_\_\_\_

☐ Check, payable to FDIA

☐ Visa

☐ MasterCard

☐ AMEX

Card No.: \_\_\_\_\_ Security Code\*: \_\_\_\_\_ Expires: \_\_\_\_\_

\*This is the three digit number found on the back of your card in the signature area. AMEX - This is the four digit number found on the front of your card.

Name as it appears on card: \_\_\_\_\_ Signature: \_\_\_\_\_

Credit Card Billing Address: \_\_\_\_\_

**RETURN APPLICATION TO FDIA** at: 325 John Knox Road Ste L 103, Tallahassee, FL 32303 OR Fax with credit card payment to (850) 222-3019.

Check One: ✓

☐ **1-2 Members: \$235**

☐ **3-5 Members: \$335**

☐ **6-9 Members: \$435**

☐ **10-14 Members: \$535**

☐ **15+ Members: \$750**

## Your Laboratory Members:

Please list the name and email address of your employees based on the membership level you chose.  
(Please note: the primary contact that you listed above will be included in the total count.)

Name: \_\_\_\_\_ Email: \_\_\_\_\_

Name: \_\_\_\_\_ Email: \_\_\_\_\_

Name: \_\_\_\_\_ Email: \_\_\_\_\_

Name: \_\_\_\_\_ Email: \_\_\_\_\_

Name: \_\_\_\_\_ Email: \_\_\_\_\_

Name: \_\_\_\_\_ Email: \_\_\_\_\_

Name: \_\_\_\_\_ Email: \_\_\_\_\_

Name: \_\_\_\_\_ Email: \_\_\_\_\_

Name: \_\_\_\_\_ Email: \_\_\_\_\_

Name: \_\_\_\_\_ Email: \_\_\_\_\_

Name: \_\_\_\_\_ Email: \_\_\_\_\_

Name: \_\_\_\_\_ Email: \_\_\_\_\_

Name: \_\_\_\_\_ Email: \_\_\_\_\_

Name: \_\_\_\_\_ Email: \_\_\_\_\_

Name: \_\_\_\_\_ Email: \_\_\_\_\_

## Or Join as a Student:

Open to any students at Florida schools offering a dental technology program.

☐ **FDIA Student Membership: \$15**

Select Your Level

# HOTEL INFORMATION

## Renaissance Orlando at SeaWorld

The 2019 FDLA Southern States Symposium & Expo will be held at the Renaissance Orlando at SeaWorld, located across from SeaWorld® and adjacent to Aquatica and Discovery Cove. From the moment you step into the resort's lush, tropical landscape, you will feel relaxed and refreshed as you immerse yourself into the flowing, aquatic-themed design. Enjoy modern accommodations, family-friendly amenities and the on-site waterpark R Aqua Zone. Guests can enjoy a cocktail by the pool, pampering treatment at the spa or explore International Drive and much more.

The FDLA has secured a special reduced rate of **\$159** inclusive of the resort fee for FDLA attendees. Also included in your rate are 50% discount on in-room high speed internet, complimentary self-parking and access to 24-hour fitness center. Make your hotel reservations directly with the Renaissance by calling **407.351.5555**. Be sure to mention you are with FDLA and make your reservations by **Wednesday, April 17, 2019** to receive this special reduced rate. NOTE: The association can only reserve a certain number rooms at the discounted rate. Once the room block is sold out, even if that day is prior to the cutoff date, a higher prevailing room rate will apply. Make your reservations today!

*Please continue your support of the FDLA by staying at the host hotel. For more information, visit [www.renaissanceseaworldorlando.com](http://www.renaissanceseaworldorlando.com) to learn more about this wonderful resort!*






### Great Benefits of Staying at the FDLA Host Hotel:

- Special reduced rate of \$159 for FDLA!
- The expo hall is minutes away from your hotel room.
- Increased networking time with attendees in the hotel's restaurants and lounge areas!
- Across the street from SeaWorld Orlando

Need additional information on the 2019 Symposium & Expo? Please visit [www.fdma.net](http://www.fdma.net)

## REGISTRATION INFORMATION AND EXPO POLICIES

### 3 Ways to Register:

-  **ONLINE:** Go to [www.fdma.net](http://www.fdma.net), click on the conference tab, then register online. Use your Master Card, Visa or AMEX.
-  **FAX:** This form with credit card information to (850) 906-0077
-  **MAIL:** Registration Form, **Postmarked by April 17, 2019** to: 2018 Southern States Symposium & Expo (FDLA), 1401 Maclay Commerce Dr., Tallahassee, Florida 32312



**Questions?** For more information, contact FDLA's Southern States Symposium office by phone at 866.873.3352 or email [fdlareg@mcraemeetings.com](mailto:fdlareg@mcraemeetings.com).

**Refund Policy:** Written notification is required for all refunds. Refund requests received by **April 17, 2019** will receive a refund less a \$25 administrative fee. **No refunds will be paid after April 17, 2019.**

**Age Restrictions & Stroller Policy:** No children in strollers or children under the age of 15 will be allowed access into the exhibit hall during booth setup, show hours or during booth dismantling.

**ADA:** If you have special needs that require accommodations, please notify FDLA in writing no later than **April 17, 2019.**

**Southern States Symposium & Expo Dress Code:** The dress code for the 2019 Southern States Symposium & Expo daytime workshops and courses is business casual (no t-shirts, tank tops or flip flops please).

# 2019 SOUTHERN STATES SYMPOSIUM & EXPO REGISTRATION FORM

Please print or type. Please photocopy form for additional registrants. See page 18 for options to register.



First Name: \_\_\_\_\_ Last Name: \_\_\_\_\_

Do you influence purchasing decisions in your lab? ☐ YES ☐ NO ☐ CDT ☐ RG ☐ DDS ☐ DMD ☐ Other: \_\_\_\_\_

State of FL Dental Laboratory/Dentist License Number (if applicable): \_\_\_\_\_ CDT/RG Number (if applicable): \_\_\_\_\_

Laboratory, Dental Practice or Organization: \_\_\_\_\_ ☐ CDL ☐ DAMAS

Address: \_\_\_\_\_

City: \_\_\_\_\_ State: \_\_\_\_\_ Zip: \_\_\_\_\_

Phone: \_\_\_\_\_ E-mail: \_\_\_\_\_

**NOTE: For CDT/RG Registrations, you MUST include your CDT/RG Number to receive CE credits for attending the courses.**

## FULL REGISTRATION – MAY 10 & 11

Includes: Friday Keynote Sessions, Friday Lunch, Friday Night Reception, choice of Saturday courses, Saturday Lunch, unlimited admission to the Expo on Friday and Saturday

- ☐ FDIA Member..... First Member: \$295 (\$325 after 4/17/19)  
☐ Each Additional Member from Same Lab: \$275 (Pre-registration Only)  
☐ CDTs and Dentists.....\$345 (\$375 after 4/17/19)  
☐ Non-Member .....\$575

- ☐ Add Friday Workshop\* .....\$150  
☐ Add Saturday Workshop\* .....\$150

\*(Full Registration Required – Must Pre-register to attend)

Indicate Workshop(s): \_\_\_\_\_

Subtotal Due: \$ \_\_\_\_\_

## FRIDAY ONLY REGISTRATION – MAY 10

Includes: Friday Keynote Sessions, Friday Lunch, Friday Night Reception, choice of Friday courses, unlimited admission to the Expo on Friday and Saturday

- ☐ FDIA Member..... First Member: \$195 (\$225 after 4/17/19)  
☐ Each Additional Member from Same Lab: \$175 (Pre-registration Only)  
☐ CDTs and Dentists.....\$245 (\$275 after 4/17/19)  
☐ Non-Member .....\$450

Subtotal Due: \$ \_\_\_\_\_

## SATURDAY ONLY REGISTRATION – MAY 11

Includes: Choice of Saturday courses, Saturday Lunch, unlimited admission to the Expo on Friday and Saturday

- ☐ FDIA Member..... First Member: \$175 (\$200 after 4/17/19)  
☐ Each Additional Member from Same Lab: \$155 (Pre-registration Only)  
☐ CDTs and Dentists .....\$225 (\$250 after 4/17/19)  
☐ Non-Member .....\$450

Subtotal Due: \$ \_\_\_\_\_

## EXHIBITS ONLY REGISTRATION

(Pass good for entry into Expo either Friday, Saturday or both. Must register and receive a name badge to enter Expo Hall.)

- ☐ FDIA Member..... \$0 No Charge ☐ Non-Member .....\$50

## ADDITIONAL EVENT OPTIONS

- ☐ FDIA Friday Luncheon .....\$35 each ticket  
☐ FDIA Friday Night Reception .....\$50 each ticket  
☐ Saturday Box Lunch .....\$35 each ticket

## GOLF TOURNAMENT – THURSDAY – MAY 9

### FDIA Matheson Memorial Golf Tournament

(See pg. 12 for more details. Must register and pay in advance.)

- ☐ Conference Registrant or Exhibitor.....\$99  
☐ Golf Only.....\$115

Handicap/Estimated Average Score \_\_\_\_\_

Foursome Requests: \_\_\_\_\_

**HANDS-ON WORKSHOPS** You must register in advance by April 17, 2019 for all Hands-on Workshops. Workshops have limited capacities and are on a first-come, first-served basis. Onsite registrations will not be accepted. See pages 10-11 for additional workshop information.

## 6 HR – BUILDING NATURAL CONTOUR AND EMERGENCE IN WAX FRIDAY– MAY 10

Includes: Friday Only Registration for Hands-on Workshop, Friday Lunch, Friday Night Reception, admission to the Expo on Friday and Saturday

- ☐ FDIA Member.....\$250 ☐ Non-Member .....\$325  
☐ CDTs and Dentists.....\$275

## 6 HR – DIGITAL DESIGN FOR THE PRODUCTION LABORATORY - GETTING THE MOST OUT OF YOUR MOUSE SATURDAY– MAY 11

Includes: Saturday Only Registration for Hands-on Workshop, Regulatory Standards Course, Saturday Lunch, admission to the Expo on Saturday

- ☐ FDIA Member.....\$250 ☐ Non-Member .....\$325  
☐ CDTs and Dentists.....\$275

## 12 HR WORKSHOP – ADVANCES IN DIGITAL WORKFLOW FOR TODAY'S DENTAL COMMUNITY MAY 10 & MAY 11

Includes: Friday & Saturday Only Registration for Hands-on Workshop, Friday Lunch, Friday Night Reception, Saturday Lunch, admission to the Expo on Friday and Saturday, Saturday Regulatory Standards Course.

NOTE: This is a 2-day course, participants must attend both days to understand content and receive course credit.

- ☐ FDIA Member.....\$495 ☐ Non-Member .....\$595  
☐ CDTs and Dentists.....\$525

Subtotal Due: \$ \_\_\_\_\_

## Payment:

SUB-TOTAL DUE FOR SYMPOSIUM & EXPO: \$ \_\_\_\_\_

FOUNDATION FOR DENTAL

LABORATORY TECHNOLOGY DONATION: \$ \_\_\_\_\_

TOTAL ENCLOSED: \$ \_\_\_\_\_

☐ Check (payable to FDIA) Check # \_\_\_\_\_

Credit Card: ☐ MC ☐ Visa ☐ AmEx Charge \$ \_\_\_\_\_

CC #: \_\_\_\_\_

Exp: \_\_\_\_\_ Security Code\*: \_\_\_\_\_

Cardholder Signature: \_\_\_\_\_

Print Name: \_\_\_\_\_

Billing Address (if different from above): \_\_\_\_\_

\*The 3 digit number on the back of the card. AMEX: The 4 digit number on the front of your card.

Please refer to page 18 for registration information and expo policies.

For more information, contact FDIA's Southern States Symposium office by phone at 866.873.3352 or email [fdiareg@mcrmeetings.com](mailto:fdiareg@mcrmeetings.com).





2019 Southern States Symposium  
& Expo, presented by FDIA

1401 Maclay Commerce Drive  
Tallahassee, FL 32312  
[www.fdia.net](http://www.fdia.net)

BRINGING THE BASICS

INTO THE **FUTURE**



May 9-11, 2019

Renaissance Orlando at SeaWorld  
Orlando, FL

*Don't miss out on the largest dental laboratory meeting in the Southeastern United States!*

PRESORTED  
STANDARD  
U.S. Postage  
**PAID**  
Pontiac, IL  
Permit #592

