

# MICHIGAN

## Package Contents:

- MI Discrimination
- MI Right to Know MSDS (Hazardous Materials)
- MI Right to Know MSDS Location
- MI Employment Security Act
- MI Whistleblowers' Protection Act
- MI Worker's Compensation
- MIOSHA Job Safety and Health
- MI Know Your Rights
- MI Minimum Wage and Overtime
- MI Paid Sick Leave
- MI No Smoking
- Pay Day Notice
- Emergency Phone Numbers
- Federal Employee Polygraph Protection Act
- Federal Fair Labor Standards Act
- Federal Equal Employment Opportunity
- Federal Occupational Safety and Health Association
- Federal Family Medical Leave Act
- Federal USERRA

## Package Instructions:

1. Print the following PDF files in 8.5 x11 sheets of paper, unless otherwise specified use the color white.
2. The Federal OSHA poster must be printed in an 8 ½ x 14 sheet of paper to be in compliance.
3. Post the printed sheets in a place frequented by employees (i.e. lunch rooms, HR offices, employee lounges).
4. You may also distribute electronic copies of the Labor Law Notices to all relevant workstations in your facility.



**ALL IN ONE POSTER COMPANY, INC.**

1156 N. Gilbert St., Anaheim, CA 92801

P: 714-521-7720 F: 714-521-7728

[www.allinoneposters.com](http://www.allinoneposters.com)

[sales@allinoneposters.com](mailto:sales@allinoneposters.com)

# MICHIGAN LAW

## PROHIBITS DISCRIMINATION

**IN EMPLOYMENT, EDUCATION, HOUSING, PUBLIC  
ACCOMMODATION, LAW ENFORCEMENT OR PUBLIC SERVICE**

### **BASED ON**

religion, race, color, national origin, sex,  
disability, age<sup>1</sup>, marital status<sup>1</sup>, height<sup>2</sup>, weight<sup>2</sup>,  
arrest record<sup>2</sup>, genetic information<sup>2</sup>, and  
familial status<sup>3</sup>

Persons with disabilities needing accommodations for employment  
must notify their employers in writing within 182 days.

*<sup>1</sup> Under the education article, age and marital status  
are prohibited considerations for admissions only*

*<sup>2</sup> in employment only*

*<sup>3</sup> in housing only*

If you think you have been  
**discriminated** against, you  
may file a **complaint** with  
the Michigan Department  
of Civil Rights.

**Call 1-800-482-3604**  
**Video Phone: 313-437-7035**  
**[www.michigan.gov/mdcr](http://www.michigan.gov/mdcr)**



Post in a conspicuous place.

# ***This Workplace Covered by the Michigan Right To Know Law***



Employers must make available for employees in a readily accessible manner, Safety Data Sheets (SDS) for those hazardous chemicals in their workplace.

Employees cannot be discharged or discriminated against for exercising their rights including the request for information on hazardous chemicals.

Employees must be notified and given direction (by employer posting) for locating Safety Data Sheets and the receipt of new or revised SDS(s).

When the employer has not provided a SDS, employees may request assistance in obtaining SDS from the:

Michigan Department of Licensing and Regulatory Affairs  
Michigan Occupational Safety and Health Administration  
General Industry Safety and Health Division  
(517) 284-7750  
Construction Safety and Health Division and Asbestos Licensing  
(517) 284-7680  
[www.michigan.gov/miosha](http://www.michigan.gov/miosha)  
MIOSHA/CET #2105 (Rev. 05/18)



**LARA**  
**LICENSING AND REGULATORY AFFAIRS**  
CUSTOMER DRIVEN. BUSINESS MINDED.

## **SDS(s) For This Workplace Are Located At**

---

Location(s)

---

Location(s)

---

Person(s) responsible for SDS(s)

---

Phone

*LARA is an equal opportunity employer/program.*

***As Required by the  
Michigan  
Right To  
Know Law***



**TO BE POSTED THROUGHOUT THE  
WORKPLACE NEXT TO THE SAFETY DATA SHEETS (SDS)  
LOCATION POSTERS**

# **New or Revised SDS**

**New or Revised**

**Receipt Date**

**Posting Date**

**Location of New or  
Revised SDS**

---

---

---

---

---

---

---

---

---

---

---

---

---

---

---

---

---

---

---

---

---

---

---

---

---

---

---

---

---

---

---

---



Michigan Department of Licensing and Regulatory Affairs  
Michigan Occupational Safety and Health Administration  
Consultation Education and Training Division  
(517) 284-7720

Paid in part with  
Federal OSHA funds.  
MIOSHA/CET #2106 (Revised 05/18)

***LARA is an equal opportunity employer/program.***



For further information visit our website at:  
[www.michigan.gov/miosha](http://www.michigan.gov/miosha)

# ***Notice To All Employees:***

# ***Information about***

# ***Unemployment Benefits***

This employer is covered by the

## **MICHIGAN EMPLOYMENT SECURITY ACT**

Unemployment benefits are payable to qualified and eligible workers of this employer through Michigan's Talent Investment Agency, Unemployment Insurance.

### **How to file an unemployment claim**

If you become unemployed, you can file your new unemployment claim or reopen an established claim:

***Online through the Michigan Web Account Manager (MiWAM) at [michigan.gov/uia](http://michigan.gov/uia)***

***By Phone - call the Unemployment Insurance toll free claims line: 1-866-500-0017***

***Payment Options:*** *When you file for unemployment benefits, you will choose how you want to receive your benefit payments. You can select a **debit card or direct deposit** into your checking or savings account. For more information about these payment options, visit [michigan.gov/uia](http://michigan.gov/uia).*

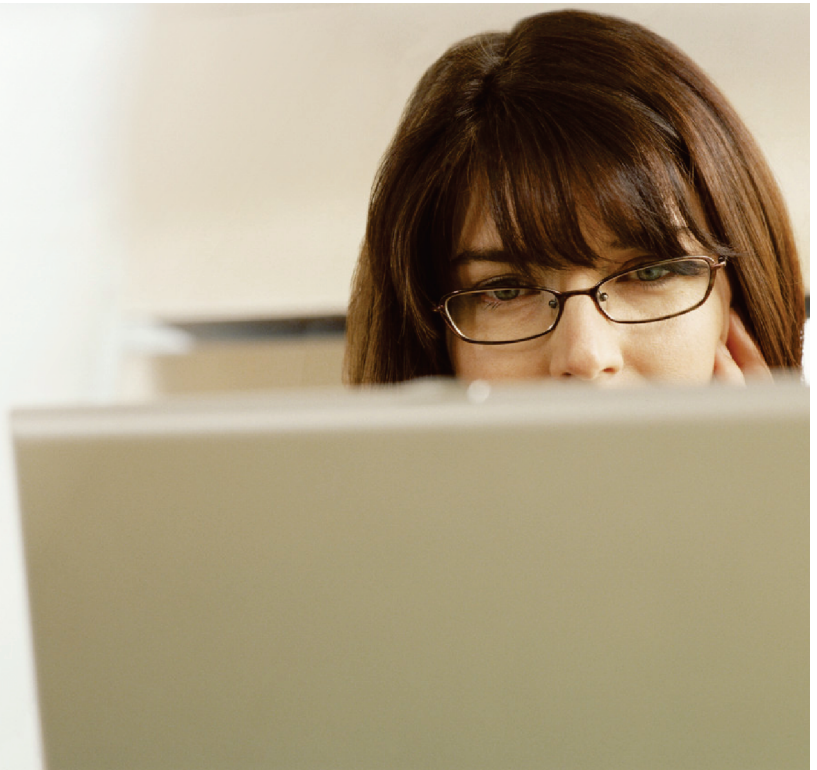


**STATE OF MICHIGAN  
TALENT INVESTMENT AGENCY  
UNEMPLOYMENT INSURANCE**

TIA is an equal opportunity employer/program. Auxiliary aids, services and other reasonable accommodations are available upon request to individuals with disabilities.

Michigan Department of Talent and Economic Development,  
Talent Investment Agency, Unemployment Insurance; Authority: Michigan  
Administrative Code, Section R 421.105; Paid for with federal funds.

UIA 1710  
(Rev. 09-17)



# ATTENTION EMPLOYEES

**The Michigan Whistleblowers' Protection Act (469 P .A. 1980) creates certain protections and obligations for employees and employers under Michigan law.**

## **PROTECTIONS:**

It is illegal for employers in Michigan to discharge, threaten or otherwise discriminate against you regarding your compensation, terms, conditions, location or privileges of employment because you or a person acting on your behalf reports or is about or report a violation or a suspected violation of federal, state or local laws, rules or regulations to a public body.

It is illegal for employers in Michigan to discharge, threaten or otherwise discriminate against you regarding your compensation, terms, conditions, location or privileges of employment because you take part in a public hearing, investigation, inquiry or court action.

## **OBLIGATIONS:**

The Act does not diminish or impair either your rights or the rights of your employer under any collective bargaining agreement.

The Act does not require your employer to compensate you for your participation in a public hearing, investigation, inquiry or court action.

The Act does not protect you from disciplinary action if you make a report to a public body that you know is false.

## **ENFORCEMENT:**

If you believe that your employer has violated this Act you may bring civil action in circuit court within 90 days of the alleged violation of the Act.

## **PENALTIES:**

Persons found in violation of this Act may be subject to a civil fine of up to \$500.00.

If your employer has violated this Act the court can order your reinstatement, the payment of back wages, full reinstatement of fringe benefits and seniority rights, actual damages, or any combination of these remedies. The court may also award all or a portion of the costs of litigation, including reasonable attorney fees and witness fees to the complainant if the court believes such an award is appropriate.

This poster is provided as a courtesy of the Michigan Occupational Safety and Health Administration (MIOSHA). Visit our website at [www.michigan.gov/miosha](http://www.michigan.gov/miosha).

# Michigan Workers' Disability Compensation Rights & Responsibilities

Each party involved in the workers' compensation system has rights and responsibilities that help ensure the successful application of the law, and ultimately a safe return to work for the employee.

## EMPLOYEES

- **Report all injuries to your supervisor immediately!**
- Most workers are covered under workers' compensation from the start of employment.
- Benefits include reasonable & necessary medical care, wage loss benefits, and vocational rehabilitation services.
- A compensable injury is one that has arisen "out of and in the course of employment." In other words, work must cause the disability.
- Workers' compensation is the "exclusive remedy" for work injuries, meaning that in most cases you cannot sue for other damages.
- There is a 7-day waiting period for wage loss benefit payments. If the disability lasts beyond one week, the worker is entitled to benefits as of the eighth day after the injury. If a disability continues for two weeks or longer, then the worker is entitled to be paid compensation for the first week of disability from the date of disablement. Paid medical leave may apply during the 7-day waiting period.
- There is no waiting period for medical benefits; coverage begins at the time of the injury.
- In most cases, wage loss benefits are calculated by taking the average of the highest 39 weeks of the last 52 weeks of gross wages prior to injury. Generally, you should receive 80% of the after-tax value of this average.
- Your first check is due and payable on the 14<sup>th</sup> day of disability. However, a benefit check is not considered "late" until 30 days after the due date.
- Weekly benefits continue so long as you are disabled, which could be for the rest of your life. However, benefits can be reduced by up to 50% after age 65 at 5% per year up to age 75, or upon receipt of social security retirement benefits.
- If you are only partially disabled, you do have a duty to seek reasonably available work, taking into consideration those limitations (restrictions) from the work-related personal injury or disease.
- If you have **more than one job** covered under the Worker's Disability Compensation Act, you get credit for all wages earned in those jobs.
- **Medical Benefits:** You are entitled to all reasonable and necessary medical care including surgical, hospital, and dental services, as well as crutches, hearing apparatus, chiropractic treatment, and nursing care. These services are provided indefinitely as long as there is a need related to the injury.
- **Choosing A Doctor:** During the first 28 days of treatment, the employer has the right to choose the doctor. After that, you are free to change doctors providing that you notify the employer and insurance company, preferably in writing. You do not need authorization from the insurance company or the employer to be medically treated, as long as the treatment is reasonable and necessary, and your claim is not in dispute.
- **Maintaining Contact:** It is extremely important that you maintain regular contact with your employer throughout the treatment and recovery period so that they are aware of your progress. Provide your employer with updated work status reports and discuss early return to work options.
- **Vocational Rehabilitation:** If you have a work-related injury or illness which prevents you from being able to perform work for which you have previous training or experience, you are entitled to vocational rehabilitation benefits. Vocational rehabilitation can include a variety of professional services designed to help injured workers re-enter the workforce. These services may include job placement assistance, retraining support, or guidance in starting your own business. Vocational rehabilitation services are paid for by the employer/insurance carrier, so in most cases you must have an open workers' compensation claim to receive rehabilitation benefits.
- You may also be eligible for Family Medical Leave Act (FMLA) benefits. If you have questions, you should contact the U.S. Department of Labor.

## EMPLOYERS

- **Stay in touch with your employees while they are off work!** Look for appropriate light-duty work options and accommodations when possible.
- All public and most private employers in Michigan are covered by workers' compensation. Every employer subject to the Act must provide proof of insurance or be approved for self-insurance to ensure benefits can be paid to its workers should they become injured.
- Eligible employees are covered under workers' compensation from the date of employment.
- There are severe penalties if an employer fails to provide workers' compensation coverage.

## EMPLOYER REPORTING

- **All claims must be reported to your insurance carrier.**
- **Form WC-100:** must be filed with the Workers' Compensation Agency (WCA) and your insurance carrier immediately upon the disability exceeding 7 consecutive days, death or specific loss. A copy of this form must also be given to the employee.
- You must ensure that reasonable and necessary medical treatment is provided promptly.
- You will need to provide a wage history report to the insurance carrier in order to calculate the correct benefit amount.
- **Minors:** The Act provides that an illegally employed minor is entitled to double compensation if injured.

## INSURANCE COMPANIES

- **Prompt and regular payment of benefits is required by law.**
- **Form WC-701:** Must be filed with the WCA when wage loss benefits begin, change or stop.
- **Form WC-110:** Must be filed with the WCA 3 months post-injury, and every 4 months after, to report on vocational rehabilitation activity.
- **Form WC-107:** Must be filed with the WCA if a claim is disputed.
- Medical services rendered are subject to the State of Michigan Health Care Services Rules and Fee Schedule.
- Injured workers are not to be "balance billed" for charges over and above the fee schedule.
- Benefits are not to be stopped for non-cooperation with vocational rehabilitation; a hearing must be requested prior to stoppage.

**For more information contact: State of Michigan Workers' Compensation Agency  
Toll free: 1-888-396-5041, or visit our website at [www.michigan.gov/wca](http://www.michigan.gov/wca)**



# MICHIGAN SAFETY AND HEALTH PROTECTION ON THE JOB

## THE MICHIGAN OCCUPATIONAL SAFETY AND HEALTH ACT, 1974 P.A. 154, AS AMENDED, REQUIRES POSTING OF THIS DOCUMENT IN A CENTRAL AND CONSPICUOUS LOCATION. FAILURE TO DO SO MAY RESULT IN A PENALTY

The Michigan Occupational Safety and Health Act (MIOSH Act), Act No. 154 of the Public Acts of 1974, as amended, provides job safety and health protection for Michigan employees through the maintenance of safe and healthful working conditions. Under the MIOSH Act and a state plan approved in September 1973 by the U.S. Department of Labor, the Michigan Department of Licensing and Regulatory Affairs is responsible for administering the Act. Department representatives conduct job site inspections and investigations to ensure compliance with the Act and with safety and health standards.

The contents of this poster describe many important provisions of the Act. These provisions apply equally to employers and employees in either private industry or the public sector.

**EMPLOYER REQUIREMENTS:** MIOSHA requires that each employer:

1. Furnish to each employee employment and a place of employment which is free from recognized hazards that are causing or are likely to cause death or serious physical harm to the employee.
2. Comply with promulgated rules and standards and with orders issued pursuant to the Act.
3. Post this and other notices and use other appropriate measures to keep his or her employees informed of their protection and obligations under the Act, including the provisions of applicable rules and standards.
4. Notify the Michigan Department of Licensing and Regulatory Affairs within 8 hours of any work-related

fatality. Notification may be accomplished by calling 1-800-858-0397.

5. Notify the Michigan Department of Licensing and Regulatory Affairs within 24 hours of all work-related inpatient hospitalizations, amputations and losses of an eye. Notification may be accomplished by calling 1-844-464-6742 (4MIOSHA).
6. Make available to employees, for inspection and copying, all medical records and health data in the employer's possession pertaining to that employee.
7. Afford an employee an opportunity with or without compensation to attend all meetings between the Department of Licensing and Regulatory Affairs and the employer relative to any appeal of a citation by the employer.
8. Give the representative of employees the opportunity to accompany the department during the inspection or investigation of a place of employment and to prohibit the suffering of any loss of wages or fringe benefits or discriminate against the representative of employees for time spent participating in the inspection, investigation, or opening and closing conferences.
9. Provide personal protective equipment, at the employer's expense, when it is specifically required by a MIOSHA standard.
10. Not permit an employee, other than an employee whose presence is necessary to avoid, correct or remove an imminent danger, to operate equipment or engage in a process which has been tagged by the Department and which is the subject of an order issued

by the Department identifying that an imminent danger exists.

11. To promptly notify an employee who was or is being exposed to toxic materials or harmful physical agents in concentrations or at levels which exceed those prescribed by a MIOSHA standard.

**EMPLOYEE REQUIREMENTS:** MIOSHA requires that each employee:

1. Comply with promulgated rules and standards and with orders issued pursuant to the Act.
2. Not remove, displace, destroy, or carry off a safeguard furnished or provided for use in a place of employment, or interfere in any way with the use thereof by any other person.

**INSPECTIONS/INVESTIGATIONS:** Inspections and investigations are conducted by trained personnel. The Act requires that an employer representative and a representative of employees be given an opportunity to accompany the department representative for the purpose of aiding in the inspection or investigation.

If a representative of employees does not participate, the department representative will consult with a number of employees concerning matters of safety or health in the place of employment.

**COMPLAINTS:** Employees and employee representatives who believe that an unsafe or unhealthful condition exists in their workplace have the right to request an inspection by giving



written notice to the Department of Licensing and Regulatory Affairs. If a condition exists which may present an immediate danger, the Department should be notified in the most expedient manner without regard to a written notice. The names of complainants will be kept confidential and not revealed upon the request of the employee. Employees also have the right to bring unsafe or unhealthful conditions to the attention of the department representative during the conduct of an inspection or investigation.

The Act provides that employees may not be discharged or in any manner discriminated against for filing a complaint or exercising any of their rights under the Act. An employee who believes he or she has been discriminated against may file a complaint with the Michigan Department of Licensing and Regulatory Affairs within 30 days of the alleged discrimination.

The U.S. Department of Labor is monitoring the operation of the Michigan Occupational Safety and Health Administration (MIOSHA) to assure the effective administration of the state act. Any person may make a written complaint regarding the state administration of the state act directly to the Regional Office of OSHA, 230 South Dearborn, Chicago, Illinois 60604.

**CITATIONS:** If upon inspection or investigation the Department of Licensing and Regulatory Affairs believes that a requirement of the Act has been violated, a citation alleging such violation and setting a time period for correction will be issued to the employer. The citation must be prominently posted at or near the

place of the alleged violation for three days or until the violation is corrected, whichever is later.

The Act provides for first instance penalties of up to \$7,000 for a violation. Penalties of up to \$7,000 per day may be assessed for failure to correct a violation within a proposed abatement period. Any employer who willfully or repeatedly violates the Act may be assessed penalties of up to \$70,000 for each such violation. Employers may appeal the alleged citation, the proposed penalties or the abatement periods to the Department and to the Board of Health and Safety Compliance and Appeals. Employees may appeal the abatement period in a similar manner. Employees also may appeal to the Board of Health and Safety Compliance and Appeals any decision issued by the Department in response to an employer appeal.

Criminal penalties also are provided for in the Act. A person who knowingly makes a false statement or report pursuant to the Act upon conviction is punishable by a fine of up to \$10,000 or may be imprisoned for not more than 6 months or both. Any willful violation resulting in death of an employee, upon conviction, is punishable by a fine of up to \$10,000 or by imprisonment for not more than one year or both. A second conviction doubles the maximum monetary penalty and is punishable by imprisonment for up to three years.

**VOLUNTARY ACTIVITY & COMPLIANCE ASSISTANCE:**

The act encourages employers and employees to reduce

workplace hazards voluntarily.

The Michigan Department of Licensing and Regulatory Affairs offers limited on-site consultation assistance to employers to assist them in achieving compliance with occupational safety and health standards. Training specialists are available and can give advice on the correction of hazardous conditions and on the development of safety and health systems. Department staff are available to conduct seminars and training relative to occupational safety and health for both employer and employee groups. Requests for service should be addressed to the department at the address shown below.

The U.S. Department of Labor will continue to enforce federal standards governing maritime operations of long shoring, shipbuilding, ship breaking and ship repairing. These issues are not covered by the Michigan Plan for Occupational Safety and Health. The U.S. Department of Labor will continue to enforce federal standards governing maritime operations of long shoring, shipbuilding, ship breaking and ship repairing. These issues are not covered by the Michigan Plan for Occupational Safety and Health.

**MORE INFORMATION:**

Department of Licensing and Regulatory Affairs  
Michigan Occupational Safety & Health Administration  
525 W. Allegan Street, Box 30643  
Lansing, Michigan 48909-8143  
[www.michigan.gov/miosha](http://www.michigan.gov/miosha)

**THIS IS AN IMPORTANT DOCUMENT - DO NOT COVER!**



MIOSHA Complaint Hotline.....	1-800-866-4674
Fatality Hotline.....	1-800-858-0397
MIOSHA Injuries/Illnesses Reporting.....	1-844-464-6742
Consultation and Training Assistance.....	1-517-284-7720

The Department of Licensing and Regulatory Affairs will not discriminate against any individual or group because of race, sex, religion, age, national origin, color, marital status, disability, or political beliefs. If you need assistance with reading, writing, hearing, etc., under the Americans with Disabilities Act, you may make your need known to this agency.  
(10,000 copies printed at \$705.54 or \$0.07 per copy.)



## ***Employees -- Know Your Rights!***

- **Remember - It is important to report your injury to your employer.**

- **Medical Care**

You are entitled to reasonable and necessary medical care for work-related injuries or diseases. Employers or their insurance carriers are required by law to provide these services. During the first 28 days of treatment, your employer has the right to choose the physician. After 28 days you are free to change physicians, but you must notify your employer of the change. If you receive treatment from a physician of your choice, you shall obtain and promptly furnish a report to your employer.

If your employer refuses to provide medical care, you should contact Michigan's Workers' Compensation Agency at its toll-free telephone number: **1-888-396-5041**.

You should not receive a bill from a health care provider for treatment of a covered work-related injury or illness. If you do receive such a bill, you should contact your employer or the employer's insurance carrier.

- **Wage Loss Benefits**

You are entitled to weekly workers' compensation benefits if you suffer a wage loss for more than seven consecutive days. These benefits may be claimed as long as a disability and wage loss continue. Generally, the benefit rate is 80% of your after-tax average weekly wage, subject to a maximum rate.

- **Vocational Rehabilitation**

If you are unable to perform the work that you have done previously, you are entitled to vocational rehabilitation. The number one goal is your return to work with your employer. If you cannot do this or require assistance in finding a new job, vocational rehabilitation services can help.

*To be completed by the employer*

<hr/>
Employer Name
<hr/>
Employer Contact Person and Telephone Number
<hr/>
Workers' Compensation Insurance Carrier Name

If you have questions, please call the  
State of Michigan Workers' Compensation Agency  
**Toll-free 1-888-396-5041**

Additional information is on the agency's website at [www.michigan.gov/wca](http://www.michigan.gov/wca).

**EMPLOYER: PLEASE POST THIS NOTICE FOR YOUR EMPLOYEES TO SEE!**



# Michigan Department of Licensing and Regulatory Affairs

## Wage and Hour Division

PO Box 30476

Lansing, MI 48909-7976

### REQUIRED POSTER

### GENERAL REQUIREMENTS - MINIMUM WAGE and OVERTIME



GRETCHEN WHITMER  
GOVERNOR

ORLENE HAWKS  
DIRECTOR

#### Coverage

The Improved Workforce Opportunity Wage Act (IWOWA), Public Act 337 of 2018, as amended, covers employers who employ 2 or more employees 16 years of age and older.

#### Minimum Hourly Wage Rate

Employees must be paid at least:

Effective Date	Minimum Hourly Wage Rate	Tipped Employee		85%** Hourly Rate
		Minimum Hourly Rate	Reported Average Hourly Tips	
January 1, 2018	\$9.25	\$3.52	\$5.73	\$7.86
March 29, 2019	\$9.45	\$3.59	\$5.86	\$8.03
January 1, 2020*	\$9.65	\$3.67	\$5.98	\$8.20
January 1, 2021*	\$9.87	\$3.75	\$6.12	\$8.39

\*An increase in the minimum hourly wage rate as prescribed in subsection (1) does not take effect if the unemployment rate for this state, as determined by the Bureau of Labor Statistics, United States Department of Labor, is 8.5% or greater for the calendar year preceding the calendar year of the prescribed increase. An increase in the minimum hourly wage rate as prescribed in subsection (1) that does not take effect pursuant to this subsection takes effect in the first calendar year following a calendar year for which the unemployment rate for this state, as determined by the Bureau of Labor Statistics, United States Department of Labor, is less than 8.5%.

► \*\* Minors 16-17 years of age may be paid 85% of the minimum hourly wage rate.

#### Training Wage

A training wage of \$4.25 per hour may be paid to employees 16 to 19 years of age for the first 90 days of employment.

#### Overtime

Employees covered by the IWOWA must be paid 1-1/2 times their regular rate of pay for hours worked over 40 in a 7-day workweek. The following are exempt from overtime requirements: employees exempt from the minimum wage provisions of the Fair Labor Standards Act of 1938, 29 USC 201 to 219 (except certain domestic service employees), professional, administrative, or executive employees; elected officials and political appointees; employees of amusement and recreational establishments operating less than 7 months of the year; agricultural employees, and any employee not subject to the minimum wage provisions of the act.

#### Compensatory Time

If an employer meets certain conditions, employees may agree to receive compensatory time of 1-1/2 hours for each hour of overtime worked. The agreement must be voluntary, in writing, and obtained before the compensatory time is earned. All compensatory time earned must be paid to an employee. Accrued compensatory time may not exceed 240 hours. Employers must keep a record of compensatory time earned and paid. Contact the Wage and Hour Division for information on the conditions an employer must meet in order to offer compensatory time off in lieu of overtime compensation.

#### Equal Pay

An employer shall not discriminate on the basis of sex by paying employees a rate which is less than the rate paid to employees of the opposite sex for equal work on jobs requiring equal skill, effort, and responsibility performed under similar working conditions - except where payment is pursuant to a seniority system, merit system or system measuring earnings on the basis of quantity or quality of production or a differential other than sex.

#### Enforcement

An employee may either file civil action for recovery of unpaid minimum wages or overtime, or they may file a complaint with the Department of Licensing and Regulatory Affairs. The department may investigate a complaint and file civil action to collect unpaid wages or overtime due the employee and all employees of an establishment. Recovery under this act can include unpaid minimum wages or overtime, plus an equal additional amount as liquidated damages, costs, and reasonable attorney fees. A civil fine of \$1,000 can be assessed to an employer who does not pay minimum wage or overtime.

LARA is an equal opportunity employer/program.

Auxiliary aids, services and other reasonable accommodations are available, upon request, to individuals with disabilities.

[www.michigan.gov/wagehour](http://www.michigan.gov/wagehour) • Toll Free 1-855-4MI-WAGE (1-855-464-9243)

WHD 9904 (Revised • 1/2019)



GRETCHEN WHITMER  
GOVERNOR

## Michigan Department of Licensing and Regulatory Affairs

Wage and Hour Division

PO Box 30476

Lansing, MI 48909-7976

REQUIRED POSTER

### GENERAL REQUIREMENTS – PAID MEDICAL LEAVE ACT\*



ORLENE HAWKS  
DIRECTOR

#### Coverage

The Paid Medical Leave Act, 2018 Public Act 338, as amended by 2018 Public Act 369, effective March 29, 2019, covers employers who employ 50 or more individuals. The act covers individuals engaged in service to an employer in the business of the employer and from whom an employer is required to withhold for federal income tax purposes. An eligible employee does not include executive, administrative, and professional overtime exempt employees, employees covered by a private collective bargaining agreement that is in effect, employees of the United States government, another state, or a political subdivision of another state, individuals whose primary work location is not in this state, individuals 16-19 years of age being paid the youth training wage in accordance with the Improved Workforce Opportunity Wage Act, temporary employees as described in the Michigan Employment Security Act, variable hour employees as defined by 26 CFR 54.4980H-1, employees covered by the Railway Labor Act and Railroad Unemployment Insurance Act, individuals employed by an employer for 25 weeks or fewer in a calendar year for a job scheduled for 25 weeks or fewer, individuals who worked, on average, fewer than 25 hours per week during the immediately preceding calendar year. (See section 2 of The Paid Medical Leave Act, 2018 Public Act 338.)

#### Paid Medical Leave Accrual

Paid medical leave accrual begins on March 29, 2019, or upon commencement of the employee's employment, whichever is later. Paid medical leave is accrued at a rate of 1 hour for every 35 actual hours worked; however, an employer is not required to allow accrual of over 1 hour in a calendar week or more than 40 hours in a benefit year. A benefit year is any consecutive 12-month period used by an employer to calculate an eligible employee's benefits. Employees can carry over up to 40 hours of unused accrued paid medical leave from one benefit year to the next; however, employers are not required to allow employees to use more than 40 hours in a single benefit year. An employer may provide the total amount of paid medical leave all at once by providing at least 40 hours at the beginning of the benefit year or on the date that the individual becomes eligible during the benefit year on a prorated basis. If an employer adopts this practice, it does not have to permit employees to carry over unused leave to the next benefit year. (See section 3 of the Paid Medical Leave Act, 2018 Public Act 338.)

#### Paid Medical Leave Usage

An employee may use paid medical leave as it is accrued except an employer may require an employee to wait until the 90<sup>th</sup> calendar day after commencing employment before using accrued paid medical leave. Paid medical leave must be used in 1-hour increments unless the employer has a different increment policy set forth in writing in an employee handbook or other employee benefit document. Employees must follow the employer's usual and customary notice, procedural, and documentation requirements for requesting leave. The employee must be allowed at least 3 days to provide documentation. Employees may take paid medical leave for any of the following:

- Physical or mental illness, injury, or health condition of the employee or his or her family member
- Medical diagnosis, care, or treatment of the employee or employee's family member
- Preventative care of the employee or his or her family member
- Closure of the employee's primary workplace by order of a public official due to a public health emergency
- The care of his or her child whose school or place of care has been closed by order of a public official due to a public health emergency
- The employee's or his or her family member's exposure to a communicable disease that would jeopardize the health of others as determined by health authorities or a health care provider

For domestic violence and sexual assault situations, employees may use paid medical leave for any of the following:

- Medical care or psychological or other counseling
- Receiving services from a victim services organization
- Relocation and obtaining legal services
- Participation in civil or criminal proceedings related to or resulting from the domestic violence or sexual assault

#### Employee Rights

An employee may file a complaint with the Department of Licensing and Regulatory Affairs within 6 months of the alleged violation. LARA shall investigate a complaint and attempt mediation, where appropriate.

#### Penalties

If informal resolution is unsuccessful and a violation found, payment of paid medical leave improperly withheld will be requested and penalties may be imposed. An employer who fails to provide paid medical leave is subject to an administrative fine of not more than \$1,000.00. An employer who willingly violates the posting requirement is subject to an administrative fine of not more than \$100.00 for each separate violation.

**\*For precise language of the statute, see Public Act 338 of 2018, as amended**

LARA is an equal opportunity employer/program.

Auxiliary aids, services and other reasonable accommodations are available, upon request, to individuals with disabilities.

[www.michigan.gov/wagehour](http://www.michigan.gov/wagehour) • Toll Free 1-855-4MI-WAGE (1-855-464-9243)

WHD 9911 (Revised • 1/2019)

# MICHIGAN NO SMOKING



## NO SMOKING

Effective May 1, 2010, Michigan PA 188 of 2009 will prohibit smoking in places of employment in the State of Michigan with the exception of certain businesses such as casinos, cigar bars, home offices, etc. "No Smoking" signs must be posted at the entrance of every building where smoking is prohibited.



POSTER COMPANY, INC.

**1-800-273-0307**

[www.allinoneposters.com](http://www.allinoneposters.com)

All rights reserved.

Copyright ©2010 by: All In One Poster Company, Inc.

# PAY DAY NOTICE

Regular Pay Days for Employees of \_\_\_\_\_  
(Firm Name)

shall be as follows:

\_\_\_\_\_ Weekly    \_\_\_\_\_ Bi-Weekly    \_\_\_\_\_ Semi Monthly    \_\_\_\_\_ Monthly

Pay Checks will be distributed at

\_\_\_\_\_  
(Place of Distribution)

**This is in accordance with Michigan State Law**

By \_\_\_\_\_ Title \_\_\_\_\_

---

## EMERGENCY PHONE NUMBERS

**For**

\_\_\_\_\_  
(Please Give Exact address of This Worksite Location)

**Physicians:** \_\_\_\_\_

**Hospitals:** \_\_\_\_\_

**Ambulances: 911 or** \_\_\_\_\_

**Fire Department 911 or:** \_\_\_\_\_

**Police: 911 or** \_\_\_\_\_

**PLEASE POST IN A CONSPICUOUS LOCATION**



# EMPLOYEE RIGHTS

## EMPLOYEE POLYGRAPH PROTECTION ACT

**The Employee Polygraph Protection Act prohibits most private employers from using lie detector tests either for pre-employment screening or during the course of employment.**

### PROHIBITIONS

Employers are generally prohibited from requiring or requesting any employee or job applicant to take a lie detector test, and from discharging, disciplining, or discriminating against an employee or prospective employee for refusing to take a test or for exercising other rights under the Act.

### EXEMPTIONS

Federal, State and local governments are not affected by the law. Also, the law does not apply to tests given by the Federal Government to certain private individuals engaged in national security-related activities.

The Act permits polygraph (a kind of lie detector) tests to be administered in the private sector, subject to restrictions, to certain prospective employees of security service firms (armored car, alarm, and guard), and of pharmaceutical manufacturers, distributors and dispensers.

The Act also permits polygraph testing, subject to restrictions, of certain employees of private firms who are reasonably suspected of involvement in a workplace incident (theft, embezzlement, etc.) that resulted in economic loss to the employer.

The law does not preempt any provision of any State or local law or any collective bargaining agreement which is more restrictive with respect to lie detector tests.

### EXAMINEE RIGHTS

Where polygraph tests are permitted, they are subject to numerous strict standards concerning the conduct and length of the test. Examinees have a number of specific rights, including the right to a written notice before testing, the right to refuse or discontinue a test, and the right not to have test results disclosed to unauthorized persons.

### ENFORCEMENT

The Secretary of Labor may bring court actions to restrain violations and assess civil penalties against violators. Employees or job applicants may also bring their own court actions.

**THE LAW REQUIRES EMPLOYERS TO DISPLAY THIS POSTER WHERE EMPLOYEES AND JOB APPLICANTS CAN READILY SEE IT.**



WAGE AND HOUR DIVISION  
UNITED STATES DEPARTMENT OF LABOR

1-866-487-9243  
TTY: 1-877-889-5627  
[www.dol.gov/whd](http://www.dol.gov/whd)



# EMPLOYEE RIGHTS UNDER THE FAIR LABOR STANDARDS ACT

## FEDERAL MINIMUM WAGE

**\$7.25** PER HOUR  
BEGINNING JULY 24, 2009

The law requires employers to display this poster where employees can readily see it.

**OVERTIME PAY** At least 1½ times the regular rate of pay for all hours worked over 40 in a workweek.

**CHILD LABOR** An employee must be at least 16 years old to work in most non-farm jobs and at least 18 to work in non-farm jobs declared hazardous by the Secretary of Labor. Youths 14 and 15 years old may work outside school hours in various non-manufacturing, non-mining, non-hazardous jobs with certain work hours restrictions. Different rules apply in agricultural employment.

**TIP CREDIT** Employers of “tipped employees” who meet certain conditions may claim a partial wage credit based on tips received by their employees. Employers must pay tipped employees a cash wage of at least \$2.13 per hour if they claim a tip credit against their minimum wage obligation. If an employee’s tips combined with the employer’s cash wage of at least \$2.13 per hour do not equal the minimum hourly wage, the employer must make up the difference.

**NURSING MOTHERS** The FLSA requires employers to provide reasonable break time for a nursing mother employee who is subject to the FLSA’s overtime requirements in order for the employee to express breast milk for her nursing child for one year after the child’s birth each time such employee has a need to express breast milk. Employers are also required to provide a place, other than a bathroom, that is shielded from view and free from intrusion from coworkers and the public, which may be used by the employee to express breast milk.

**ENFORCEMENT** The Department has authority to recover back wages and an equal amount in liquidated damages in instances of minimum wage, overtime, and other violations. The Department may litigate and/or recommend criminal prosecution. Employers may be assessed civil money penalties for each willful or repeated violation of the minimum wage or overtime pay provisions of the law. Civil money penalties may also be assessed for violations of the FLSA’s child labor provisions. Heightened civil money penalties may be assessed for each child labor violation that results in the death or serious injury of any minor employee, and such assessments may be doubled when the violations are determined to be willful or repeated. The law also prohibits retaliating against or discharging workers who file a complaint or participate in any proceeding under the FLSA.

**ADDITIONAL INFORMATION**

- Certain occupations and establishments are exempt from the minimum wage, and/or overtime pay provisions.
- Special provisions apply to workers in American Samoa, the Commonwealth of the Northern Mariana Islands, and the Commonwealth of Puerto Rico.
- Some state laws provide greater employee protections; employers must comply with both.
- Some employers incorrectly classify workers as “independent contractors” when they are actually employees under the FLSA. It is important to know the difference between the two because employees (unless exempt) are entitled to the FLSA’s minimum wage and overtime pay protections and correctly classified independent contractors are not.
- Certain full-time students, student learners, apprentices, and workers with disabilities may be paid less than the minimum wage under special certificates issued by the Department of Labor.



WAGE AND HOUR DIVISION  
UNITED STATES DEPARTMENT OF LABOR

1-866-487-9243  
TTY: 1-877-889-5627  
[www.dol.gov/whd](http://www.dol.gov/whd)



# Equal Employment Opportunity is THE LAW

## **Private Employers, State and Local Governments, Educational Institutions, Employment Agencies and Labor Organizations**

Applicants to and employees of most private employers, state and local governments, educational institutions, employment agencies and labor organizations are protected under Federal law from discrimination on the following bases:

### **RACE, COLOR, RELIGION, SEX, NATIONAL ORIGIN**

Title VII of the Civil Rights Act of 1964, as amended, protects applicants and employees from discrimination in hiring, promotion, discharge, pay, fringe benefits, job training, classification, referral, and other aspects of employment, on the basis of race, color, religion, sex (including pregnancy), or national origin. Religious discrimination includes failing to reasonably accommodate an employee's religious practices where the accommodation does not impose undue hardship.

### **DISABILITY**

Title I and Title V of the Americans with Disabilities Act of 1990, as amended, protect qualified individuals from discrimination on the basis of disability in hiring, promotion, discharge, pay, fringe benefits, job training, classification, referral, and other aspects of employment. Disability discrimination includes not making reasonable accommodation to the known physical or mental limitations of an otherwise qualified individual with a disability who is an applicant or employee, barring undue hardship.

### **AGE**

The Age Discrimination in Employment Act of 1967, as amended, protects applicants and employees 40 years of age or older from discrimination based on age in hiring, promotion, discharge, pay, fringe benefits, job training, classification, referral, and other aspects of employment.

### **SEX (WAGES)**

In addition to sex discrimination prohibited by Title VII of the Civil Rights Act, as amended, the Equal Pay Act of 1963, as amended, prohibits sex discrimination in the payment of wages to women and men performing substantially equal work, in jobs that require equal skill, effort, and responsibility, under similar working conditions, in the same establishment.

### **GENETICS**

Title II of the Genetic Information Nondiscrimination Act of 2008 protects applicants and employees from discrimination based on genetic information in hiring, promotion, discharge, pay, fringe benefits, job training, classification, referral, and other aspects of employment. GINA also restricts employers' acquisition of genetic information and strictly limits disclosure of genetic information. Genetic information includes information about genetic tests of applicants, employees, or their family members; the manifestation of diseases or disorders in family members (family medical history); and requests for or receipt of genetic services by applicants, employees, or their family members.

### **RETALIATION**

All of these Federal laws prohibit covered entities from retaliating against a person who files a charge of discrimination, participates in a discrimination proceeding, or otherwise opposes an unlawful employment practice.

### **WHAT TO DO IF YOU BELIEVE DISCRIMINATION HAS OCCURRED**

There are strict time limits for filing charges of employment discrimination. To preserve the ability of EEOC to act on your behalf and to protect your right to file a private lawsuit, should you ultimately need to, you should contact EEOC promptly when discrimination is suspected:

The U.S. Equal Employment Opportunity Commission (EEOC), 1-800-669-4000 (toll-free) or 1-800-669-6820 (toll-free TTY number for individuals with hearing impairments). EEOC field office information is available at [www.eeoc.gov](http://www.eeoc.gov) or in most telephone directories in the U.S. Government or Federal Government section. Additional information about EEOC, including information about charge filing, is available at [www.eeoc.gov](http://www.eeoc.gov).

---

## Employers Holding Federal Contracts or Subcontracts

Applicants to and employees of companies with a Federal government contract or subcontract are protected under Federal law from discrimination on the following bases:

### **RACE, COLOR, RELIGION, SEX, NATIONAL ORIGIN**

Executive Order 11246, as amended, prohibits job discrimination on the basis of race, color, religion, sex or national origin, and requires affirmative action to ensure equality of opportunity in all aspects of employment.

### **INDIVIDUALS WITH DISABILITIES**

Section 503 of the Rehabilitation Act of 1973, as amended, protects qualified individuals from discrimination on the basis of disability in hiring, promotion, discharge, pay, fringe benefits, job training, classification, referral, and other aspects of employment. Disability discrimination includes not making reasonable accommodation to the known physical or mental limitations of an otherwise qualified individual with a disability who is an applicant or employee, barring undue hardship. Section 503 also requires that Federal contractors take affirmative action to employ and advance in employment qualified individuals with disabilities at all levels of employment, including the executive level.

### **DISABLED, RECENTLY SEPARATED, OTHER PROTECTED, AND ARMED FORCES SERVICE MEDAL VETERANS**

The Vietnam Era Veterans' Readjustment Assistance Act of 1974, as amended, 38 U.S.C. 4212, prohibits job discrimination and requires affirmative action to employ and advance in employment disabled veterans, recently separated veterans (within

three years of discharge or release from active duty), other protected veterans (veterans who served during a war or in a campaign or expedition for which a campaign badge has been authorized), and Armed Forces service medal veterans (veterans who, while on active duty, participated in a U.S. military operation for which an Armed Forces service medal was awarded).

### **RETALIATION**

Retaliation is prohibited against a person who files a complaint of discrimination, participates in an OFCCP proceeding, or otherwise opposes discrimination under these Federal laws.

Any person who believes a contractor has violated its nondiscrimination or affirmative action obligations under the authorities above should contact immediately:

The Office of Federal Contract Compliance Programs (OFCCP), U.S. Department of Labor, 200 Constitution Avenue, N.W., Washington, D.C. 20210, 1-800-397-6251 (toll-free) or (202) 693-1337 (TTY). OFCCP may also be contacted by e-mail at [OFCCP-Public@dol.gov](mailto:OFCCP-Public@dol.gov), or by calling an OFCCP regional or district office, listed in most telephone directories under U.S. Government, Department of Labor.

---

## Programs or Activities Receiving Federal Financial Assistance

### **RACE, COLOR, NATIONAL ORIGIN, SEX**

In addition to the protections of Title VII of the Civil Rights Act of 1964, as amended, Title VI of the Civil Rights Act of 1964, as amended, prohibits discrimination on the basis of race, color or national origin in programs or activities receiving Federal financial assistance. Employment discrimination is covered by Title VI if the primary objective of the financial assistance is provision of employment, or where employment discrimination causes or may cause discrimination in providing services under such programs. Title IX of the Education Amendments of 1972 prohibits employment discrimination on the basis of sex in educational programs or activities which receive Federal financial assistance.

### **INDIVIDUALS WITH DISABILITIES**

Section 504 of the Rehabilitation Act of 1973, as amended, prohibits employment discrimination on the basis of disability in any program or activity which receives Federal financial assistance. Discrimination is prohibited in all aspects of employment against persons with disabilities who, with or without reasonable accommodation, can perform the essential functions of the job.

If you believe you have been discriminated against in a program of any institution which receives Federal financial assistance, you should immediately contact the Federal agency providing such assistance.





Occupational Safety  
and Health Administration

# Job Safety and Health IT'S THE LAW!

## All workers have the right to:

- A safe workplace.
- Raise a safety or health concern with your employer or OSHA, or report a work-related injury or illness, without being retaliated against.
- Receive information and training on job hazards, including all hazardous substances in your workplace.
- Request an OSHA inspection of your workplace if you believe there are unsafe or unhealthy conditions. OSHA will keep your name confidential. You have the right to have a representative contact OSHA on your behalf.
- Participate (or have your representative

## Employers must:

- Provide employees a workplace free from recognized hazards. It is illegal to retaliate against an employee for using any of their rights under the law, including raising a health and safety concern with you or with OSHA, or reporting a work-related injury or illness.
- Comply with all applicable OSHA standards.
- Report to OSHA all work-related fatalities within 8 hours, and all inpatient hospitalizations, amputations and losses of an eye within 24 hours.
- Provide required training to all workers in a language and vocabulary they can understand.
- Prominently display this poster in the workplace.

participate) in an OSHA inspection and speak in private to the inspector.

- File a complaint with OSHA within 30 days (by phone, online or by mail) if you have been retaliated against for using your rights.
- See any OSHA citations issued to your employer.
- Request copies of your medical records, tests that measure hazards in the workplace, and the workplace injury and illness log.

*This poster is available free from OSHA.*

***Contact OSHA. We can help.***

- Post OSHA citations at or near the place of the alleged violations.

FREE ASSISTANCE to identify and correct hazards is available to small and medium-sized employers, without citation or penalty, through OSHA-supported consultation programs in every state.



OSHA 3165-04R 2015

**1-800-321-OSHA (6742) • TTY 1-877-889-5627 • [www.osha.gov](http://www.osha.gov)**



# EMPLOYEE RIGHTS UNDER THE FAMILY AND MEDICAL LEAVE ACT

THE UNITED STATES DEPARTMENT OF LABOR WAGE AND HOUR DIVISION

## LEAVE ENTITLEMENTS



Eligible employees who work for a covered employer can take up to 12 weeks of unpaid, job-protected leave in a 12-month period for the following reasons:

- The birth of a child or placement of a child for adoption or foster care;
- To bond with a child (leave must be taken within 1 year of the child’s birth or placement);
- To care for the employee’s spouse, child, or parent who has a qualifying serious health condition;
- For the employee’s own qualifying serious health condition that makes the employee unable to perform the employee’s job;
- For qualifying exigencies related to the foreign deployment of a military member who is the employee’s spouse, child, or parent.

An eligible employee who is a covered servicemember’s spouse, child, parent, or next of kin may also take up to 26 weeks of FMLA leave in a single 12-month period to care for the servicemember with a serious injury or illness.

An employee does not need to use leave in one block. When it is medically necessary or otherwise permitted, employees may take leave intermittently or on a reduced schedule.

Employees may choose, or an employer may require, use of accrued paid leave while taking FMLA leave. If an employee substitutes accrued paid leave for FMLA leave, the employee must comply with the employer’s normal paid leave policies.

While employees are on FMLA leave, employers must continue health insurance coverage as if the employees were not on leave.

Upon return from FMLA leave, most employees must be restored to the same job or one nearly identical to it with equivalent pay, benefits, and other employment terms and conditions.

An employer may not interfere with an individual’s FMLA rights or retaliate against someone for using or trying to use FMLA leave, opposing any practice made unlawful by the FMLA, or being involved in any proceeding under or related to the FMLA.

## BENEFITS & PROTECTIONS

## ELIGIBILITY REQUIREMENTS

An employee who works for a covered employer must meet three criteria in order to be eligible for FMLA leave. The employee must:

- Have worked for the employer for at least 12 months;
- Have at least 1,250 hours of service in the 12 months before taking leave;\* and
- Work at a location where the employer has at least 50 employees within 75 miles of the employee’s worksite.

\*Special “hours of service” requirements apply to airline flight crew employees.

## REQUESTING LEAVE

Generally, employees must give 30-days’ advance notice of the need for FMLA leave. If it is not possible to give 30-days’ notice, an employee must notify the employer as soon as possible and, generally, follow the employer’s usual procedures.

Employees do not have to share a medical diagnosis, but must provide enough information to the employer so it can determine if the leave qualifies for FMLA protection. Sufficient information could include informing an employer that the employee is or will be unable to perform his or her job functions, that a family member cannot perform daily activities, or that hospitalization or continuing medical treatment is necessary. Employees must inform the employer if the need for leave is for a reason for which FMLA leave was previously taken or certified.

Employers can require a certification or periodic recertification supporting the need for leave. If the employer determines that the certification is incomplete, it must provide a written notice indicating what additional information is required.

Once an employer becomes aware that an employee’s need for leave is for a reason that may qualify under the FMLA, the employer must notify the employee if he or she is eligible for FMLA leave and, if eligible, must also provide a notice of rights and responsibilities under the FMLA. If the employee is not eligible, the employer must provide a reason for ineligibility.

Employers must notify its employees if leave will be designated as FMLA leave, and if so, how much leave will be designated as FMLA leave.

Employees may file a complaint with the U.S. Department of Labor, Wage and Hour Division, or may bring a private lawsuit against an employer.

The FMLA does not affect any federal or state law prohibiting discrimination or supersede any state or local law or collective bargaining agreement that provides greater family or medical leave rights.

## EMPLOYER RESPONSIBILITIES

## ENFORCEMENT



For additional information or to file a complaint:

**1-866-4-USWAGE**

(1-866-487-9243) TTY: 1-877-889-5627

**www.dol.gov/whd**

U.S. Department of Labor | Wage and Hour Division





# YOUR RIGHTS UNDER USERRA

## THE UNIFORMED SERVICES EMPLOYMENT AND REEMPLOYMENT RIGHTS ACT

**USERRA protects the job rights of individuals who voluntarily or involuntarily leave employment positions to undertake military service or certain types of service in the National Disaster Medical System. USERRA also prohibits employers from discriminating against past and present members of the uniformed services, and applicants to the uniformed services.**

### REEMPLOYMENT RIGHTS

You have the right to be reemployed in your civilian job if you leave that job to perform service in the uniformed service and:

- ★ you ensure that your employer receives advance written or verbal notice of your service;
- ★ you have five years or less of cumulative service in the uniformed services while with that particular employer;
- ★ you return to work or apply for reemployment in a timely manner after conclusion of service; and
- ★ you have not been separated from service with a disqualifying discharge or under other than honorable conditions.

If you are eligible to be reemployed, you must be restored to the job and benefits you would have attained if you had not been absent due to military service or, in some cases, a comparable job.

### RIGHT TO BE FREE FROM DISCRIMINATION AND RETALIATION

If you:

- ★ are a past or present member of the uniformed service;
- ★ have applied for membership in the uniformed service; or
- ★ are obligated to serve in the uniformed service;

then an employer may not deny you:

- ★ initial employment;
- ★ reemployment;
- ★ retention in employment;
- ★ promotion; or
- ★ any benefit of employment

because of this status.

In addition, an employer may not retaliate against anyone assisting in the enforcement of USERRA rights, including testifying or making a statement in connection with a proceeding under USERRA, even if that person has no service connection.

### HEALTH INSURANCE PROTECTION

- ★ If you leave your job to perform military service, you have the right to elect to continue your existing employer-based health plan coverage for you and your dependents for up to 24 months while in the military.
- ★ Even if you don't elect to continue coverage during your military service, you have the right to be reinstated in your employer's health plan when you are reemployed, generally without any waiting periods or exclusions (e.g., pre-existing condition exclusions) except for service-connected illnesses or injuries.

### ENFORCEMENT

- ★ The U.S. Department of Labor, Veterans Employment and Training Service (VETS) is authorized to investigate and resolve complaints of USERRA violations.
- ★ For assistance in filing a complaint, or for any other information on USERRA, contact VETS at **1-866-4-USA-DOL** or visit its **website at <http://www.dol.gov/vets>**. An interactive online USERRA Advisor can be viewed at **<http://www.dol.gov/elaws/userra.htm>**.
- ★ If you file a complaint with VETS and VETS is unable to resolve it, you may request that your case be referred to the Department of Justice or the Office of Special Counsel, as applicable, for representation.
- ★ You may also bypass the VETS process and bring a civil action against an employer for violations of USERRA.

The rights listed here may vary depending on the circumstances. The text of this notice was prepared by VETS, and may be viewed on the internet at this address: <http://www.dol.gov/vets/programs/userra/poster.htm>. Federal law requires employers to notify employees of their rights under USERRA, and employers may meet this requirement by displaying the text of this notice where they customarily place notices for employees.



**U.S. Department of Labor**  
**1-866-487-2365**



**U.S. Department of Justice**



**Office of Special Counsel**



**EMPLOYER SUPPORT OF  
THE GUARD AND RESERVE**  
**1-800-336-4590**

Publication Date—April 2017