



Insights:

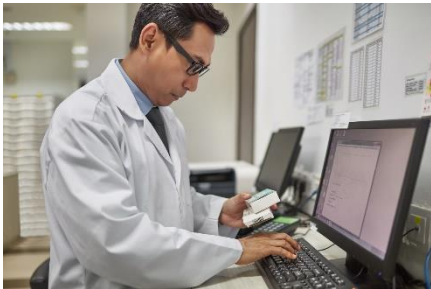
Emerging Trends for Clinical Leadership

January 2020

TRC HEALTHCARE – MONTHLY EXECUTIVE BRIEF

IN THIS ISSUE

Practice Changing Pharmacy Updates



E-Prescriptions for Controlled Substances

Pain Point: New laws in six states now mandate e-prescriptions for controlled substances; more states will follow. Pharmacies should be ready to handle the influx of additional e-Rxs, as well as be alert for possible errors.

Solution: This month's featured *Pharmacist's Letter* article delivers practical advice to help pharmacy teams properly process controlled substance e-Rxs, stay compliant with new laws, and reduce the risk of med errors.

[Read the full article](#) now.

PPIs in Patients with Nonvariceal Upper GI Bleeds

Pain Point: Questions about the best way to dose proton pump inhibitors (PPI) when treating patients with nonvariceal upper GI bleeds often arise due to limited evidence supporting one regimen over another. And when shortages lead to intermittent supply issues for IV PPIs, hospitals need to determine where to conserve use.

Solution: New guidelines continue to recommend IV PPI infusions.

This month, the *Hospital Pharmacist's Letter* article, "Optimize PPI Dosing for Nonvariceal Upper GI Bleeds," delivers recommendations incorporating the updated guidelines with available evidence to provide a practical approach for dosing PPIs in these patients.

Teams will also find two helpful clinical resource charts, "Managing Upper GI Bleeds," and "Esophageal Variceal Bleeding FAQs" to guide care decisions.

Read the [January article](#) now.

[1 • Practice Changing Updates](#)

[1 • News You Need to Know](#)

[2 • Product Spotlight](#)

[3 • News & Events](#)

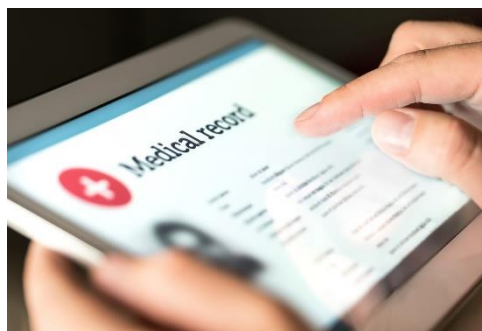
[3 • Continuing Education](#)

Want More? [Access the Current Issue\(s\)](#)

News You Need to Know

Insights delivers the latest in emerging trends for clinical leadership straight to your inbox. Included in each monthly edition, you'll receive industry-relevant updates, timely new facts, and advice to help you and your pharmacy teams leverage the most from your TRC Healthcare subscriptions. You'll also see the latest CE courses added to our course catalog, as well as important national and state requirements to keep you and your staff in compliance.

Contact us anytime for more information. Visit trchealthcare.com, or [email us](#).



Medication Reconciliation in Critically Ill Patients

Pain Point: Challenges abound for medication reconciliation in patients admitted in critical condition.

Solution: This month's *Hospital Pharmacy Technician's Letter* article encourages techs to work with nursing staff to help streamline workflows so that med histories for ICU patients don't fall through the

cracks. Techs can also leverage the updated "Mastering Med Lists and Histories" technician tutorial for more tips on getting the best list possible to help reduce problems with medications, improve patient safety, and potentially reduce hospital admissions.

Read the full *Hospital Pharmacy Technician's Letter* article [here](#).

Product Spotlight

Prescriber's Letter

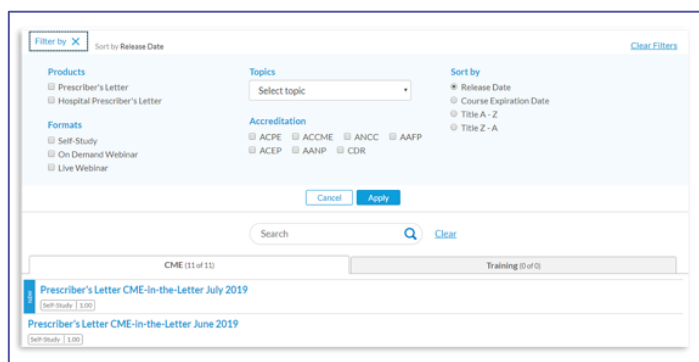
New CE/CME Training Platform

With an emphasis on performance and ease-of-use, the newest release of our CE/CME training platform provides access to the largest, most relevant pharmacology course library available with greater efficiency and speed.

New features include:

- Intuitive navigation
- Modern look and feel
- Faster performance
- Mobile-friendly experience
- Advanced CE/CME course filtering
- Live CE/CME calendar
- Simplified views of course progress and completion
- Updated support for multi-state licenses
- Automated reporting to CE Broker and AAFP

Advanced course filtering allows user to sort courses by format, accreditation, release date, and more:



Learn more about the new training platform [here](#).

MOST POPULAR CLINICAL RESOURCES OF 2019

Check out the top five most popular clinical resources in *Hospital Prescriber's Letter* in 2019:

- [Opioid Stewardship Checklist](#)
- [Perioperative Management of Chronic Medications in Noncardiac Surgery chart](#)
- [Acute Heart Failure: FAQs](#)
- [Perioperative Management of Diabetes chart](#)
- [Venous Thromboembolism Prophylaxis chart](#)

February Articles Preview

Fresh content being developed for the February *Letters* includes:

Pharmacist's Letter: Optimizing loop diuretics for volume overload or edema in heart failure

Hospital Pharmacist's Letter: The new antibiotic imipenem/cilastatin/relebactam; managing cocaine, amphetamine, and other stimulant overdoses

Pharmacy Technician's Letter: Appropriate med use for Rx written "off-label"

Prescriber's Letter: Expanded screening and simplified med regimes for hepatitis C

Sign up for Free Clinical Resources

Click the button below to join our mailing list to receive invitations to free clinical webinars and complimentary resources in your area of interest.



News & Events

Upcoming Webinars

Hot Topic Webcast: "Screening and Treatment for Hepatitis C." Feb. 20, 12 PM Eastern. Registration coming soon.

Emerging Recommendations Panel

February 2020: (Formerly *PL Voices Clinical Recommendations*) Feb. 20, 8 PM Eastern.

Click on "Live CE Calendar" on the "CE & Training" tab in your *Letter* product to register.

Upcoming Events

Health Connect Partners (HCP) Spring Hospital Pharmacy Conference May 18–20, New Orleans, LA, booth #1209



Continuing Education

TRC's accredited learning center for medication management offers **continuing education in 13 categories**, including:

- Disease State Management / Drug Therapy
- HIV / AIDS
- Law
- General Pharmacy
- Patient Safety / Medication Errors
- Archived Webinars
- Competency
- Compliance
- Hospital / Specialty
- Preceptor
- Training
- Immunization
- Compounding

Stay on top of certification, license, and continuing education renewal periods and associated hours required for your state. Make note of the states below that have renewal periods in the current/coming months, as well as ongoing state and national requirements. View details for each state, as well as a list of associated continuing education courses available to meet requirements [here](#).

| January | Ongoing | National |
|---------------------------------|--|-------------|
| Nebraska | California Maryland New Mexico | PTCB NHA |
| February | New York Tennessee Texas Washington | |
| Washington D.C. North Dakota | | |



New Continuing Education Courses

| COURSE TITLE | PRODUCT CODE | CREDIT TYPE | CREDIT HRS | COUNTRY | RELEASE DATE | CATEGORIES | COURSE DESCRIPTION | STATE REQUIREMENTS MET |
|---|---|-------------------------|------------|----------|--------------|--|--|--|
| CME-in-the-Letter: December 2019 | 19-1012 (PRL) 19-1032(PRLH) | MD, DO, PA, NP, RN | 1.00 | US & CAN | 12/1/19 | Disease State Management/ Drug Therapy | Especially for physician, nursing, and physician assistant prescribers . Timely, evidence-based recommendations you can use in your practice to improve patient outcomes. | Pharmacotherapy CE; General CME |
| CE-in-the-Letter: December 2019 | 19-712 (PL) 19-732 (PLH) 19-752 (PLC) 19-812 (PTL) 19-832 (PTLH) 19-852 (PTLC) | RPh & Tech | 1.00 | US & CAN | 12/1/19 | Disease State Management/ Drug Therapy | Especially for pharmacists and pharmacy technicians . Relevant, evidence-based recommendations you can use in your pharmacy setting to help improve patient care. | Iowa - Drug Therapy; Missouri - MTM; All others - General CE |
| Dietary and Lifestyle Interventions for Overweight and Obesity (JA0006454-0000-19-112-H01-P) | 19-112 | RPh, MD, DO, PA, NP, RN | 1.00 | US & CAN | 12/1/19 | Disease State Management/ Drug Therapy | An overview of the evidence and considerations related to the use of diets and lifestyle interventions for the management of obesity. | Iowa - Drug Therapy; Missouri - MTM; All others - General CE |
| Clotting Factor Concentrates (JA0006454-0000-19-251-H01-P) | 19-251 | RPh | 1.00 | US & CAN | 12/1/19 | Disease State Management/ Drug Therapy | This course provides an overview bleeding disorders with an emphasis on use of clotting factor concentrates for prophylaxis, treatment, and prevention of bleeding. | Iowa - Drug Therapy; Missouri - Blood Clotting & MTM; All others - General CE |
| Promoting Patient Safety with Controlled Substances (JA0006454-0000-19-255-H05-P) | 19-255 | RPh | 2.00 | US & CAN | 12/1/19 | Patient Safety / Med Errors | This course reviews strategies for preventing diversion and ensuring patient safety with opioid prescriptions. | Medication Errors; Oregon - Patient Safety/Med Errors; Pennsylvania - Patient Safety/Med Errors; All others - General CE |
| Steps to Prevent Controlled Substance Diversion (JA0006454-0000-19-256-H04-P) | 19-256 | RPh | 1.00 | US & CAN | 12/1/19 | General | An overview of the tools and strategies that can be used to recognize and prevent prescription controlled substance diversion. | Controlled Substance Diversion; Iowa - General; General CE |
| Strategies for Communicating Effectively with Patients (JA0006454-0000-19-257-H04-P) | 19-257 | RPh | 1.00 | US & CAN | 12/1/19 | General | This course provides an overview of patient communication strategies, including how to best communicate with angry, hearing impaired, and visually impaired patients | Iowa - General; General CE |

| COURSE TITLE | PRODUCT CODE | CREDIT TYPE | CREDIT HRS | COUNTRY | RELEASE DATE | CATEGORIES | COURSE DESCRIPTION | STATE REQUIREMENTS MET |
|--|--------------|-------------|------------|----------|--------------|-----------------------------|--|---|
| Ethical Issues in the Pharmacy (JA0006454-0000-19-331-H04-P) (JA0006454-0000-19-331-H04-T) | 19-331 | RPh & Tech | 1.00 | US & CAN | 12/1/19 | General | This course discusses ethics as they relate to pharmacy practice. The course reviews the eight principles of the pharmacist's Code of Ethics and includes examples of where ethics can be applied such as confidentiality, medication error prevention, healthcare professional communication, conscientious objection, and cultural competence. | Iowa - General; General CE |
| Prepare for Disasters and Emergencies (JA0006454-0000-19-332-H04-P) (JA0006454-0000-19-332-H04-T) | 19-332 | RPh & Tech | 1.00 | US & CAN | 12/1/19 | General | This course discusses how pharmacists and pharmacy technicians can become involved in disasters and emergency situations that require assistance on a local, regional, and/or federal level. | Iowa - General; General CE |
| Self-Care and Well-Being for Pharmacy Staff (JA0006454-0000-19-335-H04-P) (JA0006454-0000-19-335-H04-T) | 19-335 | RPh & Tech | 1.00 | US & CAN | 12/1/19 | General | This course reviews the causes and impacts of burnout among healthcare workers and ways to help prevent and manage burnout by focusing on strategies that promote self-care, well-being, and resilience. | Iowa - General; General CE |
| Healthy Foods for a Healthy Life (JA0006454-0000-19-346-H04-P) (JA0006454-0000-19-346-H04-T) | 19-346 | RPh & Tech | 1.00 | US & CAN | 12/1/19 | General | This course discusses how the foods we eat have an impact on our health. It outlines healthy food choices and how to eat to improve chronic conditions such as obesity, high blood pressure, diabetes, and cancer. | Iowa - General; General CE |
| Combating Methamphetamine Abuse 2020 (JA0006454-0000-19-347-H03-P) (JA0006454-0000-19-347-H03-T) | 19-347 | RPh & Tech | 1.00 | US & CAN | 12/1/19 | Law | This course reviews the requirements of the Combat Methamphetamine Epidemic Act of 2005 for retail pharmacies selling over-the-counter drugs considered to be methamphetamine precursors (e.g., ephedrine- and pseudoephedrine-containing products). | Law; All others - General CE |
| Medication Error Prevention (JA0006454-0000-19-348-H05-P) (JA0006454-0000-19-348-H05-T) | 19-348 | RPh & Tech | 2.00 | US & CAN | 12/1/19 | Patient Safety / Med Errors | This course provides an overview of medication errors, including how and why they occur, and review strategies for preventing errors. | Medication Errors; Oregon - Patient Safety/Med Errors; Pennsylvania - Patient Safety/Med Errors; All others - General CE |
| Sexual Harassment Prevention (JA0006454-0000-19-349-H04-P) | 19-349 | RPh & Tech | 1.00 | US & CAN | 12/1/19 | General | This course provides an overview of what sexual harassment is, how to prevent and handle it, and options for reporting it. | Illinois - Sexual Harassment; All others - General CE |

| COURSE TITLE | PRODUCT CODE | CREDIT TYPE | CREDIT HRS | COUNTRY | RELEASE DATE | CATEGORIES | COURSE DESCRIPTION | STATE REQUIREMENTS MET |
|---|--------------|-------------|------------|----------|----------------------|---|--|--|
| (JA0006454-0000-19-349-H04-T) | | | | | | | | |
| Communication Skills for Technicians (JA0006454-0000-19-405-H04-P) | 19-405 | Tech | 1.00 | US & CAN | 12/1/19 | General | This course provides an overview of medication errors, including how and why they occur, and review strategies for preventing errors. | Iowa - General; General CE |
| Pharmacy Essential Updates: July 2019 (JA0006454-0000-19-507-L01-P) (JA0006454-0000-19-507-L01-T) | 19-507 | RPh & Tech | 1.00 | US & CAN | 12/14/19 12/18/19 | Live CE; Disease State Management/ Drug Therapy | Learn from this in-depth review and discussion of the month's leading article topics and learn how to incorporate recommendations from the issue into your daily practice. This webinar is appropriate for Pharmacists and Technicians and is accredited by ACPE. This is a subscriber-only activity. Each monthly episode of the series is archived after the live viewing and is then available on-demand. | Live CE; Iowa - Drug Therapy; Missouri - MTM; All others - General CE |
| Pharmacy Essential Updates: August 2019 (JA0006454-0000-19-508-L01-P) (JA0006454-0000-19-508-L01-T) | 19-508 | RPh & Tech | 1.00 | US & CAN | 12/14/19 12/18/19 | Live CE; Disease State Management/ Drug Therapy | Learn from this in-depth review and discussion of the month's leading article topics and learn how to incorporate recommendations from the issue into your daily practice. This webinar is appropriate for Pharmacists and Technicians and is accredited by ACPE. This is a subscriber-only activity. Each monthly episode of the series is archived after the live viewing and is then available on-demand. | Live CE; Iowa - Drug Therapy; Missouri - MTM; All others - General CE |
| Pharmacy Essential Updates: September 2019 (JA0006454-0000-19-509-L01-P) (JA0006454-0000-19-509-L01-T) | 19-509 | RPh & Tech | 1.00 | US & CAN | 12/14/19 12/18/19 | Live CE; Disease State Management/ Drug Therapy | Learn from this in-depth review and discussion of the month's leading article topics and learn how to incorporate recommendations from the issue into your daily practice. This webinar is appropriate for Pharmacists and Technicians and is accredited by ACPE. This is a subscriber-only activity. Each monthly episode of the series is archived after the live viewing and is then available on-demand. | Live CE; Iowa - Drug Therapy; Missouri - MTM; All others - General CE |
| Pharmacy Essential Updates: October 2019 (JA0006454-0000-19-510-L01-P) | 19-510 | RPh & Tech | 1.00 | US & CAN | 12/14/19 12/17/19 | Live CE; Disease State Management/ Drug Therapy | Learn from this in-depth review and discussion of the month's leading article topics and learn how to incorporate recommendations from the issue into your daily practice. This webinar is appropriate for | Live CE; Iowa - Drug Therapy; Missouri - MTM; All others - General CE |

| COURSE TITLE | PRODUCT CODE | CREDIT TYPE | CREDIT HRS | COUNTRY | RELEASE DATE | CATEGORIES | COURSE DESCRIPTION | STATE REQUIREMENTS MET |
|--|--------------|-------------------|------------|----------|---|---|---|--|
| (JA0006454-0000-19-510-L01-T) | | | | | | | Pharmacists and Technicians and is accredited by ACPE. This is a subscriber-only activity. Each monthly episode of the series is archived after the live viewing and is then available on-demand. | |
| Pharmacy Essential Updates: November 2019 (JA0006454-0000-19-511-L01-P) (JA0006454-0000-19-511-L01-T) | 19-511 | RPh & Tech | 1.00 | US & CAN | 12/14/19 12/17/19 | Live CE; Disease State Management/ Drug Therapy | Learn from this in-depth review and discussion of the month's leading article topics and learn how to incorporate recommendations from the issue into your daily practice. This webinar is appropriate for Pharmacists and Technicians and is accredited by ACPE. This is a subscriber-only activity. Each monthly episode of the series is archived after the live viewing and is then available on-demand. | Live CE; Iowa - Drug Therapy; Missouri - MTM; All others - General CE |
| Pharmacy Essential Updates: December 2019 (JA0006454-0000-19-512-L01-P) (JA0006454-0000-19-512-L01-T) | 19-512 | RPh & Tech | 1.00 | US & CAN | 12/4/19 12/10/19 12/14/19 12/17/19 | Live CE; Disease State Management/ Drug Therapy | Learn from this in-depth review and discussion of the month's leading article topics and learn how to incorporate recommendations from the issue into your daily practice. This webinar is appropriate for Pharmacists and Technicians and is accredited by ACPE. This is a subscriber-only activity. Each monthly episode of the series is archived after the live viewing and is then available on-demand. | Live CE; Iowa - Drug Therapy; Missouri - MTM; All others - General CE |
| Emerging Recommendation Panel: December 2019 (JA0006454-0000-19-592-L01-P) | 19-592 | RPh & Pre-scriber | 1.00 | US & CAN | 12/10/19 | Live CE; Disease State Management/ Drug Therapy | Listen in as TRC Editorial staff and our community of expert advisors discuss and debate the clinical recommendations that will be published in the next issue of the monthly Letter. This webinar is appropriate for Pharmacists, Advanced Practitioners and Physicians and is accredited by ACPE and ACCME. This is a premium, subscriber-only activity. Each monthly episode of the series is archived after the live viewing and is then available on-demand. | Live CE; Iowa - Drug Therapy; Missouri - MTM; All others - General CE |