



# Grass Roots

www.cmscustomlawn.com

4151 S. 84 St. Omaha, NE 68127 402.738.1718

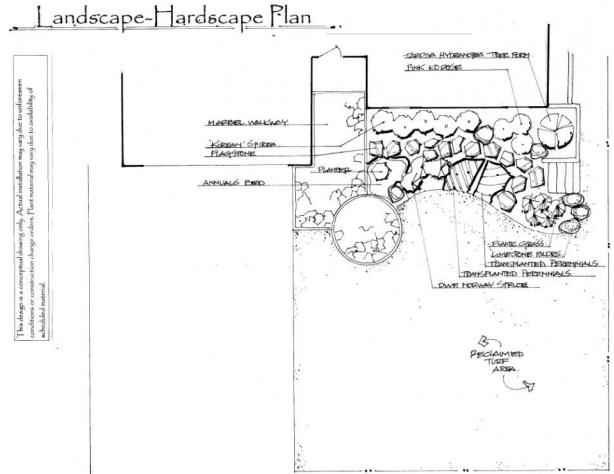
Volume 2017 Issue 1

## Happy New Year from CM's A Cut Above!

At the beginning of each new year we enjoy looking back at projects with which our clients have entrusted us, and we look forward to the new relationships and the new projects we will build in the future. We hope you enjoy seeing these projects and we wish you a very happy new year!



This project actually started in 2015 when CM's replaced a tie wall on the front corner of the house with a Highland Stone block wall and added Omega steps down the hill of the yard.



In 2016, the project expanded by removing the existing concrete front walkway and replacing it with mega arbel paver path and mega stone soldier course pavers. A chocolate mulch landscape bed with a flagstone path and boulder accents was added from the front walkway to the Omega steps. The landscape bed and planters are filled with various trees shrubs, perennials and annuals including tardiva hydrangea tree, flame grass, coleus, salvia and begonias.



### Reminders

\*\*\*Return 2017 Contracts \*\*\* Schedule an appointment with one of CM's landscape designers.\*\*\*

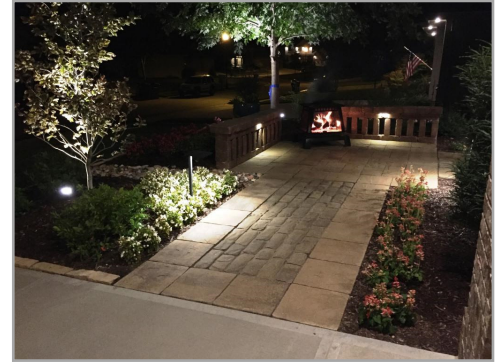
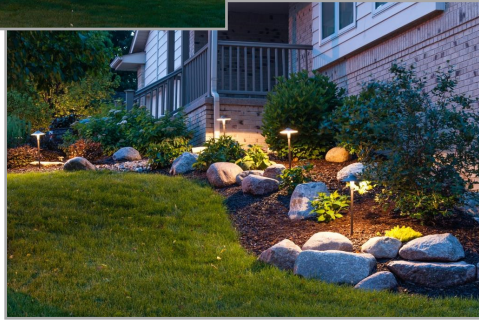


# Light the Way

Landscape lighting is a popular addition to any type of landscape. In addition to the aesthetic aspect of landscape lighting, a well-lit property is a simple way to enhance the security of your home. These projects showcase several of the uses of landscape lights.



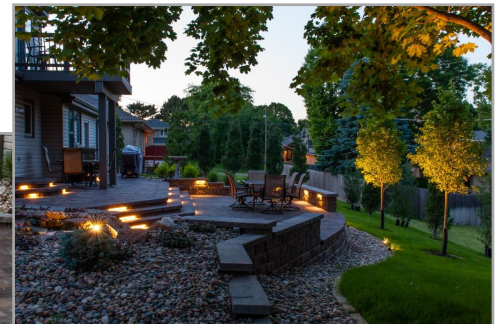
This project uses a spot light to shine on the tree, while path lights are accenting the lovely landscape bed.



In addition to the spot light and path lights in this project, the free standing wall has under cap lights as well. Not only do these lights draw attention to the landscape, they light the way to the front courtyard.

Contact CM's to design and install your project!

Spot lights are used for the trees, under cap lights are used on the walls and the stairs to light your every step and a pond light reflects beautifully at the top of the waterfall.



E-mail: [admin@cmstustomlawm.com](mailto:admin@cmstustomlawm.com)

Phone: 402.614.2771

Phone: 402.738.1718

Omaha, NE 68127

4151 S. 84 St.

CM's