

Contract Machining

Inspired by you. **Created** by us.



Over 80 years of Industry Leading Innovation

- **Machining**
- **Welding**
- **Fabrication**
- **Painting**
- **Engineering**
- **Assembly**

ELSNERTM

— PURPOSE BUILT PRECISION —

Since 1934

UNMATCHED CAPABILITIES

MACHINING, WELDING, FABRICATING, PAINTING, ASSEMBLY, ENGINEERING

ELSNER™



Big or Small Parts

We can make a wide range of parts to suit your needs.

Efficient Turnaround Times

We'll get the job done quickly and accurately.

We're an OEM

We are up to the challenge.

No Minimum Quantity

We'll produce a million or one...up to you!

Machine Rebuild & Assembly

We make it convenient for you.

Turn-key Engineering

Our engineers use the latest 2D and 3D technology to bring your project to life!



Additional Support Services include:

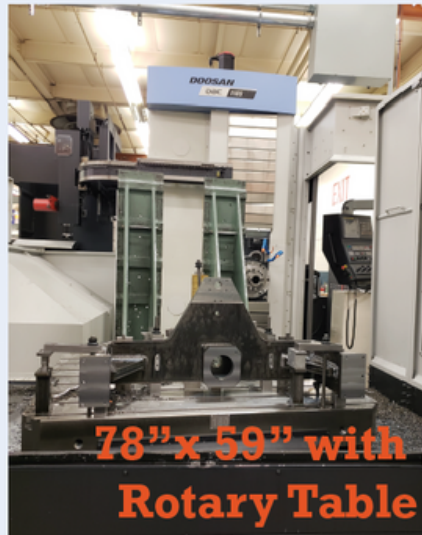
Repair Parts, Reverse Engineering, Breakdown Services, Electrical Panel Wiring, Plating & Hardening Solutions, & Engineering Consultations

WE MAKE A PROMISE TO EVERY CUSTOMER EVERY DAY.

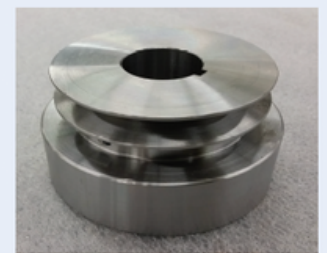
Elsner is here to exceed your expectations in every way. Incomparable integrity, craftsmanship and service have been our heritage, passion and promise to our customers for more than 80 years.

Our Workable Materials

- **Stainless Steel**
- **Carbon Steel**
- **Sheet Metal**
- **Aluminum**
- **Non-ferrous Metals**
- **Composites**
- **Plastic**



WE HAVE THE
LARGEST MILLING
MACHINES IN THE
HANDOVER-AREA!



"It is appreciated and helps build loyalty by knowing you help us build a better product we are all proud of." - **Manufacturer of hydraulic reservoir tanks**

FACILITIES LISTING

Visit our 57,000 + sq.ft. facility

CNC Mills

- Clausing Mill SUP6BV, 5113, 41" x 19" x 16", 5HP Acu-Rite 3500i control
- Clausing Mill SUP6BV, 45915, 41" x 19" x 16", 5HP Acu-Rite 3500i control
- Daewoo DVM4020, 12102, 40" x 20", 20 5HP, 24 tool magazine, 1000 psi coolant thru, 4th axis rotary table
- Daewoo DVM4020, 12206, 40" x 20", 20 5HP, 30 tool magazine, 1000 psi coolant thru, 4th axis rotary table
- Doosan DBC 110S, 49017, 78.4" x 59" x 47.2" x 21.6, 35HP, 40 tool magazine, coolant thru, 4th axis table
- Mighty 2100AP Viper, 6000, 81" x 41.3" x 32.3", 30HP, 4th axis rotary table
- Mori Seiki MV-40B, 11890, 31.5" x 16.1" x 20.1", 7.5HP, 30 tool magazine
- Mori Seiki MV-45B, 11990, 31.5" x 18.5" x 20.1", 7.5HP, 30 tool magazine
- V-Tec VF-4000, 46013, 165" x 90" x 36" 25HP, 60 tool magazine, coolant thru, Right Angle Head

Boring Mills

- G&L DP4T Boring Mill, 2774, 87" x 55" x 30", 20HP, 4" spindle
- G&L 65-D3-T Boring Mill, 9865, 48" x 42" x 48", 15HP, 3" spindle

Manual Mills

- Bridgeport Series 1, 1581, 27" x 9" x 16", 2HP
- Bridgeport Series 1, 4385, 27" x 9" x 16", 2HP
- Bridgeport Series 1, 21164, 20" x 9" x 16", 2HP

CNC Lathes

- Doosan Puma 2600LY, 47517, 10" chuck 51.6" turning length, 30HP, 3" dia. X 48" bar feed, Y axis live tooling
- Mori-Seiki SL-15M, 1389, 6" chuck, 23.4" between centers, 7.5 HP, 1.625" dia x 144" bar feeder, live tooling
- Okuma Crown E, 3298, 8" chuck, 19.7" between centers, 12HP, bar support
- Okuma LB35II, 3196, 12" chuck, 59" between centers, 40 HP, steady rest, 12 Station Turret
- Doosan Puma 2100Y, 47619, 8" chuck, 20.47" turning, 30HP, 2 5/8" dia. x 48" bar feed, Y axis live tooling

Manual Lathes

- Mazak-30, 3088, 28" chuck, 120" between centers, 20HP, steady rest
- Monarch 612, 2267, 16" chuck, 54" between centers, 10HP, steady rest
- Monarch EE, 2180, 10" chuck, 20" between centers, 5HP

Manual Grinders

- Brown & Sharpe Micromaster Surface Grinder, 10064, 12"x36", 5HP
- Cincinnati Cylindrical Grinder, 8460, 14" dia x 84", 5HP

Gear Machines

- Barber-Coleman 16-16 Gear Hobber, 11790, 16" dia, 2HP
- Fellows 6A Gear Shaper, 4462, 18" dia x 5", 3HP

Welding Machines

- Miller Welder 350-P, 40607, Mig, Wire Feed
- Miller Welder 350-P, 40707, Mig, Wire Feed
- Miller Welder 350-P, 40807, Mig, Wire Feed
- Miller Welder 350-P, 47117, Mig, Wire Feed
- Miller Welder Syncrowave 350 LX 35600, Tig welder
- Miller Dynasty 200 DX Pulse, 46115, Tig welder
- Rex FRU-20 Spot Welder, 4446
- Hyper therm Powermax1000, 39205, portable plasma cutter 1" maximum capacity

Bandsaws

- Do-All C-305A Horizontal, 4694, 12" x 12", 5HP
- Do-All C-305A Horizontal, 4508, 12" x 12", 5HP
- Do-All 3012-U Vertical, 3763, 12" x 30", 3HP
- Do-All 3613-1 Vertical, 4188, 13" x 36", 3HP

Sheet Metal Machines

- Guifil GHE 625 Shear, 12093, 8'4" length, 32 Ton
- Steelweld H3½-8 Brake Press, 5046, 11.5' length, 7.5HP, 112 tons

Other Machines

- Dake 75H Hydraulic Press, 38405, 75 ton capacity
- Landis Threading Machine, 4239, 8" chuck, 12"
- Lemco Shaft Straightening Press, 8863, 4" dia, 12 Ton
- JBI DB-1010-S Paint Booth, 23094, 7'x9 ½'x9 ½'
- Sunnen MBB-1660 Hone, 10478, 16" length, ½HP
- American H-10-48 Broach, 4838, 10 ton

Inspection

- Faro Arm Portable CMM, 45815
- Phase II Hardness Tester, 46215



In addition to our list of well-maintained machine tools...

We have many floor mounted and portable drill presses, tool grinders, shears, roll benders, arbor presses, etc. Our fabricating department is well-equipped for all types of welding, including MIG, TIG and spot welding and the necessary grinders, etc. The entire manufacturing area is air-conditioned and all bays are served by overhead crane facilities with capabilities ranging from 2 to 10 tons, up to 19' under the hook.

ELSNER™
— PURPOSE BUILT PRECISION —

475 Fame Avenue Hanover, PA 17331

PHONE +1.717.637.5991

FAX +1.717.633.7100

EMAIL EEW@ElsnerEng.com