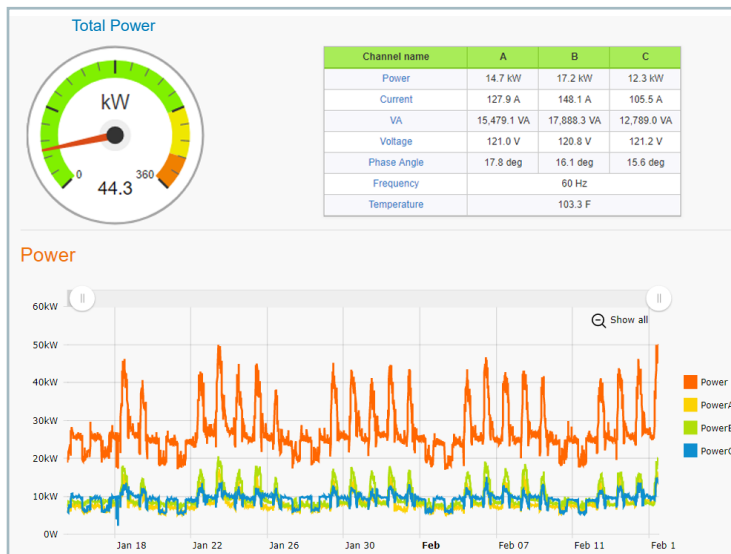


Easiest, fastest path to energy insights

EMX delivers full power and environmental monitoring capabilities at a fraction of the cost and complexity of competing solutions and without the need for external consultants.



Why EMX



Shortest time to value



Instant access to useful data; no programming required



Highly flexible reporting and alerting capabilities



Use in the cloud or install on site

Features

- Real-time and historical power, temperature, humidity and pressure information
- Easily map monitoring units to facility layout
- Accessible from any web browser
- Works with Packet Power monitors and any device that supports SNMP or Modbus
- Supports a multi-tenant model making it a strong fit for colo companies
- Offered as cloud-based service or local software application

Reports

- Common reports are built in and easily accessed including:
 - Current, power and energy by circuit
 - Temperature and humidity
 - Energy costs
- Easily tailored to add cabinet, room, end user, project and other data
- Easily and securely share reports and graphical dashboards with end users
- Export reports in universal formats
- Wide range of report customization options

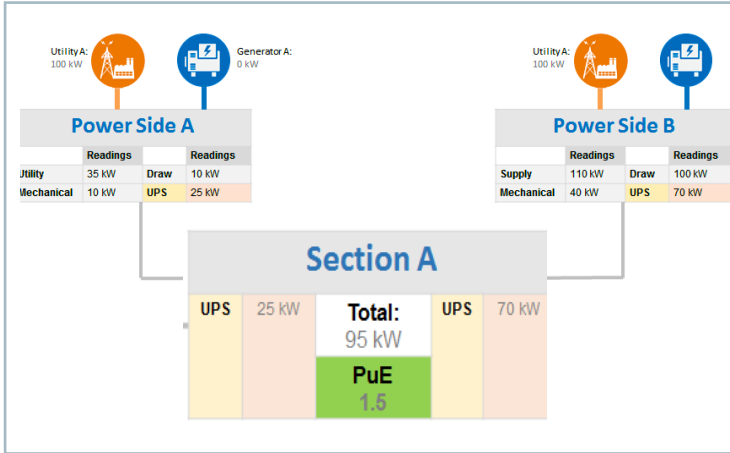
Dashboards

- Easily create custom, graphical views and share using unique secure links
- Simple wizard makes PUE calculations easy

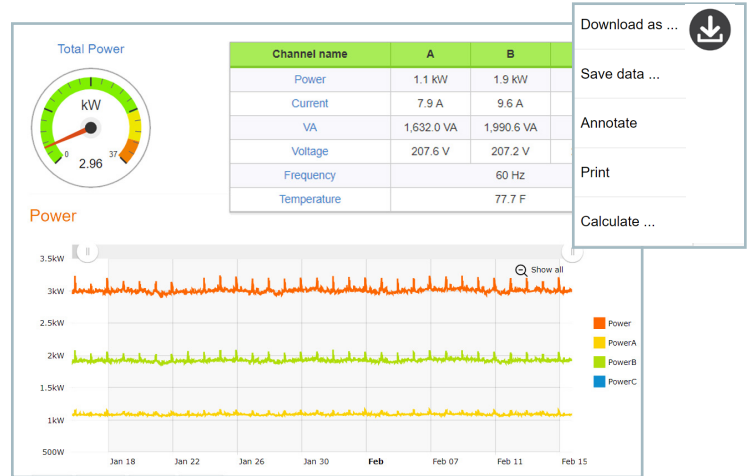
Policies and Alerts

- Set policies to spot anomalies before they become problems
- Can be set at device, cabinet and room levels
- Policy violations can trigger alerts delivered via SMS or email

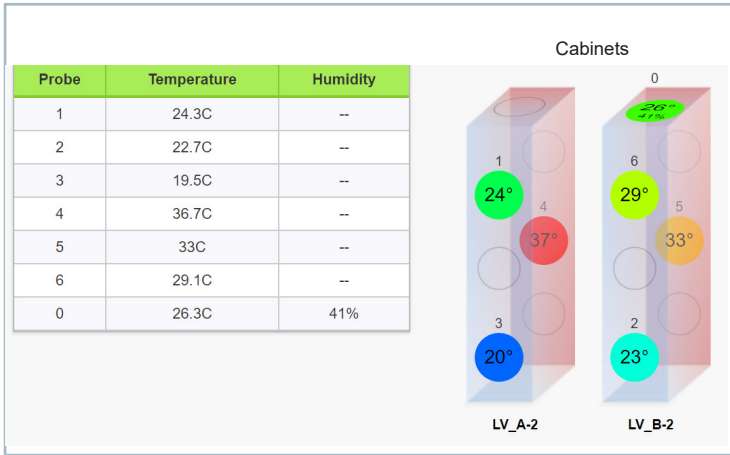
Intuitive Monitoring Software



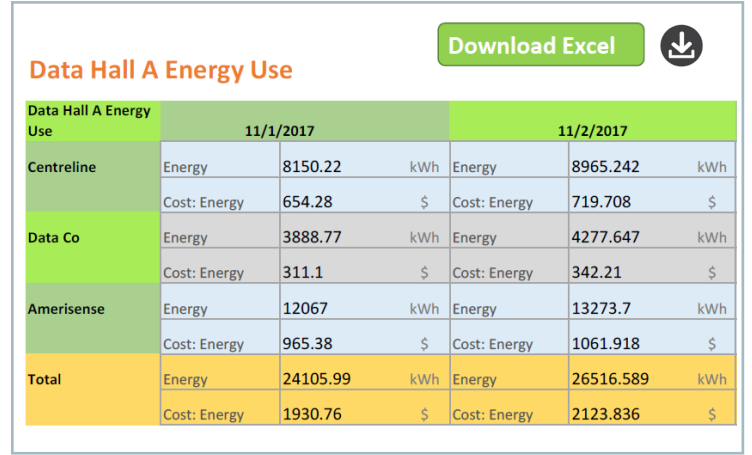
Calculate PUE



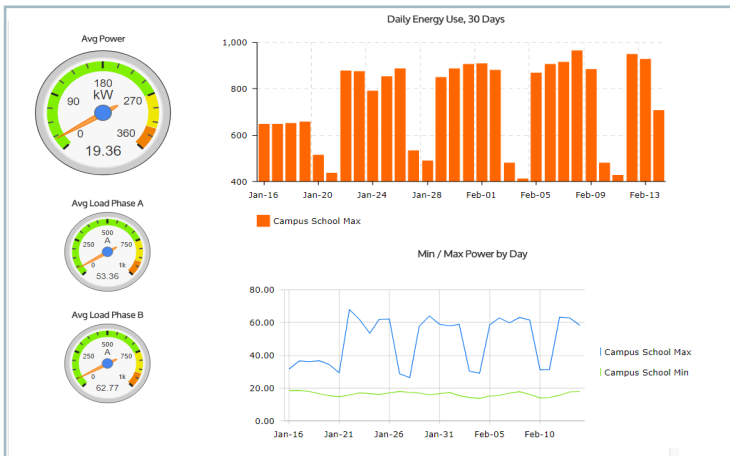
Easily share data



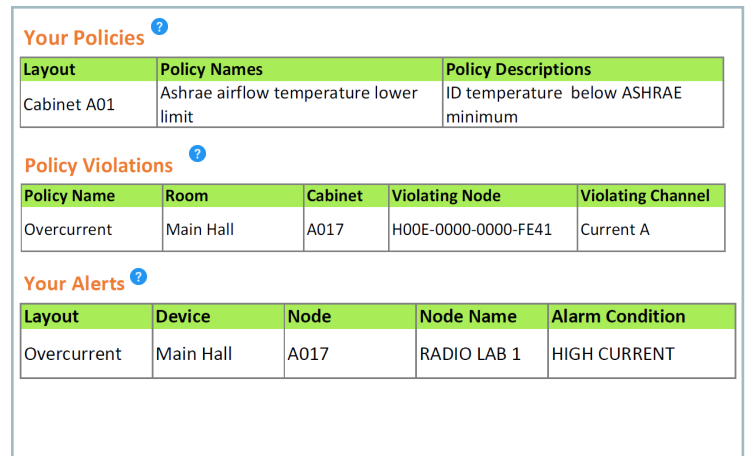
Detect hot spots



Allocate energy costs by customer



Create custom dashboards



Set policies that trigger alerts