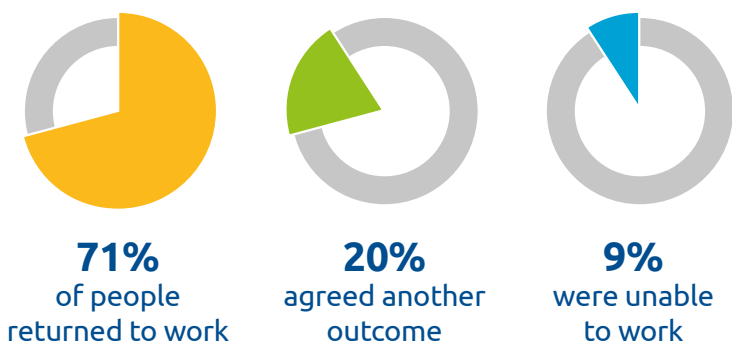


Group Income Protection Return to Work Statement

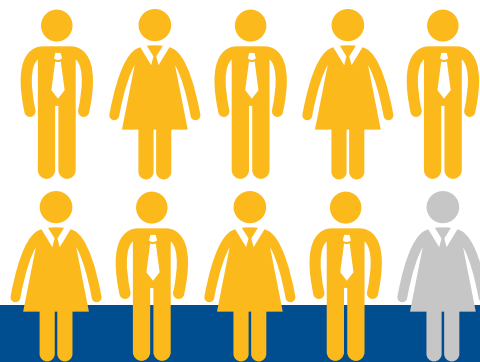
How our rehab service made a difference in 2017
1 Jan 2017 – 31 Dec 2017

All conditions

Results

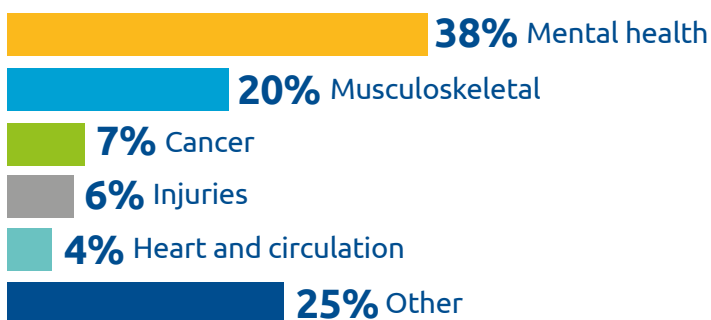


9 out of 10 people who used Unum's rehabilitation services returned to work within 6 months.



Who are the people we helped back to work?

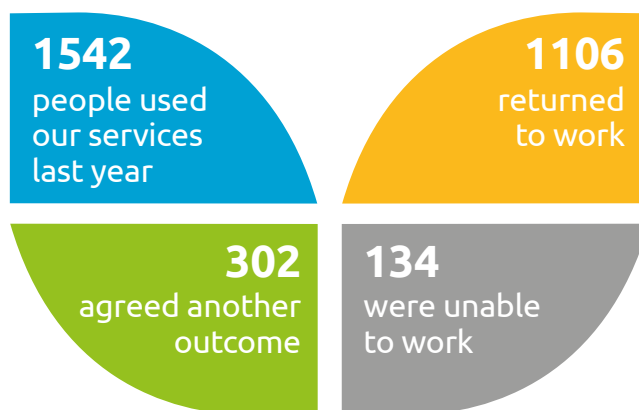
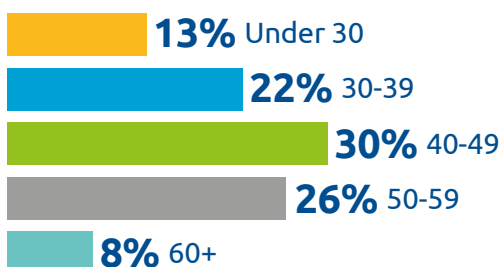
Health condition



Gender



Age



Group Income Protection Return to Work Statement

How our rehab service made a difference in 2017
1 Jan 2017 – 31 Dec 2017

Mental health only

Results



70%
Returned to work



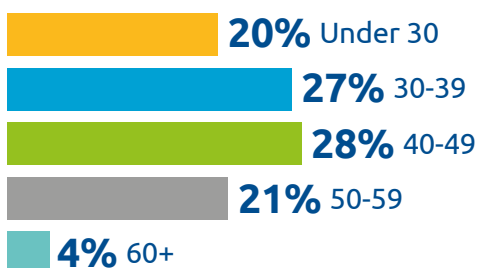
20%
Agreed another outcome



10%
Did not return to work

Who are the people we helped back to work?

Age

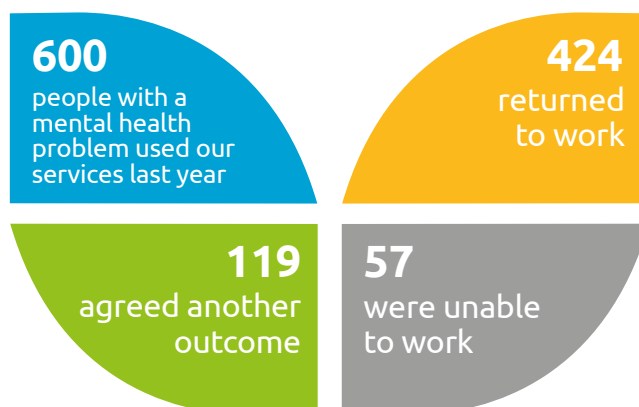


Gender



How we help

- ✓ Vocational rehabilitation
- ✓ Access to treatment
- ✓ Advice for line managers and employers
- ✓ Employee Assistance Programme
- ✓ Training for employers and staff
- ✓ Mental health first aid
- ✓ Early intervention services
- ✓ Financial security



Group Income Protection Return to Work Statement

How our rehab service made a difference from 2015-2017

All conditions

Results



4671
people used our return to work service



67%
Returned to work

3149
people



21%
agreed another outcome

988
people

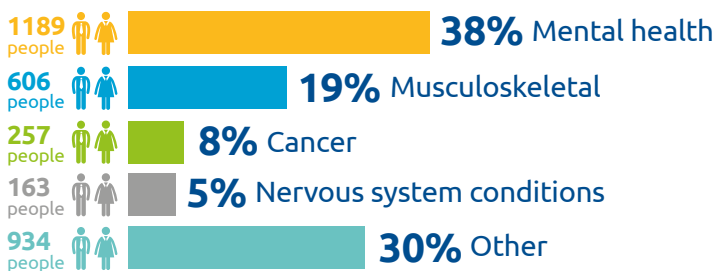


11%
were unable to work

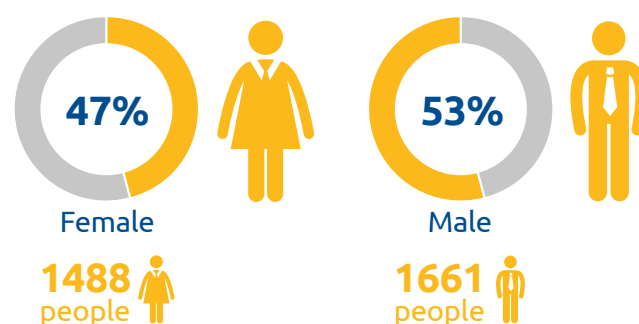
534
people

Who are the people we helped back to work?

Health condition



Gender



Age

