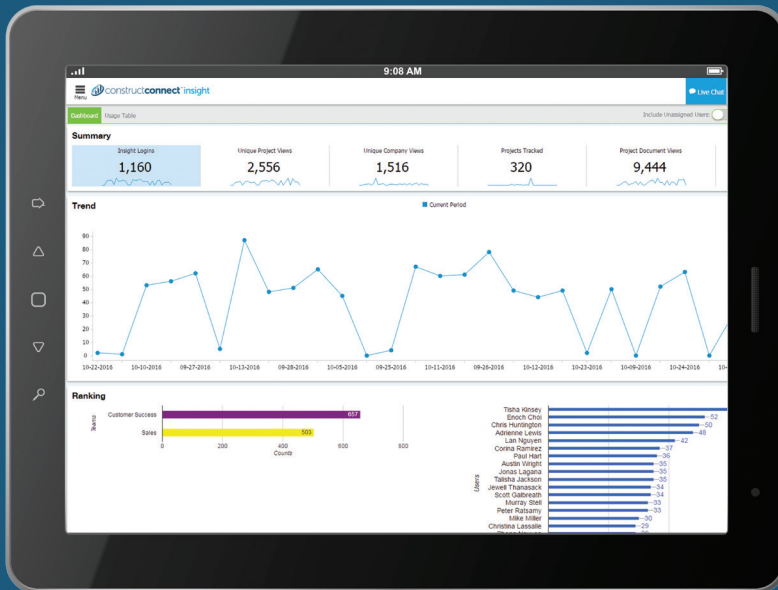


# Pulse

Get visibility that helps drive results.



## Increase Visibility

Proactively view team and user activity and track performance

## Create Alignment

Ensure that your team structure aligns with your go-to-market strategy

## Drive Effectiveness

Evaluate your team's needs and adjust to capitalize on emerging opportunities

## Measure Improvement

Reporting helps you set and track goals to ensure users are maximizing Insight

The Pulse feature on ConstructConnect Insight provides business leaders with better visibility into the usage and performance of teams or individual users. Measurable metrics include Insight logins, project views, searches performed, and more.

Pulse provides the following components:

**Team Management** — Create an organizational chart that aligns with your go-to-market strategy and use roles to delegate responsibility or restrict access

**Dashboard** — See an at-a-glance view of team and user performance using Insight

**Usage Data Table** — View and export company, team, or individual usage metrics for Forecast, Analyze, and Leads

### Why choose ConstructConnect?

ConstructConnect is the only data provider with national U.S. coverage and the strongest Canadian coverage. We are also an Innovation Partner of the AIA, which means we track more private projects from the earliest information sources—owners and architects. ConstructConnect uses all possible resources to give you the most accurate, dependable project information available.

Interested in learning more?  
**Visit [ConstructConnect.com](http://ConstructConnect.com)**