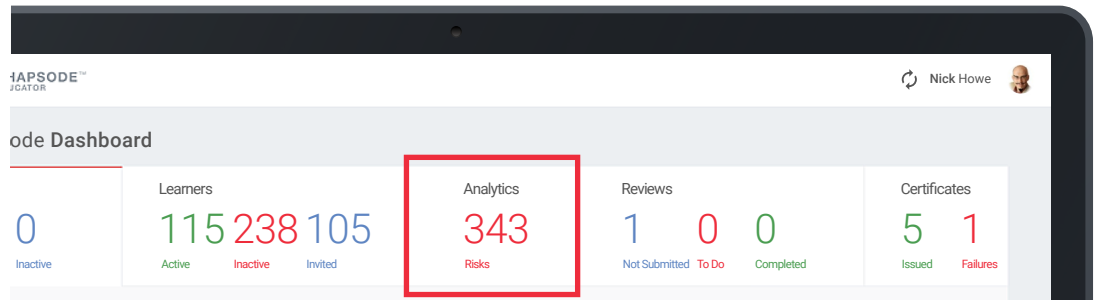


area9
LYCEUM



REPORTS & **ANALYTICS**

ADAPTIVE LEARNING IN FOUR DIMENSIONS



01

ANALYTICS DASHBOARD

The dashboard is accessed through the Analytics tab in Area9 Rhapsode EDUCATOR™.

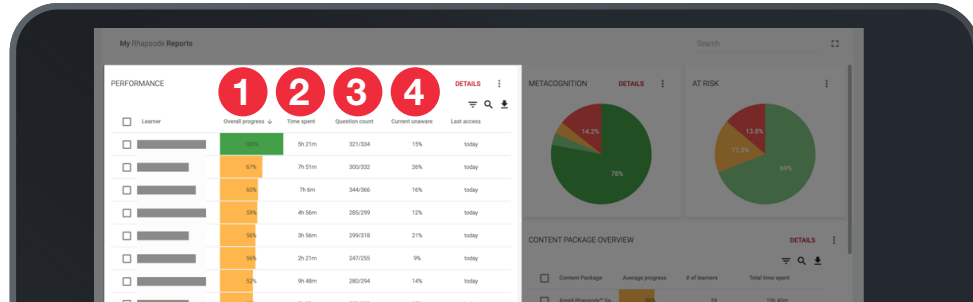
The dashboard provides access to the different reports that aggregate learner and content data, including full drill-down capabilities and tabular and graphical views.

The dashboard is fully customizable with default reports covering:

- ✓ Learner Performance
- ✓ Learner Progress by Assignment
- ✓ Learner Metacognition
- ✓ Learner Progress by Learning Objective
- ✓ "At risk" Learners

CONTENT REPORTS

A unique feature of adaptive learning is the deep insight it gives as to how your content is performing. Since Area9 Rhapsode™ tracks every interaction with every probe and learning resource, it can tell you exactly which parts of your content learners are struggling with. Now, rather than a 'spray and pray' approach to training where you have little idea what is working, with Area9 Rhapsode™ it does not only gives you immediate feedback but enables you to fine tune your training for maximum impact.



02

PERFORMANCE REPORT

1 Overall Progress

This is the progress towards mastery of the content, in other words, how proficient each learner is in the overall course.

Questions to ask:

- Is progress where you would expect it to be for the population, especially if you've set a target completion date?
- Are there particular learners or groups of learners who are complete or behind schedule? Is this expected? Does it matter?

2 Time Spent

Area9 Rhapsode™ has timers that attempt to accurately track when learners are active in the application.

Questions to ask:

- How does time taken compare with performance achieved?
- How does time taken compare with accuracy and metacognition?

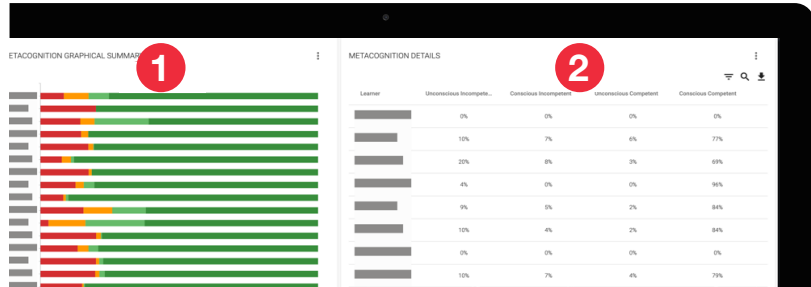
3 Question Count

This is the total number of questions (probes) that each learner has answered correctly vs the number attempted, also shown as a percentage. This is a measure of how accurate the learner was, or how well they knew the material going into the course. Note that questions may be encountered more than once, especially when learners get questions wrong.

- Best possible performance is demonstrated by high percentage, with question attempted count (the second number) close to the total number of required probes as per the Area9 Rhapsode CURATOR™ interface.
- The best performer will have 100% progress, the highest percentage in the Question Count column, and the lowest question count.

4 Current Unaware

Area9 Rhapsode™, through its confidence self-assessment feature, measures a learners conscious and unconscious competence and incompetence. These are shown in detail in the Metacognitive Report, but the unconscious (or unaware) scores are totaled together here.



03

METACOGNITIVE SKILLS REPORT

1 Summary Chart

This gives an overview of the learner population.

- Dark green shows conscious competence. These are learning objectives the learners already knew (or could do) and were confident in, and therefore did not need to be taught. This is the source of most time savings compared to other teaching methods.
- Light green shows unconscious competence. These are things the learners knew but lacked confidence. The system will boost confidence and raise self-awareness.
- Orange shows conscious incompetence. Here the learners knew they did not know. The system will teach to these learning objectives.
- Dark red shows unconscious incompetence, or misconceptions. Here the learners thought they knew something, when in fact they were wholly or partially wrong.

2 Detailed Results

- Look for especially high 'Incorrect and Unaware' percentages, and follow up with these learners.
- Are the learners with high 'Correct and Aware' scores the ones whom you would expect them to be?
- High 'Incorrect and aware' numbers usually indicate novices.
- High 'Incorrect and unaware' can often be associated with experts or tenured employees whose knowledge may have become outdated.

AREA9  RHAPSODE™

Area9 Rhapsode™ is a fully integrated content curation environment that can match the needs and skill level of each learner—eliminating unnecessary training, boosting knowledge and skill acquisition, and building self-awareness.



area9

SUMMARY

Area9 Rhapsode™ is a data-rich learning platform that gives unprecedented ROI and insight into learner and content performance. Unlike non-adaptive systems, Area9 Rhapsode™ uses that data to optimize the learning process for each learner. This means that you don't have to spend time and effort analyzing the data to get better learning outcomes - Area9 Rhapsode™ adapts automatically.

All of that data is available through our analytics engine, so if you do want to dig into learner performance, compare cohorts, or see which parts of your content aren't performing as well as they should, it is all there at your fingertips. Want to tie learning impact to business outcomes? Area9 Rhapsode™ lets you slice and dice the data to map directly to business metrics.

- ✓ Make the best use of your time. Our pre-made reports highlight at-risk learners where more feedback and support is likely to yield the most benefit.
- ✓ Design effective training regimens. Insights about topic-specific performance allow for targeted training on specific topics to close knowledge gaps.
- ✓ We analyze the learning trajectories of thousands of individuals which allows us to optimize the trajectory of every single learner.

WE ARE LOCATED IN

BOSTON

USA HQ
126 WOODLAND ROAD
CHESTNUT HILL, MA, 02467 USA
+1 781 540 2178

COPENHAGEN

EU HQ
GALIONSVEJ 37
1437 COPENHAGEN, DENMARK
+45 33 11 00 90

LEIPZIG

D-A-CH OFFICE
DITTRICHRING 2
04109 LEIPZIG, GERMANY
+49 341 355 744 90

RIYADH

SAUDI ARABIA OFFICE
2176 ABDULRAHMAN AL TOBAISHI STREET
AR RAHMANIYYAH DISTRICT
RIYADH 12344-7706

LONDON

UNITED KINGDOM OFFICE
151 WARDOUR STREET
LONDON W1F 8WE
+44 7563 449210

NEW YORK

NEW YORK OFFICE
333 SEVENTH AVENUE 18TH FLOOR
NEW YORK, NY 10001 USA

info@area9lyceum.com

