



# METALTECH

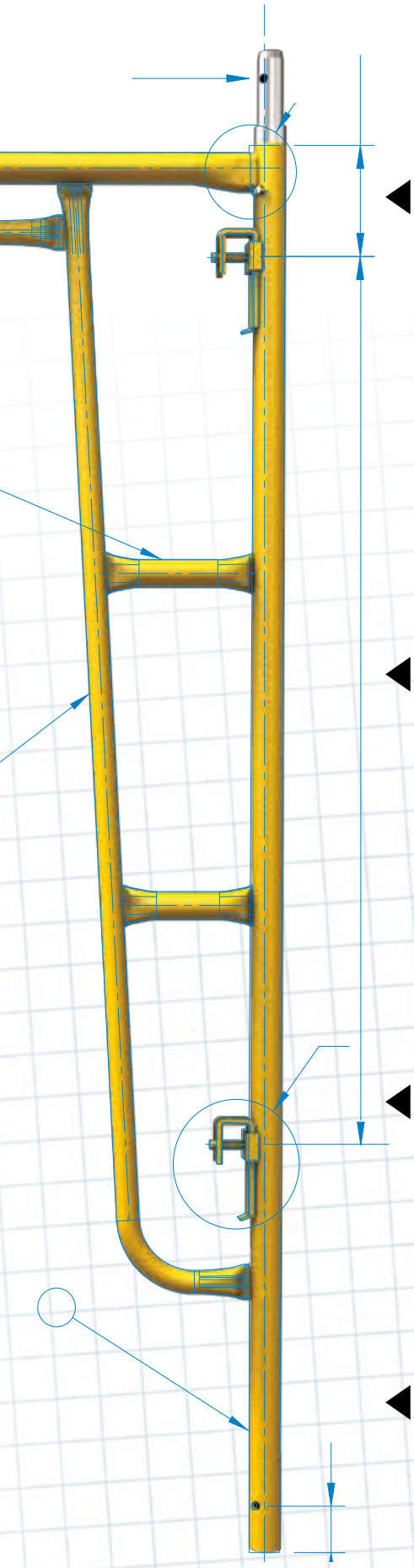
## EXTERIOR SCAFFOLDING

**SAFERSTACK®**  
A METALTECH INNOVATION

**BUILT TOUGH FOR  
SAFETY**

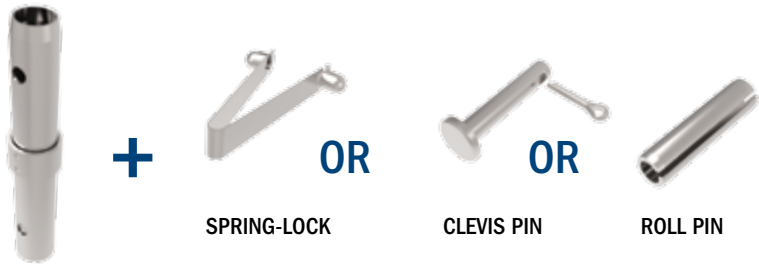
**PROUDLY MADE IN  
NORTH AMERICA**

# MANUFACTURING OPTIONS



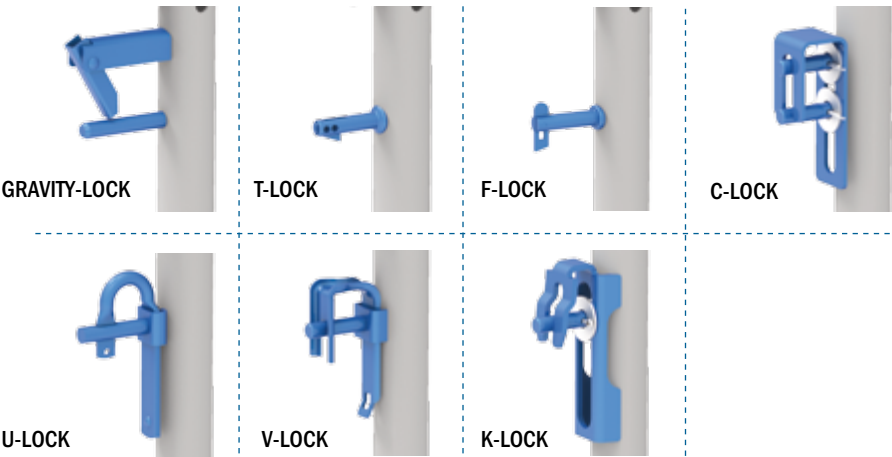
## COUPLING PINS

CONNECT & SECURE YOUR COUPLING PIN TO ANY SCAFFOLD FRAME LEGS WITH OUR CHOICE OF SPRING-LOCK, CLEVIS OR ROLL PINS. ASK OUR CUSTOMER SERVICE FOR MORE DETAILS.



## FRAME LOCKS\*

METALTECH OFFERS A WIDE RANGE OF FRAME LOCKS TO MEET YOUR NEEDS. ORDER YOUR CHOICE THROUGH OUR CUSTOMER SERVICE FOR EITHER ONE OF OUR GRAVITY-LOCK, T-LOCK, F-LOCK, C-LOCK, U-LOCK, V-LOCK OR K-LOCK LOCKING SYSTEMS.



## CUSTOM FRAMES\*

WITH OUR 50 YEARS OF EXPERIENCE, SUPPORTED BY OUR MANUFACTURING FACILITY AND ENGINEERING TEAM, WE CAN MATCH YOUR NEEDS BY DEVELOPING CUSTOM FRAMES.

## SPECIAL COLORS & HOT-DIP GALVANIZATION

MOST SCAFFOLDING FRAMES WE MANUFACTURE ARE ALSO AVAILABLE WITH A HOT-DIP GALVANIZED FINISH, IN ORDER TO INCREASE THE LIFE SPAN. WE ALSO OFFER THE OPTION TO CHOOSE POWDER COATED FINISH COLORS\* AND TEXTURES. PLEASE INQUIRE WITH CUSTOMER SERVICE FOR OUR COMPETITIVE RATES!

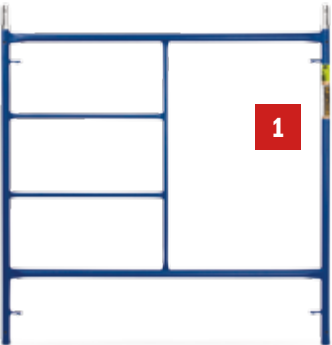


\*MINIMUM ORDER QUANTITY APPLIES



# FRAME SYSTEMS

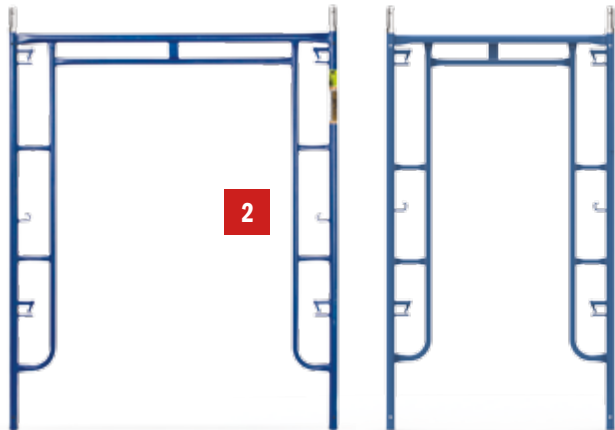
## STANDARD



### AVAILABLE DIMENSIONS:

36" X 60"	48" X 60"	60" X 60"
72" X 60"	76" X 60"	60" X 48"
60" X 30"	60" X 36"/60" (ADJUSTABLE FRAME)	

## WALK-THRU ARCH



### AVAILABLE DIMENSIONS:

76" X 60"	78" X 60"	120" X 78"	76" X 42"	121" X 60"
-----------	-----------	------------	-----------	------------

## LADDER ARCH

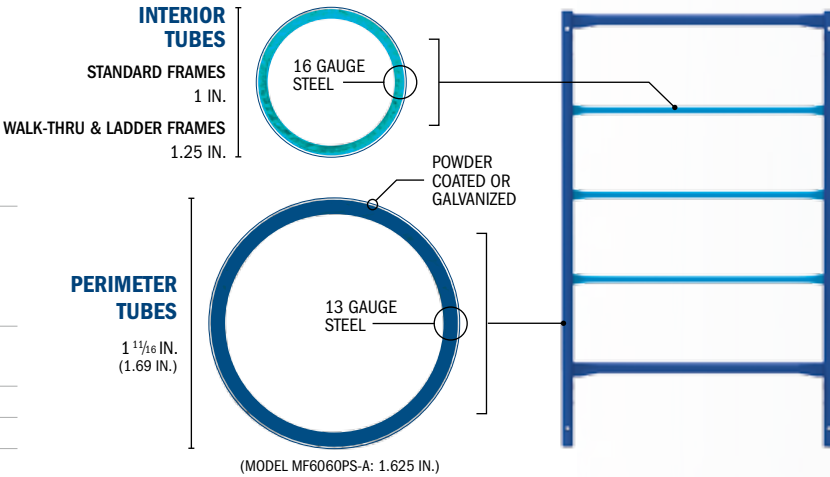


### AVAILABLE DIMENSIONS:

76" X 60"	78" X 60"
-----------	-----------

## GENERAL SPECIFICATIONS

INTERIOR TUBES	STANDARD FRAMES: OUTSIDE DIAMETER 1 IN. – 16 GAUGE WALK-THRU & LADDER FRAMES OUTSIDE DIAMETER 1.25 IN. – 16 GAUGE
PERIMETER TUBES	OUTSIDE DIAMETER 1.69 IN. – 13 GAUGE (MODEL MF6060PS-A: 1.625 IN. – 13 GAUGE)
FINISH	POWDER COATED OR GALVANIZED
STANDARDS	ANSI, OSHA AND CSA



## COMPATIBILITY

OUR FRAMES CAN BE MADE COMPATIBLE WITH BRANDS SUCH AS VANGUARD, BIL-JAX, WACO AND SAFWAY. CONTACT OUR CUSTOMER SERVICE FOR MORE INFORMATION.\*

\*ALL TRADEMARKS AND REGISTERED TRADEMARKS LISTED ABOVE ARE THE PROPERTY OF THEIR RESPECTIVE OWNERS.



**BUILT TOUGH FOR  
SAFETY**

**SAFERSTACK®**  
A METALTECH INNOVATION



**ALL PRODUCTS  
MEET**

**ANSI  
OSHA  
CSA**



# MAIN COMPONENTS

## GUARDRAIL & TOEBOARD



**A** GUARDRAIL POST AND GUARDRAIL



**B** GALVANIZED TOEBOARD

## PLATFORM & SIDE BRACKET



**C** ALUMINUM PLATFORM WITH 5/8" PLYWOOD DECK



**D** SIDE BRACKET

## COUPLING & BRACE



**E** COUPLING PIN



**F** PIG TAIL



**H** LOCK ARM



**I** GALVANIZED CROSS BRACE

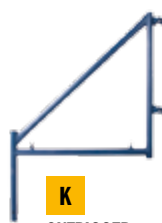


**J** GALVANIZED DIAGONAL BRACE



**G** WALL ATTACHMENT

## BASE & OUTRIGGER



**K** OUTRIGGER



**L** GALVANIZED LEVELING JACK



**M** 8 IN. CASTER



**N** 6 X 6 IN. BASE PLATE

## COMPLEMENTARY COMPONENTS

WE OFFER A VARIETY OF COMPLEMENTARY COMPONENTS LIKE STAIRWAYS, PULLEY & HOIST, BRACKETS, WAGONS, ETC. CONTACT OUR CUSTOMER SERVICE FOR MORE INFORMATION OR VISIT OUR WEBSITE.



STAIRWAY & HANDRAIL



WAGON



SCAFFOLDING RACK



HOIST POST & PULLEY



DEBRIS NETTING



LEVELING JACK WITH U-HEAD



HEAVY DUTY 8 IN. CASTER



WALL BRACKET

# SAFERSTACK® STACKS IN 30% LESS SPACE THAN REGULAR FRAMES

- SAFERSTACK® HELPS PREVENT STACKED FRAMES FROM SLIDING
- 100% COMPATIBLE WITH ANY STANDARD METALTECH® FRAME
- TESTED TO MEET ANSI, CSA AND OSHA STANDARDS



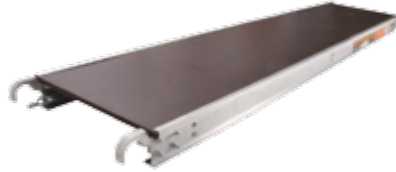
# PLATFORMS

## ALUMINUM PLATFORM WITH 5/8" PLYWOOD DECK



DIMENSIONS	LOAD CAPACITY
7 FT X 19 IN.	75 LB/FT <sup>2</sup>
7 FT X 24 IN.	
8 FT X 19 IN.	
10 FT X 19 IN.	
10 FT X 24 IN.	50 LB/FT <sup>2</sup>

## ALUMINUM PLATFORM WITH 5/8" ANTI-SLIP PLYWOOD DECK



DIMENSIONS	LOAD CAPACITY
7 FT X 19 IN.	75 LB/FT <sup>2</sup>
7 FT X 24 IN.	
10 FT X 19 IN.	
10 FT X 24 IN.	50 LB/FT <sup>2</sup>

## ALUMINUM PLATFORM WITH EDGE CAPPING



DIMENSIONS	LOAD CAPACITY
7 FT X 19 IN.	75 LB/FT <sup>2</sup>
10 FT X 19 IN.	

## ALL ALUMINUM PLATFORM



DIMENSIONS	LOAD CAPACITY
7 FT X 19 IN.	75 LB/FT <sup>2</sup>
8 FT X 19 IN.	
10 FT X 19 IN.	

## INNOVATIVE FEATURES

### ✓ CROSSBEAM\*



- EVENLY SUPPORTS THE 5/8" THICK PLYWOOD AND PREVENTS IT FROM FLEXING
- GALVANIZED STEEL
- ERGONOMIC HANDLE CUT OUT FOR COMFORT AND EASY HANDLING

### ✓ EDGE CAPPING\*\*



- PREVENTS EXTREMITY WEAR
- RE-INFORCES PLYWOOD DECK EXTREMITIES
- INCREASES THE PLYWOOD LIFESPAN
- CUSTOMIZE YOUR EDGE CAPPING WITH YOUR COMPANY NAME. (MINIMUM ORDER QUANTITY APPLIES)

### ✓ SIDE RAILS



- PROTECTS THE PLYWOOD EDGES TO PREVENTS WATER INFILTRATION, DELAMINATION AND PREMATURE WEAR

\* STANDARD ON PLYWOOD PLATFORMS MODELS OF 19 IN. WIDE.  
\*\* ONLY AVAILABLE ON PLYWOOD PLATFORMS MODELS OF 19 IN. WIDE.



### CUSTOMER SERVICE

T : **1 800 363-7587** (TOLL FREE NUMBER)

F : **1 866 517-7585**

@ : **CS@METALTECH.CO**

**WWW.METALTECH.CO**



**GET THE METALTECH APP!**

SCAFFOLDING CALCULATOR AND MORE!



Download on the  
**App Store**

GET IT ON  
**Google Play**

