



# PANDEMIC SOLUTIONS

Posters • Signs • Labels • Tapes • Floor Signs



## Table of contents:

Illness Prevention Signs & Posters.....	3 - 6
Labels .....	7
Biohazard.....	8
Social Distancing Floor Signs .....	9 - 12
Floor Marking Tapes & Footprints ....	13 - 14
Virtual Sign Projector.....	15
Mesh Fence Banners .....	16
Parking Lot & Curbside Signs .....	17

## CDC Handwashing Guidelines

Follow these five steps every time:

### WET

Wet your hands with clean, running water (warm or cold), and apply soap.

### LATHER

Lather your hands by rubbing them together with the soap. Lather the backs of your hands, between your fingers, and under your nails.

### SCRUB

Scrub your hands for at least 20 seconds. Need a timer? Hum the "Happy Birthday" song twice.

### RINSE

Rinse your hands well under clean, running water.

### DRY

Dry your hands using a clean towel or air dry them.

\*Source CDC.gov Website

# Signs

Post signs in key locations around your facility identifying the importance of, and best tips for hand washing, as well as other safeguards for preventing illness in the workplace.

**Material Reference Chart:**

<b>PSV</b>	Pressure Sensitive Vinyl
<b>PBR</b>	Removable Adhesive Backed Vinyl
<b>RB</b>	Rigid Plastic
<b>AL</b>	Aluminum



## Hand Washing



PSV	10 x 7	WH1P
PSV	14 x 10	WH1PB
PBR	14 x 10	WH1PBR
PBR	10 x 7	WH1PR
RB	14 x 10	WH1RB



PSV	10 x 7	WH2P
PSV	14 x 10	WH2PB
PBR	14 x 10	WH2PBR
PBR	10 x 7	WH2PR
RB	14 x 10	WH2RB



PSV	10 x 7	WH3P
PSV	14 x 10	WH3PB
PBR	14 x 10	WH3PBR
PBR	10 x 7	WH3PR
RB	14 x 10	WH3RB



PSV	10 x 7	WH4P
PSV	14 x 10	WH4PB
PBR	14 x 10	WH4PBR
PBR	10 x 7	WH4PR
RB	14 x 10	WH4RB



PSV	7 x 10	WH5P
PSV	10 x 14	WH5PB
PBR	10 x 14	WH5PBR
PBR	7 x 10	WH5PR
RB	10 x 14	WH5RB



PSV	7 x 10	WH6P
PSV	10 x 14	WH6PB
PBR	10 x 14	WH6PBR
PBR	7 x 10	WH6PR
RB	10 x 14	WH6RB



RB	10 x 14	N247RB
PSV	10 x 14	N247PB
AL	10 x 14	N247AB



6 x 12 VS54

DESCRIPTION	1-5	6+
3D Wall Sign	\$15.76	\$14.49



MATERIALS	7 x 10		10 x 14	
	1-5	6+	1-5	6+
Pressure Sensitive Vinyl (PSV)	\$7.07	\$6.49	\$9.33	\$8.56
Pressure Sensitive Removable Vinyl (PBR)	\$6.36	\$5.84	\$8.40	\$7.70
Rigid Plastic (RB)	-	-	\$12.64	\$11.60
Aluminum (.040)	-	-	\$23.71	\$21.78

## Entrance Guidelines



PBR 10 x 14 N521PBR  
RB 10 x 14 N521RB



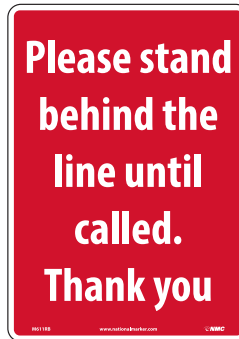
AL 10 x 14 NGA37AB  
PBR 10 x 14 NGA37PBR  
RB 10 x 14 NGA37RB



AL 10 x 14 SPNGA37AB  
PBR 10 x 14 SPNGA37PBR  
RB 10 x 14 SPNGA37RB



PBR 14 x 10 ESN520PBR  
RB 14 x 10 ESN520RB



PBR 14 x 10 M611PBR  
RB 14 x 10 M611RB



PBR 14 x 10 N520PB  
RB 14 x 10 N520RB

## Facility & Other



PSV 14 x 10 ESN518PB  
PBR 14 x 10 ESN518PBR



PSV 14 x 10 ESN519PB  
PBR 14 x 10 ESN519PBR



PSV 7 x 10 N518P  
PSV 10 x 14 N518PB  
PBR 10 x 14 N518PBR  
PBR 7 x 10 N518PR



PSV 7 x 10 N519P  
PSV 10 x 14 N519PB  
PBR 10 x 14 N519PBR  
PBR 7 x 10 N519PR

### Material Reference Chart:

- PSV** Pressure Sensitive Vinyl
- PBR** Removable Adhesive Backed Vinyl
- RB** Rigid Plastic
- AL** Aluminum

MATERIALS	7 x 10		10 x 14	
	1-5	6+	1-5	6+
Pressure Sensitive Vinyl (PSV)	\$7.07	\$6.49	\$9.33	\$8.56
Pressure Sensitive Removable Vinyl (PBR)	\$6.36	\$5.84	\$8.40	\$7.70
Rigid Plastic (RB)	-	-	\$12.64	\$11.60
Aluminum (.040)	-	-	\$23.71	\$21.78



# Posters

Provide employees, contractors and visitors with daily reminders to help reduce workplace transmission of communicable diseases.

MATERIAL	18 x 12	24 x 18
Heavy-Duty Poster Paper (HDP)	-	\$39.29
Unrippable Vinyl (UV)	\$22.36	-
Poster Paper 5/Pk, (PP)	\$11.60	-

## Material Reference Chart:

**HDP** Heavy-Duty Poster Paper  
**UV** Unrippable Vinyl  
**PP** Poster Paper



**Welcome**

We wish to extend you a warm welcome. As part of our efforts to keep you and our associates safe and healthy this is a handshake-free zone. We encourage "no contact" greetings and frequent hand washing.

**PROTECT YOURSELF • BE MINDFUL • LIMIT EXPOSURE**

**HANDSHAKE-FREE ZONE**

*stop the spread of*  
**COVID-19 & OTHER GERMS**

HDP 24 x 18 PST146  
 UV 18 x 12 PST146C  
 PP 18 x 12 5/pk PST146PP

**PRACTICE SOCIAL DISTANCING**

**6 FEET** FOLLOW THE 6 FOOT RULE  
 Maintain a distance of 6 feet at all times in public places.  
 Protect yourself and prevent the spread of viruses to others.

HDP 24 x 18 PST147  
 UV 18 x 12 PST147C  
 PP 18 x 12 5/pk PST147PP

**COVID-19** Coronavirus Disease

**PROTECT YOURSELF!**

**Follow these Preventative Measures**

**What are the symptoms of COVID-19?**  
 Patients with COVID-19 have had mild to severe respiratory illness. The following symptoms may appear 2-14 days after exposure:  
 • Fever  
 • Cough  
 • Shortness of breath

**How does this Coronavirus Disease (COVID-19) spread?**  
 The virus that causes COVID-19 seems to be spreading from person-to-person contact.  
 • Someone you are in close contact with and another person coughs or sneezes.  
 • Through respiratory droplets produced when an infected person coughs or sneezes. These droplets can be in the mouth or nose of people who are nearby or passing by.  
 • Airborne particles from coughs and sneezes.

**What if you get sick?**  
 Prevent the spread of COVID-19 if you are sick, by taking the following steps to protect others:  
 • Stay home if you are sick, except get medical care.  
 • Cover your mouth and nose with a tissue when you cough or sneeze. Use a clean tissue every time.  
 • Avoid breathing near your face.  
 • Avoid close contact with others.  
 • Clean your hands often.  
 • Avoid touching your face.  
 • Stay home and avoid public places, schools, and work.

**How can you prepare?**  
 Wash your hands!  
 • Keep your hands clean with soap and water for at least 20 seconds. If you don't have soap and water, use an alcohol-based hand sanitizer that contains at least 60% alcohol. Use a hand sanitizer that has been approved by the FDA.  
 • Avoid touching your face.  
 • Avoid close contact with people who are sick.  
 • For people traveling, wear a face mask (cloth or other fabric) on the airplane, in your community, bus or train, and in public places where you are not able to practice social distancing.  
 • Be prepared with cleaning supplies and PPE.  
 • Wear a mask, gloves, goggles, face shield, and eye protection.  
 • Use a face shield or goggles if you are working in a high-risk environment.  
 • Centers for Disease Control and Prevention (CDC) (2020) | <https://www.cdc.gov/covid19/>  
 U.S. Department of Health and Human Services (HHS) (2020) | <https://www.hhs.gov/coronavirus/>  
 American Red Cross (2020) | <https://www.redcross.org/>

HDP 24 x 18 PST141  
 UV 18 x 12 PST141C  
 PP 18 x 12 5/pk PST141PP

**SOCIAL DISTANCING**

Avoid close contact with others to prevent the spread of viruses

**Keep your distance from others**

**6 FEET**

Maintain a distance of 6 feet at all times in public places.

**Protect yourself and prevent the spread of viruses to others.**

Avoid crowded places and non-essential gatherings.  
 Limit events and activities in public.  
 Stay home and avoid contact with others.  
 If possible, do not use public transportation.

HDP 24 x 18 PST148  
 UV 18 x 12 PST148C  
 PP 18 x 12 5/pk PST148PP

**COVID-19** Coronavirus Disease

**KEEP THE WORKPLACE SAFE**

**PRACTICE GOOD HYGIENE**  
 Stop handshakes, use other non-contact methods of greeting.  
 Clean hands: Wash hands at regular intervals with soap and water for 20 seconds or use alcohol-based sanitizers.  
 Cover coughs and sneezes.  
 Disinfect surfaces like doorknobs, tables, desks, and handrails regularly, because germs can be passed by touching windows or adjust air systems.

**BE CAREFUL WITH MEETINGS**  
 Use video conferencing or call for meetings when possible.  
 Hold in-person meetings in open, well-ventilated spaces.  
 Consider adjusting or postponing large meetings or gatherings.

**HANDLE FOOD CAREFULLY**  
 Limit the sharing of food.  
 Ensure cafeteria staff and food service contacts practice strict hygiene.

**STAY OR GO HOME IF...**  
 Stay home if you are sick.  
 Stay home if you have these symptoms:  
 • Fever  
 • Cough  
 • Shortness of breath  
 Stay home if you have a sick family member at home.

**PREVENT THE SPREAD OF GERMS!**

HDP 24 x 18 PST149  
 UV 18 x 12 PST149C  
 PP 18 x 12 5/pk PST149PP

**SOCIAL DISTANCING**

Avoid close contact. Allow a 6 foot distance between you and other people.

**6 feet**

**AVOID**  
 Handshakes, Hugs and Large Crowds!

Reduce the spread of the Coronavirus.

HDP 24 x 18 PST150  
 UV 18 x 12 PST150C  
 PP 18 x 12 5/pk PST150PP

**Guidelines for wearing a mask in public and at work.**

A protective mask or face covering can lower the risk of infecting others and being infected.

- Wash hands before putting on mask.
- Secured with ties or ear loops.
- Mask should cover your mouth, nose and chin.
- Mask should fit snugly against sides of the face.
- Do not touch your face, the mask, or adjust mask while it is on.
- If you touch mask, wash hands right away.
- Remove by hooking the ear loops or ties ONLY.
- Be careful not to touch eyes, nose, or mouth when removing.
- Discard in a closed receptacle.
- To wash and reuse, place in a sealed receptacle to transport. Launder in machine with HOT water (160°F) or soak for five minutes in a solution of two tablespoons of bleach per quart (liter) of water. Rinse well with fresh water and hang to air-dry.
- Wash hands immediately after removing and handling mask.

• **WRONG** (Incorrect ways to wear a mask)

• **DO NOT** (Do not touch your face)

• **DO NOT** (Do not wear a mask that is not secured properly)

• **DO NOT** (Do not wear a mask that is not secured properly)

• **DO NOT** (Do not wear a mask that is not secured properly)

• **DO NOT** (Do not wear a mask that is not secured properly)

HDP 24 x 18 PST145  
 UV 18 x 12 PST145C  
 PP 18 x 12 5/pk PST145PP



# Illness Prevention Signs & Posters (English & Spanish)

**COVID-19** **STOP THE SPREAD OF GERMS**

Help prevent the spread of respiratory diseases like COVID-19.

- Avoid close contact with people who are sick.
- Cover your cough or sneeze with a tissue, then throw the tissue in the trash.
- Wash your hands often with soap and water for at least 20 seconds.
- Avoid touching your eyes, nose, and mouth.
- Clean and disinfect frequently touched objects and surfaces.
- Stay home when you are sick, except to get medical care.
- Wash your hands often with soap and water for at least 20 seconds.

For more information: [www.cdc.gov/COVID19](http://www.cdc.gov/COVID19)

HDP 24 x 18 PST139  
 UV 18 x 12 PST139C  
 PP 18 x 12 5/pk PST139PP

**COVID-19** **DETENGA LA PROPAGACIÓN DE LOS MICROBIOS**

Ayuda a prevenir la propagación de virus respiratorios como el nuevo COVID-19.

- Evita el contacto cercano con las personas enfermas.
- Cubrese la nariz y la boca con un pañuelo cuando se tose o estornude, y luego tírelo a la basura.
- Limpie y desinfecte los objetos (las superficies que se tocan frecuentemente).
- Evite tocarse los ojos, la nariz y la boca.
- Quédese en casa si está enfermo, excepto para hacer atención médica.
- Lávase las manos frecuentemente con agua jabonosa por al menos 20 segundos.

Para obtener más información: [www.cdc.gov/COVID19-es](http://www.cdc.gov/COVID19-es)

HDP 24 x 18 PST140  
 UV 18 x 12 PST140C  
 PP 18 x 12 5/pk PST140PP

**STOP** **Feeling Sick?**

**Stay home when you are sick!**

If you feel unwell or have the following symptoms  
**DO NOT ENTER THE BUILDING**

**FEVER COUGH SHORTNESS OF BREATH**

If you are in the building please leave and contact your health care provider. Then follow-up with your supervisor.

For up to date information on Coronavirus Disease: [cdc.gov/CORONAVIRUS](http://cdc.gov/CORONAVIRUS)

HDP 24 x 18 PST142  
 UV 18 x 12 PST142C  
 PP 18 x 12 5/pk PST142PP

**PARE** **¿Se siente enfermo?**

**¡Quédese en casa si está enfermo!**

Si no se siente bien o tiene alguno de estos síntomas,  
**NO ENTRAR AL EDIFICIO**

**PIEBRE TOS DIFICULTAD PARA RESPIRAR**

Si ya está en el edificio, salga y comuníquese con su proveedor de atención médica. Luego, póngase en contacto con su supervisor.

Para obtener información actualizada sobre la enfermedad por coronavirus: [cdc.gov/CORONAVIRUS](http://cdc.gov/CORONAVIRUS)

HDP 24 x 18 PST142SP  
 UV 18 x 12 PST142CSP  
 PP 18 x 12 5/pk PST142PPSP

**Please read before entering.**

**IF YOU HAVE**

**Fever Cough Shortness of breath**

Please call our office before coming inside.  
 Clinic Phone # \_\_\_\_\_

The clinic staff may ask you to wear a mask or use tissues to cover your cough.

Thank you for helping us keep our patients and staff safe.

For more information: [www.cdc.gov/COVID19](http://www.cdc.gov/COVID19)

HDP 24 x 18 PST143  
 UV 18 x 12 PST143C  
 PP 18 x 12 5/pk PST143PP

**Por favor lea antes de entrar.**

**SI USTED TIENE**

**Fiebre Tos Dificultad Para Respirar**

Por favor llámen a nuestra oficina antes de entrar.  
 # de teléfono de la clínica \_\_\_\_\_

El personal de la clínica puede pedirle que use una máscara o use pañuelos para cubrirse la tos.

Gracias por ayudarnos a mantener seguros a nuestros pacientes y al personal.

Para más información: [www.cdc.gov/COVID19](http://www.cdc.gov/COVID19)

HDP 24 x 18 PST143SP  
 UV 18 x 12 PST143CSP  
 PP 18 x 12 5/pk PST143PPSP

**Use of Cloth Face Coverings to Help Slow the Spread of COVID-19**

**How to Wear Cloth Face Coverings**

- Do not use coverings that—
  - are made of non-woven synthetic fabric
  - are covered with fabric or paper
  - are made of flammable fabric
  - do not fit snugly without obstructing vision
  - are not fully covered and machine washed without damage or change in shape

**CDC on Homemade Cloth Face Coverings**

CDC discourages wearing cloth face coverings in public settings when other social distancing measures are in place. Cloth face coverings have been shown to help reduce the spread of COVID-19 when used in addition to other public health measures.

**Should cloth face coverings be washed or otherwise cleaned regularly? How often should they be washed?**

Yes. They should be washed or cleaned frequently and thoroughly after use.

**How does one safely store/clean a cloth face covering?**

A clean mesh bag or a paper bag is a good way to store a cloth face covering after use.

**How does one safely reuse a used cloth face covering?**

Individuals should be advised to reuse their face coverings only when necessary. Cloth face coverings and masks should be discarded after use.

For more information: [cdc.gov/coronavirus](http://www.cdc.gov/coronavirus)

HDP 24 x 18 PST144  
 UV 18 x 12 PST144C  
 PP 18 x 12 5/pk PST144PP

**Use una cubierta de tela para cara para ayudar a desacelerar la propagación del COVID-19**

**Cómo usar una cubierta de tela para cara**

- Las cubiertas de tela para cara deben—
  - estar hechas de tela que no sea sintética no tejida
  - estar hechas de tela que no sea inflamable
  - estar hechas de tela que no sea sintética no tejida
  - ajustarse bien sin obstruir la visión
  - estar completamente cubiertas y lavadas sin dañarlas o cambiar su forma

**Recomendaciones de los CDC sobre las cubiertas de tela para cara hechas en casa**

Los CDC desaconsejan usar cubiertas de tela para cara en entornos públicos donde se debe mantener una distancia social. Las cubiertas de tela para cara pueden ayudar a reducir la propagación del COVID-19 cuando se usan en adición a otras medidas de salud pública.

**Las cubiertas de tela para cara no deben lavarse ni limpiarse de alguna manera con regularidad. ¿Cómo se limpian?**

Las cubiertas de tela para cara deben lavarse o limpiarse de alguna manera con regularidad. Se recomienda lavarlas con agua jabonosa o limpiarlas con alcohol.

**¿Cómo se deben almacenar/limpiar de manera segura las cubiertas de tela para cara?**

Una bolsa de malla o una bolsa de papel es una buena manera de almacenar una cubierta de tela para cara después de usarla.

**¿Cómo se debe reutilizar de manera segura una cubierta de tela para cara usada?**

Se debe aconsejar a las personas que reutilicen sus cubiertas de tela para cara solo cuando sea necesario. Las cubiertas de tela para cara y las mascarillas deben ser desechadas después de su uso.

Para obtener más información: [cdc.gov/coronavirus](http://www.cdc.gov/coronavirus)

HDP 24 x 18 PST144SP  
 UV 18 x 12 PST144CSP  
 PP 18 x 12 5/pk PST144PPSP

**WASH YOUR HANDS!**

**The easy way to prevent illness**

- Wet hands** / Mojar las manos
- Soap Up** / Enjabonarse
- Scrub hands for 20 seconds** / Frotárselas durante 20 segundos
- Rinse well under running water** / Enjuagárselas bien bajo chorro de agua
- Dry hands** / Secarlas
- Use your towel to turn off water** / Usar la toalla para cerrar el grifo

For more information: [www.cdc.gov/handwashing](http://www.cdc.gov/handwashing)

HDP 18 x 24 PST137  
 UV 12 x 18 PST137C  
 PP 12 x 18 5/pk PST137PP

**FIGHT GERMS BY WASHING YOUR HANDS!**

- Wet your hands**
- Soap**
- Lather and scrub = 20 sec**
- Rinse - 10 sec**
- Dry your hands**
- Turn off tap**

**DON'T FORGET TO WASH:**

- Between your fingers
- Under your nails
- The tops of your hands

For more information: [www.cdc.gov/handwashing](http://www.cdc.gov/handwashing)

HDP 18 x 24 PST138  
 UV 12 x 18 PST138C  
 PP 12 x 18 5/pk PST138PP

MATERIAL	18 x 12	24 x 18
Heavy-Duty Poster Paper (HDP)	-	\$39.29
Unrippable Vinyl (UV)	\$22.36	-
Poster Paper 5/Pk, (PP)	\$11.60	-

**Material Reference Chart:**

**HDP** Heavy-Duty Poster Paper  
**UV** Unrippable Vinyl  
**PP** Poster Paper



ISO670CL Shown



# Labels

## Display labels in high-traffic areas for increased awareness.

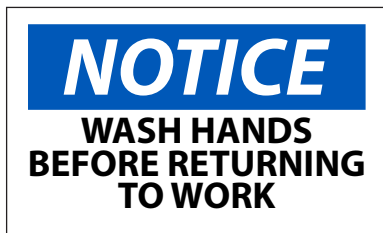
Protect employees and remind visitors and contractors about safe practices within your facility or retail location. Labels are ideal for placement on door entrances or on restroom mirrors. Available with clear background for a clean professional look.



PSV 3 x 5 WH4AP  
PBR 3 x 5 WH4APR



PSV 3 x 5 N362AP



PSV 3 x 5 N43AP  
PBR 3 x 5 N43APR

MATERIAL	QUANTITY	1-24	25+
Pressure Sensitive Removable Vinyl (PBR)	5/Pk	\$11.96	\$10.92
Pressure Sensitive Vinyl (PSV)	5/Pk	\$13.29	\$12.13



2" Diam. ISO270AP  
2" Diam. ISO270CL  
4" Diam. ISO470AP  
4" Diam. ISO470CL  
6" Diam. ISO670AP  
6" Diam. ISO670CL



2" Diam. ISO217AP  
4" Diam. ISO417AP  
6" Diam. ISO617AP

MATERIAL	DESCRIPTION	LIST
Pressure Sensitive Vinyl	2" Diameter, 10/Pk	\$8.20
Pressure Sensitive Vinyl	4" Diameter, 5/Pk	\$18.89
Pressure Sensitive Vinyl	6" Diameter, 5/Pk	\$21.47
Pressure Sensitive Vinyl, Clear	2" Diameter, Clear, 10/Pk	\$8.45
Pressure Sensitive Vinyl, Clear	4" Diameter, Clear, 5/Pk	\$19.47
Pressure Sensitive Vinyl, Clear	6" Diameter, Clear, 5/Pk	\$22.13

Clear versions are reverse printed, and can be placed on the interior of windows and glass doors, while being viewed from the other side.



## Don't see what you need?

Our Customer Support Team is here to help you every step of the way.

**Call us today to get started! 1-800-453-2727**

# Biohazard

Biohazard areas can be dangerous due to many hazards not being visible to the human eye. Clearly mark biohazard areas with proper identification products including floor signs, labels, signs, and barricade tape.

## Double-Sided Floor Signs

- Made of lightweight 4 mm corrugated polyethylene
- Printed on four sides, one message on the outside and another message on the inside
- Water-proof
- Folds easily for convenient storage

19 x 12		
DESCRIPTION	1-11	12+
Warning Biohazard Floor Sign	\$21.87	\$20.04



FS37



## Signs & Labels

Includes the universally recognized biohazard symbol and meet OSHA's marking requirement in standard 1910.1030 for bloodborne pathogens.



PSP 1 x 3, 500/Roll WOL6



PSP 1 x 3, 500/Roll WOL7



PSV 7 x 7 S92P  
RB 7 x 7 S92R



PSV 7 x 7 S93P  
RB 7 x 7 S93R



PSV 4 x 4, 5/Pk S52AP  
PSV 7 x 7 S52P  
RB 7 x 7 S52R  
PSP 3 x 3, 500/Roll S52RL

MATERIALS	1 x 3		3 x 3		4 x 4		7 X 7		10 X 18	
	1-24	25+	1-24	25+	1-24	25+	1-5	6+	1-5	6+
Pressure Sensitive Vinyl (PSV)	-	-	-	-	\$18.89	\$17.31	\$5.89	\$5.11	\$9.87	\$9.07
Pressure Sensitive Paper (PSP)	\$27.91	\$25.56	\$49.62	\$45.49	-	-	-	-	-	-
Rigid Plastic	-	-	-	-	-	-	\$7.71	\$7.11	\$17.04	\$15.60



PSV 10 x 18 SPSA52P  
RB 10 x 18 SPSA52R

## Tags

The use of tags is permitted for compliance, as outlined in OSHA standard 1910.145. Biohazard tags measuring 6" x 3" are versatile when labels may not be the ideal solution.

DESCRIPTION	1-24	25+
Biohazard Tag, Pack Of 25	\$37.36	\$34.27



RPT54

## Barricade Tape

Biohazard barricade tape measures 3" by 1000-ft long with a continuous repeat of the text shown below.



PT40

DESCRIPTION	1-24	25+
Biohazard Barricade Tape	\$22.52	\$18.03





# Social Distancing Floor Signs

A healthy public drives the American economy. Mark your workplace or retail location to encourage social distancing.

Choose a material to suit your needs:

## TexWalk® Floor Sign Material



**0-6 MONTHS**

Removable, rated non-slip, and removes cleanly with no damage to surfaces. Protected with Sign Muscle® coating for additional print protection. Ideal for retail locations and may be used on carpet.

## Temp-Step™ Non-Slip Floor Signs

**6-9 MONTHS**

Temporary floor marking material for when a need likely does not exceed 6-9 months. Print is protected with anti-slip surface. Material is ideal for offices, light industrial and retail locations.

## Walk-On™ Floor Sign Material

**9+ MONTHS**

Solution for high-impact messaging on indoor floors and walls, and outdoor use on smooth surfaces. Longer lasting adhesive with anti-skid surface. Ideal for workplace and industrial locations such as warehouses.

# Social Distancing Floor Signs



TexWalk® 11.75 x 11.75 WFS72TX  
 Temp-Step™ 12 x 12 WFS72A  
 Walk-On™ 12 x 12 WFS72



TexWalk® 11.75 x 11.75 WFS73TX  
 Temp-Step™ 12 x 12 WFS73A  
 Walk-On™ 12 x 12 WFS73



TexWalk® 11.75 x 11.75 WFS71TX  
 Temp-Step™ 12 x 12 WFS71A  
 Walk-On™ 12 x 12 WFS71



TexWalk® 7.625 x 19.625 WFS74TX  
 Temp-Step™ 8 x 20 WFS74A  
 Walk-On™ 8 x 20 WFS74



TexWalk® 7.625 x 19.625 WFS75TX  
 Temp-Step™ 8 x 20 WFS75A  
 Walk-On™ 8 x 20 WFS75



TexWalk® 11.75 x 11.75 WFS79TXRD  
 Temp-Step™ 12 x 12 WFS79ARD  
 Walk-On™ 12 x 12 WFS79RD



TexWalk® 7.625 x 19.625 WFS76TX  
 Temp-Step™ 8 x 20 WFS76A  
 Walk-On™ 8 x 20 WFS76



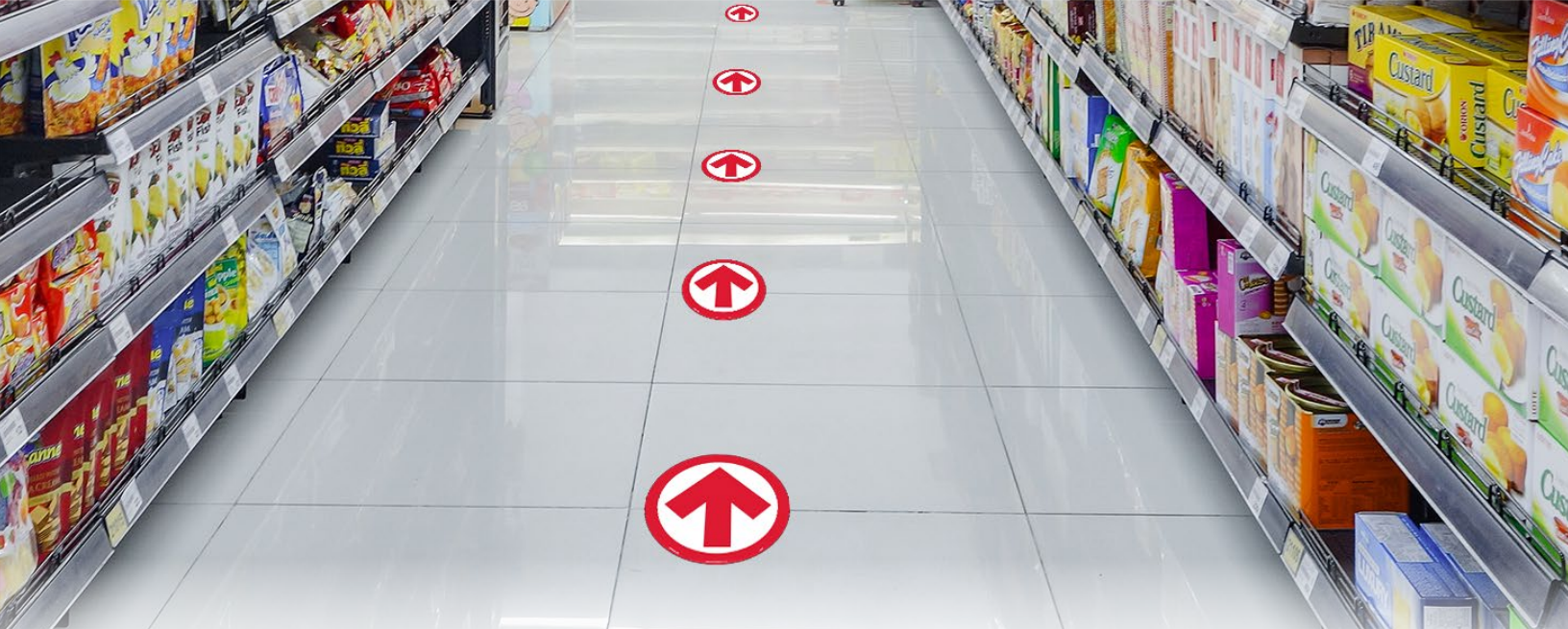
TexWalk® 7.625 x 19.625 WFS77TX  
 Temp-Step™ 8 x 20 WFS77A  
 Walk-On™ 8 x 20 WFS77



TexWalk® 11.75 x 11.75 WFS79TXYL  
 Temp-Step™ 12 x 12 WFS79AYL  
 Walk-On™ 12 x 12 WFS79YL

	11.75 x 11.75		12 x 12		7.625 x 19.625		8 x 20	
MATERIAL	1-11	12+	1-11	12+	1-11	12+	1-11	12+
TexWalk®	\$25.56	\$23.30	-	-	\$23.02	\$20.93	-	-
Temp-Step™	-	-	\$26.76	\$24.35	-	-	\$24.09	\$22.06
Walk-On™	-	-	\$27.78	\$25.33	-	-	\$25.00	\$22.93





# Social Distancing Floor Signs

8" DIAM.



- TexWalk® WFS83TXRD
- TexWalk® WFS83TXRD10 10pk
- Temp-Step™ WFS83ARD
- Temp-Step™ WFS83ARD10 10pk
- Walk-On™ WFS83RD
- Walk-On™ WFS83RD10 10pk



- TexWalk® WFS83TXYL
- TexWalk® WFS83TXYL10 10pk
- Temp-Step™ WFS83AYL
- Temp-Step™ WFS83AYL10 10pk
- Walk-On™ WFS83YL
- Walk-On™ WFS83YL10 10pk



- TexWalk® WFS82TX
- TexWalk® WFS82TX10 10pk
- Temp-Step™ WFS82A
- Temp-Step™ WFS82A10 10pk
- Walk-On™ WFS82
- Walk-On™ WFS8210 10pk



- TexWalk® WFS84TXRD
- TexWalk® WFS84TXRD10 10pk
- Temp-Step™ WFS84ARD
- Temp-Step™ WFS84ARD10 10pk
- Walk-On™ WFS84RD
- Walk-On™ WFS84RD10 10pk



- TexWalk® WFS84TXYL
- TexWalk® WFS84TXYL10 10pk
- Temp-Step™ WFS84AYL
- Temp-Step™ WFS84AYL10 10pk
- Walk-On™ WFS84YL
- Walk-On™ WFS84YL10 10pk



MATERIAL	1-11	12+
TexWalk®	\$9.29	\$8.45
TexWalk® 10 Pack	\$79.02	\$71.85
Temp-Step™	\$10.11	\$9.20
Temp-Step™ 10 Pack	\$85.93	\$78.20
Walk-On™	\$12.13	\$11.04
Walk-On™ 10 Pack	\$103.95	\$94.60



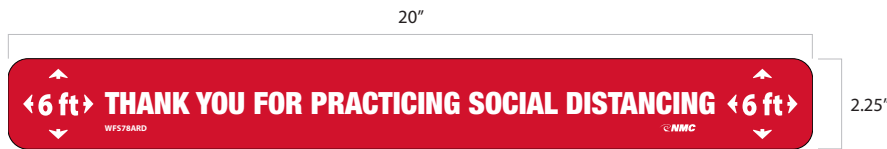
**CUSTOM LEGENDS AVAILABLE**  
**Call us today to get started!**  
**1-800-453-2727**



# Social Distancing Floor Marking Strips

Create a clear directive for any situation requiring social distance. Let visitors know where to wait to keep an appropriate distance, decreasing confusion and the transmission of airborne illness.

MATERIAL	1-11	12+
TexWalk®	\$5.89	\$5.36
TexWalk® 10 Pack	\$50.07	\$45.59
Temp-Step™	\$6.22	\$5.65
Temp-Step™ 10 Pack	\$52.85	\$48.07
Walk-On™	\$6.84	\$6.22
Walk-On™ 10 Pack	\$58.11	\$52.85



- TexWalk® WFS78TXRD
- TexWalk® WFS78TXRD10 10 pk
- Temp-Step™ WFS78ARD
- Temp-Step™ WFS78ARD10 10 pk
- Walk-On™ WFS78RD
- Walk-On™ WFS78RD10 10 pk



- TexWalk® WFS78TXYL
- TexWalk® WFS78TXYL10 10 pk
- Temp-Step™ WFS78AYL
- Temp-Step™ WFS78AYL10 10 pk
- Walk-On™ WFS78YL
- Walk-On™ WFS78YL10 10 pk



- TexWalk® WFS80TX
- TexWalk® WFS80TX10 10 pk
- Temp-Step™ WFS80A
- Temp-Step™ WFS80A10 10 pk
- Walk-On™ WFS80
- Walk-On™ WFS8010 10 pk



- TexWalk® WFS81TX
- TexWalk® WFS81TX10 10 pk
- Temp-Step™ WFS81A
- Temp-Step™ WFS81A10 10 pk
- Walk-On™ WFS81
- Walk-On™ WFS8110 10 pk

# Distancing & Crowd Control

Waterproof and wear resistant 6 mil vinyl tape applies easily to clean, smooth, dry surfaces with a synthetic rubber resin adhesive and has a temp resistance of -20°F to 175°F. Perfect for:

- Color-coding
- Aisle marking
- Duct sealing
- Abrasion protection
- Joint sealing
- Pipe wrapping
- Light bundling
- Packing
- Safety marking
- Social Distancing



## Solid Color Safety Tapes

COLOR	SIZE	PART NO.	1-11	12+
BLACK	2" x 108'	T214	\$11.73	\$9.96
	3" x 108'	T244	\$16.80	\$14.20
WHITE	2" x 108'	T206	\$11.73	\$9.96
	3" x 108'	T236	\$16.80	\$14.20
ORANGE	2" x 108'	T209	\$11.73	\$9.96
	3" x 108'	T239	\$16.80	\$14.20
BLUE	2" x 108'	T210	\$11.73	\$9.96
	3" x 108'	T240	\$16.80	\$14.20
GREEN	2" x 108'	T208	\$11.73	\$9.96
	3" x 108'	T238	\$16.80	\$14.20
YELLOW	2" x 108'	T205	\$11.73	\$9.96
	3" x 108'	T235	\$16.80	\$14.20
RED	2" x 108'	T204	\$11.73	\$9.96
	3" x 108'	T234	\$16.80	\$14.20
BROWN	2" x 108'	T212	\$11.73	\$9.96
	3" x 108'	T242	\$16.80	\$14.20



## Striped Safety Tapes

COLOR	SIZE	PART NO.	1-11	12+
	2" x 54'	T20218	\$13.13	\$11.65
	2" x 108'	T20236	\$25.80	\$22.22
	3" x 54'	T22018	\$18.87	\$16.05
	3" x 108'	T22036	\$37.02	\$31.42
	2" x 54'	T20718	\$13.13	\$11.65
	2" x 108'	T20736	\$25.80	\$22.22
	2" x 54'	T20118	\$13.13	\$11.65
	2" x 108'	T20136	\$25.80	\$22.22
	3" x 54'	T22118	\$18.87	\$16.05
	3" x 108'	T22136	\$37.02	\$31.42
	2" x 54'	T20318	\$13.13	\$11.65
	2" x 108'	T20336	\$25.80	\$22.22
	3" x 54'	T22318	\$18.87	\$16.05
	3" x 108'	T22336	\$37.02	\$31.42
	2" x 54'	T20418	\$13.13	\$11.65
	2" x 108'	T20436	\$25.80	\$22.22
	3" x 54'	T22418	\$18.87	\$16.05
	3" x 108'	T22436	\$37.02	\$31.42
	2" x 54'	T20918	\$13.13	\$11.65
	2" x 108'	T20936	\$25.80	\$22.22
	3" x 54'	T22918	\$18.87	\$16.05
	3" x 108'	T22936	\$37.02	\$31.42
	2" x 54'	T20818	\$13.13	\$11.65
	2" x 108'	T20836	\$25.80	\$22.22
	3" x 54'	T22818	\$18.87	\$16.05
	3" x 108'	T22836	\$37.02	\$31.42

## Marking Tape Floor Applicator

Mark specific areas to promote safety.

- Stable, stand-alone design
- Holds up to a 4" x 180' roll of floor marking or a 4" x 150' roll of pavement marking tape
- Large wheel base for smooth tape placement
- Heavy duty construction
- Minimal assembly required



PART NO.	PRICE
FTA01	\$223.29



# Distancing & Crowd Control

Built to withstand industrial traffic, NMC's line of 30 & 50 mil thick floor marking tapes provide a long-lasting solution that goes down easy and cleans up just as well.

- Designed for long-term floor marking
- Smooth, easy to clean, slip resistant
- Dual beveled edges allow industrial wheels to roll over smoothly (50 mil option)
- Leaves no residue when removed
- Faster to install than paint, with zero downtime



## Heavy-Duty Floor Tape

- 50 mil thickness
- Material: PVC



## Durable Floor Tape

- 30 mil thickness
- Material: Vinyl



COLOR	PART NO.	SIZE	LIST
YELLOW	DT2Y	2" X 100'	\$125.00
	DT4Y	4" X 100'	\$193.00
RED	DT2R	2" X 100'	\$125.00
	DT4R	4" X 100'	\$193.00
BLUE	DT2B	2" X 100'	\$125.00
	DT4B	4" X 100'	\$193.00
GREEN	DT2G	2" X 100'	\$125.00
	DT4G	4" X 100'	\$193.00

COLOR	PART NO.	SIZE	1-11	12+
YELLOW	HDT2Y	2" X 100'	\$235.00	\$230.00
	HDT3Y	3" X 100'	\$262.00	\$258.00
	HDT4Y	4" X 100'	\$272.00	\$268.00
RED	HDT2R	2" X 100'	\$235.00	\$230.00
	HDT3R	3" X 100'	\$262.00	\$258.00
	HDT4R	4" X 100'	\$272.00	\$268.00
BLUE	HDT2B	2" X 100'	\$235.00	\$230.00
	HDT3B	3" X 100'	\$262.00	\$258.00
	HDT4B	4" X 100'	\$272.00	\$268.00
GREEN	HDT2G	2" X 100'	\$235.00	\$230.00
	HDT3G	3" X 100'	\$262.00	\$258.00
	HDT4G	4" X 100'	\$272.00	\$268.00
BLACK	HDT2BK	2" X 100'	\$235.00	\$230.00
	HDT3BK	3" X 100'	\$262.00	\$258.00
	HDT4BK	4" X 100'	\$272.00	\$268.00
ORANGE	HDT2OR	2" X 100'	\$235.00	\$230.00
	HDT3OR	3" X 100'	\$262.00	\$258.00
	HDT4OR	4" X 100'	\$272.00	\$268.00
 YELLOW BLACK STRIPE	HDT2BKYL	2" X 100'	\$257.00	\$253.00
	HDT3BKYL	3" X 100'	\$284.00	\$280.00
	HDT4BKYL	4" X 100'	\$310.00	\$306.00

## Footprints

Ideal for directing foot traffic and creating pathways.

- Includes 25 per pack
- 50 mil thick for long-term application & use
- Designed to withstand industrial traffic
- Rubber based pressure sensitive adhesive
- Service temp range -10°F to 150°F
- Application temp range 40°F to 150°F



3.5" x 9.5"

PART NO.	COLOR	LIST
LN114	Red	\$98.45
LN115	Yellow	\$98.45
LN116	Blue	\$98.45
LN117	Green	\$98.45
LN118	White	\$98.45

# Projector & Illness Prevention Lenses

Communicate important safety messages in a highly visible and impactful way. Great for loading docks, manufacturing floors, retail locations & more.

- Perfect for high traffic areas (pedestrian, forklift & other)
- Zero wear and tear vs. traditional floor signs
- Portable & easy to install
- Fan cooled technology prevents overheating
- Projects up to 262 ft
- Remote control and mounting kit included



PRODUCT	LIST
Projector w/ (1) Stock Lens	\$849.00
Stock Lens	\$67.69/ea.
<b>Custom Lens</b> No order minimums! 1, 2 or full color*	\$129.00/ea

\*21 day lead time from time of order



**Wait Here**

Projector & Lens VSP5  
Lens Only VSPL5



**6 Feet**

Projector & Lens VSP6  
Lens Only VSPL6



**Social Distancing**

Projector & Lens VSP7  
Lens Only VSPL7

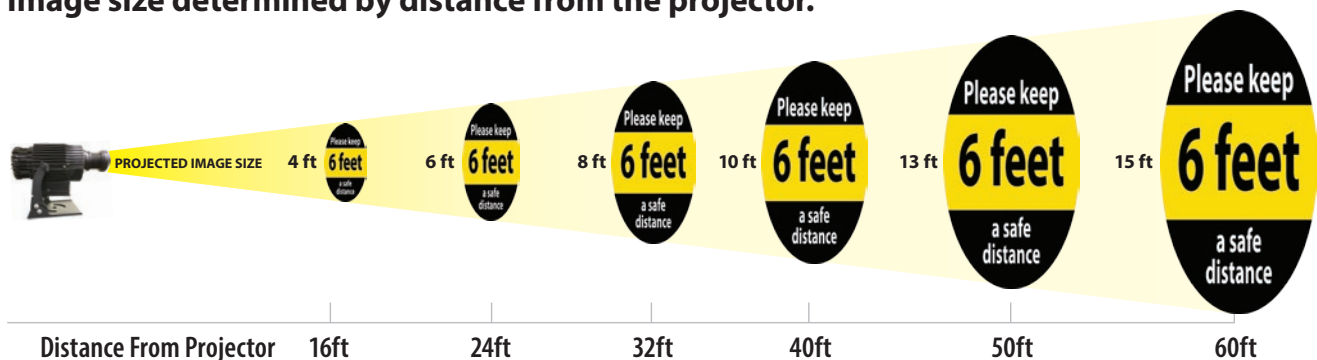


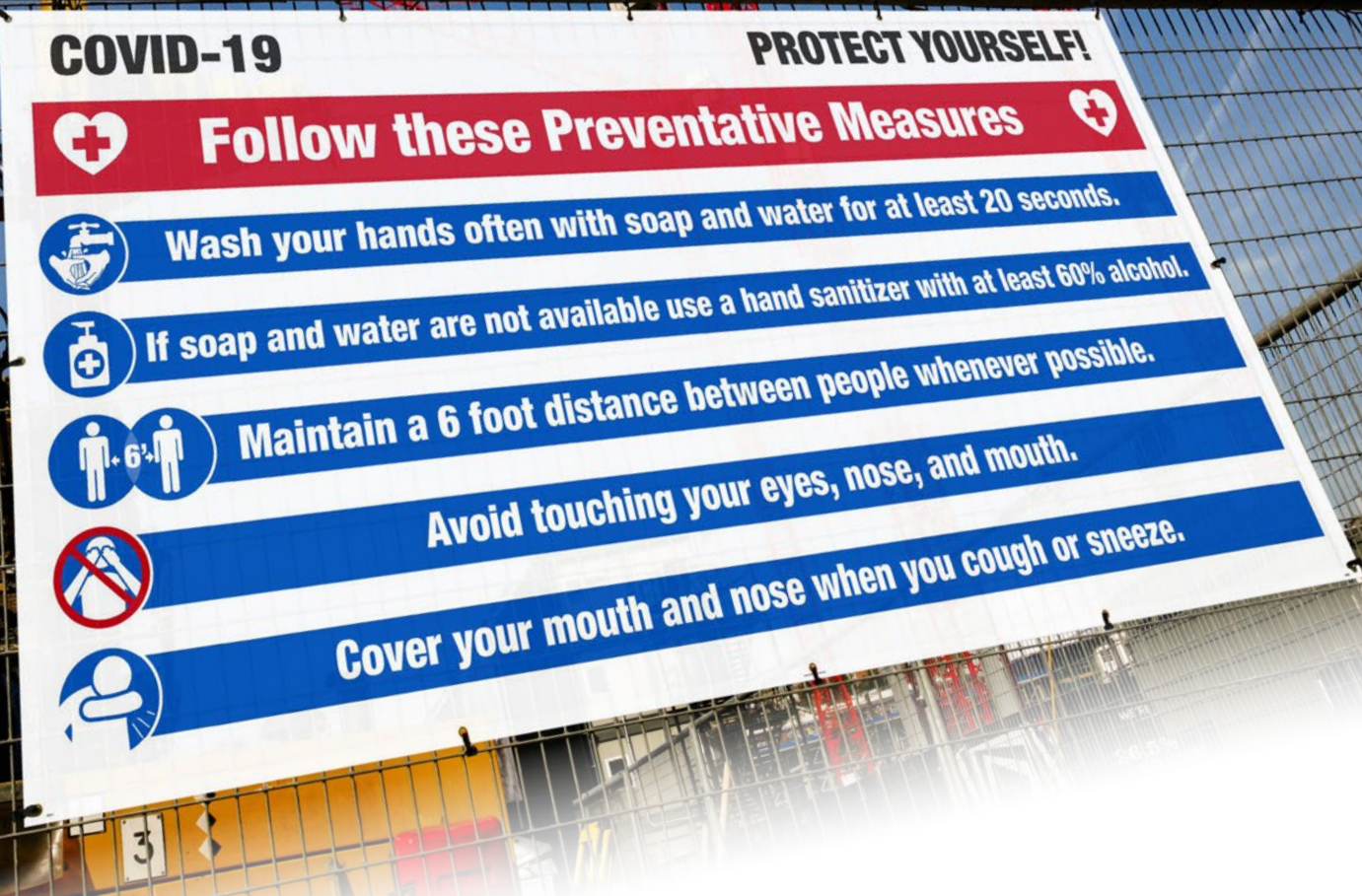
**No Handshakes**

Projector & Lens VSP8  
Lens Only VSPL8

## Distance Chart

Image size determined by distance from the projector.





# COVID-19 Mesh Fence Banners

Keep workers and visitors informed and protected by conveying important COVID-19 safety information visible at all times.

- Durable mesh banner with reinforced grommets
- Mesh material allows for air flow
- Ideal for job site/facility use
- Sized specifically for use on fencing



6' x 12' English BT61  
 5' x 10' English BT561  
 6' x 12' Spanish SPBT61  
 5' x 10' Spanish SPBT561

SIZE	LIST
6' X 12'	\$168.98
5' X 10'	\$148.97



6' x 12' English BT62  
 5' x 10' English BT562  
 6' x 12' Spanish SPBT62  
 5' x 10' Spanish SPBT562





# A-Frame Signs & Stands

## Temporary Directional Signage for Outdoor Use

NMC's Deluxe A-Frame Sidewalk & Parking lot signs are ideal for directing pedestrian and motorized traffic.

- Stand Measures 45" x 25"
- Sign Measures 36" x 24"
- Includes one sign
- Double-sided (stand can hold two signs, one on each side) – additional signs sold separately
- High-density impact plastic
- Sign made of corrugated plastic (sign is removable)
- No tools, tape or screws needed – simply fold-out and go
- Custom messages available

DESCRIPTION	LIST
Sign & Stand	\$191.30

DESCRIPTION	LIST
Sign	\$48.16



Sign & Stand: SFS114C-KIT  
Sign Only: SFS114C



Sign & Stand: SFS115C-KIT  
Sign Only: SFS115C



Sign & Stand: SFS116C-KIT  
Sign Only: SFS116C



Sign & Stand: SFS110C-KIT  
Sign Only: SFS110C



Sign & Stand: SFS111C-KIT  
Sign Only: SFS111C



Sign & Stand: SFS112C-KIT  
Sign Only: SFS112C



Sign & Stand: SFS113C-KIT  
Sign Only: SFS113C



# THE LAST SIGN YOU WILL EVER BUY™

Sign Muscle® is Polymer Coating that preserves the life of your NMC signs and labels.



Resists Fading!



Protects Against Harsh Chemicals & Corrosion



Make Clean Up Easy!



Easily Restored Like New

**Protection Applied Free, Guaranteed for Life!**

Go Beyond Standard...

# CUSTOMIZE IT!

Turn this



into this!



Whatever your regulations or standards, design products that meet **YOUR** needs, free of charge. Choose from a range of quality materials sourced in the U.S.A., protected with our one of a kind Sign Muscle® coating to make it last.

- No charge for artwork
- 2 Day turnaround time
- Free Sign Muscle® protective coating
- Made in the U.S.A.
- No minimums

***Our customer service team is always here to help.***



Call us today to get started!  
**1-800-453-2727**