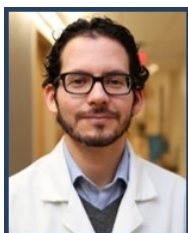


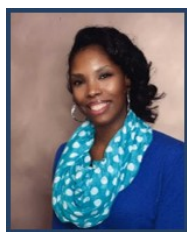
**Beyond Screen and Refer:**

What SDOH Care Teams Serving Immigrants Need to Know Today

Wednesday, November 7, 2018 | 8:30 AM – 4:30 PM | Boston Convention and Exhibition Center

**BIOS****Conference Course Directors****Medical:****Pablo Buitron de la Vega, MD, MSc***Primary Care Provider, Boston Medical Center**Associate Program Director, BU School of Medicine Preventative Medicine Residency**Assistant Professor of Medicine, Boston University School of Medicine*

Pablo Buitron de la Vega, MD, MSc is a primary care provider trained in internal medicine and preventive medicine with a longstanding interest in patients' attitudes and beliefs about health, health care, and their health-related social needs (HRSN). He provides clinical care to a majority Hispanic patient population, an underserved minority in healthcare. He is also the Associate Program Director of the Boston University School of Medicine (BUSM) Preventative Medicine Residency and an Assistant Professor of Medicine. He is the clinical lead for THRIVE, a clinical strategy that systematically screens for HRSN in all patients that present to primary care and refers them to resources when requested, at Boston Medical Center. In this role, he also leads the evaluation of the effects of systematic screening and referral of patients to address their HRSN.

**Baraka Floyd, MD, MSc***Clinical Assistant Professor, Division of General Pediatrics, Stanford School of Medicine**Co-Medical Director, Peninsula Family Advocacy Program: A Medical Legal Partnership*

Dr. Baraka D. Floyd is a pediatrician at Stanford School of Medicine and co-medical director of the Peninsula Family Advocacy Program, Stanford's Medical-Legal Partnership. She has successfully implemented local initiatives to address social determinants of health, including: Post-Partum/Perinatal Depression Screening, Pediatrician Driven Universal Social Determinants Screening, and a diaper distribution program. At Lucile Packard Children's Hospital Stanford, Dr. Floyd is spearheading an initiative for inpatient food insecurity screening. She also serves as a medical consultant for Project DULCE (Developmental Understanding and Legal Collaboration for Everyone), an evidence-based intervention to address social determinants of health.

Dr. Floyd is recognized within her institution for her advocacy efforts, teaching, and interdisciplinary partnerships throughout Stanford and the local community. Her clinical and academic interests include: social determinants of health, community engaged research to improve systems of care and support for underserved populations, mental health, fostering cultural curiosity in medical students and residents, and diversity and inclusion.



**Meghan Geary, MD**

*Assistant Professor of Medicine, Clinician Educator  
Center for Primary Care, Rhode Island Hospital/Brown University*

Meghan Geary, MD is a general internal medicine doctor with an interest in the intersection of women's health and social determinants of health. She obtained a BA in Biology and Anthropology at Washington University in St Louis and then did HIV research and program management in San Francisco, Boston and South Africa. Her interest in refugee health started prior to medical school when she coordinated the Boston Medical Center Refugee Health Assessment Program. In medical school at Albany Medical College, she mentored a refugee family from Burma. Meghan moved to Providence, RI for residency in General Internal Medicine at Brown University and stayed on as faculty at the Center for Primary Care.

**Nursing:**

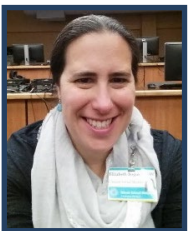


**Julie Mottl-Santiago, CNM, MPH**

*Director, Midwifery Services, Boston Medical Center  
Assistant Professor, Boston University School of Medicine*

Julie Mottl-Santiago is Director of Midwifery Services at Boston Medical Center. She has been a practicing midwife at BMC for the past fifteen years, where she trains midwives, residents and medical students. Her research and policy work focuses on expanding access to community health workers and doulas for low-income childbearing women. Currently she is Principle Investigator for a W.K. Kellogg Foundation funded randomized trial to evaluate outcomes associated with the Best Beginnings for Babies program, a Birth Sister doula Program intervention that includes consultation with Medical-Legal Partnership to identify and remedy social determinants of health impacting maternal and child health. Ms. Mottl-Santiago also currently sits on the Massachusetts Department of Public Health's Perinatal Advisory Committee as representative of the American College of Nurse Midwives Massachusetts State Affiliate. Julie received her BA from Tufts University, BSN from Simmons College and Masters in Public Health and Midwifery Certificate from Boston University. She is currently a doctoral candidate at the Boston University School of Public Health.

**Social Work:**



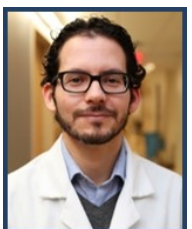
**Elizabeth Bogus, LCSW**

*Clinical Social Worker, Hasbro Children's Hospital*

Beth Bogus is a Clinical Social Worker at Hasbro Children's Hospital's Primary Care Clinic. She has spent the majority of her professional career working with children and families decreasing stress in the home. Ms. Bogus has a bachelor's degree from Pennsylvania State University in Human Development and Family Studies and graduated from Bridgewater State College with a Masters of Social Work in 2009. In addition to her current role she has worked as the Family Support Coordinator at The Arc of Bristol County and was the Children's Service Coordinator at the MA Department of Developmental Services.

Plenary Panel A  
***Immigration Status as a Social Determinant of Health***

**Moderator:**



**Pablo Buitron de la Vega, MD, MSc**

*Primary Care Provider, Boston Medical Center  
Associate Program Director, BU School of Medicine Preventative Medicine Residency  
Assistant Professor of Medicine, Boston University School of Medicine*

See page 1.

## Panelists:

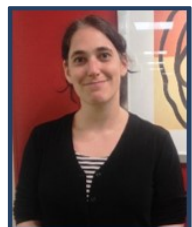


### **Khanh T. Dinh, PhD**

*Professor of Psychology, University of Massachusetts Lowell*

Dr. Dinh received her doctorate in Clinical Psychology from the University of Washington and completed her NIMH Postdoctoral Fellowship at Arizona State University's Prevention Research Center. Her primary areas of academic expertise are in clinical, community, and feminist psychology. She is particularly interested in the effects of cultural changes and stress in the lives of immigrant individuals and families, as well as the effects of intercultural contacts and social injustice on human development. Her research work has been published in various academic journals, such as the American Journal of Community Psychology, Journal of Abnormal Child Psychology, Journal of Family Psychology, Journal of Cultural Diversity, and Journal of Immigrant and Refugee Studies.

She is a recipient of the NIH Health Disparities Service Award and NIMH National Research Service Award. She has served as a consultant for the National Institute of Mental Health and Health Resources and Services Administration, and on the Editorial Boards of the Asian American Journal of Psychology and Women & Therapy. She is a Past President of the Section on the Psychology of Asian Pacific American Women and a Fellow of the American Psychological Association and the Society for the Psychology of Women.



### **Kara Hurvitz, JD, MSW**

*Program Manager, MLPB*

Kara joined MLPB as an attorney serving the Department of Pediatrics at Boston Medical Center, continuing one of our organization's oldest and most formative partnerships. Prior to joining MLPB, Kara worked as a Social Services Advocate at the Committee for Public Counsel Services. In that generalist role, she assisted court-involved individuals and families with a broad range of high-stakes needs at the intersection of civil and criminal law. Kara is a graduate of Pennsylvania State University, Boston College Law School, and Boston College Graduate School of Social Work.



### **Halim Moris, Esq.**

*Attorney, Moris & O'Shea, LLC*

Areas of Practice: Criminal Defense, Immigration, Personal Injury, Divorce  
Bar Admission: Massachusetts Bar, U.S. district Court for the Massachusetts District, 1<sup>st</sup> Circuit Court of Appeals, Board of Immigration Appeals (BIA), Executive Office of Immigration Review (EOIR), Bureau of Citizenship and Immigration Services (USCIS)

Professional Associations and Memberships: Member of the Board of Directors of the National Lawyers Guild (NLG), American Bar Association (ABA), Boston Bar Association (BBA), Massachusetts Bar Association (MBA), American Immigration Lawyers Association (AILA)

Education: Boston University, BS  
Suffolk University Law School, JD

Accomplishments: Selected as one of Massachusetts' "Super Lawyers" by Law and Politics Magazine and Boston Magazine, May 2006; Selected as an "up and coming lawyer" by Massachusetts Lawyers Weekly, December 2005; Awarded Suffolk University Law School's "Alumni award for distinguished contributions to legal policy and practice," November 2005; Taught immigration law and policies to other attorneys at the Massachusetts Continuing Legal Education (MCLE); Published a number of articles on immigration and human rights law in various legal journals; Conducted various legal clinics and community trainings throughout the State of Massachusetts.



**Leah Zallman, MD, MPH**

*Assistant Professor of Medicine, Harvard Medical School  
Director of Research, Institute for Community Health  
Internist, Cambridge Health Alliance*

Leah Zallman is the Director of Research at the Institute for Community Health, an assistant professor of medicine at Harvard Medical School and a primary internist at Cambridge Health Alliance, where she cares for a largely immigrant population. Leah’s research focuses on the social determinants of health, with a focus on immigrants’ access to care and healthcare financing. Her research on immigrant healthcare financing has appeared in Health Affairs and the Journal of General Internal Medicine, and has been cited extensively in the mainstream media. Leah received her MPH from Harvard School of Public Health, her MD from New York University School of Medicine and her BA from Swarthmore College. She completed her internship and residency at Boston Medical Center.

**Beyond Screen and Refer - Training Session 1a  
Immigration Status and Implications for Housing, Food & Transportation Security**

**Co-Trainers:**



**Jeannine Casselman, JD, MA**

*Program Manager, MLPB*

Attorney Jeannine Casselman is a Program Manager at MLPB. She was previously with the Rhode Island Center for Law and Public Policy and served as the Program Director for the Rhode Island Medical-Legal Partnership from 2011-2016. Ms. Casselman graduated from Roger Williams University School of Law in 2009 where she focused on public interest law. She interned with the Rhode Island Commission for Human Rights, South Coastal Counties Legal Services and the Community Mediation Center of Rhode Island.



**Daniel Hyman, JD**

*Program Manager, MLPB*

Daniel Hyman is a Staff Attorney at MLPB. Prior to joining MLPB, he was a litigator focused on foreclosure defense and consumer protection in both private practice and legal services. During two stints as an AmeriCorps member, he conducted fair housing litigation and supported public health approaches to HIV/AIDS prevention. Dan is a graduate of Brandeis University and Northeastern University School of Law. As a law student, he interned with the United States Department of Labor, the National Labor Relations Board, and Community Catalyst, as well as with a mid-sized private firm.



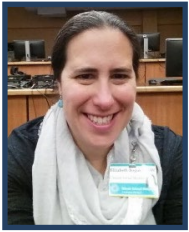
**Carinel LeGrand, MPA**

*Connect for Health Program Coordinator  
Lifespan Community Health Institute*

Carinel LeGrand, MPA, Program Coordinator of Connect for Health works to connects low-income patients of Hasbro Pediatric Primary Care with the basic resources they need to be healthy. A graduate of The Public Administration Program at Roger Williams University Mrs. LeGrand believes health equity is possible for Rhode Island through interdisciplinary advocacy and coordination. She has led a mission driven career through managing several social service programs in the areas of affordable housing, maternal and child home visiting, and income supports. Her passion is to drive progressive programming which empowers the individual and equips Rhode Island policy makers with the information necessary to address the needs of our diverse inner city communities in Providence.

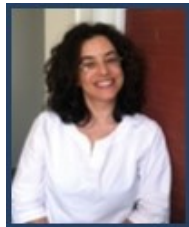
Beyond Screen and Refer - Training Sessions 1b and 2b  
**Strengths-Based SDOH Screening: Exhibiting Structural Competence  
When Communicating with Marginalized Populations**

**Co-Trainers:**



**Elizabeth Bogus, LCSW**  
*Clinical Social Worker, Hasbro Children's Hospital*

See page 2.



**JoHanna Flacks, JD**  
*Legal Director, MLPB*

JoHanna Flacks is the Legal Director at MLPB and in this role links MLPB's workforce capacity-building services to broader opportunities to inform public policy in ways that will reduce health disparities. Before joining MLPB, JoHanna was in private practice, and provided *pro bono* services to the Cape Cod Anti-Discrimination Task Force in its successful campaign to establish the Barnstable County Human Rights Commission. Prior to that, she served as Assistant General Counsel for the Boston Public Health Commission and Senior Investigator for the Boston Fair Housing Commission. She began her career as a labor-side employment discrimination litigation associate. JoHanna graduated from the University of Oklahoma College of Law and Brandeis University.



**Baraka Floyd, MD, MSc**  
*Clinical Assistant Professor, Division of General Pediatrics, Stanford School of Medicine*  
*Co-Medical Director, Peninsula Family Advocacy Program: A Medical Legal Partnership*

See page 1.



**Renée Cammarata Hamilton, MSW, MPA**  
*Director, Health Improvement Team*  
*Department of Community Health Improvement at Cambridge Health Alliance*  
*Clinical Instructor, Tufts University School of Medicine*

Renée Cammarata Hamilton, MSW, MPA is the Director of the Health Improvement Team at Cambridge Health Alliance and a Clinical Instructor and co-director of the Community Health and Equity curriculum at Tufts University School of Medicine. She brings deep experience in the public health and community development fields, both stateside and abroad. She has extensive experience in health equity and racial justice training, data collection, evaluation, community health improvement, grant writing, project management and coalition building. In her role at CHA, Renée liaises with community members as well as municipal, school, legislative and NGO leadership on projects with the goal of improving community and public health, especially for historically under resourced populations. She also leads internal efforts on identifying and developing internal and external resources that can be mobilized to positively impact patients' Social Determinants/Influencers of Health. Prior to her work stateside, she served as a global health consultant conducting assessments with USAID and United Nations Development Program (UNDP) funded projects in South Asia and East Africa.



**Co-Trainers:**



**Jeannine Casselman, JD**  
*Program Manager, MLPB*

Attorney Jeannine Casselman is a Program Manager at MLPB. She was previously with the Rhode Island Center for Law and Public Policy and served as the Program Director for the Rhode Island Medical-Legal Partnership from 2011-2016. Ms. Casselman graduated from Roger Williams University School of Law in 2009 where she focused on public interest law. She interned with the Rhode Island Commission for Human Rights, South Coastal Counties Legal Services and the Community Mediation Center of Rhode Island.



**Daniel Hyman, JD**  
*Program Manager, MLPB*

Daniel Hyman is a Staff Attorney at MLPB. Prior to joining MLPB, he was a litigator focused on foreclosure defense and consumer protection in both private practice and legal services. During two stints as an AmeriCorps member, he conducted fair housing litigation and supported public health approaches to HIV/AIDS prevention. Dan is a graduate of Brandeis University and Northeastern University School of Law. As a law student, he interned with the United States Department of Labor, the National Labor Relations Board, and Community Catalyst, as well as with a mid-sized private firm.



**Gloria Greenfield**  
*Director of Immigration Advocacy, Sojourner House*

Born and raised in Venezuela, Gloria Greenfield has been living in the United States since April of 2001. She began her career in the immigration law field in 2005. She joined Sojourner House in April of 2011, and in June of 2012, Gloria created Sojourner House's immigration advocacy program—the first of its kind at a domestic violence agency in Rhode Island, by obtaining the agency's recognition from the Board of Immigration Appeals. This program, which has assisted over 300 individuals since its inception, allows victims of domestic violence, sexual assault and human trafficking to receive free or low-cost immigration legal assistance, in addition of accessing vital services such as individual and group advocacy, shelter, transitional housing, and sexual health education among other services. Gloria is fully accredited by the Department of Justice, which allows her to represent undocumented victims of domestic violence, sexual assault and human trafficking in their immigration cases before United States Citizenship and Immigration Services—including U and T visas, VAWA self-petitions, asylums and more; and she also represents victims in removal proceedings at the Boston Immigration Court. She lives in Coventry, Rhode Island with her husband and her two children.

Plenary Panel B  
**With Screening Comes Responsibility:  
Complex Immigration Considerations in Organizational SDOH Documentation Protocols**

**Moderator:**



**Elizabeth Tobin-Tyler, JD, MA**

*Assistant Professor of Family Medicine, Alpert Medical School and of Health Services, Policy and Practice at the Brown University School of Public Health*

Elizabeth Tobin-Tyler, JD, MA, is Assistant Professor of Family Medicine at the Alpert Medical School and of Health Services, Policy and Practice at the Brown University School of Public Health. She teaches in the areas of health policy, health equity and public health law and ethics. Her research focuses on the role of law and policy in the social determinants of health, community-based and health system interventions that address health disparities, and interprofessional medical-legal education.

Ms. Tobin-Tyler is a national expert in the development of medical-legal partnerships, which integrate medicine, public health and legal services to identify, address and prevent health-harming social and legal needs of patients, clinics and populations. She is senior editor and a contributor to the first textbook on the topic, *Poverty, Health and Law: Readings and Cases for Medical-Legal Partnership*, published in 2011. In 2013, she was awarded the Distinguished Advocate award by the National Center for Medical-Legal Partnership for her work in promoting the medical-legal partnership model and for developing interprofessional medical-legal education. In 2014, Ms. Tobin-Tyler was selected as a Robert Wood Johnson Foundation Future of Public Health Law Education Faculty Fellow. Her new book, *Essentials of Health Justice* (Jones & Bartlett), was published on April 3, 2018.

**Panelists:**



**Marissa Daley, MPA**

*Program Specialist, The Children's Trust*

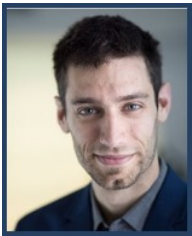
Marissa has worked at the Children's Trust providing technical assistance and support to Healthy Families Massachusetts programs serving young first-time parents for the past six years. She co-facilitates the Healthy Families Massachusetts Advisory Think Tank, leads the annual statewide policy change process, is the principal trainer for the network's Home Visitor Documentation Training, sits on the MA MIECHV CQI committee and is a Healthy Families America Peer Reviewer. Marissa received a Bachelor of Psychology and Master of Public Administration from Clark University. Experience includes database design, creation of technical manuals and development of quality assurance and continuous quality improvement processes.



**Kara Hurvitz, JD, MSW**

*Program Manager, MLPB*

See page 3.



**Julian Rodríguez-Drix, MPH candidate**

*Asthma Program Manager, Rhode Island Department of Health*

Julian Rodríguez-Drix is the Asthma Program Manager at the Rhode Island Department of Health, where he works to promote health equity in asthma by focusing on the socioeconomic and environmental factors that cause health inequities. He joined the field of public health from a community-based environmental justice advocacy background, and believes in applying the power of public health in support of transformative movements for equity and justice. Julian is an MPH candidate at Johns Hopkins Bloomberg School of Public Health with a Bloomberg American Health Initiative Fellowship, and is a Fellow with the Kresge Foundation’s Emerging Leader in Public Health Initiative.



**Ellen Weinstein, JD**

*Deputy General Counsel, Boston Medical Center*

Ellen Weinstein is a healthcare lawyer with a wide-ranging practice at Boston Medical Center, where she serves as Deputy General Counsel. At BMC, a full-service academic medical center and the region’s largest safety net hospital, Weinstein provides regulatory, transactional, compliance/government enforcement, and governance counsel. She has a particular focus on patient quality, safety, and experience, including serving on the hospital’s Immigrant Health Task Force, Patient Safety Steering Committee, Ethics Committee, Accessibility Committee and Transgender Patient Taskforce. Weinstein also advises on the implementation of health care reform at the provider level, including the development of accountable care organizations. Before joining Boston Medical Center, she practiced in the health care group at Ropes & Gray. Weinstein has a BA from Yale College, a JD from Harvard Law School, and completed a fellowship in medical ethics at Harvard Medical School.