

## LabCentral

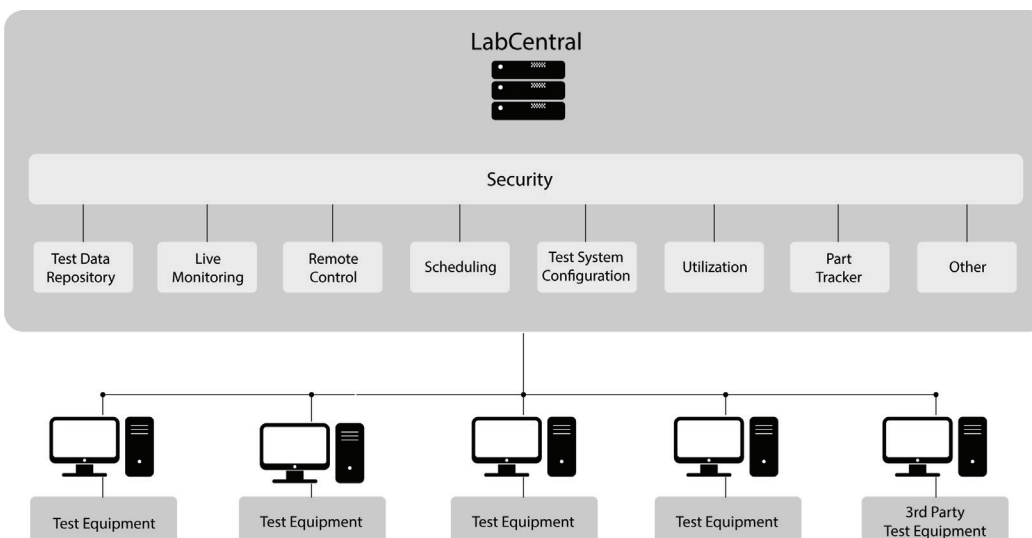
Centralized Server

Transform the normal chaos of a test facility into a controlled environment.

Modern labs perform a number of different functions simultaneously. This requires a variety of test systems from multiple vendors, each generating data for a specific purpose. With the ever-increasing need for higher channel counts and faster acquisition speeds, the amount of data produced across the entire lab can easily exceed multiple gigabytes per day. The time and effort required to manually configure all the different test systems, and navigate through the massive amounts of data can be overwhelming. The result is typically a significant reduction in productivity, which is in direct conflict with the constant pressure for increased efficiency and maximized results.

LabCentral is the core component of LabWorX, A&D's centralized lab management suite, supplying the lab manager with the ideal tools to address these problems. With LabCentral, the entire lab can be managed from one single location. Test systems from any vendor can be seamlessly integrated and monitored through configurable dashboards. Data from every test cell is stored in one central location, where Test and R&D engineers have quick and secure access through extensive search capabilities. LabCentral also tracks test cell utilization, automatically providing the lab manager with critical information necessary for constantly improving the lab's productivity.

LabCentral Architecture



## Benefits

- Data from all test cells stored in one central location for quick and secure access
- Increased efficiency through automated test system utilization tracking
- Compatible with test systems from any vendor

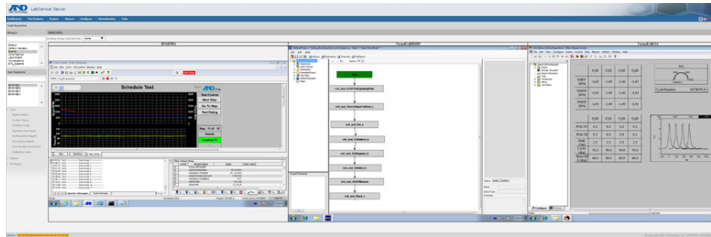
## Features

- Manages multiple gigabytes for test data and configurations from one single location
- Remote test cell monitoring via configurable dashboards
- Test article data is gathered automatically and travels with the unit from one test system to another around the lab



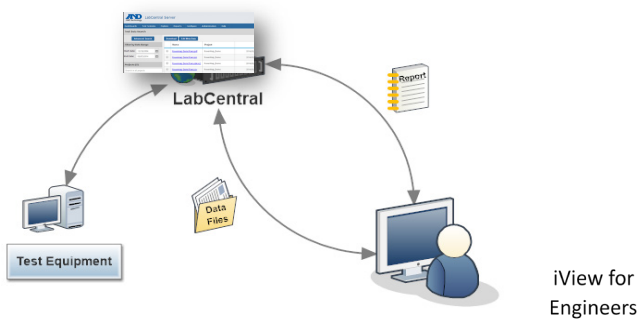
## LabCentral Components

### iView Level 2



iView Level 2 enables LabCentral to capture the screenshots of systems in the test cell that are only connected to the main iTest system – i.e. only on a local test cell network. The iView on the main iTest system will collect the screenshots of all of the iView Level 2 systems and forward them to LabCentral. This allows the server to build up a panorama view of all the systems in the test cell, just as if you walked into the control room.

### iView for Engineers



iView for Engineers is the component that enables automatic downloading of test data from LabCentral to your laptop without manually searching via the web pages. You simply subscribe to the projects on LabCentral that you are interested in and iView for Engineers will automatically synchronize the test data and reports to your laptop.

### LabWeatherServer



LabWeatherServer is the component responsible for monitoring ambient conditions in the lab. It uses network connected weather stations to monitor up to 16 different zones. Each zone can have its own expected conditions that can trigger notifications from LabMinder if required. The conditions are continuously logged and uploaded to LabCentral for permanent storage and analysis.

#### Americas

A&D Technology, Inc.  
Ann Arbor, MI USA  
Ph: +1 (734)973 1111  
www.AandDTech.com

#### Europe

A&D Europe, GmbH  
Griesheim, Germany  
PH: +49 (0)6155-605 250  
www.AandDEurope.com

A&D Europe - UK Branch  
Abingdon, Oxon, UK  
PH: +44 (0)1235-550 420  
www.AandDEurope.com

#### Asia

A&D Technology Trading Co.  
Shanghai, China  
PH: +86 (0)21-3393 2340  
www.AandDTech.com

A&D Company, Ltd-  
Tokyo, Japan  
PH: +81 (0)3-5391 2753  
www.AandD.co.jp

#### Australia

A&D Australasia Pty Ltd.  
Kensington, VIC, Australia  
PH: +61 (0)3-9372 1522  
www.andaustralasia.com.au