

MAJESTY YACHTS 110

Spanning The Gulf



Despite being one of the world's Top 10 super yacht producers, UAE-based Gulf Craft Inc. and their Majesty range is arguably one of the sector's best kept secrets.

During their 35-year history the Middle Eastern powerhouse has been synonymous with offering value for money; they still are, but as their new 110 demonstrates, they also produce yachts of a quality that more than hold their own in a highly competitive market segment.





Gulf Craft always has a surprise to reveal during the annual Dubai International Boat Show and this year's edition of the show was no exception. The brand new Majesty 110 was unveiled as the latest addition to its Majesty Yachts' Superyacht Collection. The company's wide product range exemplifies Gulf Craft's unique ability to offer designs tailored to meet the needs of every yacht and boat enthusiast, from a 27' cabin cruiser to a 155' superyacht. The Majesty 110 brings together 35-years of boat building experience and this yacht showcases their progress in combining advanced technology and engineering coupled with innovative design. Gulf Crafts' continuing investment in

To retain every possible aspect of a yacht's build in-house—from carpentry to brightwork, hull lay-up and design to upholstery and engineering—Majesty Yachts have invested heavily in their technical capabilities.

research and development, and in improving its manufacturing processes, really shines through with this latest and youngest tri-deck in the fleet. A lot of new features and benefits for the owner are packed into this 114' (33m) craft, including the impressive use of space in one of the smallest tri-deck yachts on the market, while maintaining tasteful exterior styling considering the high volume interior. A key feature throughout the superyacht is the liberal and impressive use of marble in almost all cabin areas, some of it inlaid with polished stainless steel and all complemented by the eucalyptus veneer trim and the flooring in white oak with a rough cut finish. The mood board proves to be a perfect combination. For the captain the



Majesty 110 is fitted with some of the latest navionics on the market, while guests will enjoy the powerful entertainment system from leading brand Bang and Olufsen.

As with all Majesty Yacht models, the Majesty 110 is a semi-custom superyacht with the owner having an impressive choice of layout, interior trim and furnishings, all down to Gulf Craft's continuing investment in technology which allows efficient and fast semi-custom work to be offered. Technology has played a pivotal role in propelling Gulf Craft into the world of innovative crafts. Over the last ten years, the factory has been fully engineered with Computer Aided Design (CAD) and Computer Aided Manufacturing (CAM) systems, these allow the company to rapidly develop new





designs for customers at the preliminary stage and complete accurate costings.

Once approved by the customer, the designs are transformed into digital format so that the CAM machines can accurately and efficiently cut the joinery, marble and stainless steel components for installation by a team of skilled craftsmen. Final finish is perfected using the latest spray booths and equipment, before the joinery reaches final as-

The main salon features a large seating area aft, a 75" BeoVision Avant TV and a fold-down balcony to starboard.

sembly. The strategy at Gulf Craft is to manufacture in-house as many of the components for its yachts and boats as it can, maintaining control on delivery times and quality. They weld and form their own brightwork, lay their own hulls and superstructure, fit the major systems themselves and fabricate the interiors.

Gulf Craft's total work force currently numbers in





Length overall: 114' 3" (34.80m)
Length water line: 91' 2" (27.80 m)
Max Beam: 23' 3" (7.10m)
Draft: 5' 6" (1.70m)

Displacement: 98 t approx
Fuel capacity: 4,610 US gal (17,460 L)
Water capacity: 1,000 US gal (3,800 L)
Black water capacity: 217 US gal (820 L)
Grey water capacity: 217 US gal (820 L)

Generators: 2x Kohler, 51kW, 50Hz
Engines: 2x 1,900 hp (1,397 kW)
Vessel type: FRP luxury motor yacht
Builder: Majesty Yachts (UAE)

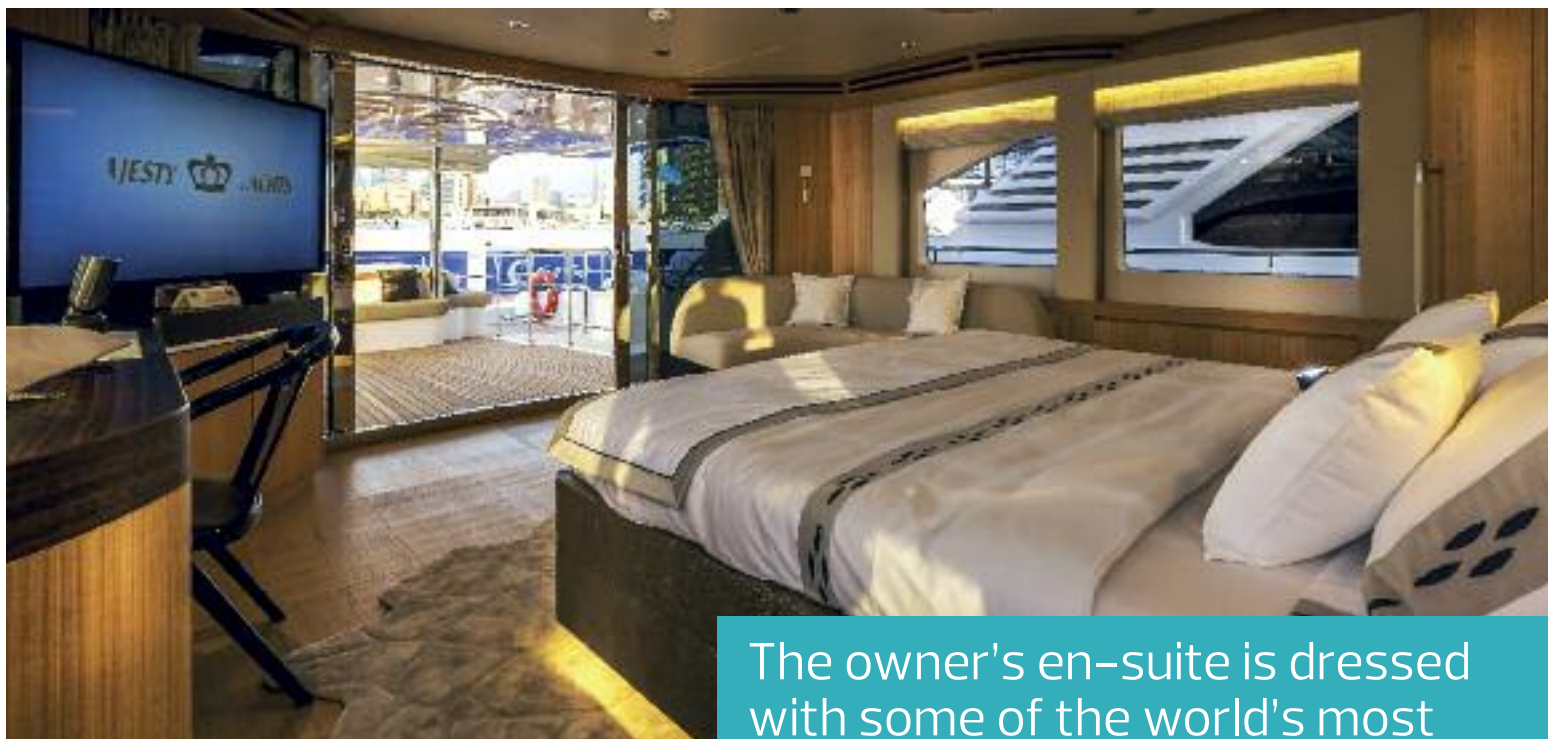
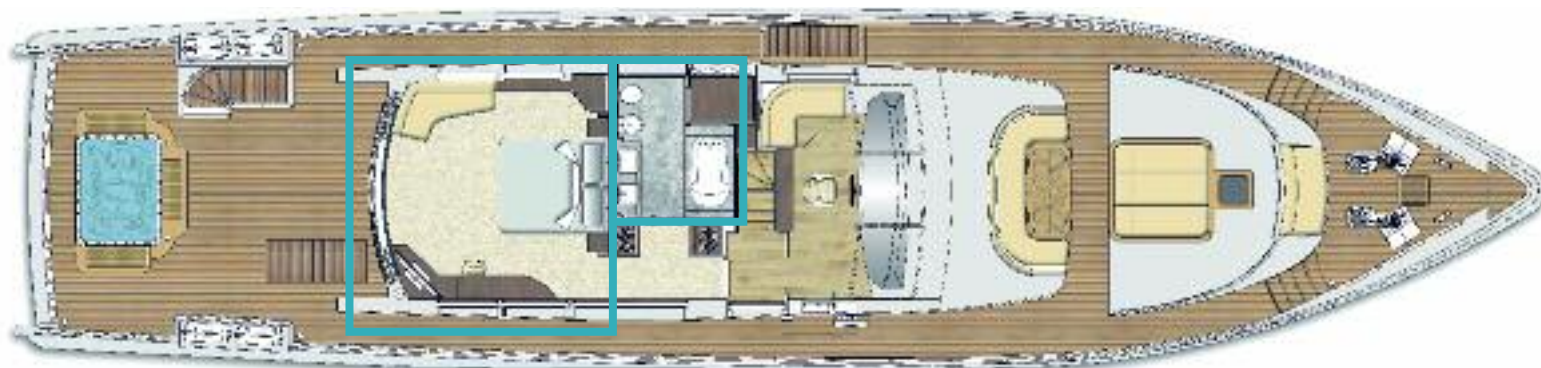


excess of 1,500, employed across its four facilities—three in the United Arab Emirates and one in the Maldives. More than 50 engineers are involved in operating the CAD and CAM systems, though despite the investment in technology, craft skills are still vital for the final assembly stages. To this end Gulf Craft places a heavy emphasis on retaining its staff and runs an extensive training and ongoing development scheme for its work force.

Boarding the Majesty 110 at the aft transformer platform, the spacious garage is the first key feature to be noticed. Complete with the now almost mandatory SeaDoo R60rs and 385 Williams rigid inflatable tender, these toys can be easily launched by the help of the crane system by the yacht's crew. In terms of navigational practicality and safety, there is an emergency steering position aft of the garage and a supplementary docking station in the aft section.

Moving forward to the main deck, one is immediately impressed by the spacious shaded cockpit with a teak dining table for ten guests and a sun-





The owner's en-suite is dressed with some of the world's most prestigious marble, Azul Bahia, and also includes a Jacuzzi tub...

Replacing the traditional sky lounge with the owner's suite creates the sense of a luxurious apartment, complete with private terrace aft.

bathing area that extends out over the transom from the aft seating area. Entering the main saloon, the deep panoramic windows provide outstanding views, whilst allowing ample sunlight to cascade into the interior. There is a seating area aft with large 75" BeoVision Avant TV and a sliding door on the starboard side that leads to the fold down balcony area that protrudes over the sea, allowing the guest to enjoy evening breezes. Another feature on this Majesty 110 is the dining area that can seat the full compliment of fourteen guests. Located just forward of the main saloon, the dining area has plenty of sea-fastening cup-

boards to store the flatware, cutlery and crystal. At the starboard side of the dining area is a corridor with access to the owner's stateroom, the wheelhouse on the upper deck and four guest state-rooms on the lower deck, while the gym and forward VIP guest stateroom are on the main deck. On the first Majesty 110, the forward stateroom is the VIP guest stateroom. Featuring deep panoramic windows and a state-of-the-art Bang and Olufsen entertainment system, the full beam space has a queen size bed so the guest can relinquish in its tranquillity and an en-suite fully finished in elegant marble.

Moving up to the owner's stateroom on the bridge deck, this area showcases a sumptuous olive wood interior and is situated aft, right above the saloon area, where it commands impressive views through the now de rigueur panoramic windows. The owner's en-suite is dressed with some of the world's most prestigious marble, Azul Bahia, and also includes a Jacuzzi in which to soak away stresses and reinvigorate oneself. Being semi-custom, the general arrangement of the yacht is of course flexible to the owner's desire, so this area has the option to instead be configured as a sky lounge, with the VIP guest stateroom on the main



deck then becoming the owner's stateroom. The owner is pampered with plenty of features, including a surround sound system enriches the owner's yachting experience both inside and out; for the aft deck acts as a private terrace. This private sun deck has plenty of lounging space and is also fitted with another Rotorua Jacuzzi, deck shower and retractable, electrically operated, sun canopy. Slipping outside and walking down the gunnels on the upper deck to the bow area, where the hy-

draulic windlasses for the twin 213lb (97kg) anchors can be found, ne also discovers a delightful forward facing Alfresco dining table for five persons, plus a sunbed area that is ideal for taking advantage of the sea breezes that flow over the area when at anchor. This area is overlooked by the wheelhouse, which has access to the side deck, and provides a commanding view for the captain. The wheelhouse includes a full fit-out of the latest Garmin navigational aids, including three 17" multi

touch display monitors at the main helm with two 15" repeaters on the fly-bridge station. Additional aids to navigation and communication include Garmin autopilots, radars, VHF radios, night vision camera and several cameras monitoring system on the superyacht. The aft end of the pilot house has a bench seat for guests wishing to observe the operation of the vessel as it cruises to its destination. Personally however, we'd head to the fly-bridge, which is accessed by floating stairs from the



The on-deck VIP with adjacent gym could act as a second owner's suite, making the 110 a great prospect for charter.



Pullman berths in the twin guest cabins add to the yacht's flexibility in terms of accommodating up to twelve guests.

owner's sun deck area, and sports a full size dining table completely shaded by a fiberglass hardtop. The bar counter area, served by four stools, is fully equipped with a grill, ice maker and fridge.

In terms of guest accommodation, the two double and two twin guest staterooms are situated on the lower deck and are connected by a lobby area. All staterooms have their own private en suites and shower facilities, again fitted with lavish marble throughout. The two twin guest staterooms can have an extra Pullman berth in case the owner requires additional berths. This takes the superyacht's accommodation to six staterooms with a very flexible manner in which to accommodate its guests.

An important area for any yacht is the galley and crew area, and once again the Majesty 110 excels

with a large galley accessible via a fireproof door from the saloon area and crew quarters. Fully fitted out with Miele appliances, the galley includes a dishwasher, refrigerator, microwave, induction hob and oven. The crew accommodation is on the forward lower deck accessed from the galley area by a stairwell, the two crew cabins are fitted with two single bunks and two head compartments with showers. There's also a separate laundry room with a washer and a dryer. The captain has a cabin aft of the lower deck, situated near the engine room and alongside the crew lounge space. The engines, twin MAN 1,900hp, can give the yacht a top speed of 20-knots. Also installed in the engine room are the twin gensets, powerful air conditioning system and water makers.

While the quality of a superyacht such as the

Majesty 110 is immediately apparent in terms of the finish, quality and design, what is more difficult to discern is the quality of the hull, superstructure and engineering. It is in this more technical disciplines that Gulf Craft has noticeably achieved over the years. This is best answered by a visit to the state-of-the-art Umm Al Quwain shipyard where we noted attention to detail, such as the vacuum bagging manufacture of the fiberglass hulls, the closed cell foam used for the frames and the balsa sandwich superstructure construction. In addition, the structural bulkheads are made with a core cell foam sandwich for strength and lightness. Manufacturing the structure of a yacht in this hi-tech way produces a light strong and stiff vessel and saves several tons in weight which increases performance and fuel economy.





Gulf Craft has made a momentous journey from humble beginnings as a small boat builder to an international superyacht brand. Today it ranks amongst the world's Top 10 superyacht producers and holds plenty of accolades awarded in Europe, Middle East and Asia. Although the Majesty Yachts range now conveys high-end luxury and great value, this has not obscured the attention to detail needed to produce a yacht that can be easily handled by the crew. This yacht clearly lives up to its

Bearing a price tag of just \$9.5-million, with the Majesty 110 you get a great deal of yacht for your money!

credentials and the RINA MC Build standard. After viewing the Majesty 110, one is left with three lasting impressions. Firstly, the amount of volume and space on this tri-deck yacht whilst still boasting sleek and stylish design. Secondly, the incredible marble work and the style and standard of the interior fit out. And last, but not least, the incredible value that this superyacht offers, at a list price of \$9.5-million USD it's certainly one worth considering!

