



Tourism Asset Inventory

Willow County, Missouri

Prepared by

Destinovate LLC

Table of Contents

About Willow County	4
Key Demographics and Facts	5
Transportation and Infrastructure	6
Destination Marketing Organization Profile	7
Tourism Tax Revenue Opportunities	8
SWOT Analysis	9
Visitor Personas	10
Seasonality Profile	11
About Willowdale	12
List of Tourism Assets in Willowdale	13
Summary of Tourism Assets in Willowdale	14
Willowdale SWOT Analysis	15
Willowdale Visitor Personas	16
Shops in Willowdale	17
Willowdale Shops Economic Impact	18
Willowdale Shops and the Tourism Ecosystem	19
Willowdale Shops and Social Media	20
Restaurants in Willowdale	21
Willowdale Restaurants Economic Impact	22
Willowdale Restaurants and the Tourism Ecosystem	23
Willowdale Restaurants and Social Media	24
Lodging in Willowdale	25
Willowdale Lodging Economic Impact	26
Willowdale Lodging and the Tourism Ecosystem	27
Willowdale Lodging and Social Media	28
Willowdale Museums & Attractions	29
Willowdale Museums & Attractions Economic Impact	30
Willowdale Museums & Attractions and the Tourism Ecosystem	31
Willowdale Museums & Attractions and Social Media	32
Willowdale Outdoor Activities	33
Willowdale Outdoor Activities Economic Impact	34
Willowdale Outdoor Activities and the Tourism Ecosystem	35
Willowdale Outdoor Activities and Social Media	36
Closing Remarks on Willowdale	37
About Hillcrest	38
List of Tourism Assets in Hillcrest	39
Summary of Tourism Assets in Hillcrest	40

Hillcrest SWOT Analysis	41
Hillcrest Visitor Personas	42
Hillcrest Economic Impact	43
Hillcrest Tourism Ecosystem	44
Hillcrest Tourism Assets and Social Media	45
Hillcrest Closing Remarks	46
About Woodside	47
List of Tourism Assets in Woodside	48
Summary of Tourism Assets in Woodside	49
Woodside SWOT Analysis	50
Woodside Visitor Personas	51
Woodside Economic Impact	52
Woodside Tourism Ecosystem	53
Woodside Tourism Assets and Social Media	54
Woodside Closing Remarks	55
Next Steps for Willow County	56

About Willow County

Willow County is located in the fictional River Hills Valley of central Missouri and is known for its scenic beauty, cultural heritage, and outdoor recreation opportunities. One of the main attractions in Willow County is Willow Creek, a tributary of the Silver Springs River, which offers excellent opportunities for boating, fishing, and kayaking. In addition to Willow Creek, the county is home to several parks and recreational areas, including hiking trails, picnic areas, and campsites. The area's natural beauty and recreational activities make it an ideal destination for outdoor enthusiasts. Willow County is home to the City of Willowdale, the largest city and county seat. Smaller towns in Willow County include the Town of Hillcrest and the Town of Woodside.

Willow County has a rich and varied history that dates back to the early 1800s. The region was originally inhabited by Indigenous peoples, including the Dakota and Ojibwe tribes, who relied on the fertile soil and ample water sources of the area to sustain their way of life. European settlers began to arrive in the area in the mid-1800s, and the county was officially established in 1858. Throughout the years, Willow County has been shaped by a number of industries, including logging, agriculture, and tourism. Today, the county continues to thrive as a hub of activity and a popular destination for visitors who are drawn to its natural beauty and rich cultural heritage.

A major draw for visitors to Willow County is the area's rich history and cultural heritage. The county is home to several historic sites and landmarks, including the Woodside Lumber Mill, which was founded in the early 1800s and still stands as a testament to the area's logging industry. The region's many small towns are also steeped in history, with charming main streets lined with boutique shops and artisan studios. Visitors can immerse themselves in the county's cultural heritage by visiting local museums and historical societies, attending cultural festivals, and exploring the area's many art galleries.

In recent years, Willow County has made a concerted effort to develop its tourism industry, recognizing the potential economic benefits that can come with attracting visitors to the region. The county has invested in marketing and infrastructure to promote its natural beauty, historic sites, and cultural assets. This includes the development of hiking trails, the restoration of historic buildings, and the creation of cultural events and festivals. These efforts have paid off, as the tourism industry in Willow County continues to grow and contribute to the local economy.

Finally, Willow County is renowned for its culinary scene, with many local restaurants featuring fresh, locally-sourced ingredients. The county's small towns are home to several bakeries, coffee shops, and cozy restaurants that offer a taste of the area's culinary traditions. Visitors can also take advantage of the area's many agritourism activities, such as visiting local farms and orchards, attending farmers markets, and learning about the county's sustainable agriculture practices. Overall, the combination of outdoor recreation opportunities, cultural heritage, and culinary delights make Willow County a must-visit destination for travelers looking for an authentic and unique experience.



Rivers, forests and charming communities - Willow County has it all!

Key Demographics and Facts

Willow County:

Total population: 63,407

Median age: 42

Median household income: \$60,834

Racial makeup: 82% White, 8% Hispanic, 6% Black, 2% Asian, 2% other

Education: 33% of the population holds a bachelor's degree or higher

Industries: Agriculture is the largest industry in the county, followed by tourism and manufacturing.

City of Willowdale:

Total population: 45,202

Median age: 41

Median household income: \$65,215

Racial makeup: 85% White, 7% Hispanic, 5% Black, 2% Asian, 1% other

Education: 37% of the population holds a bachelor's degree or higher

Industries: Agriculture is still a significant industry in Willowdale, but the town has also become known for its eco-tourism industry and artisan shops.

Town of Hillcrest:

Total population: 6,978

Median age: 45

Median household income: \$54,297

Racial makeup: 89% White, 7% Hispanic, 3% Black, 1% other

Education: 28% of the population holds a bachelor's degree or higher

Industries: Agriculture is still an important industry in Hillcrest, but the town is also known for its small businesses, including a popular bakery and coffee shop.

Town of Woodside:

Total population: 5,227

Median age: 47

Median household income: \$57,482

Racial makeup: 83% White, 10% Hispanic, 5% Black, 1% other

Education: 25% of the population holds a bachelor's degree or higher

Industries: The historic lumber mill is still an important part of the town's identity, but the town has also become a popular tourist destination for those interested in history and outdoor activities.



Discover history, the outdoors, local art and farm-to-fork cuisine in Willow County

Transportation and Infrastructure

Willow County has a modern and well-maintained infrastructure with improved highways, schools, and emergency services. The county has several major highways running through it, including Interstate 44 and US Route 63, making it easily accessible from neighboring cities and states. This improved infrastructure has played a significant role in promoting economic growth and tourism in the area.

The schools in Willow County are highly regarded for their excellence in education. They are equipped with the latest technology and offer a wide range of programs to cater to the diverse needs of students. The county also has several colleges and universities, including a branch of the University of Missouri, providing opportunities for higher education.

Willow County has a well-developed emergency services system, including several hospitals and emergency response teams. The county has a highly trained and experienced workforce in the healthcare and emergency services sectors, ensuring residents and tourists receive top-notch medical care and assistance in case of emergencies.

The county is situated in a strategic location, making it an ideal destination for tourists and residents alike. It is located at a convenient distance from larger cities like St. Louis, Springfield, and Kansas City, providing easy access to all the amenities and facilities of urban areas. The county is also situated near several airports, including the Lambert-St. Louis International Airport, making it easy for tourists to travel to and from the area.

The improved infrastructure and geographic location of Willow County have helped it become a major tourism destination in the region. With its picturesque natural beauty and charming small towns, the county offers a unique and unforgettable experience for tourists. From exploring the trails in Hillcrest to visiting the historic sites in Willowdale, there is something for everyone in Willow County.

The improved infrastructure has also contributed to the growth of local businesses, creating new job opportunities and attracting new investors to the area. As a result, the economy of the county has flourished, providing a higher standard of living for its residents.

Overall, Willow County is a thriving community with modern infrastructure, excellent schools, and robust emergency services. Its geographic location and proximity to major cities and airports make it a convenient and accessible destination for tourists and residents alike. The county's natural beauty and tourism assets, combined with its welcoming and friendly community, make it a unique and attractive place to visit or call home.



Scenic drive in Willow County

Destination Marketing Organization Profile

Willow County's tourism industry is supported by several organizations that promote the area's attractions and serve as resources for visitors. These organizations include the Willow County Chamber of Commerce, the Hillcrest Heritage Association, the Woodside Historical Society, and the River Hills Valley Convention and Visitors Bureau (CVB). While these organizations provide valuable resources for tourists, their branding and messaging can be inconsistent, leading to a lack of clear brand image.

The Willow County Chamber of Commerce, located in Willowdale, serves as a hub for local businesses and the tourism industry. The chamber promotes the county's attractions and events, but their messaging tends to be more business-focused than tourism-focused. The chamber's website provides some tourism information, but it is not the primary focus of the site.

The Hillcrest Heritage Association, based in Hillcrest, focuses on preserving the area's cultural heritage and historic sites. While they offer tours and educational programs for tourists, their messaging is geared towards locals interested in history and preservation.

The Woodside Historical Society, located in Woodside, is dedicated to preserving and promoting the area's rich history. They offer tours, events, and educational programs, but their messaging is primarily geared towards locals and history buffs.

The River Hills Valley Convention and Visitors Bureau is responsible for promoting tourism in Willow County and the surrounding counties. While they provide a wealth of information on their website and in their visitor centers, the messaging can be inconsistent across the different counties they cover.

While the involvement of multiple organizations can be beneficial for the tourism industry, the mixed messaging can create confusion for visitors. Without a clear brand image and messaging, tourists may not fully understand the attractions and experiences available in Willow County.

By creating a clear and compelling brand image for Willow County, tourists will be able to better understand the area's attractions and experiences. This will help to drive tourism to the area and support the local economy. The improved branding and messaging can also help to foster a sense of community pride and encourage locals to explore and appreciate the unique offerings of their home county.



Historic Main Street in Woodside

Tourism Tax Revenue Opportunities

In Missouri, there are a few statutes that allow local governments to impose various taxes on businesses in the tourism industry. One such tax is the Accommodations Tax, which is a tax on lodging facilities such as hotels, motels, and bed and breakfasts. This tax is intended to provide revenue to the local government to promote tourism and other related activities.

Another tax that Missouri cities and counties can impose is the Hospitality Tax, which is a tax on restaurants, bars, and other dining establishments. This tax is used to fund tourism promotion and related activities, such as convention centers and marketing campaigns.

In addition to the Accommodations Tax and Hospitality Tax, Missouri cities and counties can also impose an Admissions Tax. This tax is collected from events and attractions that charge admission, such as museums, parks, and festivals. The Admissions Tax is intended to help fund local tourism promotion and development.

Finally, Missouri cities and counties can also impose a Sales Tax on businesses that sell goods and services to tourists. This tax is used to fund a variety of local government services, including police and fire departments, public schools, and other public works.

All of these taxes are intended to help fund local tourism promotion and development efforts, and to encourage more visitors to come to the area. By collecting these taxes, local governments can generate revenue to invest in infrastructure improvements, marketing campaigns, and other programs that can help make their area a more attractive destination for visitors.

Of course, businesses in the tourism industry may not always be happy about these taxes, as they can add to the cost of doing business. However, the benefits of increased tourism and visitor spending can outweigh the costs of these taxes, making them a necessary tool for local governments to promote economic growth and development.

Please note that the tax situations referenced throughout this sample report are intended to illustrate what might be available in various locations and do not reflect the exact scenario for any given place.



Waterfall along Willow Creek

SWOT Analysis

Willow County has several strengths that make it an attractive destination for visitors. One of its main strengths is its natural beauty, with rolling hills, forests, and scenic rivers providing a picturesque setting for outdoor recreation. The county's location within Missouri also provides easy access to other popular destinations in the state, making it an ideal place for those looking to explore the region. Additionally, the county's rich history and cultural heritage make it a unique destination, with several museums, historic sites, and events that showcase the area's past.

However, there are also weaknesses that the county needs to address. One of the main challenges is the lack of cohesive branding, with different organizations promoting different aspects of the county, which can lead to confusion for visitors. The county also lacks a central visitor center, making it difficult for visitors to access information about the area's attractions and activities. Additionally, while the county has made some improvements to its tourism infrastructure, there is still room for further development, particularly in terms of accommodations and transportation.

There are several opportunities that Willow County can capitalize on to further develop its tourism industry. One of the main opportunities is the growing trend of eco-tourism, which emphasizes sustainable travel and outdoor recreation. The county's natural beauty and conservation efforts make it an ideal destination for those interested in eco-tourism. Additionally, the county can benefit from expanding its event offerings, such as festivals, fairs, and other cultural events that highlight the area's unique heritage and traditions. Finally, the county can leverage its location and proximity to other major destinations in Missouri to attract visitors who are looking for a central location for their travels.

Despite the opportunities, there are also several threats that Willow County needs to consider. One of the main threats is the growing competition from other destinations in Missouri and neighboring states. As more destinations look to develop their tourism industry, it becomes increasingly difficult for Willow County to stand out and attract visitors. Additionally, the county's lack of accommodations and transportation infrastructure may limit its appeal to visitors who are looking for more convenience and comfort during their travels. Finally, the ongoing COVID-19 pandemic presents a significant threat to the tourism industry, with restrictions on travel and gatherings impacting visitor numbers and revenue.

To address these challenges, Willow County needs to take a strategic approach to tourism development. This includes investing in tourism infrastructure, such as accommodations, transportation, and visitor centers, to improve the visitor experience. Additionally, the county needs to establish a cohesive branding strategy that highlights the area's unique heritage, natural beauty, and cultural offerings. This will help to differentiate the county from other destinations and attract visitors who are looking for an authentic and memorable travel experience. Finally, the county needs to collaborate with local organizations and businesses to create a comprehensive tourism plan that addresses the needs of visitors and residents alike. By doing so, Willow County can maximize its potential as a premier destination in Missouri and beyond.



Historic Downtown Hillcrest

Visitor Personas

The visitor personas of Willow County include a diverse range of tourists that may come to Willow County. These personas include history buffs, outdoor enthusiasts, families, foodies, event-goers and weekend getaway travelers..

Nature Lover, who is interested in exploring the natural beauty of the area. This person enjoys hiking, bird-watching, fishing, and camping. They are interested in activities that allow them to connect with nature and appreciate the environment. They also look for accommodations that are close to the natural attractions and offer opportunities for outdoor activities.

History Buff, who is interested in exploring the rich history and culture of the area. This person enjoys visiting historical sites, museums, and other cultural attractions. They are interested in learning about the history of the region, including the settlements, wars, and other significant events. They also look for accommodations that are close to historical sites and offer guided tours and other activities related to history.

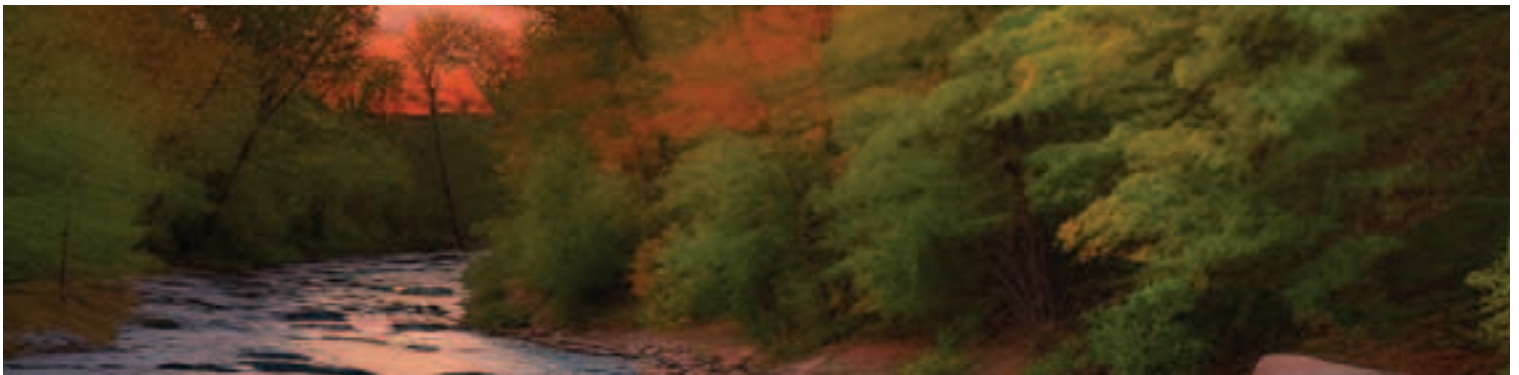
Foodie, who is interested in exploring the local cuisine and trying out different restaurants and cafes in the area. This person enjoys sampling local food and drinks, including wine, beer, and other specialty items. They are interested in local cooking techniques and regional cuisine. They also look for accommodations that offer food-related activities, such as cooking classes or wine tasting events.

Adventure Explorer, who is interested in extreme sports and activities. This person enjoys activities such as kayaking, zip-lining, and rock climbing. They are interested in experiencing adrenaline-inducing activities and pushing their limits. They also look for accommodations that offer activities such as mountain biking, ATV tours, and other adventure sports.

Family Vacationer, who is interested in family-friendly activities and accommodations. This person is traveling with children and is looking for activities that the whole family can enjoy. They are interested in accommodations that offer activities for children, such as swimming pools, playgrounds, and game rooms. They also look for activities such as hiking, fishing, and other outdoor adventures that can be enjoyed by the whole family.

Romantic Escaper, who is interested in a romantic getaway with a partner. This person is looking for accommodations that offer a romantic atmosphere, such as cozy cabins, hot tubs, and fireplaces. They are interested in activities such as couples' massages, wine tastings, and fine dining. They also look for activities such as scenic drives, horseback riding, and other romantic activities that can be enjoyed as a couple.

Relaxation Seeker, who is looking for a break from the hustle and bustle of city life or simply looking for a place to unwind and recharge. This type of traveler is attracted to natural settings such as parks, gardens, and scenic drives, where they can enjoy some quiet time and escape from the stresses of daily life. The relaxation seeker is also likely to enjoy activities such as yoga, meditation, and spa treatments, which promote calm and relaxation.



Sunset on Willow Creek

Seasonality Profile

A successful tourism strategy for Willow County must take into account the unique characteristics and interests of its target audience, as well as the changing needs of visitors in each season. The Rustic Rhythms brand can be used to attract travelers seeking an authentic and immersive experience, and partnerships between local businesses and attractions can create integrated experiences for visitors. In order to succeed, businesses and attractions must offer high-quality and authentic experiences that align with the brand, while tailoring marketing efforts to target audiences in each season. Positive word-of-mouth and repeat business can be built by offering an exceptional visitor experience.

In the spring, visitors may be drawn to the area for outdoor activities such as hiking, fishing, and bird watching. The area's natural beauty, including its parks and forests, can be marketed as a prime destination for those seeking to reconnect with nature. Additionally, local farms and orchards can offer springtime activities such as berry picking and farm tours, which can appeal to families with young children. By positioning itself as a prime destination for outdoor recreation and farm-to-table experiences, Willow County can attract visitors seeking an authentic and immersive travel experience in the spring.

Summer is a peak season for travel, and Willow County can leverage its natural beauty and outdoor recreation opportunities to attract visitors during this time. Activities such as kayaking, tubing, and camping can be marketed to adventurous travelers, while more relaxed options such as picnics and outdoor concerts can appeal to families and couples. Local restaurants and breweries can also capitalize on the influx of visitors by offering seasonal menus and hosting events that showcase the area's food and drink offerings. By promoting Willow County as a summer destination for outdoor adventure, relaxation, and culinary experiences, the Rustic Rhythms brand can capture the attention of a wide range of potential visitors.

In the fall, the changing foliage draws visitors to the area in search of picturesque views and outdoor activities. The Rustic Rhythms brand can capitalize on this by partnering with local parks and scenic areas to promote the area's natural beauty. Additionally, fall festivals and events such as harvest festivals, apple picking, and wine tastings can be marketed to those seeking a festive and fun-filled autumn getaway. By positioning itself as a prime destination for fall foliage and seasonal events, Willow County can attract visitors who are looking for a quintessential New England experience.

Winter in Willow County can be a quieter time, but the area still offers opportunities for tourism. Outdoor winter activities such as skiing, snowshoeing, and ice fishing can be marketed to adventurous travelers, while cozy indoor experiences such as visiting local art galleries, museums, and cafes can be promoted to those seeking a more relaxed winter vacation. Local holiday markets and events can also draw visitors to the area during the holiday season. By marketing itself as a winter wonderland with a range of indoor and outdoor activities, Willow County can attract visitors looking for a unique and memorable winter vacation.



Snow-Capped Hills of Willow County

About Willowdale

The City of Willowdale in Willow County has a long and storied history that dates back to the early 19th century. The area was originally settled by a group of pioneers who were drawn to the fertile land along Willow Creek, a tributary of the Silver Springs River. The town was named after the abundance of willow trees that lined the banks of the creek, and it quickly became a hub for agriculture and trade.

Willowdale is a small city located in Willow County, in the River Hills Valley region. The town has a long history of being a farming community, with the fertile soil along Willow Creek providing the perfect conditions for growing a variety of crops. In more recent years, Willowdale has become known for its eco-tourism industry, with many visitors coming to the area to explore the natural beauty of Willow Creek and the surrounding region. The town is home to the River Hills Valley Zoo, which is a popular tourist attraction for families. Willowdale is also home to a number of artisan shops and studios, as well as a number of local restaurants that feature fresh, locally-grown ingredients.

The River Hills Valley Zoo was founded in the early 20th century by a group of local animal enthusiasts who wanted to create a space where people could learn about and appreciate the diverse wildlife in the area. The founders of the zoo worked with the local government to secure a large plot of land near Willowdale that was suitable for the construction of animal habitats. They also worked with architects and engineers to design and build the zoo in a way that was both functional and aesthetically pleasing. The zoo officially opened to the public in the summer of 1920 and has been a popular attraction in Willowdale ever since.

The Willow Creek is a beautiful waterway that runs through the town of Willowdale in Willow County. It is a popular spot for eco-tourism, with many visitors coming to enjoy the natural beauty of the area and participate in outdoor activities such as fishing, hiking, and camping. The Willow Creek is also home to a diverse range of plant and animal life, making it a popular destination for nature lovers. In recent years, the town of Willowdale has worked to promote eco-tourism in the area by developing facilities and amenities for visitors, including campgrounds, trails, and nature centers. Many people come to Willow Creek to experience the peacefulness and serenity of the natural surroundings, and to escape the hustle and bustle of city life.



Locally owned shops and restaurants line Main Street Willowdale

List of Tourism Assets in Willowdale

Shops:

Willowdale Artisan Market
The Rustic Willow gift shop
The Country Store
Willowdale Antiques Emporium
The Greenhouse Nursery

Restaurants:

Willow Creek Café
The Farmer's Table
The Willowdale Grill & Tavern
The Bakery at Willow Creek
The Red Barn Diner

Hotels/Lodging:

Willowdale Inn
Silver Springs Lodge & Spa
The Farmhouse Bed & Breakfast
Willow Creek Cabins
The Creekside Inn

Museums/Attractions:

River Hills Valley Zoo
Willowdale Historical Society Museum
Willow Creek Nature Center
The Artisan's Studio
Willowdale Cultural Center

Outdoor Activities:

Willow Creek Canoe & Kayak Rentals
Willow Creek Hiking Trails
Willowdale Fishing & Hunting Club
Willow Creek Golf Course
Willowdale Equestrian Center
Willowdale Motorsports Park



Experience the thrills of nature at the Willowdale Motorsports Park

Summary of Tourism Assets in Willowdale

Willowdale is known for its natural beauty and eco-tourism industry. The city is situated along Willow Creek, a tributary of the Silver Springs River, which provides the perfect conditions for growing a variety of crops. The fertile soil has made Willowdale a farming community for generations, and today it is home to a number of artisan shops and studios, as well as local restaurants that feature fresh, locally-grown ingredients. Visitors can experience the area's farm-to-table culture and shop for handmade crafts.

In addition to its farm-based businesses, Willowdale is home to the River Hills Valley Zoo, which is a popular attraction for families. The zoo features a wide range of animals, from exotic species to local wildlife. Visitors can take part in guided tours or enjoy a leisurely stroll around the zoo's beautifully landscaped grounds. The zoo also offers educational programs for children and adults, making it a great place for a family outing or school field trip.

For those seeking outdoor adventure, Willow Creek provides ample opportunities for kayaking, fishing, and hiking. The surrounding area features many parks and recreational areas, including the Willowdale State Park, which is home to several hiking trails, picnic areas, and a small lake for fishing and swimming. Visitors can also explore the area's natural wonders, such as the breathtaking Silver Falls, which is located just a short drive from town.

For history enthusiasts, Willowdale offers a glimpse into the region's past. The city's historic district features well-preserved buildings from the 19th and early 20th centuries, including the Thompson Mansion, which has been converted into a museum showcasing the city's history. Visitors can learn about the city's founding, its early industries, and the impact of the surrounding region's natural resources on the city's growth and development.

Finally, Willowdale offers a variety of lodging options for visitors, including cozy bed and breakfasts, inns, and cabins. These accommodations offer a comfortable and convenient base for exploring the town and the surrounding region. With its natural beauty, rich history, and unique cultural offerings, Willowdale is a must-visit destination for travelers seeking a relaxing and authentic small-town experience.



The Farmer's Table Restaurant on Main Street in Willowdale

Willowdale SWOT Analysis

The tourism assets in Willowdale offer a diverse range of attractions for visitors, including dining options, lodging properties, outdoor activities, museums, and cultural events. The strength lies in the natural beauty of the region, and the variety of experiences offered to visitors. However, weaknesses include a lack of public transportation, limited off-season activities, and the need for more extensive marketing efforts.

Opportunities for growth include further developing ecotourism offerings, expanding the use of social media, and developing more infrastructure for visitors. Threats to the tourism industry in Willowdale include competition from nearby destinations, the potential for natural disasters, and shifts in consumer demand. Overall, by leveraging its strengths and addressing its weaknesses, Willowdale can continue to build a thriving tourism industry and attract visitors from around the world.

Strengths:

One of the strengths of the local tourism assets in Willowdale is the variety of experiences it offers visitors. With outdoor activities such as hiking, canoeing, and golfing, and indoor experiences such as museums, restaurants, and lodging, Willowdale can appeal to a wide range of visitors. The town's focus on locally sourced ingredients and artisanal products can also be a unique selling point.

Another strength is the town's commitment to sustainability and environmental conservation, which can attract visitors who are interested in eco-friendly tourism. The presence of the Willow Creek Nature Center and the town's commitment to clean water and air can be an asset in marketing the destination to these visitors.

Weaknesses:

One of the weaknesses of Willowdale's tourism assets is the town's relatively small size and lack of name recognition compared to other destinations. This can make it difficult to attract visitors who are not familiar with the area. The town may also struggle to compete with larger and better-known destinations in terms of marketing budgets and resources.

Opportunities:

One opportunity for Willowdale is to partner with nearby destinations to create regional tourism packages that can appeal to a wider range of visitors. Collaborating with other towns or cities in the area can help to pool marketing resources and create a more comprehensive tourism product.

Another opportunity is to leverage the town's commitment to sustainability and environmental conservation as a unique selling point. This can attract visitors who are interested in eco-friendly tourism and help the town stand out from other destinations.

Threats:

One of the threats to Willowdale's tourism assets is the impact of unpredictable weather patterns on outdoor activities. Visitors may be deterred by weather conditions that make hiking, golfing, or other outdoor activities difficult or impossible.

Another threat is the potential impact of economic downturns or other external factors that can impact the tourism industry as a whole. This can make it more difficult for Willowdale to attract visitors and may lead to declines in tourism revenue.

Willowdale Visitor Personas

Nature lovers: Visitors who enjoy exploring the outdoors and appreciating natural beauty might be drawn to the eco-tourism industry in the area, as well as the River Hills Valley Zoo. They might also be interested in purchasing outdoor gear and supplies at the local outfitter.

Foodies: Visitors who are passionate about fresh, locally-sourced ingredients and unique dining experiences might be interested in the local restaurants, bakeries, and cafes in Willowdale. They might also be interested in attending a cooking class or workshop at one of the local artisan shops.

Art enthusiasts: Visitors who appreciate artisan crafts and handmade goods might be interested in exploring the local artisan shops and studios in Willowdale. They might be interested in purchasing unique souvenirs or gifts, or attending a workshop or demonstration.

History buffs: Visitors who are interested in the history of the area might be interested in visiting the local museums, or learning more about the town's agricultural past. They might also be interested in staying in a historic hotel or bed and breakfast.



Local scenery surrounding Willowdale

Shops in Willowdale

The local shops in Willowdale, including the Willowdale Artisan Market, The Rustic Willow gift shop, The Country Store, Willowdale Antiques Emporium, and The Greenhouse Nursery, contribute significantly to the tourism product and visitor experience in Willow County. These shops offer a unique shopping experience for visitors, with locally made products and antiques that cannot be found elsewhere.

The Willowdale Artisan Market provides a showcase for the talents of local artists and artisans, with a range of handmade goods including pottery, jewelry, and textiles. The market is a great place for visitors to find one-of-a-kind souvenirs or gifts to take home.

The Rustic Willow gift shop offers a variety of locally made items, including candles, soaps, and home décor. Visitors can purchase items that represent the area's natural beauty and take a piece of Willow County home with them.

The Country Store is a great place for visitors to stock up on local food products, including jams, jellies, and baked goods. Visitors can also find locally made crafts, souvenirs, and clothing.

The Willowdale Antiques Emporium offers visitors the opportunity to explore the area's rich history and culture through antique items from the area. The shop provides a unique shopping experience that reflects the local history and heritage of Willow County.

The Greenhouse Nursery provides visitors with the opportunity to explore the natural beauty of Willow County, with a wide selection of plants and flowers for sale. Visitors can also take a guided tour of the greenhouse and learn about the local flora and fauna.



Willowdale Artisan Market

Willowdale Shops Economic Impact

Together, these local shops provide visitors with a unique shopping experience that adds value to the tourism product and visitor experience in Willow County. Visitors can purchase locally made products and antiques that represent the area's natural beauty, rich history, and culture. The shops also provide an opportunity for visitors to interact with local residents and learn more about the area.

Locally owned shops play a critical role in creating and sustaining the tourism product of Willow County. These shops provide unique and authentic experiences that visitors are seeking. For instance, the Willowdale Artisan Market showcases the work of local artists and craftsmen, while the Rustic Willow gift shop offers handmade home decor items. These one-of-a-kind offerings add value to the overall tourism product and make the destination stand out from other places.

Moreover, locally owned shops in Willow County often use local materials and ingredients to create their products. This not only supports local businesses and farmers but also highlights the region's distinctiveness. Visitors can experience the county's culture and heritage through these locally sourced products, like the handmade quilts at the Rustic Willow or the homemade jams and jellies at The Country Store.

In addition to providing unique and authentic products, locally owned shops offer visitors personalized customer service. These shops have a more intimate setting, which allows for better interaction between visitors and shopkeepers. Visitors can learn more about the county's history and culture through these conversations, and shopkeepers can make recommendations about other local attractions and activities. The personal touch that these shops provide often leads to repeat visitors and positive word-of-mouth marketing.

Furthermore, locally owned shops in Willow County can serve as ambassadors for the region. They often act as information centers, providing visitors with brochures, maps, and recommendations for other local businesses and attractions. Shopkeepers may also have a strong understanding of the county's history and culture, which allows them to answer visitors' questions and provide additional context for the tourism product.

Lastly, these shops can contribute to the overall aesthetic appeal of the county. The unique storefronts and displays can add charm and character to the towns of Willowdale, Hillcrest, and Woodside. The Greenhouse Nursery, for example, has beautiful flowers and plants that create an inviting atmosphere for visitors. The visually appealing storefronts can encourage visitors to take photos and share them on social media, which can further promote the tourism product of Willow County.



Locally sourced products at The Rustic Willow

Willowdale Shops and the Tourism Ecosystem

The sales tax provided by local shops in Willowdale supports the local infrastructure and quality of life projects in the area. The revenue generated from sales tax goes to the city's general fund, which is then used to fund various projects and services that benefit the community. For example, sales tax revenue can be used to improve roads and bridges, upgrade public facilities such as parks and community centers, and support emergency services like police and fire departments.

In addition, the sales tax revenue generated by local shops helps to promote economic growth in the area. As the revenue is reinvested in the community, it creates more opportunities for businesses to thrive and expand. This, in turn, creates more jobs and provides more products and services for both residents and visitors to the area.

Moreover, the sales tax generated by local shops is an essential source of revenue for the local government to provide essential services to the residents and visitors to the area. This revenue helps the local government to maintain and improve public services like schools, libraries, public transportation, and health services.

The sales tax revenue generated by local shops also helps to improve the overall quality of life for the residents and visitors in the area. For example, the revenue can be used to maintain and improve local parks and recreational facilities, provide cultural events and festivals, and support community organizations that provide social and educational services.

Overall, the sales tax generated by local shops in Willowdale plays a critical role in supporting the local infrastructure, promoting economic growth, and improving the overall quality of life in the area. It is an essential source of revenue that helps the local government to provide essential services, support economic development, and maintain a high standard of living for residents and visitors alike.



Owner of The Rustic Willow setting up a seasonal display

Willowdale Shops and Social Media

Locally owned shops can play a crucial role in spreading awareness of the county tourism brand by leveraging social media to engage with visitors and promote the local area. By showcasing the unique products and experiences offered by their businesses, these shops can generate interest and excitement in the area, encouraging visitors to explore further and stay longer. They can also help to build a sense of community among visitors and residents alike, creating a positive image of the area that can be shared widely on social media platforms.

For example, the Willowdale Artisan Market might share images of locally made crafts and artworks on Instagram, using relevant hashtags and location tags to reach a wider audience. The Rustic Willow gift shop might create Facebook posts showcasing the unique and charming decor available in their store. The Country Store might post updates on Twitter about new and seasonal products available in their shop. Willowdale Antiques Emporium might use Pinterest to curate boards of antique and vintage finds available in their store. The Greenhouse Nursery might create TikTok videos showcasing the beautiful and unique plants and flowers in their greenhouse.

By using social media to showcase their products and services, these shops can help to increase awareness of the county tourism brand, drawing in more visitors and enhancing the overall visitor experience. In turn, the increased interest and engagement generated by these businesses can help to support the local economy and create a more vibrant and thriving community in Willow County.



Willowdale Antiques Emporium

Restaurants in Willowdale

Local restaurants contribute significantly to the tourism product of Willowdale by offering visitors a taste of the local cuisine and culture. They use locally-sourced ingredients and reflect the values and traditions of the community, which makes them an important part of the local culture. They also create jobs and help support the local economy, which benefits the community as a whole. Visitors can enjoy delicious meals and create memories that will last a lifetime, which is what makes these restaurants such an important part of the overall tourism product of Willowdale.

Willow Creek Café is a charming and cozy café located in the heart of Willowdale. It offers a wide variety of coffee drinks, baked goods, and light breakfast and lunch options. The café prides itself on using locally-sourced ingredients, and its menu changes seasonally to reflect the freshest produce available. The café's warm and welcoming atmosphere makes it a popular spot for locals and visitors alike.

The Farmer's Table is a farm-to-table restaurant in Willowdale that serves up delicious and nutritious meals made with locally-sourced ingredients. The menu changes seasonally to reflect the freshest produce available, and the restaurant's commitment to sustainable and ethical farming practices has earned it a loyal following among environmentally-conscious diners. The restaurant also offers cooking classes and workshops to help educate the community about the benefits of local and sustainable agriculture.

The Willowdale Grill & Tavern is a classic American restaurant that serves up hearty and delicious meals in a cozy and welcoming atmosphere. The menu features a variety of classic dishes, as well as some unique and creative twists on old favorites. The restaurant is also known for its extensive beer and wine list, which includes many locally-produced options.

The Bakery at Willow Creek is a popular bakery located in Willowdale that specializes in homemade breads, pastries, and cakes. Everything is made fresh daily, and the bakery uses only the highest quality ingredients. The bakery's warm and welcoming atmosphere, combined with its delicious treats, makes it a popular spot for both locals and visitors.

The Red Barn Diner is a classic diner in Willowdale that serves up all the classic dishes you would expect, such as burgers, fries, and milkshakes. The diner has a cozy and welcoming atmosphere, and its affordable prices make it a popular spot for families and budget-conscious diners. The diner also has a small gift shop, which sells souvenirs and other small items.



Waterfront seating at Willow Creek Cafe

Willowdale Restaurants Economic Impact

The local restaurants in Willowdale, such as Willow Creek Café, The Farmer's Table, The Willowdale Grill & Tavern, The Bakery at Willow Creek, and The Red Barn Diner, have a significant impact on the tourism product and economic vitality of the area. These establishments contribute to the community's culinary landscape, showcasing local ingredients and traditional cuisine to visitors and locals alike. As a result, they attract a diverse range of tourists, from food enthusiasts to casual diners, who come to experience the flavors of Willowdale.

In addition to adding value to the tourism product, these restaurants also serve as economic drivers in the community. They provide employment opportunities for local residents and generate revenue for the local economy. The success of these businesses is often linked to the overall success of the tourism industry in Willowdale, as visitors are more likely to stay longer and spend more money if they have access to quality dining options.

The restaurants in Willowdale also play an important role in promoting the local food culture and culinary traditions of the region. Many of these establishments source their ingredients from local farmers and producers, showcasing the high-quality produce that is available in the area. By doing so, they help to build relationships between farmers, producers, and consumers, and contribute to the overall sustainability of the local food system.

Moreover, these restaurants offer unique and memorable dining experiences that contribute to the overall sense of place in Willowdale. For example, The Red Barn Diner is a popular spot that features a classic diner ambiance and menu, while The Farmer's Table offers farm-to-table cuisine in a cozy, rustic setting. These experiences are not only enjoyable for visitors but also help to build a positive reputation for the area.

Finally, these restaurants help to create a sense of community in Willowdale. They provide a space for residents and visitors to gather, share stories, and connect with one another. As a result, they contribute to the social fabric of the community and create a welcoming and inclusive atmosphere that is essential to the tourism industry.

In summary, the local restaurants in Willowdale are an essential component of the area's tourism product and economic vitality. They add value to the tourism experience, promote local food culture, provide employment opportunities, and contribute to the social fabric of the community.



Bakery at Willow Creek

Willowdale Restaurants and the Tourism Ecosystem

Restaurants in Willowdale play a vital role in the local tourism ecosystem by providing hospitality tax on prepared food and beverages. The tax generated from these purchases is a significant source of revenue for the city and the county, which is then used to fund tourism-related initiatives and infrastructure improvements. This revenue helps to maintain and improve the quality of life in the community and ensure that visitors have an enjoyable experience when they come to the area.

In addition to the hospitality tax generated by restaurants, these establishments also provide a critical service to tourists and other visitors. Restaurants offer visitors a chance to experience the local cuisine and culture, which is an important part of any travel experience. By providing a variety of dining options that reflect the area's unique identity, restaurants help to create a sense of place that is attractive to tourists and encourages them to return in the future.

Restaurants in Willowdale also provide jobs for the local community, which helps to boost the local economy. Many of these jobs are in the service industry, which can be a valuable source of employment for individuals with limited job prospects. The availability of jobs in the restaurant industry also helps to attract young people and other newcomers to the area, which can lead to a more diverse and vibrant community.

Moreover, restaurants in Willowdale can also use social media to promote their businesses and the local tourism ecosystem. By sharing information about local events, attractions, and other tourism-related initiatives, restaurants can help to increase awareness of the area and generate interest from potential visitors. Additionally, restaurants can also collaborate with other local businesses to create tourism packages and promotions that encourage visitors to explore the area.

In summary, restaurants in Willowdale are a critical component of the local tourism ecosystem. They provide a vital source of revenue for the city and county, offer visitors a chance to experience the local cuisine and culture, create jobs for the local community, and help to promote the area through social media and other channels. As such, these establishments play an essential role in supporting the overall economic vitality and quality of life in the community.



Interior of The Farmer's Table Restaurant

Willowdale Restaurants and Social Media

Social media is a powerful tool that local restaurants in Willowdale can use to increase their visibility and reach a wider audience. By sharing photos and information about their menus, specials, and events on platforms like Facebook, Instagram, and Twitter, these restaurants can attract more customers and build a loyal following.

One way that restaurants can leverage the overall tourism product is by promoting local events and attractions on their social media accounts. For example, if there is a big music festival or outdoor market happening in Willowdale, restaurants can share information about it and offer special deals for visitors who come to town for the event.

Another way that local restaurants can use social media is by collaborating with other businesses in Willowdale. By partnering with nearby shops or attractions, restaurants can cross-promote each other and offer package deals that include discounts or freebies.

Sharing photos and reviews from satisfied customers is another effective way for restaurants to use social media to their advantage. By encouraging diners to share their experiences and tag the restaurant in their posts, the restaurant can reach a wider audience and build a positive reputation.

In addition to social media, local restaurants in Willowdale can also use email marketing to keep in touch with customers and promote their business. By building a mailing list and sending out regular newsletters or promotions, restaurants can keep their brand top-of-mind and encourage repeat visits.

Finally, local restaurants can contribute to the overall tourism product of Willowdale by participating in local food and drink events. By showcasing their cuisine at festivals or offering special menus during restaurant week, these businesses can attract foodies and increase their exposure in the community.



Red Barn Diner

Lodging in Willowdale

Local lodging properties are an essential part of Willowdale's tourism product, and there are several options for visitors to choose from. One of the most popular and well-known is the Willowdale Inn, located in the heart of the town. This historic inn has been operating for over a century and offers comfortable rooms and suites, as well as on-site dining and event facilities.

Another local lodging option in Willowdale is the Silver Springs Lodge & Spa, which offers guests a luxurious and relaxing experience. The lodge features a variety of accommodations, including guest rooms, cabins, and cottages, as well as a full-service spa and several outdoor recreational activities.

For visitors seeking a more intimate and personalized experience, the Farmhouse Bed & Breakfast is an excellent choice. This charming property is located just outside of town and features cozy guest rooms and a beautiful, tranquil setting.

Willow Creek Cabins are another popular lodging option for visitors to Willowdale. These cozy and rustic cabins are located in a peaceful, wooded area and offer a unique and authentic experience for guests.

Finally, the Creekside Inn is a charming bed and breakfast located just a short drive from Willowdale. This historic property features comfortable guest rooms and a beautiful garden setting, making it a great choice for visitors seeking a peaceful and relaxing getaway.



Farmhouse Bed & Breakfast

Willowdale Lodging Economic Impact

All of these local lodging properties contribute to the tourism product of Willowdale by offering visitors a range of options to choose from, whether they're looking for historic charm, luxury amenities, or a peaceful retreat in the countryside. The variety of accommodations available also helps to attract different types of visitors and ensures that there is something for everyone in Willowdale.

In addition to their accommodations, many of these local lodging properties also offer on-site dining options, spa services, or recreational activities, which further enhance the visitor experience and contribute to the overall tourism product of the town.

Local lodging properties in Willowdale also contribute to the economic vitality of the town by providing jobs and supporting other local businesses. Visitors who stay at these properties are likely to spend money at nearby shops, restaurants, and attractions, which helps to generate revenue and create a more sustainable local economy.

Finally, local lodging properties can also help to promote the overall tourism product of Willowdale by showcasing the town's unique character and attractions to their guests. Many of these properties have a strong online presence and can use social media and other digital marketing tools to reach potential visitors and promote the town as a destination.

Overall, the local lodging properties in Willowdale are a crucial part of the town's tourism product and contribute significantly to its economic vitality and overall appeal as a destination.



Silver Springs Lodge & Spa

Willowdale Lodging and the Tourism Ecosystem

Local lodging properties are essential to supporting the tourism ecosystem of a destination, as they provide overnight accommodations for tourists visiting the area. One important way that these properties contribute to the local economy is through the accommodations tax. Accommodations taxes are taxes that are imposed on visitors who stay overnight in hotels, motels, and other types of lodging accommodations. The revenue from these taxes is often used to fund local tourism marketing efforts, promote the area to potential visitors, and support local tourism-related businesses.

The accommodations tax is an important source of revenue for many destinations, and it can help support the growth and development of the tourism industry. By contributing to the accommodations tax, local lodging properties play an important role in supporting the local economy and the tourism ecosystem. The revenue generated from the tax helps to fund important initiatives and programs that can benefit the entire community, such as the development of new attractions, the improvement of local infrastructure, and the promotion of the area to potential visitors.

In addition to the financial benefits, local lodging properties can also contribute to the tourism ecosystem by providing high-quality accommodations and experiences for visitors. By offering a comfortable, welcoming place to stay, these properties can help enhance the overall visitor experience and create positive word-of-mouth marketing. They can also offer unique amenities and experiences that can help differentiate the destination from other places and attract more visitors.

Furthermore, local lodging properties can partner with other tourism-related businesses in the area to create package deals and other promotional offers. For example, a local bed and breakfast might team up with a local tour operator to offer a special package that includes a stay at the B&B and a guided tour of the area's historic sites. By working together in this way, local businesses can create more compelling and attractive tourism products that are more likely to appeal to a wider range of visitors.

Overall, the local lodging properties in Willowdale play a crucial role in supporting the local tourism ecosystem. Through the accommodations tax, the high-quality visitor experiences they offer, and their partnerships with other local businesses, these properties help to create a more vibrant, dynamic, and successful tourism industry that benefits the entire community.



The Willowdale Inn on Main Street

Willowdale Lodging and Social Media

Local lodging properties in Willowdale can use social media to grow the destination brand by showcasing their unique accommodations and amenities to potential visitors. By using platforms like Instagram and Facebook, lodging properties can share high-quality photos and videos of their rooms, common areas, and outdoor spaces to give followers a sense of what it's like to stay there. They can also use these platforms to highlight any special promotions or packages they may be offering to entice travelers to book with them.

Additionally, social media allows lodging properties to engage with visitors and potential customers by answering questions, responding to reviews, and sharing local insights about the area. By providing exceptional customer service and building relationships with guests, lodging properties can generate positive word-of-mouth and encourage repeat visits. Social media can also be used to share user-generated content, such as photos and reviews posted by guests, which can help build trust and credibility with potential visitors.

Lodging properties can also collaborate with other local businesses and attractions to create social media campaigns and promotions that showcase the destination as a whole. By working together, businesses can cross-promote each other and highlight the unique experiences available in Willowdale. For example, a lodging property could partner with a local restaurant to offer a special package that includes a dining voucher, or team up with a nearby attraction to offer discounted tickets.

Finally, by using social media to engage with visitors and potential customers, lodging properties can gather valuable feedback and insights that can help them improve their offerings and better meet the needs of travelers. By monitoring comments and reviews, lodging properties can identify areas for improvement and make necessary changes to enhance the visitor experience. This, in turn, can lead to positive reviews and recommendations, which can help attract more visitors to the destination.



Willow Creek Cabins

Willowdale Museums & Attractions

The museums and attractions in Willowdale add tremendous value to the town's tourism product. They provide visitors with unique and memorable experiences that showcase the town's history, culture, and natural beauty. They are essential to the town's economy, as they bring in tourism dollars and provide jobs to the local community.

River Hills Valley Zoo is a popular attraction in Willowdale and contributes to the tourism product of the town. The zoo has a variety of animals, including tigers, lions, bears, and more, which attracts many visitors from both within and outside the town. The zoo also hosts various events throughout the year, which adds to the visitor experience.

The Willowdale Historical Society Museum is a valuable asset to the town's tourism product as it showcases the rich history of the area. Visitors can learn about the town's founding and the significant events and individuals that have shaped it into what it is today. The museum has a collection of artifacts and documents that help tell the story of the town and provide a glimpse into the past.

The Willow Creek Nature Center is a beautiful nature reserve that provides an opportunity for visitors to explore the local flora and fauna. The center features walking trails, picnic areas, and a variety of wildlife habitats that visitors can explore. It's a peaceful and serene place that is perfect for nature lovers looking for a break from the hustle and bustle of city life.

The Artisan's Studio is a place where visitors can experience the creativity and craftsmanship of the local artists. The studio features a variety of works, including paintings, pottery, jewelry, and more. Visitors can watch the artists at work and even purchase some of their pieces, which makes for a unique souvenir and supports local artisans.

The Willowdale Cultural Center is an excellent place for visitors to experience the local culture and art. The center features exhibits and performances by local artists, musicians, and writers. Visitors can attend plays, concerts, and art shows and learn more about the town's creative community.



River Hills Valley Zoo

Willowdale Museums & Attractions Economic Impact

The museums and attractions in Willowdale play a significant role in the local economy, not only through job creation but also by drawing visitors who spend money on local businesses. These cultural institutions provide direct employment opportunities in areas like operations, maintenance, programming, and marketing, which often requires hiring local residents. This can help to bolster the local economy and provide income for community members.

In addition to direct employment opportunities, these institutions often draw large numbers of visitors to the area, who spend money on local businesses like restaurants, shops, and lodging. This generates indirect economic benefits, as visitors' spending circulates through the local economy, supporting jobs and creating a multiplier effect that can be felt throughout the community.

Museums and attractions can also drive repeat visitation, as visitors who have a positive experience are more likely to return and recommend the destination to others. This can help to create a loyal base of visitors who return year after year, contributing to the sustainability of the local tourism industry.

By showcasing the unique history, culture, and natural beauty of the area, museums and attractions also help to differentiate Willowdale from other destinations and create a strong sense of place. This can help to attract visitors who are seeking an authentic and meaningful travel experience, which can be more valuable to the local economy in the long term.

Finally, museums and attractions can play a role in preserving the cultural and natural heritage of the area, which can help to protect the community's identity and character. This can be important not only for tourism but also for local residents, who may have a strong connection to the land and the stories that have shaped it.

Overall, the museums and attractions in Willowdale are important contributors to the local economy and the community's sense of place. By highlighting the unique features of the area and providing meaningful visitor experiences, these institutions help to create a sustainable and vibrant tourism industry that benefits local residents and visitors alike.



Willowdale Historical Society Museum

Willowdale Museums & Attractions and the Tourism Ecosystem

Museums and attractions in Willowdale contribute to the tourism infrastructure by providing admissions tax revenue. Admissions tax is a local tax levied on patrons who purchase tickets to an event, such as a museum or attraction. This tax revenue helps to support the local government and pay for public services such as infrastructure maintenance, public safety, and education.

In addition to the revenue generated by admissions tax, museums and attractions help to draw visitors to the area and generate additional spending on local businesses such as restaurants, shops, and lodging properties. This creates a multiplier effect, where the initial spending generated by the museum or attraction is circulated throughout the local economy, supporting businesses and creating jobs.

Museums and attractions also help to create a sense of place and cultural identity for the destination, which can encourage repeat visitation and help to differentiate the destination from competitors. The cultural and historical significance of local museums and attractions can also provide educational opportunities and foster appreciation for the local community and its history.

Overall, museums and attractions play an important role in the tourism infrastructure of Willowdale by contributing to the local economy, generating tax revenue, and creating a unique sense of place and cultural identity for the destination



Willow Creek Nature Center

Willowdale Museums & Attractions and Social Media

Museums and attractions in Willowdale can leverage social media to grow the tourism brand of the overall area by sharing engaging and informative content about their offerings. They can post updates on upcoming events, new exhibits, and special promotions that will encourage followers to visit. They can also share interesting stories and facts about the history and culture of Willowdale, as well as photos and videos that showcase the beauty of the area.

One way museums and attractions can leverage social media is by encouraging visitors to share their experiences online. They can create a unique hashtag and ask visitors to use it when posting photos or comments about their visit. This can help spread the word about the attraction and encourage others to come and visit. Museums and attractions can also run social media contests that ask followers to share photos or stories related to the attraction, with prizes such as free admission or gift shop merchandise.

Another way museums and attractions can use social media to grow the tourism brand is by partnering with local businesses and organizations. They can collaborate on social media campaigns that promote the overall area and its unique offerings, which can help to attract new visitors. They can also cross-promote each other's social media accounts, which can increase exposure and engagement for everyone involved.

Museums and attractions can also use social media to keep visitors engaged even after they leave. They can share updates on new exhibits, special events, and upcoming programs to encourage visitors to come back. They can also post educational content related to the museum or attraction, such as articles or videos that provide additional information or context about the exhibits. By keeping visitors engaged and informed, museums and attractions can help build a loyal following that will continue to support and promote the tourism brand of Willowdale.



The Artisan's Studio

Willowdale Outdoor Activities

Willowdale boasts a range of outdoor activities for visitors to enjoy. The Willow Creek Canoe & Kayak Rentals provides an opportunity to explore the picturesque Willow Creek in a fun and unique way. The rental service offers a variety of boats and equipment, along with shuttle services to and from the creek.

The Willow Creek Hiking Trails offer scenic walks through the beautiful natural surroundings of Willowdale. With a range of hiking routes available, there is something for all levels of experience. The trails offer a chance to escape the hustle and bustle of everyday life and immerse oneself in the beauty of the great outdoors.

The Willowdale Fishing & Hunting Club provides a unique experience for outdoor enthusiasts. The club offers fishing, hunting, and trapping opportunities for members and visitors alike. With expert guides and a range of equipment available for rental, visitors can explore the wilderness of Willowdale with ease.

The Willow Creek Golf Course is a must-visit for golf enthusiasts. The picturesque course is set amongst stunning natural scenery and provides a challenging yet enjoyable game of golf. With top-quality facilities and expert instructors, the Willow Creek Golf Course is a popular choice for both locals and visitors.

The Willowdale Equestrian Center provides a unique opportunity to explore the area on horseback. The center offers horseback riding lessons for all ages and skill levels, and also hosts events and shows throughout the year. Visitors can enjoy a relaxing ride through the picturesque countryside of Willowdale and experience the area in a whole new way.

For those looking for a more adrenaline-fueled outdoor activity, the Willowdale Motorsports Park offers a range of exciting options. The park offers motocross, dirt bike, and ATV rentals and tracks, along with expert instructors and safety gear. Visitors can experience the thrill of high-speed off-road riding while surrounded by the beautiful natural surroundings of Willowdale.

Overall, Willowdale's outdoor activities provide a unique and immersive experience for visitors to the area. Whether exploring the creek by canoe, hiking through the trails, or experiencing the excitement of motorsports, there is something for everyone to enjoy.



Willow Creek Canoe & Kayak Rentals

Willowdale Outdoor Activities Economic Impact

Outdoor activities in Willowdale have a significant economic impact on the local economy. The revenue generated from tourism activities in the area is a significant source of income for local businesses, and it is one of the main drivers of the local economy. The businesses that cater to outdoor enthusiasts, such as outfitters, guides, and rental shops, create jobs and generate revenue for the local economy. This in turn helps to support the local community and its infrastructure.

Outdoor activities also have a positive impact on the real estate market in the area. Many people are drawn to areas with a variety of outdoor activities, which can increase the demand for homes and properties. This increased demand can lead to rising property values, and can help to boost the local economy further. Outdoor activities can also help to create a sense of community and can bring people together, which can help to build a strong local economy.

The revenue generated by outdoor activities can help to fund public services and infrastructure, such as parks, trails, and community facilities. The taxes generated from the sale of outdoor equipment, licenses, and permits can be used to fund these public services, which can benefit both tourists and local residents. This can help to make Willowdale a more attractive destination for outdoor enthusiasts, and can help to ensure that the area remains a desirable place to live.

The economic impact of outdoor activities in Willowdale can also be seen in the local service industry. Restaurants, bars, and cafes that cater to outdoor enthusiasts can generate significant revenue, and can provide jobs for local residents. This helps to create a vibrant and thriving local economy, which can help to attract even more visitors to the area.

Outdoor activities can also have a positive impact on the health and well-being of local residents. By providing opportunities for exercise and outdoor recreation, Willowdale's natural assets can help to promote healthy living and an active lifestyle. This can help to attract residents who value outdoor activities, and can help to create a strong sense of community in the area.

Overall, the economic impact of outdoor activities in Willowdale is significant, and it plays an important role in the local economy. By attracting tourists, supporting local businesses, and contributing to the quality of life for local residents, outdoor activities are an essential part of Willowdale's tourism infrastructure.



Willow Creek Hiking Trails

Willowdale Outdoor Activities and the Tourism Ecosystem

While outdoor activities in Willowdale, such as hiking and fishing, do not provide direct tax revenue, they still serve an important role in the local tourism ecosystem. Outdoor activities can be a primary driver of visitors to the area and can help to stimulate economic activity. Visitors who come to enjoy the natural beauty of the area may still spend money on other tourism-related activities, such as dining, shopping, and staying in local lodging. Additionally, outdoor activities can help to create a positive image for the area and attract future visitors who may be more likely to spend money on other tourism-related activities.

Furthermore, outdoor activities can help to support local businesses that are indirectly related to tourism, such as outfitters, sporting goods stores, and equipment rental companies. These businesses may provide services and equipment for outdoor activities, and may benefit from increased demand during peak tourism seasons. This can help to create jobs and stimulate economic activity, even in industries that may not directly provide tax revenue.

In addition, outdoor activities can help to support local conservation efforts and create a sense of community pride. Natural areas, such as parks and hiking trails, are often maintained through a combination of public and private funding. By drawing attention to these areas and promoting their use, outdoor activities can help to create a sense of shared responsibility for the environment and a shared appreciation for the area's natural beauty.

Overall, while outdoor activities in Willowdale may not provide direct tax revenue, they serve an important role in the local tourism ecosystem by attracting visitors, supporting related businesses, and creating a sense of community pride.



Willowdale Hunting & Fishing Club

Willowdale Outdoor Activities and Social Media

Outdoor activities in Willowdale can play a significant role in the regional tourism social media efforts by providing visually appealing and shareable content that can attract potential visitors to the area. Visitors may post pictures and videos of their outdoor adventures on social media platforms, showcasing the beauty of the Willowdale area and the activities that are available. Local businesses and tourism organizations can also leverage social media by sharing posts, photos, and videos that highlight the natural beauty and outdoor activities in the area.

Social media can also be used to provide information about outdoor activities, such as trail maps, rental information, and safety tips. This can help visitors plan their activities and ensure they have a safe and enjoyable experience. Social media can also be used to provide updates on trail conditions, fishing and hunting seasons, and other important information that may impact outdoor activities in the area.

Additionally, social media can help connect visitors with local outfitters, guides, and tour operators that offer outdoor activities in the area. By promoting these businesses on social media, visitors can learn about the services they offer, the types of activities available, and how to book their experience. This can be especially helpful for visitors who are new to the area or unfamiliar with the outdoor activities available.

Outdoor activities can also be used to promote the overall tourism brand of the Willowdale area. By showcasing the natural beauty of the region and the unique activities available, social media can help build a positive perception of the area as a whole. This can help attract new visitors to the area and encourage them to explore all that Willowdale has to offer.

Overall, outdoor activities in Willowdale can be a valuable asset to the regional tourism social media efforts. By providing visually appealing content, valuable information, and promoting local businesses, social media can help attract visitors to the area and promote the overall tourism brand.



Willow Creek Golf Course

Closing Remarks on Willowdale

Willowdale is a significant contributor to the tourism product of Willow County, with a variety of attractions, activities, and businesses that draw visitors to the area. From the local shops to the outdoor activities, Willowdale offers a diverse range of experiences that visitors can enjoy.

Local shops like the Willowdale Artisan Market, The Rustic Willow gift shop, The Country Store, Willowdale Antiques Emporium, and The Greenhouse Nursery add value to the tourism product by providing a unique shopping experience that highlights local products and crafts. These shops also help spread awareness of the county tourism brand through social media and by word of mouth.

Restaurants in Willowdale like Willow Creek Café, The Farmer's Table, The Willowdale Grill & Tavern, The Bakery at Willow Creek, and The Red Barn Diner also add value to the tourism product by providing local and regional cuisine that visitors can savor. These restaurants are part of the tourism ecosystem by providing hospitality tax on prepared food and beverage.

Local lodging properties like the Willowdale Inn, Silver Springs Lodge & Spa, The Farmhouse Bed & Breakfast, Willow Creek Cabins, and The Creekside Inn provide visitors with a comfortable place to stay while exploring the area. These properties support the tourism ecosystem through accommodations tax, which goes towards local tourism promotion efforts and further develops the destination brand.

Museums and attractions like River Hills Valley Zoo, Willowdale Historical Society Museum, Willow Creek Nature Center, The Artisan's Studio, and Willowdale Cultural Center provide visitors with educational and cultural experiences that showcase the area's heritage and beauty. These attractions contribute to the tourism ecosystem by providing admissions tax revenue.

Outdoor activities in Willowdale like Willow Creek Canoe & Kayak Rentals, Willow Creek Hiking Trails, Willowdale Fishing & Hunting Club, Willow Creek Golf Course, and Willowdale Equestrian Center provide visitors with a chance to explore the natural beauty of the area. These activities are mostly free admission and cost and serve as the primary driver of visitors in the local tourism ecosystem.

These types of tourism assets come together to form a major component of the Willow County destination product, with each attraction and activity contributing to the overall appeal of the area. The combination of unique shopping experiences, diverse cuisine, comfortable lodging, educational and cultural experiences, and outdoor activities create a well-rounded and attractive destination for visitors.

The Willowdale area is also able to leverage social media and the overall tourism product to spread the word about the area's unique offerings, attract new visitors, and encourage repeat visits. By showcasing the area's natural beauty, cultural and historical heritage, and unique local businesses and attractions, the Willowdale area can continue to grow and thrive as a top destination in Willow County.



Historic Main Street Willowdale

About Hillcrest

Hillcrest is a small town located in Willow County, southeast of Willowdale. It was founded in the early 1850s by a group of settlers who were attracted to the area by the abundance of natural resources and the stunning views of the surrounding hills.

The town was initially named after the hill on which it was built, and it quickly grew into a thriving community. In the early 1900s, Hillcrest became known for its lumber industry, with several sawmills operating in the area.

As the town continued to grow, it became a popular destination for tourists and outdoor enthusiasts. The Hillcrest Country Club, established in the 1920s, became a popular spot for golfing and social events.

Today, Hillcrest is a charming and picturesque town with a population of around 3100 people. It is known for its beautiful parks and recreational areas, as well as its rich history and strong sense of community.

Hillcrest is a small town located in the rolling hills of Willow County, known for its peaceful and scenic surroundings. The town is home to a variety of small businesses, including a charming bakery, a cozy coffee shop, and a well-regarded restaurant that serves locally-sourced dishes. Many residents of Hillcrest are involved in the agricultural industry, and the town is known for its annual Harvest Festival, which celebrates the local bounty with food, music, and games. The town is also home to several parks and recreational areas, including a popular hiking trail that leads to a lookout point with breathtaking views of the surrounding countryside.

According to local legend, the hill in Hillcrest was named after a group of early settlers who were traveling through the area. They were searching for a new place to settle and were drawn to the area by the beautiful rolling hills. As they made their way up one particularly steep hill, they were overcome with a sense of awe and appreciation for the breathtaking views. They decided to name the hill "Hillcrest" in honor of the beautiful vistas that stretched out before them. The name stuck, and the town of Hillcrest was born. Today, the hill is still a popular spot for visitors to hike and take in the stunning views of the surrounding landscape.



Historic Downtown Hillcrest

List of Tourism Assets in Hillcrest

Bakery Bliss: a locally owned bakery that specializes in homemade breads, pastries, and cakes

The Cozy Cup: a charming coffee shop that serves a variety of hot and cold beverages, including locally roasted coffee and artisanal teas

Harvest Kitchen: a well-regarded restaurant that focuses on using locally-sourced ingredients to create delicious and innovative dishes

Hillcrest Farmers Market: a weekly market where local farmers and artisans sell their fresh produce, handmade crafts, and other goods

Hillcrest Hiking Co.: a local tour company that offers guided hikes and nature walks through the town's scenic hills and forests

The Harvest Festival: an annual celebration of the town's agricultural heritage, featuring food, music, and games for all ages

Hillcrest Heritage Museum: a small museum that showcases the town's history and culture, with exhibits on local industries, notable residents, and historical events

Hillcrest Inn: a cozy bed and breakfast that offers comfortable accommodations in the heart of town

Hillcrest Park: a public park with hiking trails, picnic areas, and playgrounds for kids

The Hillcrest Artisan Collective: a community of local artists and craftspeople who sell their handmade wares in a shared storefront.



Bakery Bliss serves fresh pastries daily, made with all local ingredients

Summary of Tourism Assets in Hillcrest

Tourism-related businesses in Hillcrest, such as the bakery, coffee shop, and locally-sourced restaurant, contribute to its sense of place by offering unique and authentic experiences that reflect the local community and its values.

These businesses offer visitors a taste of the town's culinary scene, which is known for its locally-sourced ingredients and farm-to-table approach. The Harvest Festival, which celebrates the local bounty, is another example of how Hillcrest's businesses contribute to its sense of place by showcasing the town's agricultural heritage and bringing the community together.

Additionally, the town's parks and recreational areas offer visitors the opportunity to experience the natural beauty of the area and engage in outdoor activities that are popular with the local community. Overall, the businesses and attractions in Hillcrest create a sense of place that is welcoming, authentic, and reflective of the town's history and values.



The Cozy Cup in the historic Thompson Building

Hillcrest SWOT Analysis

Hillcrest's tourism assets showcase the town's agricultural heritage, cultural offerings, and natural beauty. Its strengths include a diverse range of local businesses, such as the Bakery Bliss, Hillcrest Farmers Market, and the Hillcrest Hiking Co. The town also benefits from a charming and authentic atmosphere, as well as its central location in Willow County. However, Hillcrest's relatively small size may limit its appeal to some visitors, and its attractions may not be enough to warrant a trip solely to the town.

The strengths of Hillcrest's tourism assets include its diverse range of local businesses, such as the Bakery Bliss, Hillcrest Farmers Market, and the Hillcrest Hiking Co. The town's agricultural heritage and natural beauty also provide unique attractions for visitors. Hillcrest's central location in Willow County and its authentic atmosphere may also appeal to tourists seeking a small-town experience. However, the town's relatively small size may limit its overall appeal to some visitors, and the lack of major attractions may make it less compelling for those seeking more robust tourist offerings.

One of the weaknesses of Hillcrest's tourism assets is the limited scale of its businesses, which may not be able to accommodate large numbers of visitors. Additionally, Hillcrest's attractions may not be enough to warrant a trip solely to the town, and the town's location may limit its overall visibility to tourists. Finally, the town's rural location may make it difficult to attract visitors who are primarily interested in urban or beach destinations.

There are several opportunities for Hillcrest's tourism assets, such as expanding its business offerings, capitalizing on its unique agricultural heritage, and developing new events and festivals. Hillcrest could also benefit from improved marketing and visibility, such as through targeted social media campaigns and increased collaboration with other towns in the region. Finally, the town's natural beauty and outdoor offerings provide ample opportunities for ecotourism and outdoor recreation.

One of the threats to Hillcrest's tourism assets is the ongoing COVID-19 pandemic, which may limit travel and overall tourism demand. Additionally, the town may face competition from other small towns and attractions in the region, which could limit its overall visitor appeal. Finally, the town may be susceptible to natural disasters and environmental threats, such as droughts, wildfires, and flooding, which could impact the tourism industry.



Fresh, locally-sourced ingredients at Harvest Kitchen

Hillcrest Visitor Personas

Foodies: Hillcrest's well-regarded restaurant that serves locally-sourced dishes and charming bakery may attract food enthusiasts who are interested in trying out new and unique dishes.

Nature lovers: Hillcrest's scenic surroundings, parks and recreational areas, and popular hiking trail may attract visitors who enjoy spending time in nature, hiking and exploring the outdoors.

Coffee lovers: The cozy coffee shop in Hillcrest may attract visitors who enjoy sipping a hot cup of coffee while relaxing and soaking in the small-town atmosphere.

Agricultural enthusiasts: Hillcrest's Harvest Festival, which celebrates the local bounty with food, music, and games, may attract visitors who are interested in the agricultural industry and want to learn more about the local farming community.

Overall, visitors to Hillcrest may be interested in experiencing the town's small-town charm, natural beauty, and local culinary scene.



Local farms offer agritourism opportunities to Hillcrest visitors

Hillcrest Economic Impact

Bakery Bliss, The Cozy Cup, Harvest Kitchen, and Hillcrest Farmers Market all contribute to the economic vitality of Hillcrest by generating revenue through the sale of goods and services. These businesses attract locals and visitors alike, creating a positive impact on the local economy.

Hillcrest Hiking Co. contributes to the local economy by offering guided hikes and nature walks, which generates revenue through tour fees. Additionally, this business attracts tourists to Hillcrest and helps to showcase the natural beauty of the area.

The Harvest Festival generates revenue for Hillcrest through the sale of tickets and concessions, and it also attracts tourists to the town. This annual event helps to promote Hillcrest's agricultural heritage and provides a boost to the local economy.

Hillcrest Heritage Museum is a cultural asset that provides educational and entertainment opportunities for visitors. This museum is a draw for tourists, and it contributes to the local economy through admissions revenue and gift shop sales.

Hillcrest Inn generates revenue through the rental of rooms to visitors. This bed and breakfast also attracts tourists to Hillcrest, contributing to the local economy.

Hillcrest Park is a free public park, but it still plays an important role in the local tourism ecosystem. This park is a draw for visitors, who may spend money on nearby businesses while in the area.

The Hillcrest Artisan Collective contributes to the local economy by selling handmade wares in a shared storefront. This business showcases the creativity and talent of local artists, and it attracts visitors to the area.



Hillcrest Farmers Market on Historic Main Street

Hillcrest Tourism Ecosystem

The tourism assets in Hillcrest play a critical role in the town's tourism ecosystem by providing visitors with a range of unique experiences that showcase the town's character and appeal. The businesses, attractions, and events mentioned above contribute to the local economy in several ways. For instance, Bakery Bliss, The Cozy Cup, and Harvest Kitchen generate sales tax revenue by selling food and beverages to tourists and locals alike. Hillcrest Farmers Market also generates sales tax revenue by providing a platform for local farmers and artisans to sell their goods. Similarly, Hillcrest Heritage Museum and The Hillcrest Artisan Collective can also generate admissions tax revenue.

Hillcrest Inn contributes to the town's economy by providing accommodations to visitors, generating accommodations tax revenue. The Inn provides a unique lodging experience that attracts visitors looking for a more personalized and authentic experience. This property, along with other accommodations providers in the area, helps to increase the length of visitor stays in the town, thereby increasing visitor spending and boosting the local economy.

Hillcrest Hiking Co. is a tour company that offers guided hikes and nature walks through the town's scenic hills and forests. By providing a unique outdoor experience to visitors, the company attracts tourists to the area and provides a different way for visitors to experience the town. The company's offerings can be a primary driver of tourism, as outdoor activities are often the main reason people visit Hillcrest.

The Harvest Festival is an annual event that celebrates the town's agricultural heritage. The festival generates hospitality tax revenue by local restaurants and food trucks with a venue to showcase their best dishes while visitors are entertained with music and games for all ages. This event can be a primary driver of tourism, as people may travel to Hillcrest specifically for the festival.

Hillcrest Park, a public park with hiking trails, picnic areas, and playgrounds for kids, also provides free outdoor activities to visitors. While it does not generate tax revenue directly, the park can be a primary driver of tourism by providing visitors with a reason to come to the town.

In summary, the tourism assets in Hillcrest provide visitors with a range of unique experiences that contribute to the town's economy in several ways. The businesses and events mentioned above can generate sales tax, admissions tax, hospitality tax, and accommodations tax revenue. Additionally, Hillcrest's outdoor activities, parks, and hiking trails can serve as the primary drivers of tourism, as they offer free or low-cost activities that attract visitors to the area.



The annual Hillcrest Harvest Festival brings attendees from all over the Midwest

Hillcrest Tourism Assets and Social Media

Local businesses in Hillcrest can leverage social media to grow the destination brand of Willow County by using various social media platforms to increase their online presence and engage with potential visitors. Here are some ways they can do so:

Showcasing their products and services: By posting high-quality images and descriptions of their products and services, businesses can entice potential visitors to come and check them out. For instance, Bakery Bliss can post pictures of their fresh pastries and cakes, and Hillcrest Hiking Co. can post pictures of their guided hikes and the scenic views visitors can expect to see.

Running promotions and contests: Businesses can create social media campaigns that offer promotions and contests to entice people to visit their establishment. For example, the Cozy Cup can run a contest where people can win free coffee for a month by tagging their friends on social media and sharing the post.

Engaging with visitors: Responding to visitor comments and feedback on social media can help businesses create a personal connection with their audience. This can lead to repeat business and positive word-of-mouth recommendations.

Partnering with influencers: Businesses can partner with social media influencers who have a large following to promote their products or services. For example, the Hillcrest Artisan Collective can partner with a local influencer who is passionate about handmade goods and have them post about the collective on their social media.

Creating shareable content: By creating and sharing informative or entertaining content, businesses can attract potential visitors and encourage them to share their content with others. For instance, Hillcrest Farmers Market can create social media posts that share recipes featuring the fresh produce sold at the market.

Using hashtags: By using relevant hashtags on their social media posts, businesses can increase their reach and visibility on social media. For instance, Hillcrest Inn can use hashtags such as #bedandbreakfast or #getaway to attract people searching for accommodation in the area.

By implementing these strategies, the tourism businesses in Hillcrest can use social media to reach a wider audience, increase their brand awareness, and attract more visitors to Willow County.



Hillcrest Hiking Co. reconnects visitors with nature by offering guided tours of the surrounding trails

Hillcrest Closing Remarks

Hillcrest is a charming town that offers a wide variety of tourism assets. Bakery Bliss is a local bakery that specializes in homemade bread, pastries, and cakes. It's a popular spot for breakfast and brunch, and many tourists stop by for a sweet treat or a cup of coffee. The Cozy Cup is a charming coffee shop that serves locally roasted coffee and artisanal teas, and is a popular spot for locals and tourists alike to relax and unwind.

Harvest Kitchen is a well-regarded restaurant that focuses on using locally sourced ingredients to create delicious and innovative dishes. Many tourists visit Hillcrest specifically to dine at this restaurant. The Hillcrest Farmers Market is a weekly market where local farmers and artisans sell their fresh produce, handmade crafts, and other goods. The market is a great place to pick up fresh, local ingredients or unique souvenirs.

Hillcrest Hiking Co. is a local tour company that offers guided hikes and nature walks through the town's scenic hills and forests. This is a great way for tourists to explore the area and learn more about the local flora and fauna. The Harvest Festival is an annual celebration of the town's agricultural heritage, featuring food, music, and games for all ages. It's a fun and festive event that draws many tourists each year.

Hillcrest Heritage Museum is a small museum that showcases the town's history and culture, with exhibits on local industries, notable residents, and historical events. It's a great place for tourists to learn about the town's past and gain a deeper appreciation for the area. Hillcrest Inn is a cozy bed and breakfast that offers comfortable accommodations in the heart of town. It's a popular lodging option for tourists who want to experience the charm of Hillcrest.

Hillcrest Park is a public park with hiking trails, picnic areas, and playgrounds for kids. It's a great place for tourists to relax and enjoy the outdoors, and it offers stunning views of the surrounding hills. Finally, the Hillcrest Artisan Collective is a community of local artists and craftspeople who sell their handmade wares in a shared storefront. It's a great place to find unique and locally made gifts and souvenirs to bring home.

Overall, Hillcrest's tourism assets offer a unique and charming experience for visitors. Whether it's enjoying a sweet treat from Bakery Bliss or exploring the town's history at the Heritage Museum, there is something for everyone to enjoy. The town's focus on local, sustainable agriculture and culture is a major strength, as is the range of outdoor activities and attractions. However, the limited lodging options and lack of transportation infrastructure may pose challenges for some visitors. Despite these weaknesses, Hillcrest's many opportunities for growth and expansion make it a promising destination for future tourists.



Hillcrest Inn combines history with modern amenities

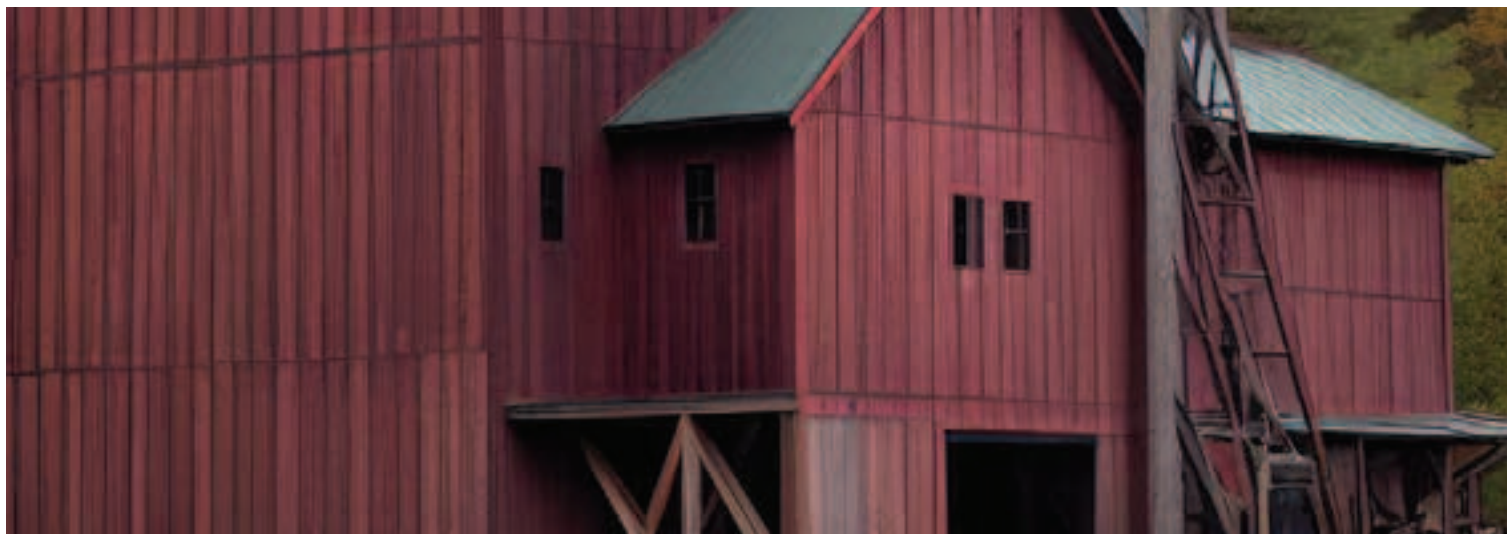
About Woodside

Woodside is a small village located in the southwest of Willow County, nestled in the rolling hills and forests of the region. Founded in the early 1800s by a group of settlers seeking a quiet and peaceful place to call home, Woodside has always been a tight-knit community with a strong sense of pride in its history and traditions. Despite its small size, the village has a rich and varied history, with a number of local landmarks and historical sites that attract visitors from all over the region. Some of the most popular attractions in Woodside include the old covered bridge that spans Willow Creek, the historic Woodside Mill, and the beautiful Woodside Park, which offers a peaceful respite from the hustle and bustle of the surrounding areas.

In the early 1800s, the town of Woodside in Willow County was founded around a small lumber mill situated on the banks of the Willow Creek. The mill was originally owned and operated by the Thompson family, who had immigrated to the area from New England in search of fertile land and ample timber resources. The mill quickly became an important hub of activity in the town, providing employment for many of the local residents and supplying lumber for the growing region. Over the years, the mill underwent several renovations and expansions as the demand for its products increased. Today, the historic Woodside mill is still standing and is considered a cornerstone of the community's rich history.

The historic Woodside Mill is a popular tourist attraction in the town of Woodside because of its rich history and beautiful architecture. The mill was originally built in the mid-1800s as a way to harness the power of Willow Creek to grind grain and saw lumber. Over the years, it has been restored and renovated to maintain its historic charm while also adding modern amenities and exhibits. Visitors come from all over to tour the mill, learn about its history, and see the inner workings of the machinery. Some visitors are interested in the history of the mill and how it helped shape the town of Woodside, while others come to see the beautiful architecture and take in the peaceful surroundings of Willow Creek.

The Woodside Mill is known for its production of high-quality, artisanal flours and grains. Visitors can see live demonstrations of the milling process, learning about the various types of grains and how they are milled into flour. The mill specializes in heirloom and heritage grains, such as spelt, einkorn, and emmer, and also produces a variety of other flours made from wheat, oats, corn, and other grains. Visitors can also purchase bags of freshly milled flour and grains to take home with them. In addition to its milling operations, the Woodside Mill also hosts educational workshops and events focused on the history and craft of milling, as well as the importance of supporting local and sustainable agriculture.



Historic Woodside Mill

List of Tourism Assets in Woodside

Woodside Mill Museum, showcasing the history of the lumber mill and the town

Woodside General Store, selling locally made crafts and gifts

Thompson's Diner, a family-owned restaurant serving classic American dishes

Woodside Inn, a historic bed and breakfast offering cozy accommodations

Woodside Antiques, a shop featuring antique furniture and vintage finds

Willow Creek Outfitters, a store offering outdoor gear and supplies for fishing and camping

Woodside Artisan Collective, a gallery and studio space showcasing local artists and their works

Timberland Trails, a hiking and nature trail company offering guided tours of the surrounding wilderness

Woodside Timber Company, a sustainable lumber operation using modern methods to preserve the environment.



Visitors can find local handmade goods and provisions at the Woodside General Store

Summary of Tourism Assets in Woodside

The tourism-related businesses in Woodside complement the town's history as a lumber mill center, and they contribute to its sense of place by preserving and showcasing its rich heritage. The historic Woodside mill, for example, is a major landmark in the town, and its preservation as an important part of the community's history helps to define the town's identity. The mill may also offer guided tours, exhibits, and educational programs to visitors, providing an immersive experience that brings the town's history to life.

Other businesses in Woodside, such as the local artisan shops, may also contribute to the town's sense of place by promoting and selling locally-made products that are unique to the area. By showcasing the skills and creativity of the town's residents, these businesses help to create a distinct and memorable identity for Woodside that sets it apart from other towns in the region.

The potential visitors who would travel to Woodside may be interested in history, architecture, and local products. They may be families, history buffs, or students who are interested in learning about the town's history and seeing firsthand how a small lumber mill grew into a thriving community. They may also be shoppers who are interested in locally-made crafts and artisan products. Overall, visitors to Woodside would be drawn to the town's unique character and rich history, and would be looking for an authentic and memorable experience that they cannot find elsewhere.



Thompson's Diner on Main Street

Woodside SWOT Analysis

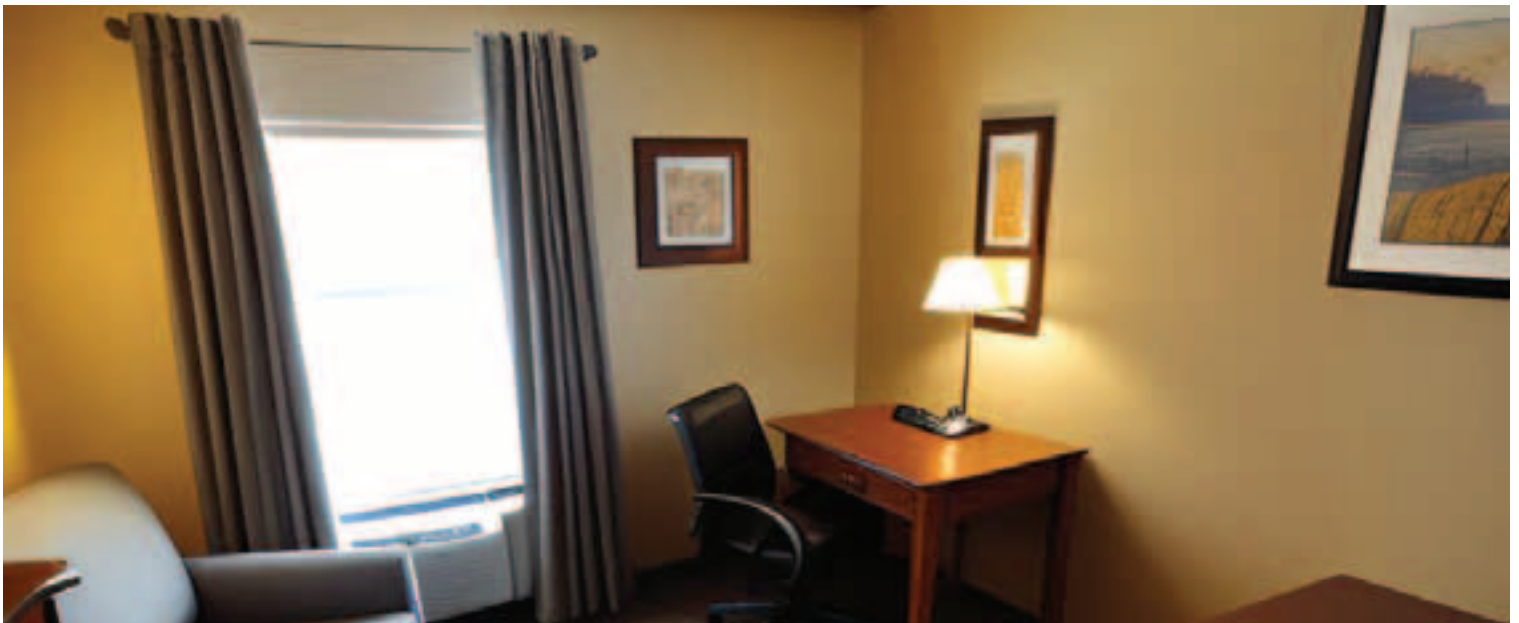
Woodside has a range of tourism assets that include lodging properties such as cabins and resorts, museums, outdoor activities, and a unique culinary scene. The town's strengths include its natural beauty, diverse outdoor activities, and a growing reputation as a foodie destination. Its weaknesses include limited public transportation options and the potential for over-tourism during peak seasons. However, there are opportunities to expand the town's marketing efforts to target new visitors and to offer more sustainable tourism experiences. Threats include natural disasters, such as forest fires, which could harm the town's natural beauty and impact its tourism industry.

One of Woodside's biggest strengths is its natural beauty. The town is located in a stunning mountainous area that offers plenty of opportunities for hiking, fishing, and skiing. This diverse range of outdoor activities is another significant strength for Woodside, attracting visitors from all over the country. Additionally, the town has a growing reputation as a foodie destination, with a variety of unique culinary experiences offered in locally-owned restaurants and cafes.

Despite its many strengths, Woodside has some weaknesses that impact its tourism industry. One of the primary concerns is the limited public transportation options, which can make it difficult for visitors to get around without a car. During peak tourism seasons, there is also the potential for over-tourism, which could lead to crowded trails and limited lodging options. Additionally, the town is susceptible to natural disasters such as forest fires, which could harm the natural beauty of the area and impact tourism.

However, there are several opportunities for Woodside to continue to grow and improve its tourism industry. The town could expand its marketing efforts to attract new visitors, particularly those interested in sustainable tourism experiences. It could also work with local businesses to offer more eco-friendly and sustainable options for visitors. Finally, Woodside could explore partnerships with nearby towns and attractions to create more comprehensive tourism packages.

One of the biggest threats to Woodside's tourism industry is natural disasters, such as forest fires or landslides, which could damage the town's natural beauty and impact outdoor activities. Other potential threats include the impact of climate change, which could alter the town's ecosystem and impact outdoor activities. Another threat is the potential for new lodging properties to be built that could impact the town's character and reputation as a small, unique destination.



Modern guest amenities at the historic Woodside Inn

Woodside Visitor Personas

History buffs: Visitors who are interested in the town's rich history, particularly its connection to the lumber industry and the Thompson family, may be drawn to Woodside to learn more about its past.

Nature lovers: Woodside's location along the Willow Creek and its surrounding natural beauty may attract visitors who enjoy outdoor activities such as hiking, fishing, or kayaking.

Architecture enthusiasts: The historic Woodside mill and other buildings in the town that date back to the 1800s may appeal to visitors who are interested in historic architecture.

Arts and crafts lovers: The local artisan shops and studios in Woodside may attract visitors who are interested in handmade, locally produced goods such as pottery, textiles, or woodwork.

Foodies: The local restaurants in Woodside that feature locally sourced ingredients may attract visitors who are interested in farm-to-table cuisine and supporting local agriculture.



History buffs and art enthusiasts can explore local treasures at Woodside Antiques

Woodside Economic Impact

The tourism-related businesses in Woodside have a significant economic impact on the local economy. These businesses generate revenue through sales and taxes, which in turn supports the local government and community. Sales tax is a major contributor to the local economy, with businesses such as the Woodside Craft Brewery, Hilltop Winery, and Woodside Emporium generating significant sales revenue. Accommodation taxes collected by businesses such as the Woodside Bed & Breakfast also contribute to the local economy.

The tourism-related businesses in Woodside also support local jobs and employment. From the Woodside Artisan Collective to Woodside Emporium, many of these businesses employ local residents and help boost the local economy. Additionally, the businesses create opportunities for entrepreneurship and innovation, as many of these businesses are locally owned and operated.

Furthermore, tourism-related businesses in Woodside contribute to the development of local infrastructure and quality of life projects. Admissions taxes collected by attractions such as the Woodside Botanical Gardens and Woodside Wildlife Refuge support the development and maintenance of parks, trails, and other recreational facilities that are enjoyed by residents and visitors alike. Hospitality taxes generated by restaurants such as the Woodside Grill also support the local government, including emergency services, public transportation, and other vital services.

However, the economic impact of tourism-related businesses in Woodside can also be a double-edged sword. While they create jobs and contribute to the local economy, they can also bring traffic congestion, noise pollution, and environmental impacts. In addition, the seasonal nature of many of these businesses can create uneven economic impacts, with spikes in activity during peak tourist seasons followed by lulls during the off-season.

Despite these challenges, the tourism-related businesses in Woodside are a vital component of the local economy and contribute significantly to the overall health and vitality of the community. As the area continues to grow and attract more visitors, it will be important to strike a balance between economic growth and preserving the natural beauty and charm of the area.



Visitors can gear up before exploring the local trails at Willow Creek Outfitters

Woodside Tourism Ecosystem

Tourism-related businesses in Woodside play a significant role in the overall tourism ecosystem of the region. They are key contributors to the generation of revenue through various forms of taxes. For example, sales tax is levied on purchases made by tourists, accommodations tax is collected on the fees paid by tourists for lodging, hospitality tax is imposed on restaurants, bars, and other hospitality establishments, and admissions tax is charged on entry fees to tourist attractions.

Woodside's attractions are also primary drivers of tourism to the area. Visitors are attracted to the area by the variety of tourist attractions, outdoor activities, and other experiences that are unique to Woodside. In addition, these businesses provide employment opportunities, which in turn contribute to the local economy by generating income and tax revenue.

Furthermore, the businesses in Woodside play a crucial role in promoting the destination through various marketing and advertising campaigns. They often collaborate with the local tourism board to create and promote packages, events and activities that target different segments of the tourism market. These collaborations help to raise the profile of the destination and attract more tourists, which in turn drives more business to the tourism-related businesses in the area.

Despite the contribution of these businesses to the tourism ecosystem, they also face some challenges. For example, competition from other destinations and the changing preferences of tourists can affect their business operations. Additionally, natural disasters and pandemics can significantly impact the number of visitors and their spending.

In terms of opportunities, Woodside's tourism-related businesses can leverage new technologies and trends to attract more tourists. For instance, the rise of ecotourism and sustainable travel has created opportunities for businesses to offer eco-friendly activities, accommodations, and tours. Furthermore, the use of social media and other digital marketing tools can help these businesses reach a wider audience and drive more visitors to the area.

Overall, the tourism-related businesses in Woodside are an important component of the local economy and contribute significantly to the region's tourism ecosystem. They help to drive revenue through taxes, employment, and promotion of the destination. Despite challenges, these businesses have opportunities to innovate and grow in response to changing consumer preferences and new technologies.



Woodside Artisan Collective offers classes and demonstrations to aspiring artists

Woodside Tourism Assets and Social Media

The tourism assets in Woodside can leverage social media to grow the regional tourism brand by increasing their online visibility, engagement and promotion of the destination. By actively engaging with potential visitors, sharing visually appealing content, and using targeted advertising, tourism businesses can reach a wider audience and attract more visitors to the area.

One of the primary benefits of social media is the ability to create and share engaging content that showcases the unique experiences and attractions in the destination. This content can include photos and videos of local events, attractions, and activities, as well as informative blog posts and articles that highlight the area's history, culture, and natural beauty. By sharing this content on social media platforms such as Facebook, Instagram, and Twitter, tourism businesses can generate interest and excitement among potential visitors, and encourage them to plan a trip to Woodside.

Another way that tourism assets in Woodside can leverage social media is by encouraging visitors to share their own experiences and photos online. This user-generated content can be a powerful marketing tool, as it provides authentic and compelling insights into the destination and its offerings. By creating hashtags, running contests, and actively encouraging visitors to share their experiences, tourism businesses can amplify their reach and encourage more people to visit.

In addition, social media can be used to connect with local influencers, bloggers, and other tourism partners, who can help to promote the area to their own audiences. By building relationships with these partners and collaborating on content and promotions, tourism businesses can tap into new audiences and increase their exposure within the destination.

Finally, social media can be used to gather feedback and insights from visitors, helping tourism businesses to understand the needs and preferences of their target audience. By monitoring social media conversations and engaging with visitors online, businesses can identify areas for improvement, address concerns and complaints, and ultimately enhance the visitor experience.

Overall, the tourism assets in Woodside can leverage social media to grow the regional tourism brand by creating and sharing engaging content, encouraging user-generated content, building partnerships with local influencers and tourism partners, and gathering insights and feedback from visitors. By leveraging social media in this way, Woodside can attract more visitors, drive economic growth, and enhance the overall tourism experience in the area.



Experience interactive and educational hiking tours by Timberland Trails

Woodside Closing Remarks

In conclusion, Woodside provides a variety of tourism assets that add significant value to the Willow County destination product. These assets, ranging from outdoor recreational activities to cultural and historical experiences, offer something for every type of traveler. The economic impact of these assets cannot be understated, with a strong focus on locally sourced products and the creation of jobs for the local community.

While the tourism assets in Woodside are strong, there are also areas for improvement. The limited accommodations options in the area may hinder the potential for extended stays and further economic growth. Additionally, the need for improved infrastructure to support visitors, such as increased parking and accessibility, must be addressed to ensure a positive experience for tourists.

Looking forward, there are several opportunities for further growth and development in Woodside's tourism industry. The development of new, unique experiences and attractions could draw in even more visitors, and the promotion of the area's natural beauty and history could attract new markets. Utilizing social media to showcase the best of what Woodside has to offer is also a powerful tool for building the regional tourism brand and increasing overall visitation.

Finally, it is important to recognize the potential threats that could impact the future of Woodside's tourism industry. Unfavorable weather patterns, political and economic instability, and changing consumer trends could all have a negative effect on the area's visitor numbers. However, by continuing to focus on the strengths and opportunities of Woodside's tourism assets, and by planning for potential threats, the area can continue to grow and thrive as a key contributor to the overall tourism product of Willow County.



Visitors can learn about sustainable forestry at Woodside Timber Company

Next Steps for Willow County

To fully utilize the tourism asset inventory in Willow County, the following steps should be taken.

Go-to-Market Strategy:

Improve Local Infrastructure - The county should invest in infrastructure improvements to attract more visitors. This includes improving the road network, enhancing public transportation, and providing better parking facilities to ease visitors' movements.

Establish a Brand Image - Willow County should develop a unique brand identity that communicates the area's tourism offerings, values, and personality. This will help in creating a positive perception of the destination in the minds of potential visitors.

Expand Tourism Offerings - The county should look at expanding the current tourism offerings to attract more visitors. This includes developing new attractions, events, and activities that cater to different types of visitors.

Foster Community Involvement - The local community should be involved in the development of the destination brand. This can be achieved by engaging residents in tourism-related projects, seeking their input, and encouraging them to participate in tourism initiatives.

Digital Destination Infrastructure Plan:

Develop a Tourism Website - Willow County should develop a tourism website that provides visitors with all the information they need to plan their trip. This should include information on attractions, accommodations, events, and other tourism-related offerings.

Establish a Social Media Presence - The county should establish a social media presence on major platforms like Facebook, Instagram, Twitter, and YouTube. This will help in engaging potential visitors, building a following, and promoting the destination.

Leverage Digital Marketing - Willow County should invest in digital marketing campaigns that target potential visitors. This includes paid search, display ads, social media ads, and email marketing.

Implement Digital Analytics - The county should implement digital analytics tools to measure the effectiveness of its marketing efforts. This will help in optimizing marketing campaigns and improving the overall tourism product.

In conclusion, the tourism asset inventory provides a roadmap for building the destination brand of Willow County. By implementing a go-to-market strategy and a digital destination infrastructure plan, the county can fully utilize its tourism assets to attract more visitors and grow the local economy. By fostering community involvement and leveraging digital technologies, Willow County can establish itself as a premier tourism destination in the region.