



G2 Grid Report Web CMS | 2019

Based solely on enterprise company reviews, see how dotCMS stacks up against Sitecore, Adobe AEM, and Bloomreach.





About This Report 03

Overall Ratings 04

Doing Business with dotCMS is Easy
dotCMS's Vision is Clear

Content Features 07

Marketer-friendly Content Authoring
Content Versioning Made Simple

Design Features 10

Customization Simplified

Platform Features 12

A CMS Built for Global Market Penetration
APIs and Integrations at dotCMS's Core

dotCMS Success Stories 15

"Powerful CMS for Complex Content"
"Powerful CMS with intuitive interface"
The LeBron James Foundation
White Castle

About dotCMS 17



About This Report

Based on customer reviews,

G2Crowd has compiled the average ratings for web content management systems into its 2019 G2 Grid*. In this report, we're going to compare four leading CMS vendors: dotCMS, Bloomreach, Adobe Experience Manager, and Sitecore Experience Platform.

In the following sections, we'll focus on four crucial areas of the G2Crowd review data:

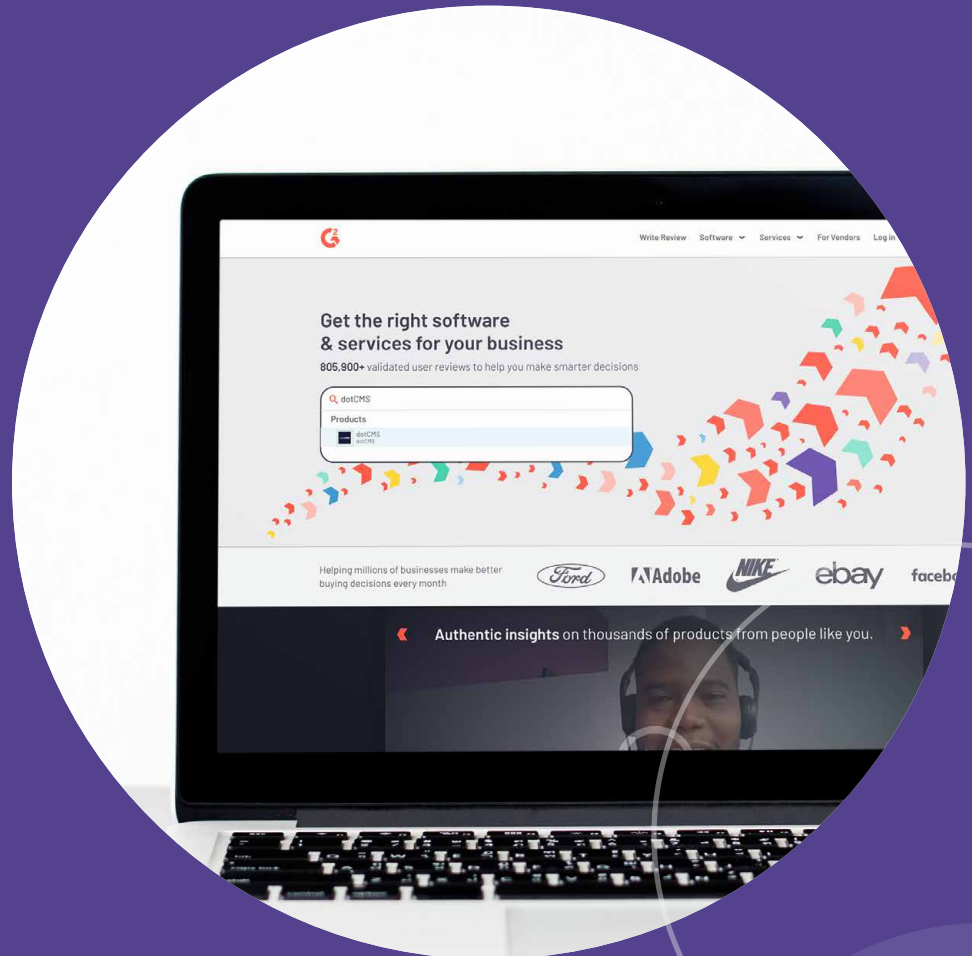
- 01. The overall CMS ratings** for areas like the ease of doing business with and product direction.
- 02. Ratings for content features** like content authoring and versioning.
- 03. Ratings for design features** like customization.
- 04. Ratings for platform features** like internationalization and API/integrations.



*G2 offers real-time data, and the numbers in this report are reflected as of May 23, 2019.

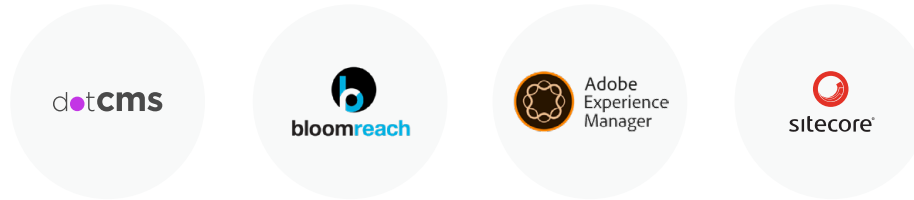


Overall Ratings





Overall Ratings



	dotcms	bloomreach	Adobe Experience Manager	sitecore
Meets Requirements	8.1	7.9	7.8	7.7
Ease of Use	8.0	6.8	7.0	6.3
Ease of Setup	8.4	5.8	6.3	5.0
Ease of Admin	7.8	6.8	6.2	6.7
Quality of Support	8.9	7.4	6.8	6.5
Ease of Doing Business With	8.7	6.2	7.1	6.5
Product Direction (% positive)	10	3.7	5.9	5.7



“dotCMS provides our team with excellent support and resources to ensure we’re able to deliver the best experience for our clients.”

Doing Business with dotCMS is Easy

dotCMS prides itself on maintaining excellent partnerships and client relationships. A review from an implementation partner stated, “dotCMS provides our team with excellent support and resources to ensure we’re able to deliver the best experience for our clients.” There are many options to choose from when it comes to dotCMS Professional Support.

dotCMS’s Vision is Clear

dotCMS strives to empower both marketers and developers with its hybrid headless CMS, which allows companies to **maximize their ROI by helping to manage, integrate, and deliver content across all touchpoints.** dotCMS also seeks to continue its journey towards building a NoCode experience for business users.



Content Features





Content Features



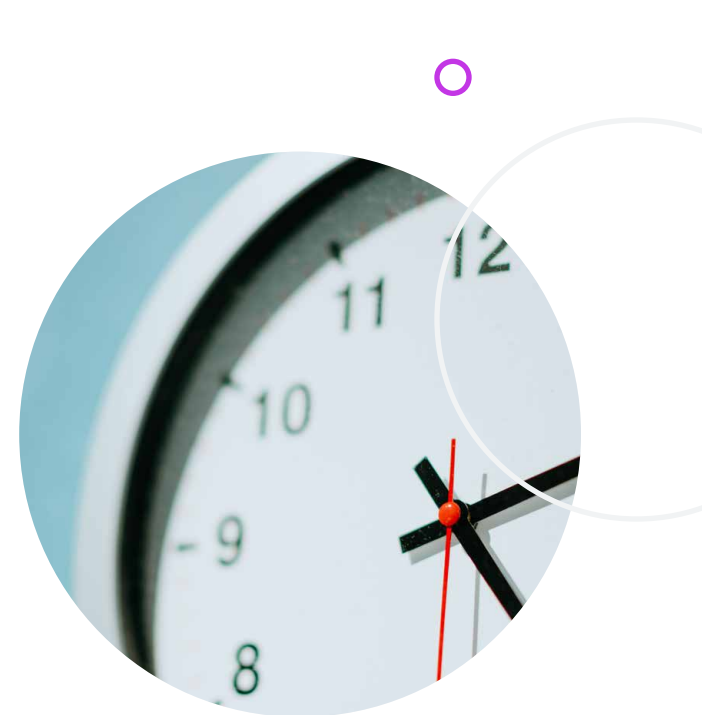
Content Authoring	8.4	7.5	8.0	7.8
Rich Text Editor	8.1	6.3	7.6	7.0
Versioning	8.2	7.8	7.3	7.0
Plug-ins/Widgets/Apps	7.7	6.2	7.5	6.1
Approval Process	7.6	7.8	7.3	7.0
Content Queue	7.6	7.2	7.2	7.0
Asset Management	8.1	7.8	7.3	6.9
Internal Search	7.7	6.5	6.8	6.2
Content Repository	8.6	N/A	7.5	7.1



Marketer-friendly Content Authoring

dotCMS empowers non-technical users with its **Edit Mode Anywhere feature**. Users can edit sites, SPAs, or any content-driven application directly within the CMS without relying on developers.

Marketers can create content, add pages, drag-and-drop layouts, preview for specific devices, and personalize content without a single line of code.

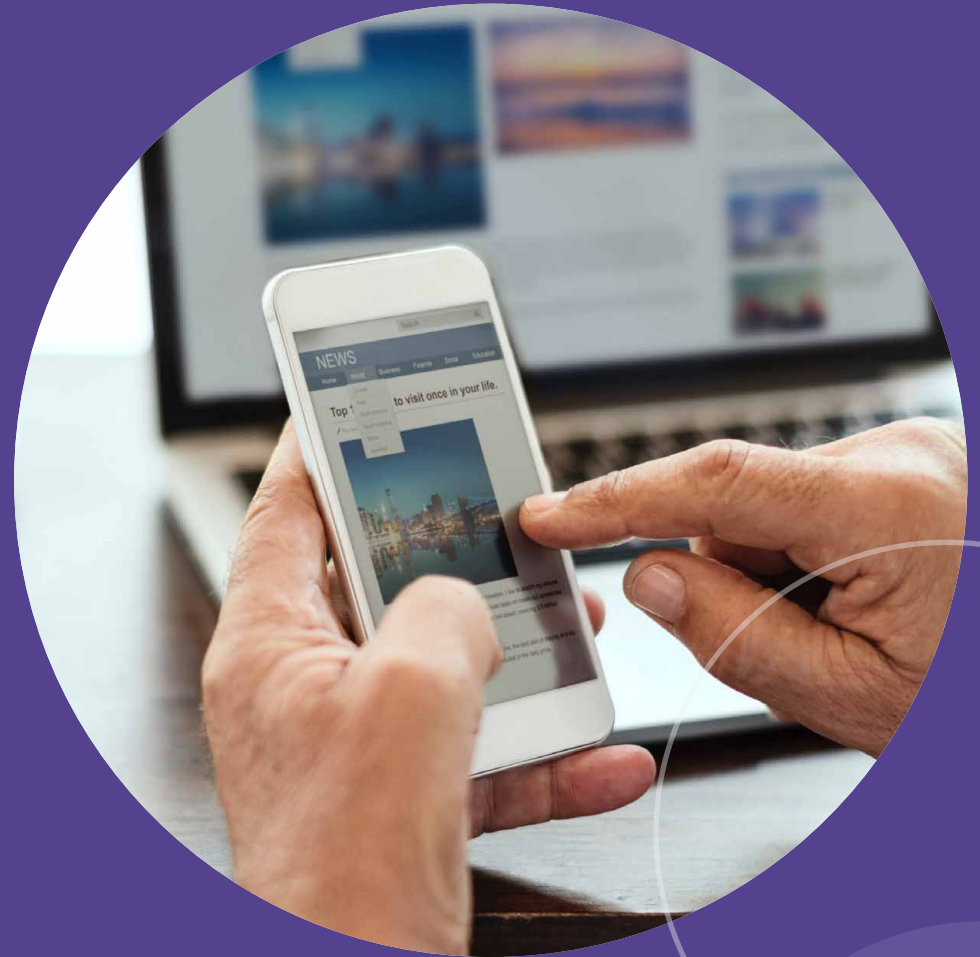


Content Versioning Made Simple

dotCMS offers the ability to view a snapshot of how a site looked historically or preview how it will look in the future with its **TimeMachine feature**. The tool is a simple, yet powerful way for enterprise companies to track content changes or restore previous versions.

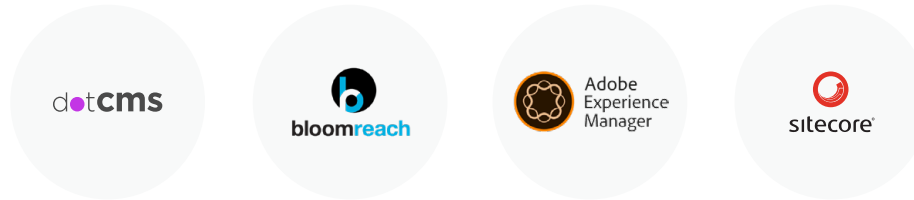


Design Features





Design Features



Breadth of Pre-Built Templates	5.2	4.5	6.2	5.5
Mobile	7.2	6.7	6.6	5.9
Branding/Themes	6.5	5.0	6.7	6.5
Customization	8.9	7.5	7.3	6.6

Customization Simplified

dotCMS is Java-based and leverages leading open-source J2EE technologies which are easily extendable by developers. Native support for Velocity allows less technical users to create templates

that integrate with Java code seamlessly. The CMS is also headless, meaning front-end developers have the freedom to choose whichever framework suits their needs.

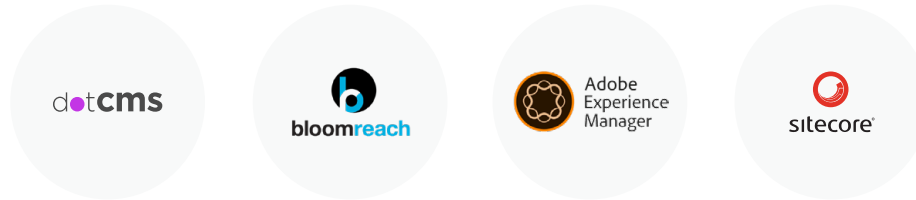


Platform Features





Platform Features



User Community	6.7	6.7	7.0	6.9
SEO	8.2	7.2	6.9	6.9
Flexible Navigation Structures	8.5	6.2	7.0	6.9
User, Role, & Access Management	8.0	6.9	7.4	7.9
Enterprise Scalability	8.1	8.1	7.9	7.8
Internationalization	8.1	6.0	7.6	7.6
Dashboards & Reports	6.1	6.3	7.0	7.0
API / Integrations	8.6	7.2	7.0	7.6



A CMS Built for Global Market Penetration

dotCMS makes building multilingual pages and content simple.

Marketers can create different versions of a site in various languages, or display localized content based on a viewer's location using out-of-the-box dotCMS features.

APIs and Integrations at dotCMS's Core

dotCMS supports RESTful APIs and GraphQL when it comes to headless content management. **APIs can also be used to extend dotCMS with MarTech and other third-party tools** that aren't already listed on the dotCMS marketplace—making it the perfect foundation for a best-of-breed digital experience solution.

And if that's not enough, the CMS allows less technical users to create endpoints using Velocity scripts. Requests can even be generated on the fly by frontend applications using the Scripting as a Service feature.



dotCMS Success Stories



“Powerful CMS for Complex Content”

“dotCMS brought our website down from thousands of separate files and pages into a well organized CMS that is much easier to manage. It also gave us the ability for other users within the company to add and edit content without having to go to the web team.”

Tad L.

[See Review>>](#)

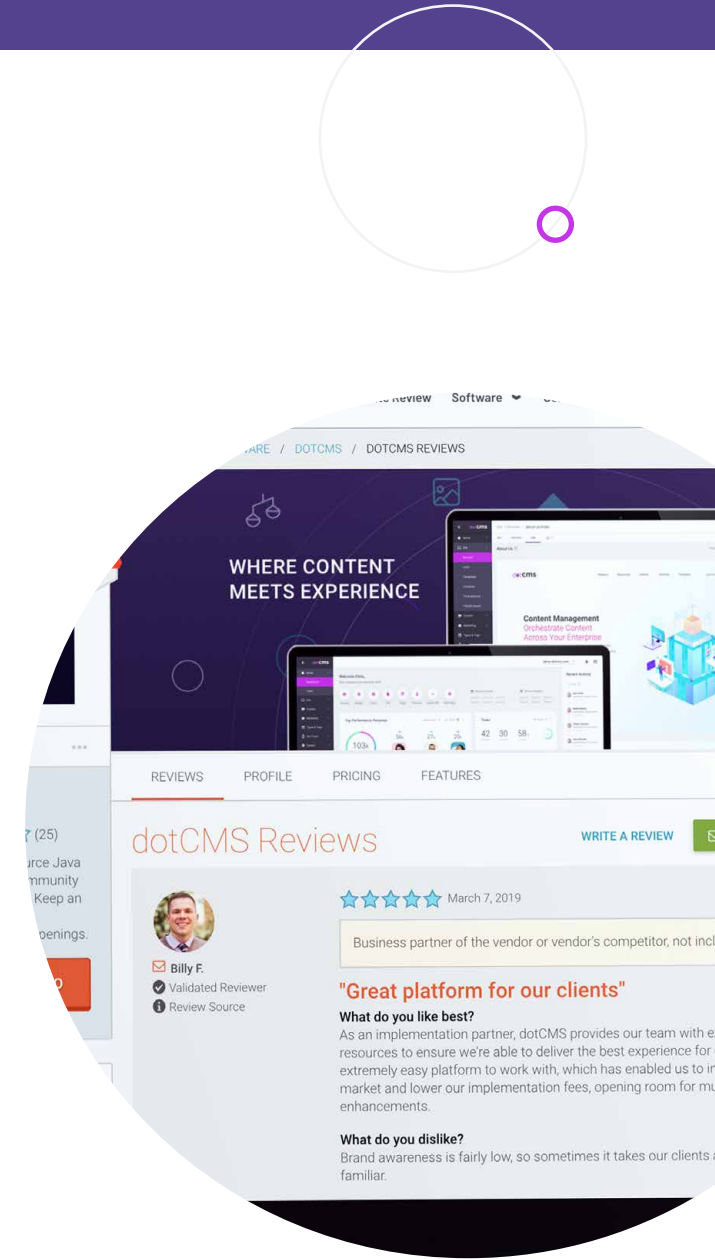


“Powerful CMS with intuitive interface”

“We can maintain a decentralized Web content maintenance model so that each expert area can update their own areas of the website with minimal training (no expertise in HTML or CSS required). It allows resources to be deployed more efficiently.”

Administrator

[See Review>>](#)





Based on customer reviews, dotCMS comes out on top for its content, design, and platform features, but who are some of these customers?



The LeBron James Foundation

The LeBron James Foundation
With the help of dotCMS partner Ethode, **the LeBron James Foundation was able to build a SPA in just three weeks.** The foundation achieved this tight deadline by leveraging the **NoCode philosophy** to develop, implement, test, and deliver the new application.



White Castle

In partnership with DYNAMIT, White Castle was able to use dotCMS to make a substantial digital leap towards engaging customers. **With personalization tools and content tagging, the company allows its followers, or 'Cravers', to customize the section on its website called The Crave.** Moving to dotCMS fueled digital experiences for White Castle's customers.



About dotCMS

dotCMS is a leading, open source content and customer experience management platform for companies that want innovation and performance driving their websites and other content-driven applications. Extensible and massively scalable, both small and large organizations can rapidly deliver personalized and engaging content across browsers, mobile devices, channels, second screens and endpoints -- all from a single system.

Founded in 2003, dotCMS is a privately owned US company with offices in Miami, Florida; Boston, Massachusetts and San Jose, Costa Rica. With a global network of certified development partners and an active open source community, dotCMS has generated more than a half-million downloads and thousands of implementations and integration projects worldwide. **Notable dotCMS customers include:** Telus, Standard & Poors, Hospital Corporation of America, Royal Bank of Canada, DirecTV, Thomson Reuters, China Mobile, Aon, and DriveTest Ontario.

Miami

3059 Grand Av.
Miami, FL, 33133
U.S.A

Boston

200 Portland St.
Boston, MA, 02114
U.S.A

Heredia, Costa Rica

Eurocenter
Primera Etapa, 2nd Floor
106 Heredia, Costa Rica

ON-DEMAND DEMO



dotcms.com



+1-305-900-2001



sales@dotcms.com