



UTV Sprayers • Pickup Sprayers • Tow Behind Sprayers  
Tractor Sprayers • Diesel & DEF Transfer Tanks • Fire Sprayers



# OUR VISION & STORY

## OUR VISION

To be a trusted resource for superior liquid management equipment when and where you need it.

## OUR STORY

Since 2003 we have been delivering high quality and reliable superior liquid management equipment like sprayers and refueling tanks to farmers, ranchers and landscape professionals. Our company has grown steadily based on the quality of our products and our determined pursuit of service excellence. Our commitment to research and development is combined with a willingness to listen to the people who everyday depend on our superior equipment. As a growing company, we continue to strive to help increase productivity in the agriculture and commercial industries by delivering products that are Engineered For Endurance™.

At Enduraplas, it makes us proud to watch local businesses thrive across the country. That's why Enduraplas products can be purchased from a local dealer near you.



# CONTENTS



- 4 UTV Sprayers ■
- 18 Pickup Sprayers ■
- 24 Tow Behind Sprayers ■
- 32 Tractor Sprayers ■
- 38 ATV Sprayers ■
- 40 Attachments ■
- 46 Sprayer Parts ■
- 50 Diesel Transfer Tanks ■
- 56 DEF Dispensers ■
- 62 Fire Control Sprayers ■

"We are proud that the Enduraplas® brand is viewed as premium and high quality in the markets we serve. We will continue to provide our customers with innovative products that are truly Engineered for Endurance™."

- Greg Firth, Managing Director

# UTV SPRAYERS

SPRAY EQUIPMENT

REFUELING EQUIPMENT

FIRE EQUIPMENT



UTV SPRAYER PERFORMANCE								
PAGE	7	8	9	12	14	15	16	17
PERFORMANCE	Field Boss™ 365	Field Boss™ XSTREAM	Field Boss™ ECOLITE	FIELD BOSS™ WASH	Spray Marshal™	Marshal Plus™	12 VOLT GOLD SERIES	12 VOLT PRO SERIES
Boom Spraying	★★★★★	★★★★★	★★★★★	☆☆☆☆☆	★★★★☆	★★★★☆	★★★★☆	★★★★★
Spot Spraying	★★★★☆	★★★★★	★★★★★	☆☆☆☆☆	★★★★★	★★★★★	★★★★★	★★★★★
High Pressure Spraying	☆☆☆☆☆	★★★★☆	★★★★☆	★★★★★	★★★★☆	★★★★☆	★★★★☆	★★★★☆
Fire Control Spraying	★★★☆☆	★★★★☆	★★★★☆	★★★★☆	★★★★☆	★★★★☆	★★★★☆	★★★★☆
Tree Spraying	☆☆☆☆☆	★★★★☆	★★★★☆	★★★★☆	★★★★☆	★★★★☆	★★★★☆	★★★★☆
High Volume Spraying	★★★★☆	★★★★☆	★★★★☆	☆☆☆☆☆	★★★★☆	★★★★☆	★★★★☆	★★★★☆

Featured Image : 60 Gallon Field Boss™ 365 with a 30' Steel Boom (SFB060FG225GH)

# UTV SPRAYER SPECS

	PRODUCT CODE	TANK SIZE (GAL)	DIMENSIONS (L X W X H)	MOTOR	PUMP	FLOW RATE (GPM)	PSI	HOSE LENGTH	SPRAY DISTANCE VERTICAL	SPRAY DISTANCE HORIZONTAL	DRY WEIGHT (LBS)	PRICE
FIELD BOSS™ 365 - PAGE 7												
1	SFB060FG225GH	60	48" x 38" x 23"	GX120 Honda/4 HP	Centrifugal	22.5	50	50'	27'	35'	185	\$2,295.00
2	SFB100FG225GH	100	48" x 45" x 27"	GX120 Honda/4 HP	Centrifugal	22.5	50	50'	27'	35'	200	\$2,395.00
FIELD BOSS™ XSTREAM - PAGE 8												
3	SFB060FG290EX	60	48" x 38" x 23"	GX120 Honda/4 HP	Diaphragm	5.8	290	100'	37'	45'	185	\$2,695.00
4	SFB100FG290EX	100	48" x 45" x 27"	GX120 Honda/4 HP	Diaphragm	5.8	290	100'	37'	45'	200	\$2,795.00
FIELD BOSS™ ECOLITE - PAGE 9												
5	SFB060FG712V	60	48" x 38" x 23"	12 Volt	Diaphragm	7	70	50'	27'	35'	180	\$1,950.00
6	SFB100FG712V	100	48" x 45" x 27"	12 Volt	Diaphragm	7	70	50'	27'	35'	195	\$2,050.00
FIELD BOSS™ WASH - PAGE 12												
7	SFBW060FG3025GH	60	48" x 38" x 23"	GX200 Honda/6 HP	Piston	2.5	3000	50'	-	-	190	\$2,845.00
8	SFBW100FG3025GH	100	48" x 45" x 27"	GX200 Honda/6 HP	Piston	2.5	3000	50'	-	-	205	\$2,945.00
SPRAY MARSHAL™ - PAGE 14												
9	SM025FG3GH	25	40" x 20" x 36"	GX35 Honda/1.3 HP	Piston	2.9	290	100'	22'	30'	110	\$1,395.00
10	SM055FG3GH	55	42" x 26" x 38"	GX35 Honda/1.3 HP	Piston	2.9	290	100'	22'	30'	120	\$1,495.00
11	SM075FG3GH	75	39" x 32" x 44"	GX35 Honda/1.3 HP	Piston	2.9	290	100'	22'	30'	160	\$1,695.00
12	SM100FG3GH	100	51" x 36" x 44"	GX35 Honda/1.3 HP	Piston	2.9	290	100'	22'	30'	170	\$1,745.00
MARSHAL PLUS™ - PAGE 15												
13	SM060AFG3GH	60	36" x 30" x 27"	GX35 Honda/1.3 HP	Piston	2.9	290	100'	22'	30'	100	\$1,495.00
12 VOLT GOLD SERIES - PAGE 16												
14	SS025FG212V	25	41" x 20" x 21"	12 Volt	Diaphragm	2	60	15'	27'	35'	65	\$655.00
15	SS055FG212V	55	44" x 27" x 25"	12 Volt	Diaphragm	2	60	15'	27'	35'	85	\$695.00
16	SS075FG212V	75	39" x 32" x 28"	12 Volt	Diaphragm	2	60	15'	27'	35'	115	\$795.00
17	SS100FG212V	100	51" x 36" x 29"	12 Volt	Diaphragm	2	60	15'	27'	35'	125	\$895.00
12 VOLT PRO SERIES - PAGE 17												
18	SSP025FG412V60	25	41" x 20" x 21"	12 Volt	Diaphragm	4	60	15'	27'	35'	75	\$1,250.00
19	SSP055FG412V60	55	44" x 27" x 25"	12 Volt	Diaphragm	4	60	15'	27'	35'	95	\$1,295.00
20	SSP075FG412V60	75	39" x 32" x 28"	12 Volt	Diaphragm	4	60	15'	27'	35'	125	\$1,395.00
21	SSP100FG412V60	100	51" x 36" x 29"	12 Volt	Diaphragm	4	60	15'	27'	35'	135	\$1,495.00

\*Warranty must be registered to activate your 10 year tank warranty. See page 71 for details.



- Easily add it to any Field Boss™ sprayer
- Ideal for unexpected chemical spills

## FRESH WATER TANK

Product Code	ASFBFWKIT
Price	\$129.00
Capacity	3 Gallons

# 2018 FIELD BOSS™ IMPROVEMENTS



## Quick connections for boom attachments

To connect a boom, you can now just wind off a cap and wind on the boom hose.



## Attach & adjust spray booms in seconds

No more messing with nuts and bolts. Just slide your boom on and set the height.



## Shut your hose reel pressure off

Prevent your hose filling up with chemical when your not using your hand wand.



## New automatic shut-off filter

You can now clean the filter at any time without having to empty the tank.

## IN-CAB CONTROLS

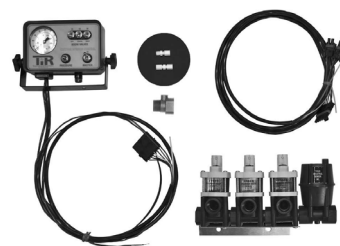
Increase/Decrease Spraying Pressure

Master on/off Switch

Monitor Spraying Pressure

Select Left, Right or Center Boom Section

- Ideal for crew cab UTV's
- Perfect for UTV's with an air conditioned or heated cabs



### ADD 'FBES' TO CODE

Price	(Upgrade) \$445.00
Includes	3 x Solenoids, Control Box with Pressure Regulator & Wiring Harness



# FIELD BOSS™ 365



Poly Boom	Pg 42
Steel Boom	Pg 43
Boomless Nozzle	Pg 44
Versatile Boom	Pg 44



The Field Boss™ 365 is designed to be used all year round. This UTV sprayer can be utilized for spraying in the spring summer and fall. In winter, it works perfect for a salt brine de-icing solution.

Featured Image (Above): 60 Gallon Field Boss™ 365 with a 20' Steel Boom (SFB060FG225GH)

## PERFORMANCE

- Boom Spraying ★★★★★
- Spot Spraying ★★★★★
- High Pressure Spraying ★★★★★
- Fire Control Spraying ★★★★★
- Tree Spraying ★★★★★
- High Volume Spraying ★★★★★



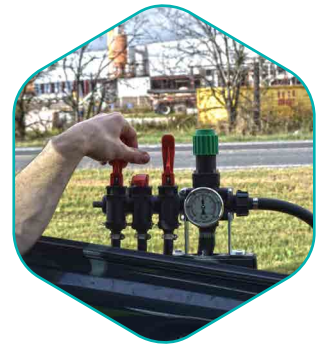
**New design 100% drain-able tank**

Easily clean your tank to avoid mixing chemical when spraying.



**New Feature, Monitor your liquid level**

The built in sight glass kit allows you to view your liquid level from your seat.



**Control your boom from your seat**

The spring loaded control arm allows you to manage your boom options.



### SFB060FG225GH

Price	\$2,295.00
Capacity	60 Gallons
Specs	Page 5, Row 1



### SFB100FG225GH

Price	\$2,395.00
Capacity	100 Gallons
Specs	Page 5, Row 2

SPRAY EQUIPMENT

REFUELING EQUIPMENT

FIRE EQUIPMENT



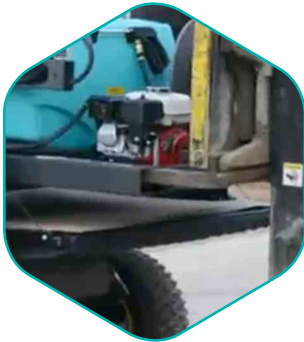
# FIELD BOSS™ XSTREAM



Poly Boom	Pg 42
Steel Boom	Pg 43
Boomless Nozzle	Pg 44
Versatile Boom	Pg 44

The Field Boss™ Xstream didn't get it's name for nothing. With a high pressure pump, this UTV sprayer is perfect for spraying trees or other applications that don't require high flow.

Featured Image (Above): 100 Gallon Field Boss™ XStream with a 30' Poly Boom (SFB100FG290EX)



**Easily load and unload your sprayer**

Each Field Boss™ comes with integrated fork points for loading and unloading.



**Low profile tank for extra stability**

Keep your liquid close to the ground to keep your center of gravity low.



**Heavy duty 100% poly hose reel**

Easy to wind, this hose reel is constructed to withstand many years of rugged use.

## PERFORMANCE

- Boom Spraying ★★★★★
- Spot Spraying ★★★★★
- High Pressure Spraying ★★★★★
- Fire Control Spraying ★★★★★
- Tree Spraying ★★★★★
- High Volume Spraying ★★★★★



### SFB060FG290EX

Price	\$2,695.00
Capacity	60 Gallons
Specs	Page 5, Row 3



### SFB100FG290EX

Price	\$2,795.00
Capacity	100 Gallons
Specs	Page 5, Row 4

SPRAY EQUIPMENT

REFUELING EQUIPMENT

FIRE EQUIPMENT



# FIELD BOSS™ ECOLITE



Poly Boom	Pg 42
Steel Boom	Pg 43
Boomless Nozzle	Pg 44
Versatile Boom	Pg 44



The Field Boss™ EcoLite is a high performance UTV sprayer with a 12 volt electric pump. This model gives you the ability to turn your pump on and off directly from your seat.

Featured Image (Above): 60 Gallon Field Boss™ EcoLite with a 13' Poly Boom & 30' Boomless Nozzle Kit (SFB060FG712V)

## PERFORMANCE

- Boom Spraying ★★★★★
- Spot Spraying ★★★★★
- High Pressure Spraying ★★★★★
- Fire Control Spraying ★★★★★
- Tree Spraying ★★★★★
- High Volume Spraying ★★★★★



Control your pump from your seat

Switch your pump off when it is not in use to reduce wearing.



Attach any Enduraplas boom in minutes

You have boom spraying in mind, we have a quick and easy solution.



12 volt pump performance

If your looking for a quiet, efficient pump option, this is your answer.



SFB060FG712V

Price	\$1,950.00
Capacity	60 Gallons
Specs	Page 5, Row 5



SFB100FG712V

Price	\$2,050.00
Capacity	100 Gallons
Specs	Page 5, Row 6

SPRAY EQUIPMENT

REFUELING EQUIPMENT

FIRE EQUIPMENT



SPRAY EQUIPMENT

REFUELING EQUIPMENT

FIRE EQUIPMENT





SPRAY EQUIPMENT

REFUELING EQUIPMENT

FIRE EQUIPMENT



# FIELD BOSS™ WASH



The Field Boss™ Wash is a powerful gas powered pressure washer that is built to fit in a UTV bed. This cold water pressure washer comes with a built in soap injector to give you all the washing options you need.

Featured Image (Above): 100 Gallon Field Boss™ Wash (SFBW100FG3025GH)



**Easily load and unload your pressure washer**

With integrated fork points, there is no need to waste time loading or unloading.



**Complete with a built-in soap tank**

Make cleaning more effective with the attached soap injector system.



**Heavy duty pressure washer gun**

Minimize any failure when you are in the field or on site.

## PERFORMANCE

- Boom Spraying ★★★★★
- Spot Spraying ★★★★★
- High Pressure Spraying ★★★★★
- Fire Control Spraying ★★★★★
- Tree Spraying ★★★★★
- High Volume Spraying ★★★★★



### SFBW060FG3025GH

Price	\$2,845.00
Capacity	60 Gallons
Specs	Page 5, Row 7



### SFBW100FG3025GH

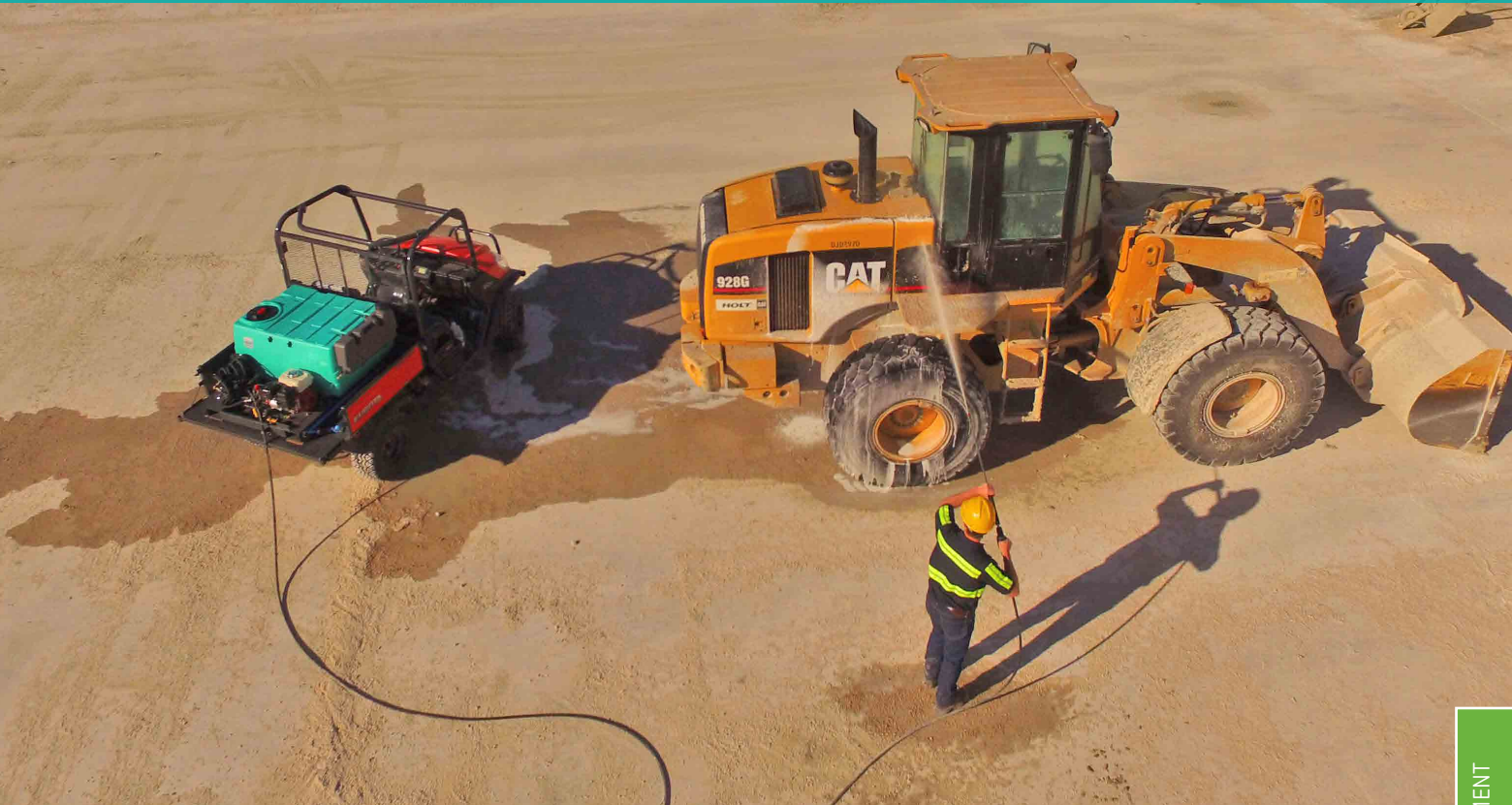
Price	\$2,945.00
Capacity	100 Gallons
Specs	Page 5, Row 8

SPRAY EQUIPMENT

REFUELING EQUIPMENT

FIRE EQUIPMENT

Featured Image: 100 Gallon Field Boss™ Wash (SFBW100FG3025GH)



Featured Image: 100 Gallon Field Boss™ Wash (SFBW100FG3025GH)

SPRAY EQUIPMENT

REFUELING EQUIPMENT

FIRE EQUIPMENT



# SPRAY MARSHAL™



Poly Boom	Pg 42
Steel Boom	Pg 43
Boomless Nozzle	Pg 44
Versatile Boom	Pg 44
Receiver Hitch	Pg 44

The Spray Marshal™ range is an ideal spray unit for a large range of spraying applications. This includes city landscapers maintaining gardens to small farm spot spraying.

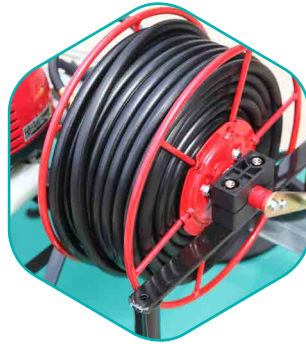
Featured Image (Above): 55 Gallon Spray Marshal™ (SM055FG3GH)

SPRAY EQUIPMENT



100% Honda® powered, reliable performance

This GX35 Engine is powered with 1.3 horse power and a 290 PSI pump.



100' of hose for extra reach

Spray in areas you can't drive with a heavy duty high pressure hose.



Atomizing spray gun for spraying patterns

Enjoy the experience of a range of spraying patterns from jet stream to mist.

## PERFORMANCE

- Boom Spraying ★★★★★
- Spot Spraying ★★★★★
- High Pressure Spraying ★★★★★
- Fire Control Spraying ★★★★★
- Tree Spraying ★★★★★
- High Volume Spraying ★★★★★

REFUELING EQUIPMENT



FIRE EQUIPMENT

	SM025FG3GH	SM055FG3GH	SM075FG3GH	SM100FG3GH
Price	\$1,395.00	\$1,495.00	\$1,695.00	\$1,745.00
Capacity	25 Gallons	55 Gallons	75 Gallons	100 Gallons
Specs	Page 5, Row 9	Page 5, Row 10	Page 5, Row 11	Page 5, Row 12

290 PSI 2.9 GPM

USA

# MARSHAL PLUS™



- Poly Boom Pg 42

---

- Steel Boom Pg 43

---

- Boomless Nozzle Pg 44

---

- Versatile Boom Pg 44

---

- Receiver Hitch Pg 44



The Marshal Plus™ is designed for a farmer, rancher or contract worker that takes pride in a quality, reliable product. This sprayer can be used for, spraying weeds, boom spraying, fence line spraying and more.

Featured Image (Above): 60 Gallon Marshal Plus™ (SM060AFG3GH)

## PERFORMANCE

- Boom Spraying ★★★★★
- Spot Spraying ★★★★★
- High Pressure Spraying ★★★★★
- Fire Control Spraying ★★★★★
- Tree Spraying ★★★★★
- High Volume Spraying ★★★★★



### Genuine GX Series Honda® engine

Easy to start. This engine is a reliable solution that won't let you down on site.



### Space saving compact design

Fits perfect in the back of your UTV with room to spare.



### Atomizing spray gun for spraying patterns

Enjoy the experience of a range of spraying patterns from jet stream to mist.



### SM060AFG3GH

Price	\$1,495.00
Capacity	60 Gallons
Specs	Page 5, Row 13

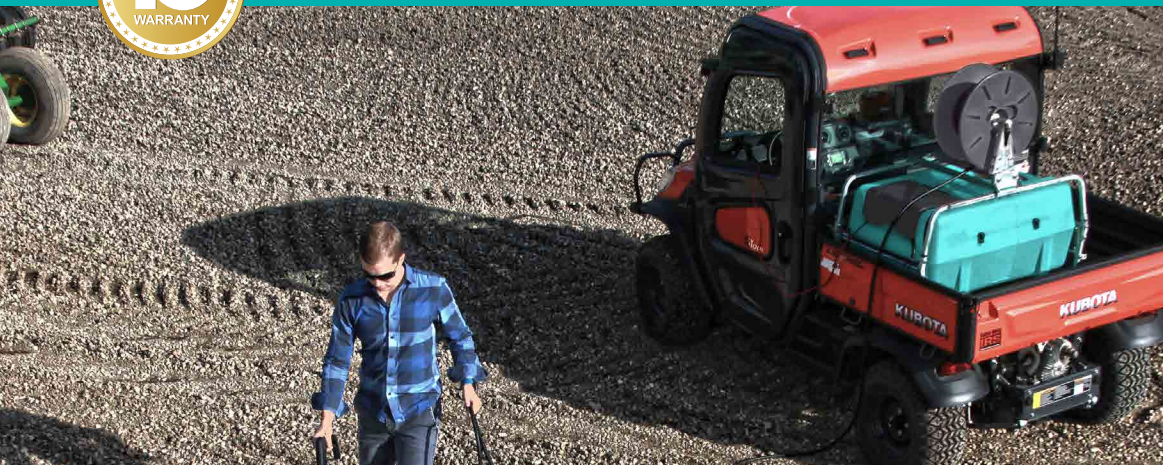
SPRAY EQUIPMENT

REFUELING EQUIPMENT

FIRE EQUIPMENT



# 12 VOLT GOLD SERIES



Poly Boom	Pg 42
Steel Boom	Pg 43
Boomless Nozzle	Pg 44
Versatile Boom	Pg 44
Receiver Hitch	Pg 44
Hose Reel	Pg 45

The 12 volt Gold Series sprayer family comes with a 2 GPM pump. Because of its user friendly features, this UTV sprayer has been popular for weed and spot spraying. Especially with an attached poly hose reel.

Featured Image (Above): 55 Gallon GOLD Series Sprayer with a 50' poly hose reel (SSR055FG212V)



**Easily add 100' of hose**

Get to areas you can't drive with 100' of hose neatly stored on a poly hose reel.



**Completely drain your spraying chemical**

With the built-in sump drain, be sure you don't mix your chemicals.



**Pump and regulator protected**

The built-in pump cover ensures your components are safe.

## PERFORMANCE

- Boom Spraying ★★★★★
- Spot Spraying ★★★★★
- High Pressure Spraying ★★★★★
- Fire Control Spraying ★★★★★
- Tree Spraying ★★★★★
- High Volume Spraying ★★★★★



SSR025FG212V		SSR055FG212V		SSR075FG212V		SSR100FG212V	
SS025FG212V	\$655.00	SS055FG212V	\$695.00	SS075FG212V	\$795.00	SS100FG212V	\$895.00
SSR025FG212V	\$995.00	SSR055FG212V	\$1,095.00	SSR075FG212V	\$1,145.00	SSR100FG212V	\$1,295.00
Capacity	25 Gallons	Capacity	55 Gallons	Capacity	75 Gallons	Capacity	100 Gallons
Specs	Page 5, Row 14	Specs	Page 5, Row 15	Specs	Page 5, Row 16	Specs	Page 5, Row 17

SPRAY EQUIPMENT

REFUELING EQUIPMENT

FIRE EQUIPMENT



# 12 VOLT PRO SERIES



Poly Boom	Pg 42
Steel Boom	Pg 43
Boomless Nozzle	Pg 44
Versatile Boom	Pg 44
Receiver Hitch	Pg 44
Hose Reel	Pg 45

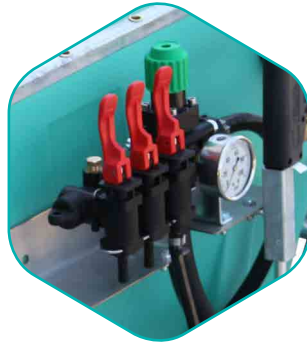


The 12 volt Pro Series sprayers are among the most popular UTV sprayers. Our customers say this is because they come standard with a 4 GPM pump and a boomless nozzle for amazing acreage spraying.

Featured Image (Above): 55 Gallon PRO Series Sprayer (SSP055FG412V60)

## PERFORMANCE

- Boom Spraying ★★★★★
- Spot Spraying ★★★★★
- High Pressure Spraying ★★★★★
- Fire Control Spraying ★★★★★
- Tree Spraying ★★★★★
- High Volume Spraying ★★★★★



**Control your spraying pressure**

With a 3 way regulator and gauge, its time to control your sprayer from one spot.



**Drain your chemicals to the last drop**

Completely clean your tank to avoid mixing 2 different spraying chemicals.



**30' boomless nozzle included**

Make acreage spraying easy while being able to drive in rough terrain.



SSP025FG412V60		SSP055FG412V60		SSP075FG412V60		SSP100FG412V60	
SSP025FG412V60	\$1,250.00	SSP055FG412V60	\$1,295.00	SSP075FG412V60	\$1,395.00	SSP100FG412V60	\$1,495.00
SSP025FG412V61	\$1,535.00	SSP055FG412V61	\$1,635.00	SSP075FG412V61	\$1,735.00	SSP100FG412V61	\$1,835.00
Capacity	25 Gallons	Capacity	55 Gallons	Capacity	75 Gallons	Capacity	100 Gallons
Specs	Page 5, Row 18	Specs	Page 5, Row 19	Specs	Page 5, Row 20	Specs	Page 5, Row 21

USA



\*Product codes that end with '61' come standard with a 100' of hose on a Poly Hose Reel.

Enduraplas.com

# PICKUP SPRAYERS



SPRAY EQUIPMENT

REFUELING EQUIPMENT

FIRE EQUIPMENT

## PICKUP SPRAYER PERFORMANCE

PAGE	20 - 22	23
PERFORMANCE	PRO MASTER™ 580/580E	PRO MASTER™ 725
Boom Spraying	★★★★☆	★★★☆☆
Spot Spraying	★★★★★	★★★★☆☆
High Pressure Spraying	★★★★☆	★★★★★
Fire Control Spraying	★★★★☆☆	★★★★☆☆
Tree Spraying	★★★★☆	★★★★★
High Volume Spraying	★★★★☆	★★★★☆☆

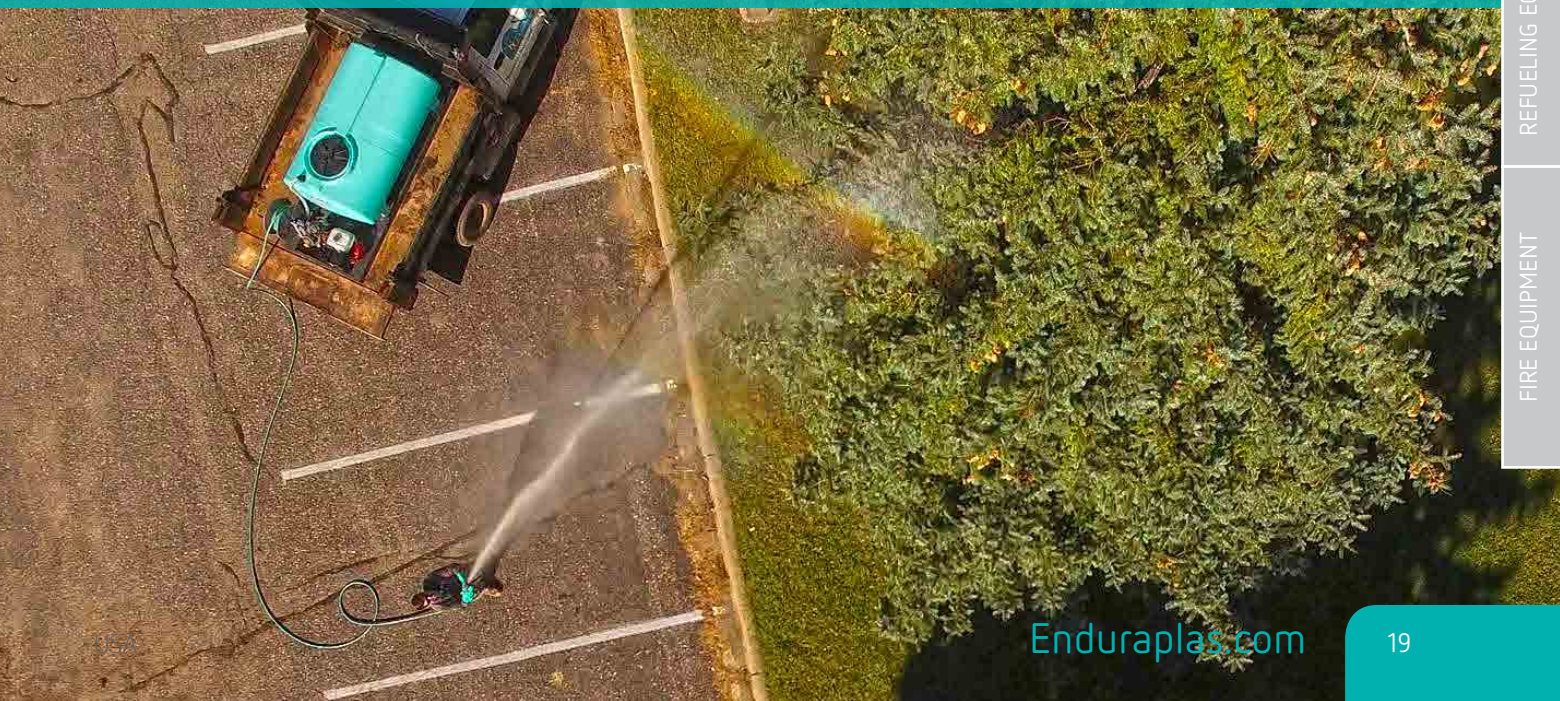
Featured Image: 250 Gallon Pro Master™ 580E (SPM250FG580E)

# PICKUP SPRAYER SPECS

	PRODUCT CODE	TANK SIZE (GAL)	DIMENSIONS (L X W X H)	MOTOR	PUMP	FLOW RATE (GPM)	PSI	HOSE REEL TYPE	HOSE LENGTH	SPRAY DISTANCE VERTICAL	SPRAY DISTANCE HORIZONTAL	DRY WEIGHT (LBS)	PRICE
<b>PRO MASTER™ 580 - PAGE 20</b>													
1	SPM200FG580	200	80" x 47" x 33"	GX200 Honda/6.5 HP	Diaphragm	9.6	580	Manual	100'	42'	35'	458	\$4,345.00
2	SPM250FG580	250	80" x 47" x 38"	GX200 Honda/6.5 HP	Diaphragm	9.6	580	Manual	100'	42'	35'	473	\$4,445.00
3	SPM300FG580	300	102" x 46" x 36"	GX200 Honda/6.5 HP	Diaphragm	9.6	580	Manual	100'	42'	35'	586	\$4,595.00
4	SPM400FG580	400	102" x 46" x 45"	GX200 Honda/6.5 HP	Diaphragm	9.6	580	Manual	100'	42'	35'	616	\$4,695.00
<b>PRO MASTER™ 580E - PAGE 22</b>													
5	SPM100FG580E	100	48" x 45" x 38"	GX200 Honda/6.5 HP	Diaphragm	9.6	580	Electric	300	42'	35'	325	\$5,595.00
6	SPM200FG580E	200	80" x 47" x 38"	GX200 Honda/6.5 HP	Diaphragm	9.6	580	Electric	300	42'	35'	583	\$6,095.00
7	SPM250FG580E	250	80" x 47" x 38"	GX200 Honda/6.5 HP	Diaphragm	9.6	580	Electric	300	42'	35'	598	\$6,145.00
8	SPM300FG580E	300	102" x 46" x 38"	GX200 Honda/6.5 HP	Diaphragm	9.6	580	Electric	300	42'	35'	711	\$6,395.00
9	SPM400FG580E	400	102" x 46" x 45"	GX200 Honda/6.5 HP	Diaphragm	9.6	580	Electric	300	42'	35'	741	\$6,495.00
<b>PRO MASTER™ 725 - PAGE 23</b>													
10	SPM200FG725	200	80" x 47" x 33"	GX390 Honda/13 HP	Diaphragm	18	725	Manual	100'	50'	55'	458	\$5,945.00
11	SPM250FG725	250	80" x 47" x 38"	GX390 Honda/13 HP	Diaphragm	18	725	Manual	100'	50'	55'	473	\$5,995.00
12	SPM300FG725	300	102" x 46" x 36"	GX390 Honda/13 HP	Diaphragm	18	725	Manual	100'	50'	55'	586	\$6,145.00
13	SPM400FG725	400	102" x 46" x 45"	GX390 Honda/13 HP	Diaphragm	18	725	Manual	100'	50'	55'	616	\$6,195.00

\*Warranty must be registered to activate your 10 year tank warranty. See page 71 for details.

Featured Image: 300 Gallon Pro Master™ 580 (SPM300FG580)





# PRO MASTER™ 580



The Pro Master™ 580 is ideal for small and large landscape companies that are looking for a quicker and more cost effective way to maintain city sidewalks and landscape.

Featured Image (Above): 300 Gallon Pro Master™ 580 (SPM300FG580)

SPRAY EQUIPMENT

REFUELING EQUIPMENT

FIRE EQUIPMENT



**Load and unload much faster**

Built-in fork points make it easier to maneuver without being awkward.



**Trusty Honda® performance**

On the job, the last thing you want to break down is the engine.



**Keep your spray lines clean**

You can now clean your filter without having to empty the tank.



**100% poly, crack-free hose reel**

Easy to wind and extremely durable, this hose reel won't crack or bend.

**NEW**



SPM200FG580

**NEW**



SPM250FG580

**NEW**



SPM300FG580

**NEW**



SPM400FG580

Price	\$4,345.00
Capacity	200 Gallons
Specs	Page 19, Row 1

Price	\$4,445.00
Capacity	250 Gallons
Specs	Page 19, Row 2

Price	\$4,595.00
Capacity	300 Gallons
Specs	Page 19, Row 3

Price	\$4,695.00
Capacity	400 Gallons
Specs	Page 19, Row 4

**BUILT IN  
USA**



SPRAY EQUIPMENT

REFUELING EQUIPMENT

FIRE EQUIPMENT



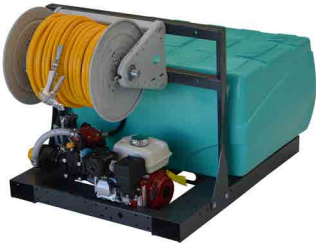
# PRO MASTER™ 580E



The Pro Master™ 580E features a smart electric reel to help you wind and unwind faster than ever. Complete your spraying jobs in less time with this premium skid sprayer.

Featured Image (Above): 250 Gallon Pro Master™ 580E (SPM250FG580E)

**NEW**



**SPM100FG580E**

Price	\$5,595.00
Capacity	100 Gallons
Specs	Page 19, Row 5



**Load and unload much faster**

Built-in fork points make it easier to maneuver without being awkward.



**User-friendly, time saving electric reel**

Quickly rewind the hose back into position with the press of a button.



**High performance pump**

Driven by a Honda® engine, enjoy pressure and volume for a range of popular tasks.

**NEW**



**SPM200FG580E**

Price	\$6,095.00
Capacity	200 Gallons
Specs	Page 19, Row 6

**NEW**



**SPM250FG580E**

Price	\$6,145.00
Capacity	250 Gallons
Specs	Page 19, Row 7

**NEW**



**SPM300FG580E**

Price	\$6,395.00
Capacity	300 Gallons
Specs	Page 19, Row 8

**NEW**



**SPM400FG580E**

Price	\$6,495.00
Capacity	400 Gallons
Specs	Page 19, Row 9

SPRAY EQUIPMENT

REFUELING EQUIPMENT

FIRE EQUIPMENT

# PRO MASTER™ 725



With the most pressure and volume of the Pro Master™ family, this skid sprayer is built with power. Perfect for spraying tall trees and shrubs, the Pro Master™ 725 will allow you to reach new heights.

Featured Image (Above): 300 Gallon Pro Master™ 725 (SPM300FG725)



**Load and unload much faster**

Built-in fork points make it easier to maneuver without being awkward.



**100% poly, crack-free hose reel**

Easy to wind and extremely durable, this hose reel won't crack or bend.



**Reach the top of tall trees**

With a high pressure mist/jet gun, taking care of trees is easy.



**4 x Built-in tie down points**

Secure the unit quickly and safely with purposed built tie down points.

**NEW**



**NEW**



**NEW**



**NEW**



SPM200FG725

Price	\$5,945.00
Capacity	200 Gallons
Specs	Page 19, Row 10

SPM250FG725

Price	\$5,995.00
Capacity	250 Gallons
Specs	Page 19, Row 11

SPM300FG725

Price	\$6,145.00
Capacity	300 Gallons
Specs	Page 19, Row 12

SPM400FG725

Price	\$6,195.00
Capacity	400 Gallons
Specs	Page 19, Row 13

# TOW BEHIND SPRAYERS

SPRAY EQUIPMENT

REFUELING EQUIPMENT

FIRE EQUIPMENT



## TOW LYNX™ SPRAYER PERFORMANCE

PAGE	26	27	30	31
PERFORMANCE	TOW LYNX™ MARSHAL	TOW LYNX™ ECOLITE	TOW LYNX™ 365	TOW LYNX™ XSTREAM
Boom Spraying	★★★★☆	★★★★★	★★★★★	★★★★★
Spot Spraying	★★★★★	★★★★★	★★★★☆	★★★★★
High Pressure Spraying	★★★★☆	★★★☆☆	★☆☆☆☆	★★★★☆
Fire Control Spraying	★★★★☆	★★★☆☆	★★★★☆	★★★★☆
Tree Spraying	★★★★☆	★★★★☆	★★★☆☆	★★★★☆
High Volume Spraying	★★★☆☆	★★★☆☆	★★★★☆	★★★★☆

Featured Image: 55 Gallon Tow Lynx™ Xstream (WA055FG290EX)



# TOW BEHIND SPRAYER SPECS

	PRODUCT CODE	TANK SIZE (GAL)	DIMENSIONS (L X W X H)	MOTOR	PUMP	FLOW RATE (GPM)	PSI	HITCH SIZE	TIRES	HOSE LENGTH	SPRAY DISTANCE VERTICAL	SPRAY DISTANCE HORIZONTAL	DRY WEIGHT (LBS)	PRICE
TOW LYNX™ MARSHAL - PAGE 26														
1	WA055FG3GH01	55	80" x 51" x 38"	GX35 Honda/1.3 HP	Piston	2.9	290	1 7/8" Ball	ATV	100'	22'	30'	260	\$2,445.00
2	WA075FG3GH01	75	80" x 56" x 43"	GX35 Honda/1.3 HP	Piston	2.9	290	1 7/8" Ball	ATV	100'	22'	30'	345	\$2,695.00
3	WA100FG3GH01	100	91" x 60" x 40"	GX35 Honda/1.3 HP	Piston	2.9	290	1 7/8" Ball	ATV	100'	22'	30'	365	\$2,825.00
TOW LYNX™ ECOLITE - PAGE 27														
4	WA055FG412V	55	80" x 51" x 38"	12 Volt	Diaphragm	4	60	1 7/8" Ball	ATV	15'	27'	35'	215	\$1,745.00
5	WA075FG412V	75	80" x 56" x 43"	12 Volt	Diaphragm	4	60	1 7/8" Ball	ATV	15'	27'	35'	300	\$1,895.00
6	WA100FG412V	100	91" x 60" x 40"	12 Volt	Diaphragm	4	60	1 7/8" Ball	ATV	15'	27'	35'	320	\$2,195.00
TOW LYNX™ 365 - PAGE 30														
7	WA055FG225GH	55	80" x 51" x 38"	GX120 Honda/4 HP	Centrifugal	22.5	50	1 7/8" Ball	ATV	50'	27'	35'	220	\$3,095.00
8	WA075FG225GH	75	80" x 56" x 43"	GX120 Honda/4 HP	Centrifugal	22.5	50	1 7/8" Ball	ATV	50'	27'	35'	305	\$3,195.00
9	WA100FG225GH	100	91" x 60" x 40"	GX120 Honda/4 HP	Centrifugal	22.5	50	1 7/8" Ball	ATV	50'	27'	35'	325	\$3,485.00
TOW LYNX™ XSTREAM - PAGE 31														
10	WA055FG290EX	55	80" x 51" x 38"	GX120 Honda/4 HP	Diaphragm	5.8	290	1 7/8" Ball	ATV	100'	37'	45'	220	\$3,395.00
11	WA075FG290EX	75	80" x 56" x 43"	GX120 Honda/4 HP	Diaphragm	5.8	290	1 7/8" Ball	ATV	100'	37'	45'	305	\$3,445.00
12	WA100FG290EX	100	91" x 60" x 40"	GX120 Honda/4 HP	Diaphragm	5.8	290	1 7/8" Ball	ATV	100'	37'	45'	325	\$3,795.00

\*Warranty must be registered to activate your 10 year tank warranty. See page 71 for details.

Featured Image: 55 Gallon Tow Lynx™ Xstream (WA055FG290EX)





# TOW LYNX™ MARSHAL



Poly Boom	Pg 42
Steel Boom	Pg 43
Boomless Nozzle	Pg 44
Versatile Boom	Pg 44

The Tow Lynx™ Marshal works perfect behind your ATV or UTV. With an adjustable tow hitch you can hook it up in seconds. These small spray trailers are perfect for boom spraying and spot spraying.

Featured Image (Above): 55 Gallon Tow Lynx™ Marshal with a 13' Poly Boom (WA055FG3GH01)



Atomizing spray gun for spraying patterns

Enjoy the experience of a range of spraying patterns from jet stream to mist.



High flotation tires are a must

Easily tackle that rough terrain with confidence and stability.



Reliable 4 stroke Honda® engine

Spray with confidence knowing you are geared with Honda reliability.

## PERFORMANCE

- Boom Spraying ★★★★★
- Spot Spraying ★★★★★
- High Pressure Spraying ★★★★★
- Fire Control Spraying ★★★★★
- Tree Spraying ★★★★★
- High Volume Spraying ★★★★★



WA055FG3GH01	
Price	\$2,445.00
Capacity	55 Gallons
Specs	Page 25, Row 1

WA075FG3GH01	
Price	\$2,695.00
Capacity	75 Gallons
Specs	Page 25, Row 2

WA100FG3GH01	
Price	\$2,825.00
Capacity	100 Gallons
Specs	Page 25, Row 3

SPRAY EQUIPMENT

REFUELING EQUIPMENT

FIRE EQUIPMENT

# TOW LYNX™ ECOLITE



- Poly Boom Pg 42

---

- Steel Boom Pg 43

---

- Boomless Nozzle Pg 44

---

- Versatile Boom Pg 44

---

- Hose Reel Pg 45



The Tow Lynx™ EcoLite sprayer wipes away the burden of making your farm or ranch look neat. If your looking for a quiet, environment friendly sprayer, this is your best option.

Featured Image (Above): 55 Gallon Tow Lynx™ EcoLite with a Versatile Boom (WA055FG412V)

## PERFORMANCE

- Boom Spraying ★★★★★
- Spot Spraying ★★★★★
- High Pressure Spraying ★★★★★
- Fire Control Spraying ★★★★★
- Tree Spraying ★★★★★
- High Volume Spraying ★★★★★



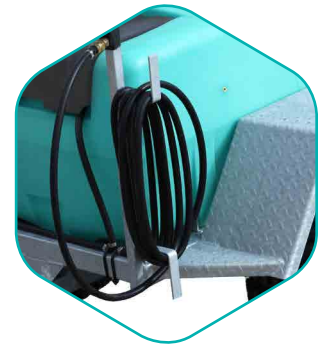
**All pump components are protected**

With the built in pump cover, your pump and regulator will last longer.



**Quick attach boom brackets**

Easily attach suggested Enduraplas® boom attachments in minutes.



**Keep your hose from tangling**

With the hose rack, your hose keeps from getting tangled in your wheels.



WA055FG412V		WA075FG412V		WA100FG412V	
Price	\$1,745.00	Price	\$1,895.00	Price	\$2,195.00
Capacity	55 Gallons	Capacity	75 Gallons	Capacity	100 Gallons
Specs	Page 25, Row 4	Specs	Page 25, Row 5	Specs	Page 25, Row 6



SPRAY EQUIPMENT

REFUELING EQUIPMENT

FIRE EQUIPMENT





SPRAY EQUIPMENT

REFUELING EQUIPMENT

FIRE EQUIPMENT



# TOW LYNX™ 365



Poly Boom	Pg 42
Steel Boom	Pg 43
Boomless Nozzle	Pg 44
Versatile Boom	Pg 44

The Tow Lynx™ 365 is built to undertake many applications of spraying. With a Honda® powered pump, this tow behind trailer sprayer is ideal for boomless spraying on rough terrain.

Featured Image (Above): 55 Gallon Tow Lynx™ 365 with a 12' Steel Boom (WA055FG225GH)



Control your boom from your seat

Easy adjust your boom pressure and nozzle selection.



High flotation tires are a must

Easily tackle that rough terrain with confidence and stability.



Drain your chemicals to the last drop

Completely clean your tank to avoid mixing 2 different spraying chemicals.

## PERFORMANCE

- Boom Spraying ★★★★★
- Spot Spraying ★★★★★
- High Pressure Spraying ★★★★★
- Fire Control Spraying ★★★★★
- Tree Spraying ★★★★★
- High Volume Spraying ★★★★★

SPRAY EQUIPMENT

REFUELING EQUIPMENT

FIRE EQUIPMENT



WA055FG225GH	
Price	\$3,095.00
Capacity	55 Gallons
Specs	Page 25, Row 7



WA075FG225GH	
Price	\$3,195.00
Capacity	75 Gallons
Specs	Page 25, Row 8



WA100FG225GH	
Price	\$3,485.00
Capacity	100 Gallons
Specs	Page 25, Row 9

# TOW LYNX™ XSTREAM



- Poly Boom Pg 42

---

- Steel Boom Pg 43

---

- Boomless Nozzle Pg 44

---

- Versatile Boom Pg 44



This Tow Lynx™ model has the most power in the Tow Lynx™ family. With a high pressure Honda® engine, you can be sure this trailer sprayer is built for hours of boom spraying.

Featured Image (Above): 55 Gallon Tow Lynx™ Xstream with a 12' Steel Boom (WA055FG290EX)

## PERFORMANCE

- Boom Spraying ★★★★★
- Spot Spraying ★★★★★
- High Pressure Spraying ★★★★★
- Fire Control Spraying ★★★★★
- Tree Spraying ★★★★★
- High Volume Spraying ★★★★★



Keep your hose neat and tidy

With the poly hose reel, you can be sure to keep your hose from getting tangled



Quick attach boom brackets

Easily attach suggested Enduraplas® boom attachments in minutes.



Atomizing spray gun for spraying patterns

Enjoy the experience of a range of spraying patterns from jet stream to mist.



WA055FG290EX	
Price	\$3,395.00
Capacity	55 Gallons
Specs	Page 25, Row 10



WA075FG290EX	
Price	\$3,445.00
Capacity	75 Gallons
Specs	Page 25, Row 11



WA100FG290EX	
Price	\$3,795.00
Capacity	100 Gallons
Specs	Page 25, Row 12

SPRAY EQUIPMENT

REFUELING EQUIPMENT

FIRE EQUIPMENT

# TRACTOR SPRAYERS

SPRAY EQUIPMENT

REFUELING EQUIPMENT

FIRE EQUIPMENT



Featured Image: 100 Gallon Land Champ™ with a 30' Poly Boom (SLC100FG8GR)



# TRACTOR SPRAYERS

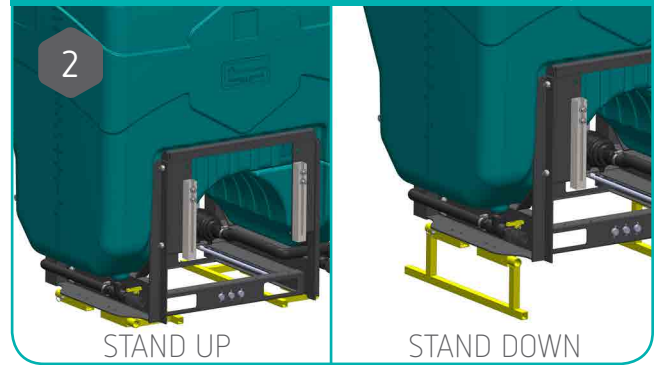
	PRODUCT CODE	TANK SIZE (GAL)	DIMENSIONS (L X W X H)	MOTOR	PUMP	FLOW RATE (GPM)	PSI	HOSE LENGTH	SPRAY DISTANCE VERTICAL	SPRAY DISTANCE HORIZONTAL	DRY WEIGHT (LBS)	PRICE
LAND CHAMP™ - PAGE 34												
1	SLC055FG8GR	55	42" x 38" x 27"	PTO	6 Roller	8	300	15'	27'	35'	175	\$1,495.00
2	SLC100FG8GR	100	27" x 44" x 48"	PTO	6 Roller	8	300	15'	27'	35'	230	\$2,095.00
3	SLC200FG8GR	200	36" x 48" x 52"	PTO	6 Roller	8	300	15'	27'	35'	290	\$2,295.00
4	SLC055FG8GRS	55	42" x 38" x 27"	PTO	Stainless Steel 6 Roller	8	300	15'	27'	35'	175	\$1,795.00
5	SLC100FG8GRS	100	27" x 44" x 48"	PTO	Stainless Steel 6 Roller	8	300	15'	27'	35'	230	\$2,395.00
6	SLC200FG8GRS	200	36" x 48" x 52"	PTO	Stainless Steel 6 Roller	8	300	15'	27'	35'	290	\$2,595.00

\*Warranty must be registered to activate your 10 year tank warranty. See page 71 for details.

Upgrade your Land Champ™ with in cab controls



Optional Land Champ™ stand for storage



Add a fresh water tank to your Land Champ™



Upgrade to 100' of hose on a poly hose reel



1 ADD 'LCES' TO CODE

Price	(Upgrade) \$550.00
Includes	3 x Solenoids, Control Box with Pressure Regulator & Wiring Harness

2 AZKF0013KIT

Price	\$154.00
Includes	Storage stand & hardware for 55, 100 & 200 Gallon Land Champ™ sprayer

3 ASFBFWKIT

Price	\$129.00
Includes	3 gallon fresh water tank with a fitted tap

4 ADD '01' TO CODE

Price	(Upgrade) \$300.00
Includes	100' of 3/8" hose on a poly hose reel

SPRAY EQUIPMENT

REFUELING EQUIPMENT

FIRE EQUIPMENT



# LAND CHAMP™



Poly Boom	Pg 42
Steel Boom	Pg 43
Boomless Nozzle	Pg 44
Versatile Boom	Pg 44
Hose Reel	Pg 45



The new Land Champ™ 3pt hitch sprayer has set a new standard with tractor spraying. While we included extra user friendly features, we also thought about your safety by engineering a counter balance tank.

Featured Image (Above): 100 Gallon Land Champ™ with 30' Poly Boom (SLC100FG8GR)



Control it directly from your seat

Easily monitor and change your boom spraying pressure.



Easily move your sprayer

Each Land Champ™ comes with integrated fork points for your convenience



Perfectly weighted tank design

This tank sits close to your seat to be sure the weight is near your rear wheels.

## PERFORMANCE

- Boom Spraying ★★★★★
- Spot Spraying ★★★★★
- High Pressure Spraying ★★★★★
- Fire Control Spraying ★★★★★
- Tree Spraying ★★★★★
- High Volume Spraying ★★★★★



SLC055FG8GR		SLC100FG8GR		SLC200FG8GR	
SLC055FG8GR	\$1,495.00	SLC100FG8GR	\$2,095.00	SLC200FG8GR	\$2,295.00
SLC055FG8GR01	\$1,795.00	SLC100FG8GR01	\$2,395.00	SLC200FG8GR01	\$2,595.00
Capacity	55 Gallons	Capacity	100 Gallons	Capacity	200 Gallons
Specs	Page 33, Row 1	Specs	Page 33, Row 2	Specs	Page 33, Row 3

SPRAY EQUIPMENT

REFUELING EQUIPMENT

FIRE EQUIPMENT

\*Product codes that include the numbers '01' come standard with 100' of hose on a Poly Hose Reel.



\*Built-in easy flush system to decontaminate your pump and boom nozzles.



\*Only on the 100 and 200 gallon Land Champ™.

\*The new quick attach boom system makes it easy to hook up and remove your boom.



\*Only on the 100 and 200 gallon Land Champ™.



Featured Image: 100 Gallon Land Champ™ with a 30' Poly Boom (SLC100FG8GR)

SPRAY EQUIPMENT

REFUELING EQUIPMENT

FIRE EQUIPMENT



SPRAY EQUIPMENT

REFUELING EQUIPMENT

FIRE EQUIPMENT





SPRAY EQUIPMENT

REFUELING EQUIPMENT

FIRE EQUIPMENT

# ATV SPRAYERS



SPRAY EQUIPMENT

REFUELING EQUIPMENT

FIRE EQUIPMENT

## ATV SPRAYER PERFORMANCE

PAGE	39	39
PERFORMANCE	GOLD SERIES	PRO SERIES
Boom Spraying	★★★★☆	★★★★☆
Spot Spraying	★★★★★	★★★★★
High Pressure Spraying	★☆☆☆☆	★☆☆☆☆
Fire Control Spraying	★☆☆☆☆	★☆☆☆☆
Tree Spraying	★☆☆☆☆	★☆☆☆☆
High Volume Spraying	★☆☆☆☆	★☆☆☆☆

Featured Image: 25 Gallon PRO Series ATV Sprayer (SAP025412V)

# ATV SPRAYER



	PRODUCT CODE	TANK SIZE (GAL)	DIMENSIONS (L X W X H)	INCLUDES BOOMLESS NOZZLE	MOTOR	PUMP	FLOW RATE (GPM)	PSI	HOSE LENGTH	SPRAY DISTANCE VERTICAL	SPRAY DISTANCE HORIZONTAL	DRY WEIGHT (LBS)	PRICE
<b>GOLD SERIES</b>													
1	SA025212V	25	30" x 40" x 16"	No	12 Volt	Diaphragm	2	60	15'	27'	35'	39	\$475.00
<b>PRO SERIES</b>													
2	SAP025412V	25	30" x 40" x 16"	Yes	12 Volt	Diaphragm	4	60	15'	27'	35'	50	\$1,025.00

\*Warranty must be registered to activate your 10 year tank warranty. See page 71 for details.

**PERFORMANCE**

- Boom Spraying ★★★★★
- Spot Spraying ★★★★★
- High Pressure Spraying ★★★★★
- Fire Control Spraying ★★★★★
- Tree Spraying ★★★★★
- High Volume Spraying ★★★★★



Fits perfect on most ATVs

Utilize your ATV while spraying in a wide range of applications.



Pro Series comes with a boomless nozzle

Spray up to 30' in rough terrain you can only get to in your ATV.

**COMPATIBLE ATTACHMENTS**

- Poly Boom Pg 42
- Steel Boom Pg 43
- Boomless Nozzle Pg 44
- Versatile Boom Pg 44
- Receiver Hitch Pg 44



SA025212V	
Price	\$475.00
Capacity	25 Gallons
Specs	Page 39, Row 1



SAP025412V	
Price	\$1,025.00
Capacity	25 Gallons
Specs	Page 39, Row 2

SPRAY EQUIPMENT

REFUELING EQUIPMENT

FIRE EQUIPMENT

# ATTACHMENTS & ACCESSORIES



SPRAY EQUIPMENT

REFUELING EQUIPMENT

FIRE EQUIPMENT

Featured Image: 30' Boomless Nozzle Kit (ASBB30P) & 13' Poly Boom (ASBP13GY)



# ATTACHMENT SPECS

	PRODUCT CODE	BOOM WIDTH UNFOLDED	BOOM WIDTH FOLDED	SPRAY COVERAGE	NUMBER OF NOZZLES	NOZZLE SPACING	*MINIMUM PUMP REQUIREMENT	MAX PUMP PRESSURE	BOOM TYPE	ROUNDUP® READY	WEIGHT (LBS)	PRICE
<b>POLY BOOM - PAGE 42</b>												
1	ASBP13GY	13'	44"	13'	8	20"	2 GPM	60 PSI	Polyethylene	Yes	40	\$495.00
2	ASBP20GY	20'	84"	20'	12	20"	4 GPM	60 PSI	Polyethylene	Yes	105	\$845.00
3	ASBP26GY	26'	84"	26'	16	20"	5 GPM	60 PSI	Polyethylene	Yes	126	\$945.00
4	ASBP30GY	30'	84"	30'	18	20"	7 GPM	60 PSI	Polyethylene	Yes	146	\$955.00
<b>STEEL BOOM - PAGE 43</b>												
5	ASBS12SS	12'	51"	13'	8	20"	2 GPM	60 PSI	Galvanized Steel	Yes	27	\$375.00
6	ASBS20SS	20'	84"	20'	12	20"	4 GPM	60 PSI	Galvanized Steel	Yes	85	\$695.00
7	ASBS26SS	26'	84"	26'	16	20"	5 GPM	60 PSI	Galvanized Steel	Yes	95	\$795.00
8	ASBS30SS	30'	84"	30'	18	20"	7 GPM	60 PSI	Galvanized Steel	Yes	110	\$845.00
<b>VERSATILE BOOM - PAGE 44</b>												
9	ASBV16	4'	4'	15'	5	20"	2 GPM	60 PSI	Galvanized Steel	Yes	16	\$260.00

\*Suggested Delevan® pumps to achieve a minimum of 40 PSI

	PRODUCT CODE	SPRAY COVERAGE	NUMBER OF NOZZLES	MINIMUM PUMP REQUIREMENT	MAX PUMP PRESSURE	ROUNDUP® READY	COMPATIBLE SPRAYERS	WEIGHT (LBS)	PRICE
<b>BOOMLESS NOZZLE KITS - PAGE 44</b>									
10	ASBB24	24'	1	2 GPM	60 PSI	Yes	All ATV Sprayers	3	\$125.00
11	ASBB30	30'	2	4 GPM	60 PSI	Yes	All ATV Sprayers	5	\$249.00
12	ASBB24L	24'	1	2 GPM	60 PSI	Yes	All UTV Sprayers (excluding Field Boss™ Sprayers)	3	\$130.00
13	ASBB30L	30'	2	4 GPM	60 PSI	Yes	All UTV Sprayers (excluding Field Boss™ Sprayers)	5	\$255.00
14	ASBB30P	30'	2	4 GPM	60 PSI	Yes	All Field Boss™ & Land Champ™ Sprayers	5	\$255.00

	PRODUCT CODE	HOSE LENGTH	HOSE SIZE	MOUNT TYPE	SPRAY GUN TYPE	PRICE
<b>HOSE REEL - PAGE 45</b>						
15	AHSPBGY01	-	-	Base	-	\$215.00
16	AHSPB100GY01	100'	3/8"	Base	CVSTAL26	\$345.00
17	AHFPBGY01	-	-	Base	-	\$285.00
18	AHFPB100GY01	100'	3/4"	Base	CVSTAL26	\$498.00

	MODEL	HITCH SIZE	COMPATIBLE BOOMS	WEIGHT (LBS)	PRICE
<b>RECEIVER HITCH - PAGE 44</b>					
19	AZFRH002	1 1/4"	All Poly & Steel Booms	20	\$262.66
20	AZFRH001	2"	All Poly & Steel Booms	24	\$195.54

# POLY BOOM



Field Boss™ 365	Pg 7	12 Volt Pro Series	Pg 17
Field Boss™ Xstream	Pg 8	Tow Lynx™ Marshal	Pg 26
Field Boss™ EcoLite	Pg 9	Tow Lynx™ Ecolite	Pg 27
Spray Marshal™	Pg 14	Tow Lynx™ 365	Pg 30
Marshal Plus™	Pg 15	Tow Lynx™ Xstream	Pg 31
12 Volt Gold Series	Pg 16		



We are proud to announce this is the one and only poly boom. This robust design includes features like the hit and swing boom action. Easily attach it to the selected Enduraplas sprayers.

Featured Image (Above): 30' Poly Boom attached to a Land Champ™ (ASBP30GY)



All nozzles are always protected

No need to worry if your boom hits a post or tree, your nozzles are safe.



The hit and swing boom action

Don't let those obstacles set you back from spraying near poles or trees.



All poly booms fold for improved storage

Fit through narrow gates when your boom is neatly folded up.



High quality nozzles means efficiency

Never miss a section because you have high quality *non drip* nozzles.



ASBP13GY

Price	\$495.00
Spray Width	13 Feet
Specs	Page 41, Row 1



ASBP20GY

Price	\$845.00
Spray Width	20 Feet
Specs	Page 41, Row 2



ASBP26GY

Price	\$945.00
Spray Width	26 Feet
Specs	Page 41, Row 3



ASBP30GY

Price	\$995.00
Spray Width	30 Feet
Specs	Page 41, Row 4

SPRAY EQUIPMENT

REFUELING EQUIPMENT

FIRE EQUIPMENT

# STEEL BOOM



Field Boss™ 365	Pg 7	12 Volt Pro Series	Pg 17
Field Boss™ Xstream	Pg 8	Tow Lynx™ Marshal	Pg 26
Field Boss™ EcoLite	Pg 9	Tow Lynx™ Ecolite	Pg 27
Spray Marshal™	Pg 14	Tow Lynx™ 365	Pg 30
Marshal Plus™	Pg 15	Tow Lynx™ Xstream	Pg 31
12 Volt Gold Series	Pg 16		

The steel boom is perfect for extremely efficient field or acreage spraying. Utilize your UTV with boom spraying covering up to 30' in one single pass.

Featured Image (Above): 26' Steel Boom attached to a Field Boss™ 365 (ASBS26SS)



**Attach to your sprayer in minutes**

With just 4 bolts, you can have your boom attached to your Enduraplas sprayer.



**Coverage that never fails**

The nozzles are designed to spray efficiently to eliminate any missing strips.



**All nozzles are completely protected**

Remove any worry of busting nozzles when hitting a still object.



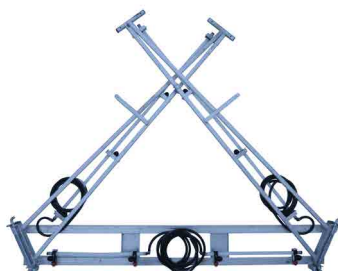
**3 flexible spraying sections**

This plumbing allows you to spray left, right or center to suit your needs.



ASBS12SS

Price	\$375.00
Spray Width	13 Feet
Specs	Page 41, Row 5



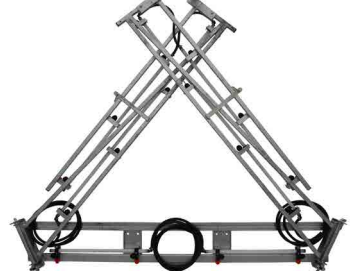
ASBS20SS

Price	\$695.00
Spray Width	20 Feet
Specs	Page 41, Row 6



ASBS26SS

Price	\$795.00
Spray Width	26 Feet
Specs	Page 41, Row 7



ASBS30SS

Price	\$845.00
Spray Width	30 Feet
Specs	Page 41, Row 8

SPRAY EQUIPMENT

REFUELING EQUIPMENT

FIRE EQUIPMENT

# BOOM AND NOZZLE KITS



Field Boss™ 365	Pg 7	12 Volt Pro Series	Pg 17
Field Boss™ Xstream	Pg 8	Tow Lynx™ Marshal	Pg 26
Field Boss™ EcoLite	Pg 9	Tow Lynx™ Ecolite	Pg 27
Spray Marshal™	Pg 14	Tow Lynx™ 365	Pg 30
Marshal Plus™	Pg 15	Tow Lynx™ Xstream	Pg 31
12 Volt Gold Series	Pg 16		



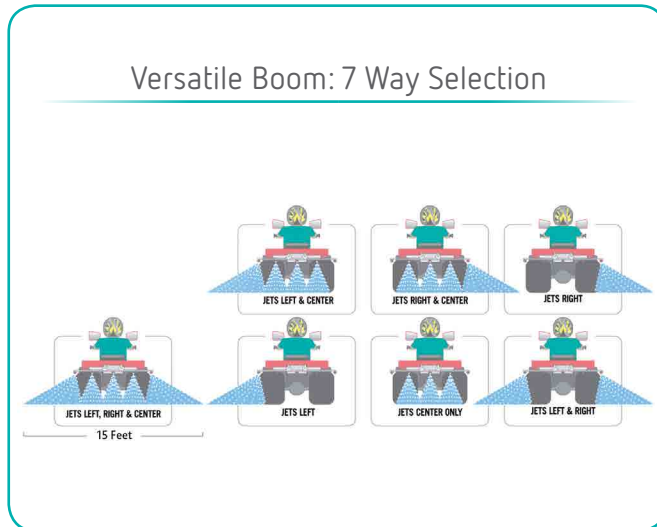
The versatile boom didn't get its name for nothing. With a built in 7 way selection feature, you can choose where you would like to spray with the turn of a tap.

Featured Image (Above): Versatile Boom attached to a 55 Gallon Tow Lynx™ EcoLite (ASBV16)



Change where you spray

Turn each section on and off depending on your spraying application.



Cover up to 30' with no boom

An easy and cost effective way to spray just like you have a boom.



ASBV16	
Price	\$260.00
Spray Width	15 Feet
Specs	Page 41, Row 9



RECEIVER HITCH	
Price	\$
Hitch size	2"-3"
Specs	Page 41, Rows 19-20



BOOMLESS NOZZLE KITS	
Price	\$
Spray Width	24'-30'
Specs	Page 41, Row 10-14

SPRAY EQUIPMENT

REFUELING EQUIPMENT

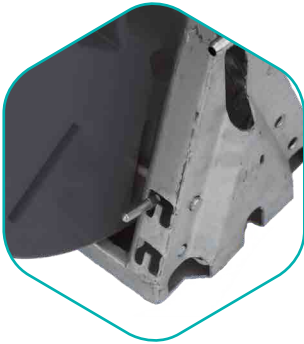
FIRE EQUIPMENT

# HOSE REELS



While the hose reel has been the most popular Enduraplas attachment, the receiver hitch is definitely on its way. The poly hose reel is unique because of its 100% poly structure.

Featured Image (Above): 50' Hose reel attached to a Field Boss™ EcoLite (AHSPBGY01)



Enjoy the built in locking system

This feature eliminates the risk of your hose unwinding in transit.



Easy to wind, hard to crack.

With the poly construction, rough terrain is not a danger.



User-friendly, time saving controls

Quickly rewind the hose back into position with the press of a button.



Powerful motor that will save time

With reliable components used, downtime is significantly reduced.



AHSPBGY01	
AHSPBGY01	\$215.00
AHSPS100GY01	\$345.00
Hose Length	100'
Specs	Page 41, Row 15-16

AHFPBGY01	
AHFPBGY01	\$285.00
AHFPB100GY01	\$498.00
Hose Length	100'
Specs	Page 41, Row 17-18

AHSS03E300	
Price	\$1,835.00
Hose Size	1/2"
Hose Length	300'

\*Product codes that include the number '100' come standard with a 100' of hose.

# PARTS



SPRAY EQUIPMENT

REFUELING EQUIPMENT

FIRE EQUIPMENT

# PARTS



	PRODUCT CODE	DESCRIPTION	MAX FLOW (GPM)	MAX PRESSURE (PSI)	SPRAY PATTERN	ADJUSTABLE SPRAY	INLET FITTING SIZE	PRICE
<b>SPRAY GUNS</b>								
1	CPLF01	HEAVY DUTY SPRAY GUN	4	800	Jet/Fan	Yes	3/8"	\$98.63
2	CVSG4507F	VERSATILIE SPRAY GUN	5	100	Jet/Fan	Yes	3/8"	\$10.65
3	CVSTAL24	STANDARD SPRAY GUN	7	250	Jet/Fan	Yes	3/8"	\$25.09
4	CVSTAL26	DELUX SPRAY GUN	7	350	Jet/Fan	Yes	3/8"	\$28.49
5	CVSTAL28	TURBO JET SPRAY GUN	15	700	Jet/Fan/Fog	Yes	3/8"	\$80.17
6	CVSTAL30	LONG RANGE SPRAY GUN	25	850	Jet/Fan/Fog	Yes	1/2"	\$202.50



	PRODUCT CODE	DESCRIPTION	PRICE
<b>LIDS</b>			
1	CFLP16HV	16" HINGED, VENTED LID	\$58.02
2	CA3511221	8" THREADED, VENTED LID	\$33.65
3	CVTL06	6" THREADED VENTED LID ONLY	\$9.21
4	CG839113021	4" THREADED VENTED LID ONLY	\$6.00

	PRODUCT CODE	DESCRIPTION	PRICE
<b>HOSE</b>			
1	CLUESB020001	3/8" EPDM AG 200 PSI BLACK HOSE/PER FT	\$0.86
2	CLUESB020004	1/2" EPDM AG 200 PSI BLACK HOSE/PER FT	\$2.00
3	CLUESB020002	3/4" EPDM AG 200 PSI BLACK HOSE/PER FT	\$1.29
4	CLUVGC02502	1/2 REINFORCED VINYL HOSE/PER FT	\$1.45
5	CLUESB020005	1" EPDM AG 200 PSI BLACK HOSE	\$219.00

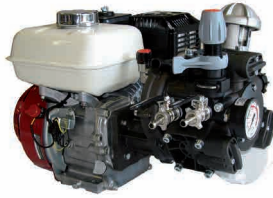


CFXES04	
Price	\$795.00
Includes	3 x Solenoids, Control Box with Pressure Regulator & Wiring Harness



AVPC01	
Price	\$69.00
Dimensions	20"L x 15"W x 17"H
Material	Poly

# PARTS



	PRODUCT CODE	MAX FLOW (GPM)	MAX PRESSURE (PSI)	MAX AMPS	MOTOR TYPE	PUMP TYPE	SEAL TYPE	HOSE CONNECTION SIZE	PRICE
<b>12 VOLT PUMPS</b>									
1	APD01G040P	1	40	2.6	12 VDC	Diaphragm	Viton valves/Santoprene diaphragm	3/8"	\$67.81
2	APD01G060P	1.2	60	4.7	12 VDC	Diaphragm	Viton valves/Santoprene diaphragm	3/8"	\$119.33
3	APD02G060P	2	60	5.7	12 VDC	Diaphragm	Viton valves/Santoprene diaphragm	3/8"	\$113.48
4	APD03G060P	3.2	60	9.9	12 VDC	Diaphragm	Viton valves/Santoprene diaphragm	1/2"	\$173.43
5	APD04G060P	4	60	11.3	12 VDC	Diaphragm	Viton valves/Santoprene diaphragm	1/2"	\$194.22
6	APD05G060P	5	60	16.3	12 VDC	Diaphragm	Viton valves/Santoprene diaphragm	1/2"	\$191.96
7	APD07G060PQB	7	60	25	12 VDC	Diaphragm	Viton valves/Santoprene diaphragm	1/2"	\$442.19
<b>GAS ENGINE PUMPS</b>									
8	CPEP001	22	57	-	GX120 Honda/4 HP	Centrifugal	Viton	In 1"/Out 3/4"	\$1,351.39
9	CPEP002	5.8	290	-	GX120 Honda/4 HP	Diaphragm	NBR	In 3/4"/Out 1/2"	\$1,266.00
10	APVD03	11	580	-	GX200 Honda/6.5 HP	Diaphragm	NBR	In 1"/Out 2 x 1/2"	\$2,200.00
11	APVD02	18	725	-	GX390 Honda/13 HP	Diaphragm	NBR	In 1 1/4"/Out 2 x 1/2"	\$3,950.00
<b>ROLLER PUMPS</b>									
12	APD19G006R	8	300	-	PTO	6 Roller	Viton	In 3/4"/Out 3/4"	\$268.23
13	APD22G006R	8	300	-	PTO	Stainless Steel 6 Roller	Viton	In 3/4"/Out 3/4"	\$743.29



APYD02KIT

	PRODUCT CODE	FLOW (GPM)	PRESSURE (PSI)	MOTOR TYPE	PUMP TYPE	SEAL TYPE	HOSE LENGTH	HOSE CONNECTION SIZE	SPRAY DISTANCE	SPRAY PATTERN	ADJUSTABLE SPRAY	PRICE
<b>PUMP &amp; HOSE KITS</b>												
1	APYD02KIT	2.9	290	GX35 Honda/1.3 HP	Piston	NBR	100'	In 1/2" BSP/Out 3/8"	30'	Jet/Fan/Fog	Yes	\$1,115.00

SPRAY EQUIPMENT

REFUELLING EQUIPMENT

FIRE EQUIPMENT



# PARTS



VALVES



FITTINGS



SPRAY NOZZLES



STRAINERS & FILTERS



REGULATORS & GAUGES

To access our large range of parts and accessories, visit you local Enduraplas dealer or visit our website to download an owners manual.



[www.enduraplasdealers.com](http://www.enduraplasdealers.com)



[www.enduraplas.com/manuals](http://www.enduraplas.com/manuals)

# DIESEL TRANSFER TANKS



SPRAY EQUIPMENT

REFUELING EQUIPMENT

FIRE EQUIPMENT

Featured Image: 100 Gallon Diesel Fuel Boss™ (RDU100S10D)

# DIESEL TRANSFER TANK SPECS

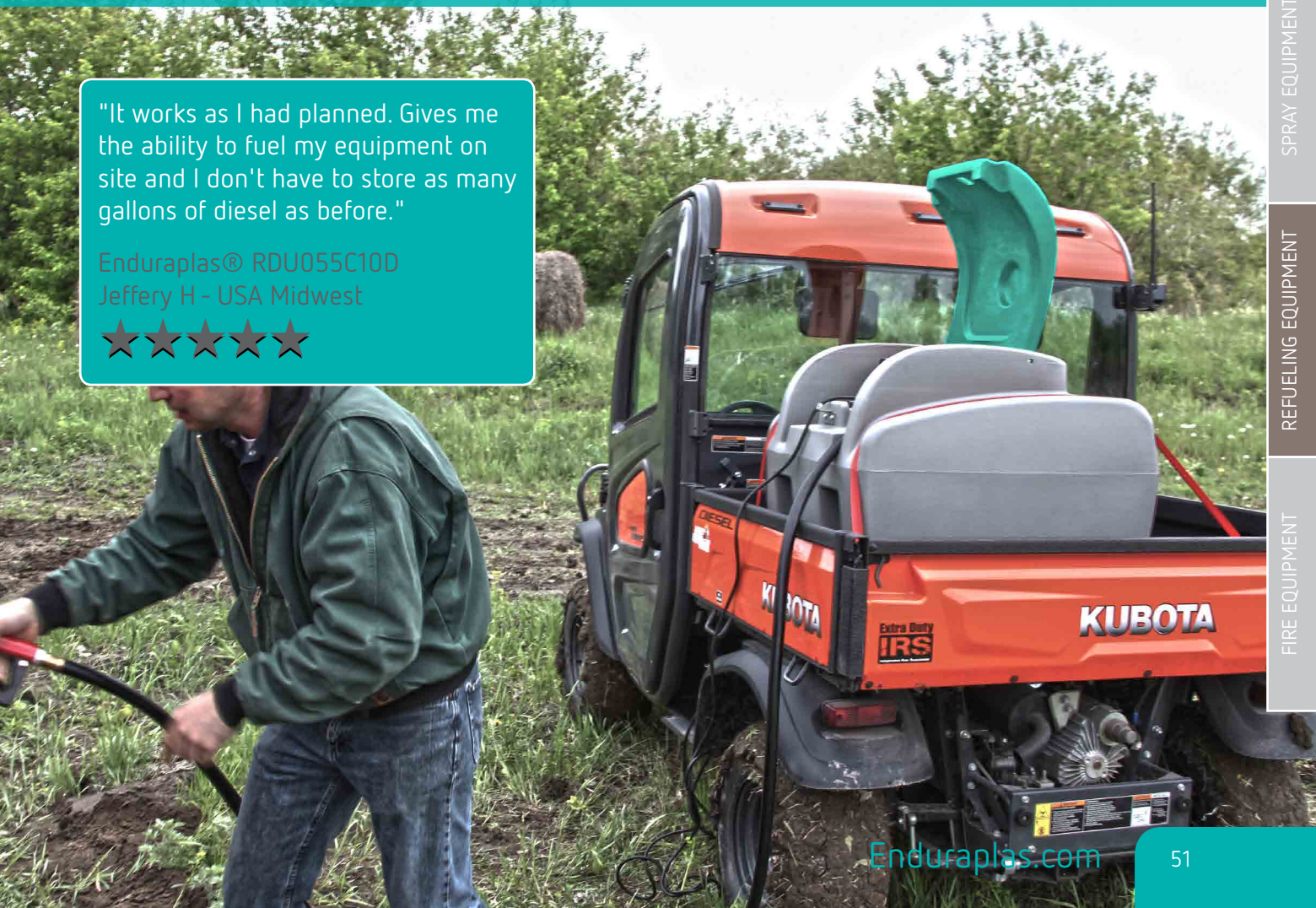
	PRODUCT CODE	TANK SIZE (GAL)	DIMENSIONS (L X W X H)	*COMPATIBLE WITH	FILL POINT	PUMP	GUN	FLOW RATE (GPM)	ELECTRIC CABLE LENGTH	HOSE LENGTH	TANK MATERIAL TYPE	DRY WEIGHT (LBS)	PRICE
DIESEL FUEL BOSS™ - PAGE 53 & 54													
1	RDU025C10D	25	32" x 27" x 20"	Diesel	3"	Vane	Auto shut-off	10	16'	16'	Polyethylene	69	\$695.00
2	RDU055C10D	55	32" x 27" x 30"	Diesel	3"	Vane	Auto shut-off	10	16'	16'	Polyethylene	80	\$775.00
3	RDU055S10D	55	48" x 34" x 22"	Diesel	3"	Vane	Auto shut-off	10	16'	16'	Polyethylene	80	\$795.00
4	RDU075N10D	75	51" x 21" x 31"	Diesel	3"	Vane	Auto shut-off	10	16'	16'	Polyethylene	90	\$825.00
5	RDU100S10D	100	47" x 34" x 34"	Diesel	3"	Vane	Auto shut-off	10	16'	16'	Polyethylene	100	\$885.00
6	RDU100N10D	100	51" x 21" x 38"	Diesel	3"	Vane	Auto shut-off	10	16'	16'	Polyethylene	100	\$875.00
7	RDU100S15D	100	47" x 34" x 34"	Diesel	3"	Vane	Auto shut-off	15	16'	16'	Polyethylene	100	\$1,045.00

\*Warranty must be registered to activate your 10 year tank warranty. See page 71 for details.

Featured Image: 55 Gallon Diesel Fuel Boss™ (RDU055C10D)

"It works as I had planned. Gives me the ability to fuel my equipment on site and I don't have to store as many gallons of diesel as before."

Enduraplas® RDU055C10D  
Jeffery H - USA Midwest



SPRAY EQUIPMENT

REFUELING EQUIPMENT

FIRE EQUIPMENT

# DURABILITY TEST



YouTube.com/Enduraplas

**ENDURAPLAS**  
**VS**  
**MAN TOOLS**

SPRAY EQUIPMENT

REFUELING EQUIPMENT

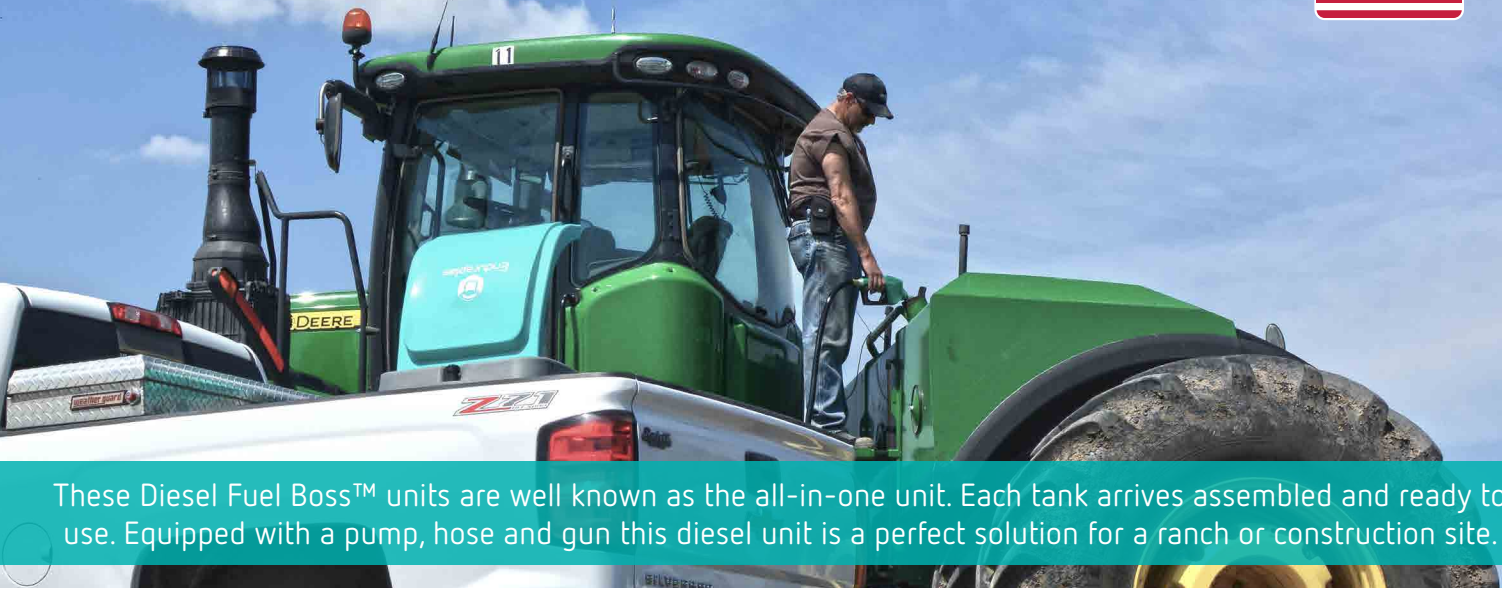
FIRE EQUIPMENT



YouTube.com/Enduraplas

**ENDURAPLAS**  
**VS**  
**TRUCK**

# DIESEL FUEL BOSS™



These Diesel Fuel Boss™ units are well known as the all-in-one unit. Each tank arrives assembled and ready to use. Equipped with a pump, hose and gun this diesel unit is a perfect solution for a ranch or construction site.

Featured Image (Above): 100 Gallon Diesel Fuel Boss™ (RDU100S10D)



**No assembly required**

Each Diesel Fuel Boss™ comes complete with a pump, hose and gun.



**Protect your pump and components**

Keep your expensive pump protected with the built-in pump cover.



**Minimize downtime on site**

The auto shut-off nozzle enable you to spend time on other tasks while refueling.



**Easy to move it where you need it**

These built-in easy lift handles allow you to load and unload your tank when required.



RDU025C10D	
Price	\$695.00
Capacity	25 Gallons
Specs	Page 51, Row 1

RDU055C10D	
Price	\$775.00
Capacity	55 Gallons
Specs	Page 51, Row 2

RDU055S10D	
Price	\$795.00
Capacity	55 Gallons
Specs	Page 51, Row 3

RDU075N10D	
Price	\$825.00
Capacity	75 Gallons
Specs	Page 51, Row 4

SPRAY EQUIPMENT

REFUELING EQUIPMENT

FIRE EQUIPMENT



# DIESEL FUEL BOSS™



RDU100S10D	
Price	\$885.00
Capacity	100 Gallons
Specs	Page 51, Row 5



RDU100N10D	
Price	\$875.00
Capacity	100 Gallons
Specs	Page 51, Row 6

## HIGH FLOW PUMP



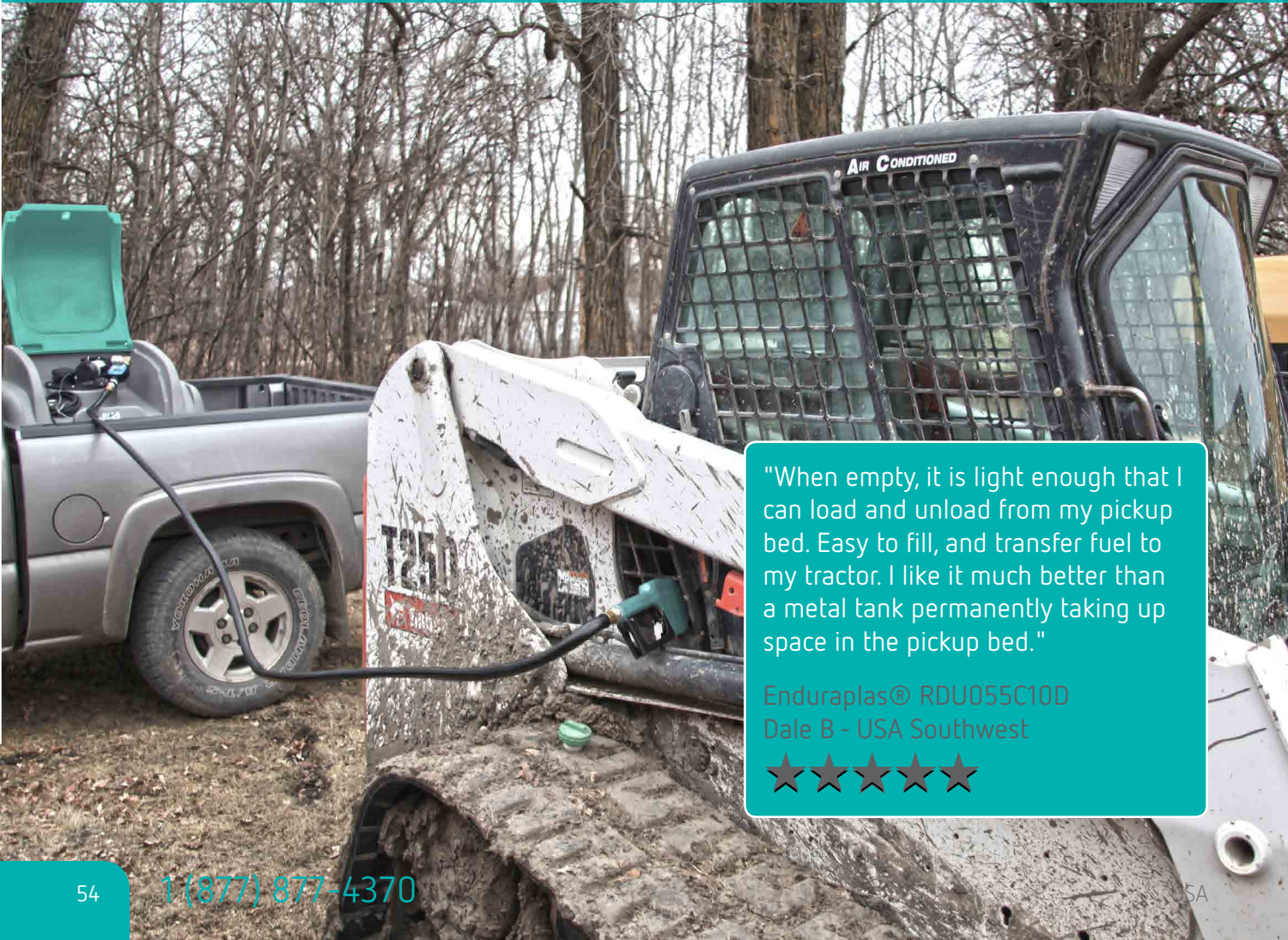
RDU100S15D	
Price	\$1,045.00
Capacity	100 Gallons
Specs	Page 51, Row 7

Featured Image: 100 Gallon Diesel Fuel Boss™ (RDU100S10D)

SPRAY EQUIPMENT

REFUELING EQUIPMENT

FIRE EQUIPMENT



"When empty, it is light enough that I can load and unload from my pickup bed. Easy to fill, and transfer fuel to my tractor. I like it much better than a metal tank permanently taking up space in the pickup bed."

Enduraplas® RDU055C10D  
Dale B - USA Southwest



# DIESEL FUEL BOSS™



Exploring my options, I came across this diesel fuel transfer tank. Wow. This is a nice well made piece of equipment. The pump is rated 10 gallons per minute so you get gas station like flow out of the gas station auto shut-off quality nozzle. The filler opening is large and has a removable screen to keep contaminants out. The power cord has no problem reaching the battery under the hood and I have a four door truck with a full size bed. The tank is nearly indestructible. It will never rust or corrode. It has a drain opening if needed.

Enduraplas® RDU025C10D  
Tony - USA Southwest



SPRAY EQUIPMENT

REFUELING EQUIPMENT

FIRE EQUIPMENT



Featured Image: 100 Gallon Diesel Fuel Boss™ (RDU100S10D)

# DEF DISPENSERS



SPRAY EQUIPMENT

REFUELING EQUIPMENT

FIRE EQUIPMENT

Featured Image: 55 Gallon DEF Fuel Boss™ (REU055C09S)



# DEF DISPENSER SPECS

	PRODUCT CODE	TANK SIZE (GAL)	DIMENSIONS (L X W X H)	*COMPATIBLE WITH	FILL POINT	PUMP	GUN	FLOW RATE (GPM)	ELECTRIC CABLE LENGTH	HOSE LENGTH	TANK MATERIAL TYPE	DRY WEIGHT (LBS)	PRICE
DEF FUEL BOSS™ - PAGE 58													
1	REU025C09S	25	32" x 27" x 20"	DEF	3/4"	Vane	Auto shut-off	8	21'	20'	Polyethylene	74	\$1,345.00
2	REU055C09S	55	32" x 27" x 30"	DEF	3/4"	Vane	Auto shut-off	8	21'	20'	Polyethylene	85	\$1,445.00
3	REU075N09S	75	51" x 21" x 31"	DEF	3/4"	Vane	Auto shut-off	8	21'	20'	Polyethylene	95	\$1,495.00
4	REU100S09S	100	47" x 34" x 34"	DEF	3/4"	Vane	Auto shut-off	8	21'	20'	Polyethylene	105	\$1,545.00

\*Warranty must be registered to activate your 10 year tank warranty. See page 71 for details.

Featured Image: 55 Gallon DEF Fuel Boss™ (REU055C09S)



"Used it this fall for our combine, before I used 5 gallon containers. That got old fast, so I went for this 55 gallon Enduraplas system. A lot easier and faster."

Enduraplas® REU055C09S  
Robert B - USA Midwest



SPRAY EQUIPMENT

REFUELING EQUIPMENT

FIRE EQUIPMENT



# DEF FUEL BOSS™



These DEF Fuel Boss™ units are manufactured with poly and stainless steel components, eliminating any chance of corrosion. Built to slide into your pickup or UTV, this dispenser is perfect for filling up large farm machinery.

Featured Image (Above): 55 Gallon DEF Fuel Boss™ (REU055C09S)

SPRAY EQUIPMENT

REFUELING EQUIPMENT

FIRE EQUIPMENT



**Guaranteed no corrosion from DEF**

All DEF Fuel Boss™ units come with poly or stainless steel components.



**Protect your pump and components**

Keep your expensive pump protected with the built-in pump cover.



**Compact space saving design**

Don't waste useful space in your pickup or UTV.



**Easy to move it where you need it**

These built-in easy lift handles allow you to load and unload your tank when required.



	REU025C09S	REU055C09S	REU075N09S	REU100S09S
Price	\$1,345.00	\$1,445.00	\$1,495.00	\$1,545.00
Capacity	25 Gallons	55 Gallons	75 Gallons	100 Gallons
Specs	Page 57, Row 1	Page 57, Row 2	Page 57, Row 3	Page 57, Row 4



CASE **ii**



TITAN  
MACHINERY  
4200310

SPRAY EQUIPMENT

REFUELING EQUIPMENT

FIRE EQUIPMENT

"We spent a lot of time looking for a tank we could use on the farm as a transfer tank. Boy when we saw these we knew we'd struck gold. This unit fits in my pick up in front of the goose neck hitch."

Enduraplas® REU075N09S  
Daryl M - USA Midwest



Featured Image: 55 Gallon DEF Fuel Boss™ (REU055C09S)

# PARTS



	PRODUCT CODE	FLOW (GPM)	PUMP TYPE	SEAL TYPE	HOSE LENGTH	ELECTRIC CABLE LENGTH	HOSE CONNECTION SIZE	GUN TYPE	PRICE
<b>DIESEL PUMP KITS</b>									
1	ARDPK01	10	Vane	NBR	16'	16'	3/4"	Auto shut-off	\$227.46
2	ARDPDP01	10	Vane	NBR	-	16'	3/4"	-	\$139.32
<b>DEF PUMP KITS</b>									
3	CPPE002	8	Vane	NBR	20'	21'	3/4"	Auto shut-off	\$645.00
4	ARQPT32L12	8	Vane	NBR	-	21'	3/4"	-	\$325.00



	PRODUCT CODE	DESCRIPTION	PRICE
<b>AUTO SHUT-OFF GUNS</b>			
1	CENPA01	DEF Auto Shut-off Gun	\$147.25
2	ARDNA01	Diesel Auto Shut-off Gun	\$52.00

	PRODUCT CODE	DESCRIPTION	PRICE
<b>FLOWMETER</b>			
1	ARFD01	Diesel & DEF Flowmeter	\$128.57

Featured Image: DEF Auto Shut-off Gun(CENS01)



# PARTS



STAINLESS VALVES



STAINLESS FITTINGS



HOSE



DIESEL PUMP PARTS



DEF PUMP PARTS

To access our large range of parts and accessories, visit you local Enduraplas dealer or visit our website to download an owners manual.



[www.enduraplasdealers.com](http://www.enduraplasdealers.com)



[www.enduraplas.com/manuals](http://www.enduraplas.com/manuals)

# FIRE CONTROL SPRAYERS

SPRAY EQUIPMENT

REFUELING EQUIPMENT

FIRE EQUIPMENT

Featured Image: 250 Gallon Fire Ranger™ (SMFF250FG120GH)

# FIRE CONTROL SPRAYER SPECS

	PRODUCT CODE	TANK SIZE (GAL)	DIMENSIONS (L X W X H)	MOTOR	PUMP	FLOW RATE (GPM)	PSI	INCLUDES FOAM TANK	HOSE LENGTH	SPRAY DISTANCE VERTICAL	SPRAY DISTANCE HORIZONTAL	DRY WEIGHT (LBS)	PRICE
<b>FIRE RANGER™ - PAGE 64 &amp; 65</b>													
1	SMFB060FG120GH	60	48" x 38" x 23"	GX160 Honda/5.5 HP	Centrifugal	120	100	No	100'	35'	40'	235	\$2,895.00
2	SMFB100FG120GH	100	48" x 45" x 27"	GX160 Honda/5.5 HP	Centrifugal	120	100	No	100'	35'	40'	250	\$2,995.00
3	SMF200FG120GH	200	80" x 47" x 33"	GX160 Honda/5.5 HP	Centrifugal	120	100	No	100'	35'	40'	358	\$3,595.00
4	SMF250FG120GH	250	80" x 47" x 38"	GX160 Honda/5.5 HP	Centrifugal	120	100	No	100'	35'	40'	458	\$3,695.00
5	SMF300FG120GH	300	102" x 46" x 36"	GX160 Honda/5.5 HP	Centrifugal	120	100	No	100'	35'	40'	521	\$3,895.00
6	SMF400FG120GH	400	102" x 46" x 45"	GX160 Honda/5.5 HP	Centrifugal	120	100	No	100'	35'	40'	541	\$3,995.00
<b>FOAM RANGER™ - PAGE 66 &amp; 67</b>													
9	SMFFB060FG120GH	60	48" x 38" x 23"	GX160 Honda/5.5 HP	Centrifugal	120	100	Yes	100'	33'	36'	240	\$3,340.00
10	SMFFB100FG120GH	100	48" x 45" x 27"	GX160 Honda/5.5 HP	Centrifugal	120	100	Yes	100'	33'	36'	255	\$3,440.00
11	SMFF200FG120GH	200	80" x 47" x 33"	GX160 Honda/5.5 HP	Centrifugal	120	100	Yes	100'	33'	36'	393	\$4,795.00
12	SMFF250FG120GH	250	80" x 47" x 38"	GX160 Honda/5.5 HP	Centrifugal	120	100	Yes	100'	33'	36'	493	\$4,895.00
13	SMFF300FG120GH	300	102" x 46" x 36"	GX160 Honda/5.5 HP	Centrifugal	120	100	Yes	100'	33'	36'	556	\$4,995.00
14	SMFF400FG120GH	400	102" x 46" x 45"	GX160 Honda/5.5 HP	Centrifugal	120	100	Yes	100'	33'	36'	576	\$5,095.00
<b>FIRE CONTROL BACKPACK - PAGE 63</b>													
15	SKF04	4	7" x 16" x 21"	-	Double Action	-	-	No	40"	22'	39'	10	\$199.00
<b>QUICK RESPONSE UNITS - PAGE 63</b>													
16	SMFF120GH02	15	47" x 23" x 37"	GX160 Honda/5.5 HP	Centrifugal	120	100	Yes	100'	35'	40'	210	\$2,995.00
17	SMF120GH02	-	47" x 23" x 29"	GX160 Honda/5.5 HP	Centrifugal	120	100	No	100'	33'	36'	245	\$1,995.00

\*Warranty must be registered to activate your 10 year tank warranty. See page 71 for details.



SKF04	
Price	\$199.00
Capacity	4 Gallons
Specs	Page 63, Row 15



SMFF120GH02	
Price	\$2,995.00
Capacity	15 Gallons
Specs	Page 63, Row 16



SMF120GH02	
Price	\$1,995.00
Hose Length	100'
Specs	Page 63 Row 17



# FIRE RANGER™



The Fire Ranger™ is designed to be your ideal fire control unit with a very affordable price tag. It is a must for every fire department and farmer to have a backup like this included in their fire emergency plan.

Featured Image (Above): 250 Gallon Fire Ranger™ (SMFF250FG120GH)



**Load and unload much faster**

Built-in fork points make it easier to maneuver without being awkward.



**Integrated quick fill system**

Utilize the quick fill advantage to fill your tank efficiently.



**With the fire nozzle, unleash volume**

Don't be short changed by lack of water stream. Enjoy the high flow performance.



**4 x Built-in tie down points**

Secure the unit quickly and safely with purposed built tie down points.



SMFB060FG120GH	
Price	\$2,895.00
Capacity	60 Gallons
Specs	Page 63, Row 1



SMFB100FG120GH	
Price	\$2,995.00
Capacity	100 Gallons
Specs	Page 63, Row 2

SPRAY EQUIPMENT

REFUELING EQUIPMENT

FIRE EQUIPMENT



# FIRE RANGER™



## SMF200FG120GH

Price	\$3,595.00
Capacity	200 Gallons
Specs	Page 63, Row 3

## SMF250FG120GH

Price	\$3,695.00
Capacity	250 Gallons
Specs	Page 63, Row 4

## SMF300FG120GH

Price	\$3,895.00
Capacity	300 Gallons
Specs	Page 63, Row 5

## SMF400FG120GH

Price	\$3,995.00
Capacity	400 Gallons
Specs	Page 63, Row 6

Featured Image: 250 Gallon Fire Ranger™ (SMFF250FG120GH)



SPRAY EQUIPMENT

REFUELING EQUIPMENT

FIRE EQUIPMENT



# FOAM RANGER™



The Foam Ranger™ is the ultimate beast for suppressing your fire in record amount of time. With its use of foam it will suppress your fire up to 4 times faster than water.

Featured Image (Above): 300 Gallon Foam Ranger™ (SMFF300FG120GH)

SPRAY EQUIPMENT

REFUELING EQUIPMENT

FIRE EQUIPMENT



**Foam for creating long lasting fire breaks**

Easily suppress and control the flames so the burning is controlled.



**A special air induction nozzle included**

Get the most possible from your foam while saving water.



**A built in foam tank and foam gauge**

Control how much foam you dispense with the twist of a knob.



**Load and unload much faster**

Built-in fork points make it easier to maneuver without being awkward.



SMFFB060FG120GH	
Price	\$3,340.00
Capacity	60 Gallons
Specs	Page 63, Row 9



SMFFB100FG120GH	
Price	\$3,440.00
Capacity	100 Gallons
Specs	Page 63, Row 10

# FOAM RANGER™



## SMFF200FG120GH

Price	\$4,795.00
Capacity	150 Gallons
Specs	Page 63, Row 11

## SMFF250FG120GH

Price	\$4,895.00
Capacity	250 Gallons
Specs	Page 63, Row 12

## SMFF300FG120GH

Price	\$4,995.00
Capacity	300 Gallons
Specs	Page 63, Row 13

## SMFF400FG120GH

Price	\$5,095.00
Capacity	400 Gallons
Specs	Page 63, Row 14

Featured Image: 300 Gallon Foam Ranger™ (SMFF300FG120GH)



SPRAY EQUIPMENT

REFUELING EQUIPMENT

FIRE EQUIPMENT

# ACCESSORIES & PARTS



	PRODUCT CODE	MAX FLOW (GPM)	MAX PRESSURE (PSI)	MAX AMPS	MOTOR TYPE	PUMP TYPE	SEAL TYPE	HOSE CONNECTION SIZE	PRICE
<b>GAS ENGINE PUMPS</b>									
1	APAC09	120	100	-	GX160 Honda/5 HP	Centrifugal	NBR	In 2" / Out 2 x 1", 1 x 1 1/2"	\$995.00



ASFFN07



CBGHN075



ASFFN01



ASFFN02

	PRODUCT CODE	MAX FLOW (GPM)	MAX PRESSURE (PSI)	SPRAY PATTERN	ADJUSTABLE SPRAY	INLET FITTING SIZE	PRICE
<b>FIRE NOZZLES</b>							
1	ASFFN07	50	150	Fog / Straight Stream	Yes	1-1/2" NPSH / NPT	\$30.00
2	CBGHN075	20	140	Fog / Straight Stream	Yes	3/4" GHT female	\$42.00
3	ASFFN01	8	200	Foam	No	3/4" GHT female	\$168.00
4	ASFFN02	15	200	Foam	No	1-1/2" NPSH / NPT	\$79.00



	PRODUCT CODE	DIAMETER	WEIGHT (LBS)	MATERIAL	AMOUNT NEEDED PER 100 GALLONS	PRICE
<b>BALL BAFFLES</b>						
1	AVB195	7.5"	0.25	Poly	50	\$7.00
2	AVB355	14"	0.8	Poly	10	\$10.00

"With ball baffles, anytime you apply the brakes, you don't have the push from the water and you don't feel the slosh going back and forward in the tank. It's complete stability when driving around curves. I don't feel like there's any loss of control. There's no shakiness in the vehicle. Overall, it makes it feel like there is no water in the tank. I will never go back to a tank without baffle balls."

Enduraplas® Ball Baffles  
Nick M - USA Midwest



# PARTS



VALVES



FITTINGS



PUMP PARTS



LIDS

To access our large range of parts and accessories, visit you local Enduraplas dealer or visit our website to download an owners manual.



[www.enduraplasdealers.com](http://www.enduraplasdealers.com)

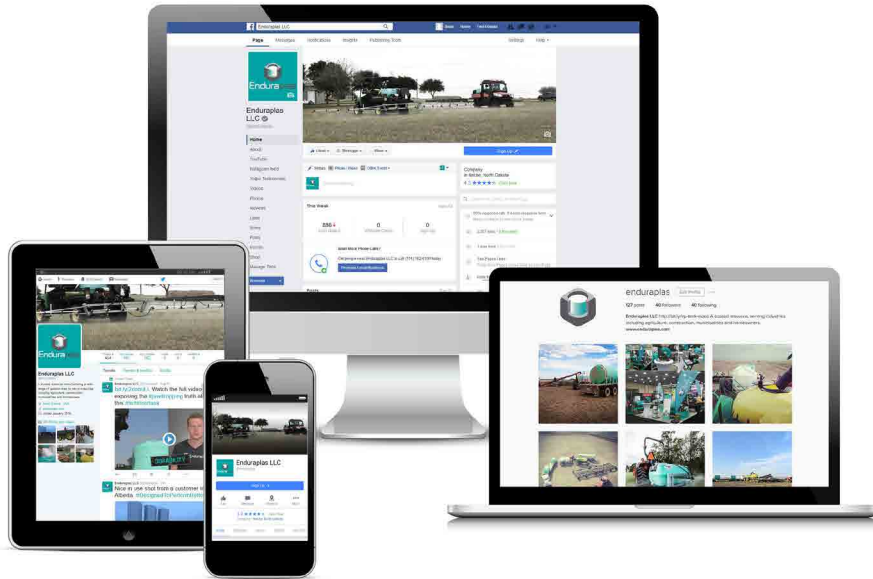


[www.enduraplas.com/manuals](http://www.enduraplas.com/manuals)

# OUR COMMUNITY

## STAY CONNECTED

Want to be kept up-to-date on the latest news and information from Enduraplas? Enduraplas has several ways to get easy access to news alerts and instant updates on what's happening in the world of Enduraplas. Join the Enduraplas Community and connect with other Enduraplas fans, participate in giveaways, see videos of Enduraplas products in action, give us input on Enduraplas products, share your Enduraplas photos, and much more.



FIND US ON FACEBOOK  
[@enduraplas](#)



FIND US ON INSTAGRAM  
[@enduraplas](#)



FIND US ON TWITTER  
[@enduraplas](#)



WATCH US ON YOUTUBE  
[YouTube.com/enduraplas](#)



GET TIPS ON OUR BLOG  
[blog.enduraplas.com](#)

#EngineeredforEndurance



# COMPANY INFORMATION

## WARRANTY

You can depend on your Enduraplas® equipment to work as hard as you do, and for Enduraplas® to stand behind. We now offer an industry leading warranty because we can.

	Standard Warranty	Extended Warranty
Tanks	5 Years	*10 Years
Booms & Frames	1 Year	-
Parts & Accessories	**1 Year	-

\*Double your tank warranty by completing your warranty registration. Please contact your dealer for complete terms & conditions.

\*\*Unless expressly stated that they have an extended original manufacturer warranty.

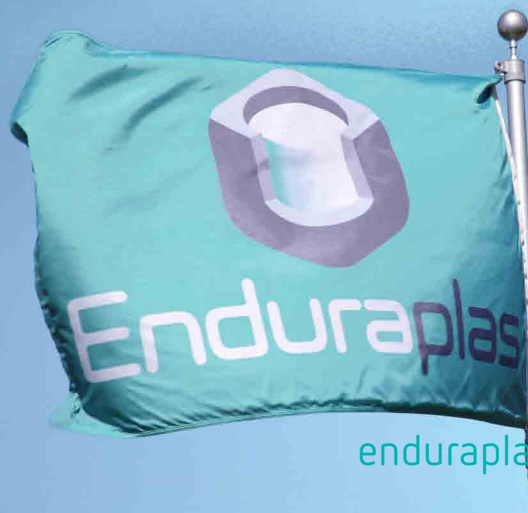
## THE BRAND

The name Enduraplas® originated in 2003. Since then, the brand has spread quickly throughout USA and Canada to a point where it is a common name heard in the agriculture industry. Products with the Enduraplas® brand are recognized as high quality and premium in the markets we serve.

The following are registered (®) or unregistered (™) trademarks of Enduraplas LLC:  
Enduraplas®, Field Boss™, Spray Marshal™, Marshal Plus™, Pro Master™, Tow Lynx™, Land Champ™, Fuel Boss™, Foam Ranger™, Fire Ranger™, Engineered For Endurance™.

## LEGAL NOTICE

Enduraplas reserves the right to change specifications, design and price of the products described in this literature without notice. Images used in this literature are pictured for display purposes only. Warranty of all products is only applicable when the product is used in accord with the operator's manual. Improper use of any equipment or accessory may cause serious or fatal injury. Read, understand and follow carefully the operator's manual before using these products.



# #EngineeredforEndurance

SHARE YOUR ENDURAPLAS SET-UP



## CONTACT YOUR DEALER

Dealer Details Here:

**Enduraplas®**

113 1st Street  
Neche, ND 58265  
USA

1 (877) 877-4370  
Info@enduraplas.com

To find a dealer: [enduraplasdealers.com](http://enduraplasdealers.com)  
For product information: [enduraplas.com](http://enduraplas.com)



\*All Enduraplas poly tanks are manufactured in the United States of America.

