



MARCH PUMPS

1819 PICKWICK AVE., GLENVIEW, IL 60026-1306, U.S.A
PHONE: (847) 729-5300 - FAX: (847) 729-7062
WWW.MARCHPUMP.COM

DESCRIPTION:

Series 2 are centrifugal magnetic drive pumps, eliminating the need for a shaft seal. Pumps can be serviced with a screwdriver. The "LC" model is hermetically encapsulated allowing the pump to run fully submerged or in open air for complete moisture protection. Model 2CP-MD must be run submerged only. See the parts list for a breakdown of parts. BC models have an encapsulated impeller magnet.

OPERATION:

Pumps are not self-priming, lack a suction lift, and thus require a **flooded suction**. Pumps **cannot be run dry** because the impeller requires the liquid being pumped for lubrication. For liquids with a specific gravity greater than water, have a higher viscosity, or for elevated temperatures, a trimmed impeller may be necessary. For application assistance, contact March Pump.

ELECTRICAL:

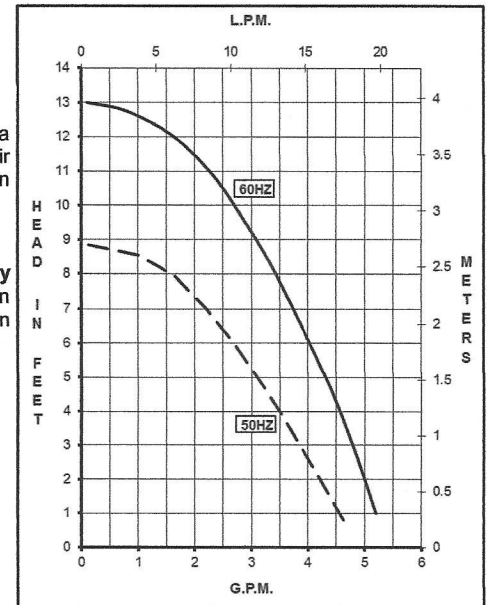
Pumps are U.L. Recognized under File No. E80954. U.L. Recognition On Pumps Is For Water Only.

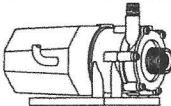
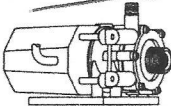
Model 2CP-MD 115 V has a 6 ft (1.8 m) cord with plug, 230 V has a 6 ft (1.8 m) cord.

Models LC-2CP-MD 115 V & 230 V have a 6 ft (1.8 m) cord.

Model Abbreviations: CP: Threaded Ports, LC: Liquid Cooled

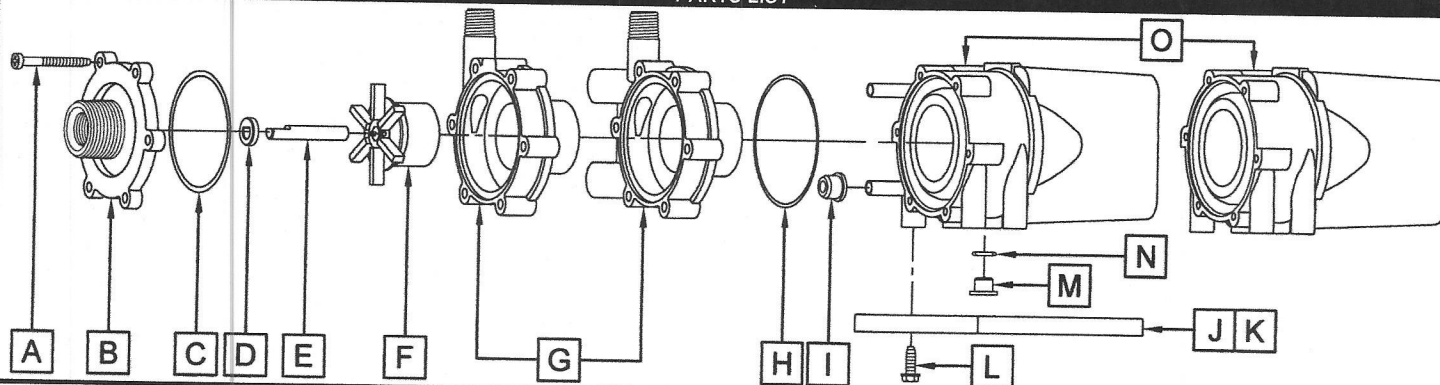
BC -2CP-MD, LC-2CP-MD



SPECIFICATIONS		2CP-MD														LC-2CP-MD																								
																																								
Product #		115 V		0125-0058-0100														0125-0057-0200																						
		230 V		0125-0058-0200														0125-0057-0300																						
Inlet - Outlet				3/8" FPT & 3/4" MPT - 1/4" MPT														3/8" FPT & 3/4" MPT - 1/4" MPT																						
Max Internal Pressure				50 psi (344 kPa)														25 psi (172 kPa)																						
Max Liquid Temperature				130 °F (54 °C)														130 °F (54 °C)																						
MODEL	60 Hz																50 Hz																Height		Width		Length		Packed Weight	
	Max Flow gpm / lpm		Max Head ft psi m				ELECTRICAL Ph V A Hp kW Rpm										Max Flow gpm / lpm		Max Head ft psi m				ELECTRICAL Ph V A Hp kW Rpm										inches cm	inches cm	inches cm	inches cm	lbs kg			
2CP-MD	5.0	18.9	13	5.7	4	1	115	0.92	1/50	0.015	3450	4.89	18.5	8.8	3.8	2.7	1	115	1.1	1/55	0.014	2850	4.13	10.4	4.87	12.3	6.11	15.5	5.05	2.29										
							230	0.53	1/40	0.019								230	0.72										230	0.72	5.05	2.29								
LC-2CP-MD	5.0	18.9	13	5.7	4	1	115	0.92	1/50	0.015	3450	4.89	18.5	8.8	3.8	2.7	1	115	1.1	1/55	0.014	2850	4.13	10.4	4.87	12.3	6.11	15.5	5.10	2.31										
							230	0.53	1/40	0.019								230	0.72										230	0.72	5.20	2.35								
All specifications & data are based on pumping water & are intended as a guideline only. Specifications may vary with different motors.																																								

All specifications & data are based on pumping water & are intended as a guideline only. Specifications may vary with different motors.

PARTS LIST



NOTE: When attaching the Drive Magnet to the motor shaft, position the face of the Drive Magnet 1/16 inch below the face of the Motor Bracket.

#	2CP-MD	LC-2CP-MD	MATERIAL	SIZE (Inches)	QTY.	2CP-MD	LC-2CP-MD
A	Self-Tapping Screw		Stainless	#7-19 x 1-7/16 Lg.	6	0115-0062-1000	
B	Cover		Polypropylene	3/8 FPT x 3/4 MPT	1	0125-0056-1000	
C	"O" Ring		Viton	3/32 CS x 2-3/16 OD	1	0125-0065-1000	
D	Thrust Washer		Ceramic		1	0130-0028-1000	
E	Shaft		Stainless		1	0125-0125-1000	
F	Impeller with Ceramic Magnet		Polypropylene		1	0125-0055-0100	
G	Rear Housing	Rear Housing & Plug	Polypropylene	1/4 MPT	1	0125-0058-1000	0125-0057-0100
H	Bracket "O" Ring		Viton	1/16 CS x 2-3/8 OD	1	0125-0121-1000	
I	Cooling Tube Seal		Buna N		2		0125-0007-1000
J	Mounting Base		Polypropylene		1	0125-0060-1000	
K	Marine Base (Not Shown) (Option)		Polypropylene & Grommets		1		0125-0113-0100
L	Base Screw		Stainless		4	0125-0130-1000	
M	Plug (Motor Bracket)				1	0125-0110-1000	
N	"O" Ring		Viton	1/16 CS x 7/16 OD	1	0210-0008-1000	
O	Epoxy Motor Assembly	L.C. Epoxy Motor Assembly			n/a	Not Available	
W	Wet End Kit (A, B, C, D, E, F, G, H, I)						0125-0115-0200

MATERIALS IN CONTACT WITH SOLUTION:

Polypropylene, Ceramic, Viton, Stainless Steel, Ceramic Magnet

When submerged also:

Epoxy, Buna N, cord.

LIMITED WARRANTY:

March pumps are guaranteed only against defects in workmanship or materials for a period of one year from date of manufacture pumping water. For the complete warranty and to register online go to www.marchpump.com/warranty-registration

NOTE: Contact Factory for other materials and/or parts not listed.

0125-0074-1000 R21