



## TOWN & COUNTRY PLASTICS

*Customized For Precision*

10B Timber Lane, Marlboro, NJ 07746 • (732) 780-5300 • FAX: (732) 294-0001 • [www.tandcplastics.com](http://www.tandcplastics.com)

### Floor Sinks – see submittal on following page

Item #	Size Outlet	Material
Model# R-8-8-8/HDPE AND #PVC-5809	10 1/2" x 10 1/2" x 8 1/2" (I.D.)	HDPE/WHITE
#PVC-5812	12" x 12" x 6" (I.D.)	PVC/WHITE

### Floor Sink Grates

Item #	Grate Style	Size Outlet	Material
PVC-4709A	Full Grate "A"	10 1/2" x 10 1/2"	PP/WHITE
PVC-4712A	Full Grate "A"	12" x 12"	PVC/WHITE
PVC-4709B	Three-Quarter Grate "B"	10 1/2" x 10 1/2"	PP/WHITE
PVC-4712B	Three-Quarter Grate "B"	12" x 12"	PVC/WHITE
PVC-4709C	Half-Grate "C"	10 1/2" x 10 1/2"	PP/WHITE
PVC-4712C	Half-Grate "C"	12" x 12"	PVC/WHITE

### Floor Drain (Complete Assembly) – see submittal on following pages

Item #	Size Outlet	Material
PVC-4750	3"	PVC-GRAY/WHITE
PVC-4751	4"	PVC-GRAY/WHITE
PVC-4752	6"	PVC-GRAY/WHITE
PP-7749 P or MT	2"	PP/BLACK-BLUIISH
PP-7750 P or MT	3"	PP/BLACK-BLUIISH
PP-7751 P or MT	4"	PP/BLACK-BLUIISH
PP-7752P	6"	PP/BLACK-BLUIISH
"F" optional funnel (3"x6") oval	N/A	PP/WHITE OR BLACK
"TP" optional 1/2" trap primer connection (welded on body)	N/A	N/A

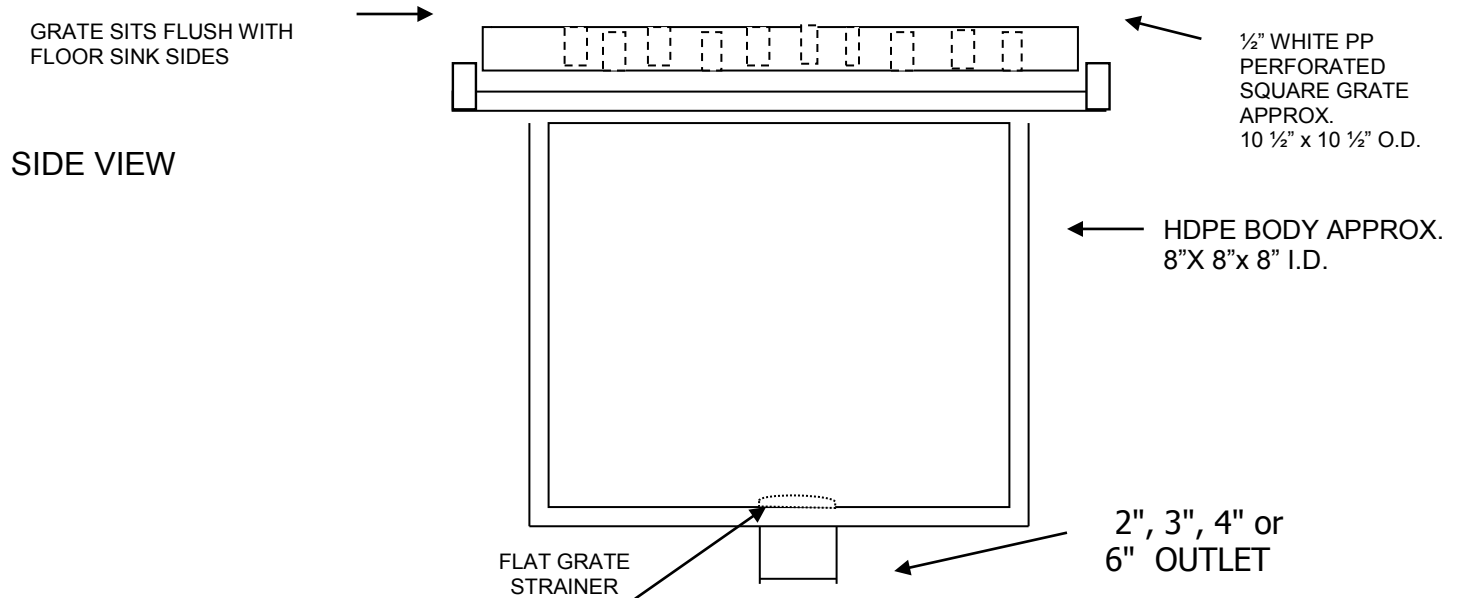


**TOWN & COUNTRY PLASTICS**

*Customized For Precision*

10-B Timber Lane, Marlboro, NJ 07746 • (732) 780-5300 • FAX: (732) 294-0001 • [www.tandcplastics.com](http://www.tandcplastics.com)

## HDPE FLOOR SINK WITH FULL GRATE MODEL #R-8-8-8 / HDPE AND #PVC-5809



NOTE: ALL COMPONENTS ARE MADE OF ACID RESISTANT HDPE AND / OR PP MATERIALS.

### WHEN ORDERING, PLEASE SPECIFY OPTIONS:

- 1). CHOOSE OUTLET SIZE AND TYPE PLAIN-END PIPE OR MALE THREADS.
- 2). INSIDE GRATE STRAINER AVAILABLE IN DOMED OR FLAT STYLE.
- 3). OTHER TYPE OF OUTLET CONNECTIONS AVAILABLE AT EXTRA COST.
- 4). FULL, 3/4 OR HALF GRATE TOP AVAILABLE AT SAME COST.
- 5). ANCHORING AND FLASHING FLANGES AVAILABLE, AT EXTRA COST.
- 6). ANCHORING NUTS AND RECESSED BOLT HOLES IN GRATE AVAILABLE, AT EXTRA COST.

NOTE: PLAIN-END PIPE IS FOR MECHANICAL JOINT CONNECTION (SUCH AS FERNCO ADAPTERS).  
THEY CANNOT BE CEMENTED TO PVC OR ABS FITTINGS.

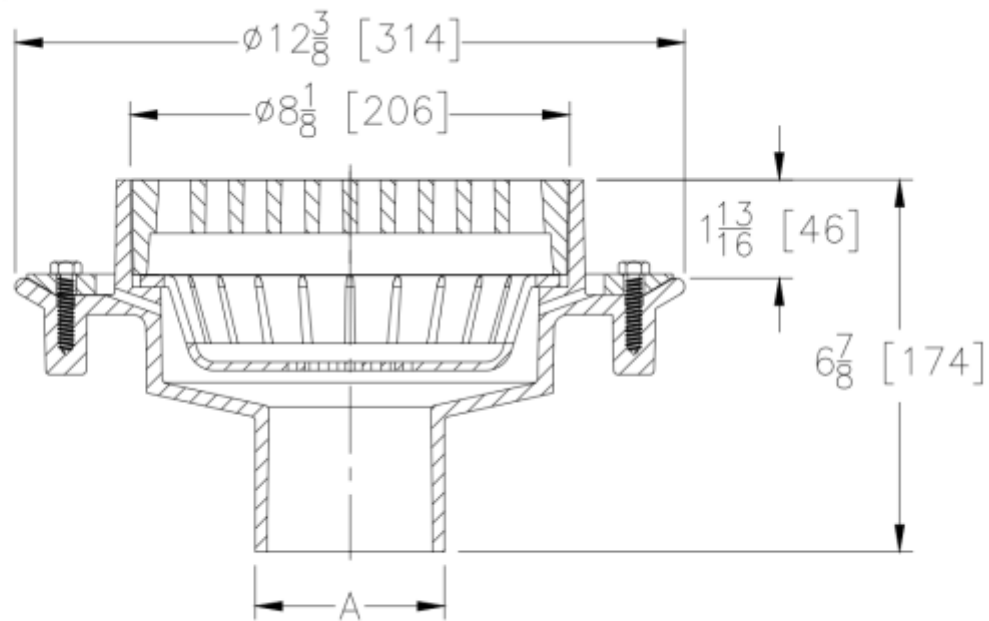


**TOWN & COUNTRY PLASTICS**

*Customized For Precision*

10B Timber Lane, Marlboro, NJ 07746 • (732) 780-5300 • FAX: (732) 294-0001 • [www.tandcplastics.com](http://www.tandcplastics.com)

## Acid Resistant PP Floor Drains



PP-7749 P or MT	2"	PP/BLACK-BLUIISH
PP-7750 P or MT	3"	PP/BLACK-BLUIISH
PP-7751 P or MT	4"	PP/BLACK-BLUIISH
PP-7752P	6"	PP/BLACK-BLUIISH
"F" optional funnel (3"x6") oval	N/A	PP/WHITE OR BLACK
"TP" optional 1/2" trap primer connection (welded on body)	N/A	N/A



**TOWN & COUNTRY PLASTICS**

*Customized For Precision*

10-B Timber Lane, Marlboro, NJ 07746 • (732) 780-5300 • FAX: (732) 294-0001 • [www.tandcplastics.com](http://www.tandcplastics.com)

## **T&C CUSTOM TRENCH DRAINS AND GRATES**

**Made of:**

**PP (Polypropylene) or HDPE (High Density Polyethylene)**



**SEE MODELS AND OPTIONS AVAILABLE IN THIS CATALOGUE.**



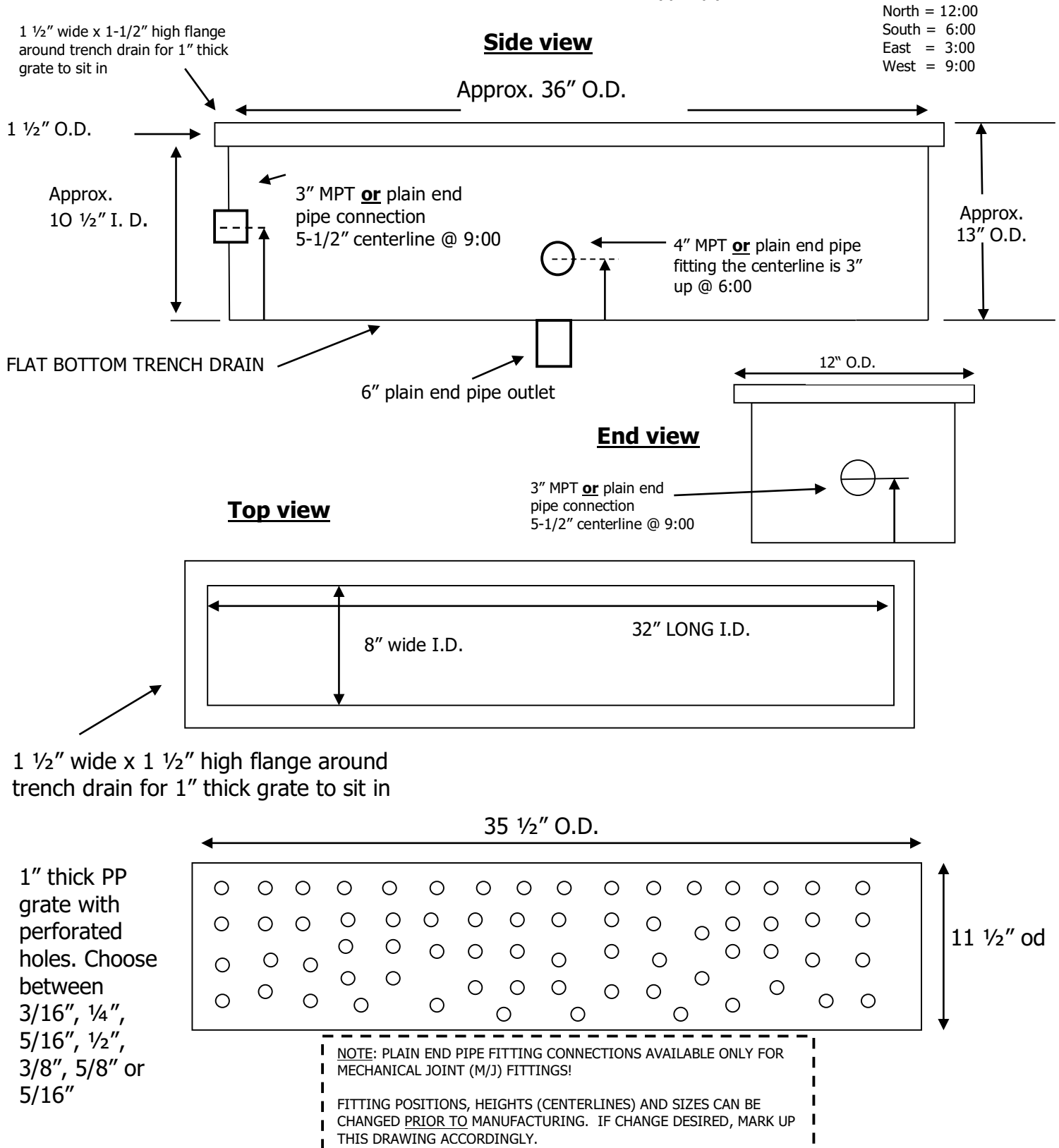
**TOWN & COUNTRY PLASTICS**

*Customized For Precision*

10-B Timber Lane, Marlboro, NJ 07746 • (732) 780-5300 • FAX: (732) 294-0001 • [www.tandoplastics.com](http://www.tandoplastics.com)

**Polypropylene flat bottom trench drain with bottom outlet**

Fabricated from 1/2" thick white Polypropylene





**TOWN & COUNTRY PLASTICS**

*Customized For Precision*

10-B Timber Lane, Marlboro, NJ 07746 • (732) 780-5300 • FAX: (732) 294-0001 • [www.tandcplastics.com](http://www.tandcplastics.com)

**Polypropylene sloped trench drain with bottom outlet**

Fabricated from 1/2" thick white Polypropylene

**Side view**

1 1/2" wide x 1" high flange  
around trench drain for 1"  
thick grate to sit in

Approx.  
I.D. OR O.D.

Approx. 96" O.D.

Approx. 6"  
I.D. OR O.D.

Sloped to outlet

welded

4" Plain End Pipe  
Bottom Outlet

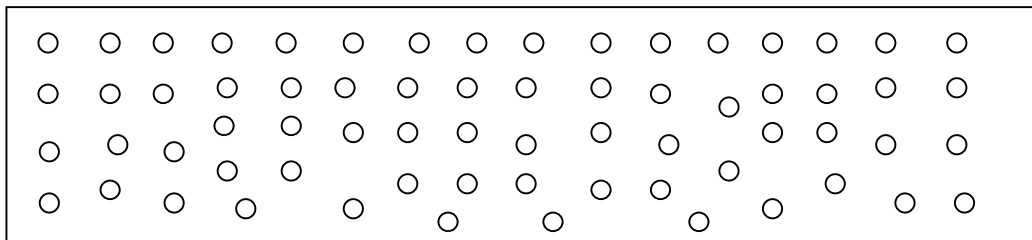
1 1/2" wide x 1/2" high flange around  
trench drain for 1/2" thick grate to sit in

**Top view**

6" wide I.D. OR O.D.

1/2" thick PP  
grate with  
perforated  
holes.

Choose  
between  
3/16", 1/4",  
5/16", 1/2",  
3/8", 5/8" or  
5/16"





**TOWN & COUNTRY PLASTICS**

*Customized For Precision*

10-B Timber Lane, Marlboro, NJ 07746 • (732) 780-5300 • FAX: (732) 294-0001 • [www.tandcplastics.com](http://www.tandcplastics.com)

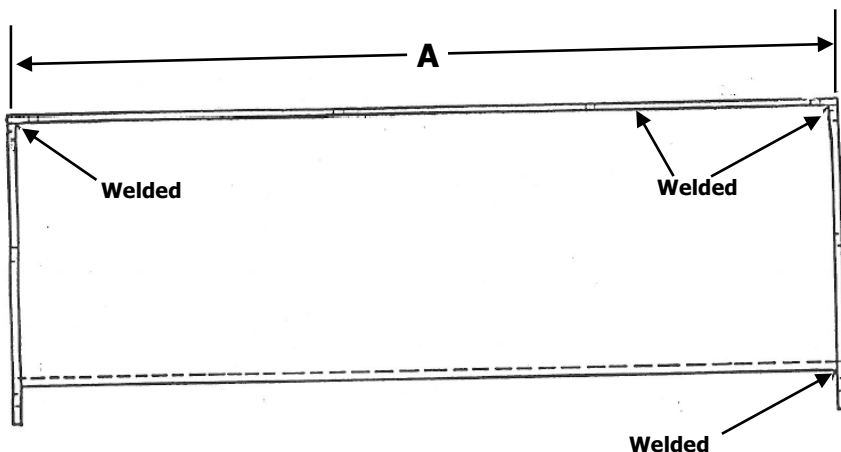
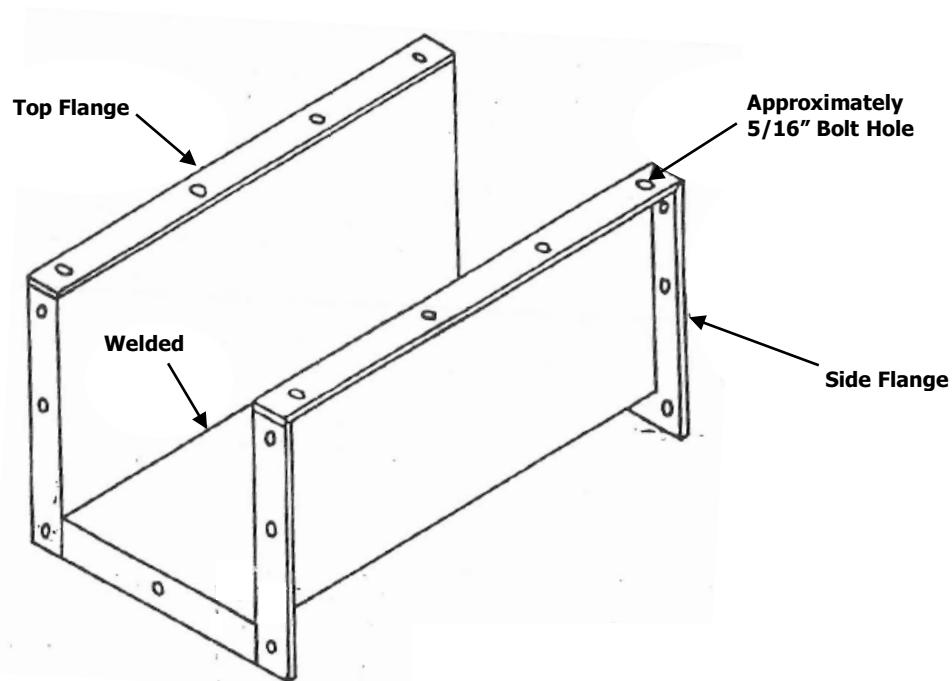
## **RUNNING (IN-LINE) TROUGH**

**Model #PPT-200**

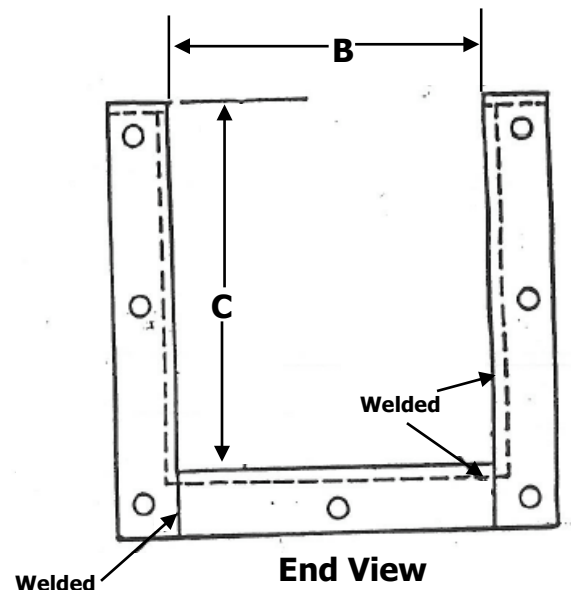
**Color: White Polypropylene**

**Wall Thickness: 1/4" throughout (including flanges)**

**Flange Width: 1 1/4" throughout (includes 1/4" wall thickness)**



**Side View**



**End View**





**TOWN & COUNTRY PLASTICS**

*Customized For Precision*

10-B Timber Lane, Marlboro, NJ 07746 • (732) 780-5300 • FAX: (732) 294-0001 • [www.tandcplastics.com](http://www.tandcplastics.com)

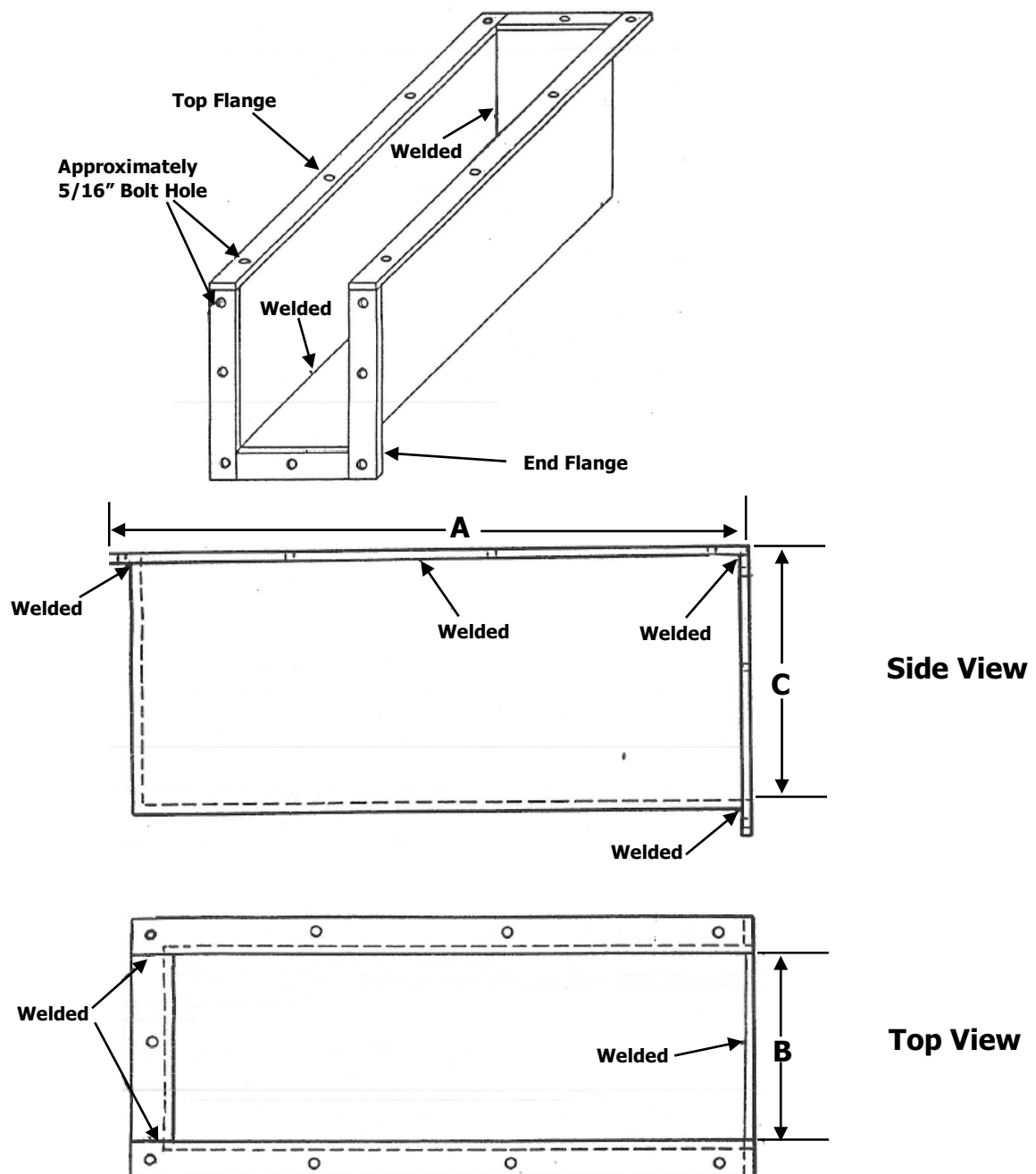
## END TROUGH

### Model #PPT-100

**Color:** White Polypropylene

**Wall Thickness:** 1/4" throughout (including flanges)

**Flange Width:** 1 1/4" throughout (includes 1/4" wall thickness)







**TOWN & COUNTRY PLASTICS**

*Customized For Precision*

10-B Timber Lane, Marlboro, NJ 07746 • (732) 780-5300 • FAX: (732) 294-0001 • [www.tandcplastics.com](http://www.tandcplastics.com)

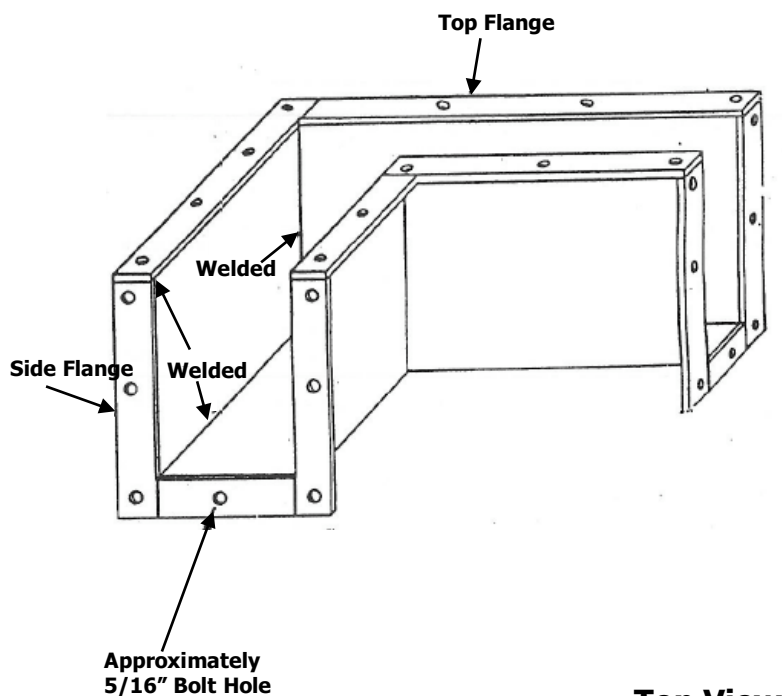
## **CORNER TROUGH**

**Model #PPT-300**

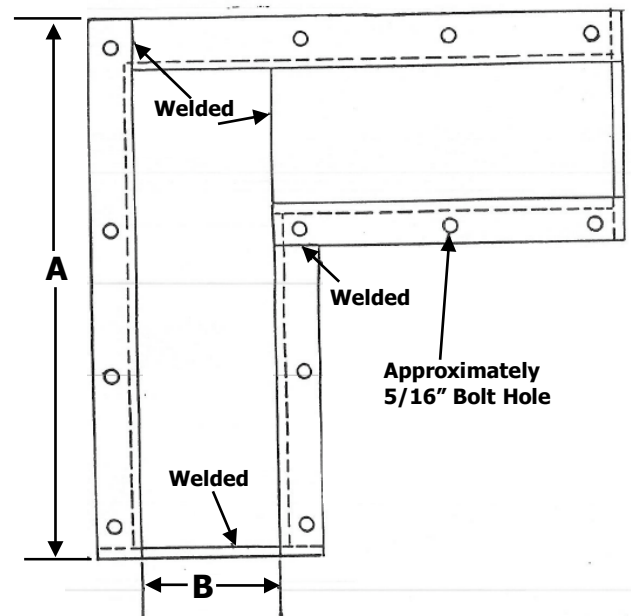
**Color: White Polypropylene**

**Wall Thickness:  $\frac{1}{4}$ " throughout (including flanges)**

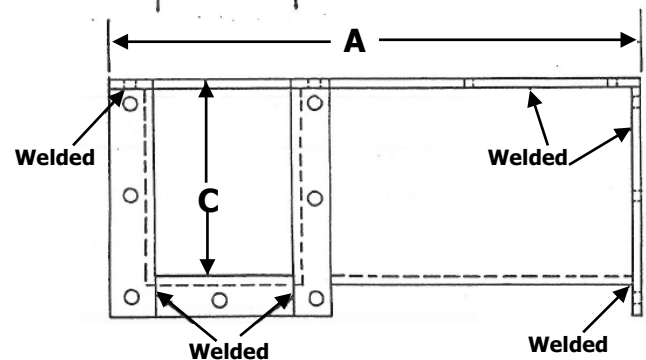
**Flange Width:  $1 \frac{1}{4}$ " throughout (includes  $\frac{1}{4}$ " wall thickness)**



**Top View**



**Side View**





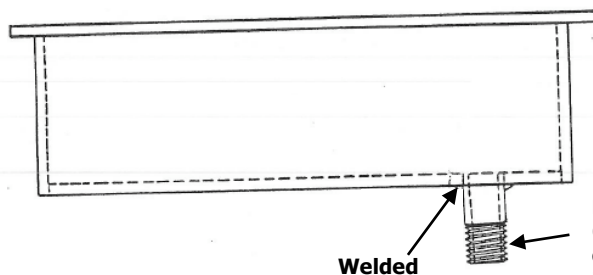
**TOWN & COUNTRY PLASTICS**

*Customized For Precision*

10-B Timber Lane, Marlboro, NJ 07746 • (732) 780-5300 • FAX: (732) 294-0001 • [www.tandcplastics.com](http://www.tandcplastics.com)

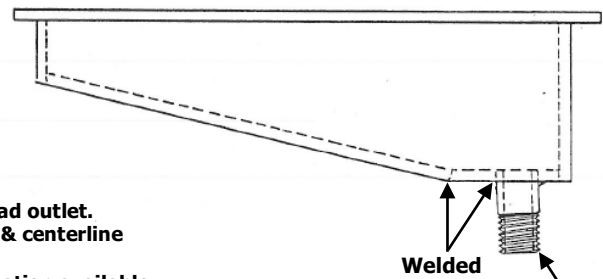
## OPTIONAL TROUGH OUTLETS (Side Views)

**Bottom Outlets  
Any Flat Bottom Troughs**



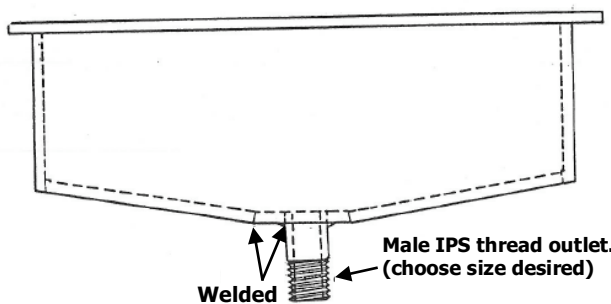
Male IPS thread outlet.  
(choose sizes & centerline  
desired)  
NOTE: Any location available.

**End Outlets  
Sloped Bottom Troughs**



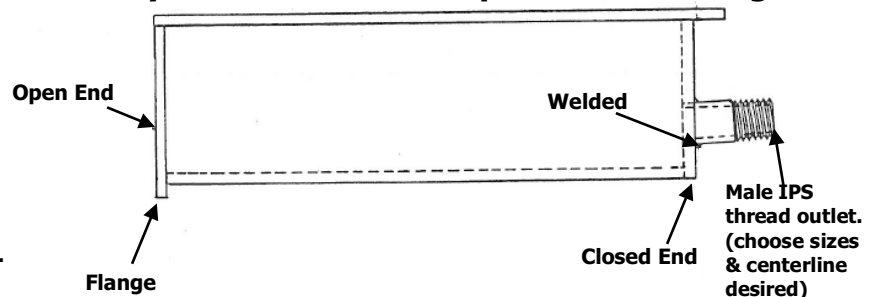
Male IPS  
thread outlet.  
(choose sizes  
& centerline  
desired)

**Center Outlets  
Sloped Bottom Troughs**



Male IPS thread outlet.  
(choose size desired)

**End Wall Outlets  
Any Flat Bottom OR Sloped Bottom Troughs**



Male IPS  
thread outlet.  
(choose sizes  
& centerline  
desired)

NOTE: Standard outlet connections are male IPS threads. However, other connections and adaptors available, at extra cost & possibly delivery times. Check with T&C for details.



**TOWN & COUNTRY PLASTICS**

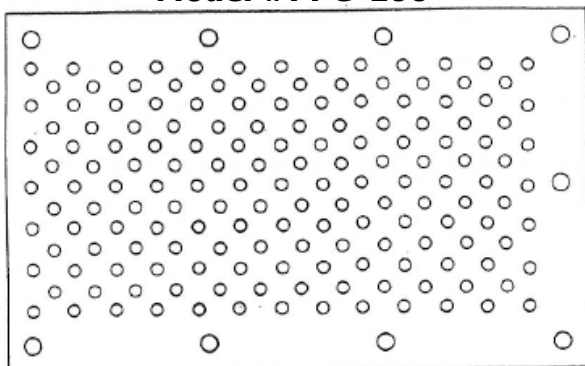
*Customized For Precision*

10-B Timber Lane, Marlboro, NJ 07746 • (732) 780-5300 • FAX: (732) 294-0001 • [www.tandoplastics.com](http://www.tandoplastics.com)

## CUSTOM MADE (Top Views)

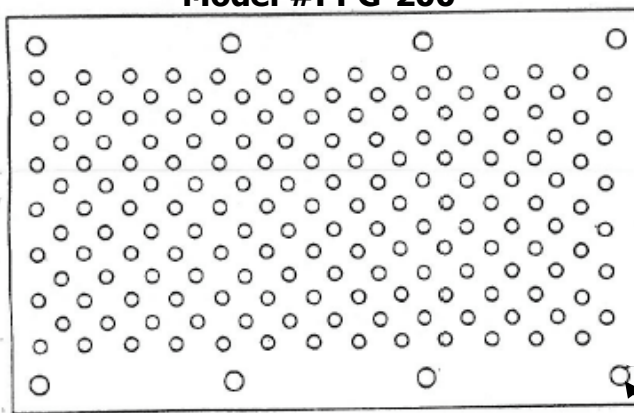
**Grate for End Troughs**

**Model #PPG-100**



**Grate for Running (in-line) Troughs**

**Model #PPG-200**



Approximately  
5/16" recessed  
or regular bolt  
holes (choose).

**Choose between the following hole sizes:**

- ☐ 3/16"
- ☐ 5/16"
- ☐ 1/2"
- ☐ 3/4"
- ☐ 1/4"
- ☐ 3/8"
- ☐ 5/8"
- ☐ Other size (specify) \_\_\_\_\_

**BOLT HOLES:**

- ☐ Recessed
- ☐ Regular

**GRATE THICKNESS: 1" or 1/2"**  
(other thicknesses available)

**COLOR:** White polypropylene for 1/2" thickness.  
Natural (translucent) polypropylene for 1"  
thickness.

Other colors available, upon request.

**NOTE:** Hole spacing, quantities and sizes may  
vary somewhat on actual finished grates.

**Grate for Corner Troughs**

**Model #PPG-300**

